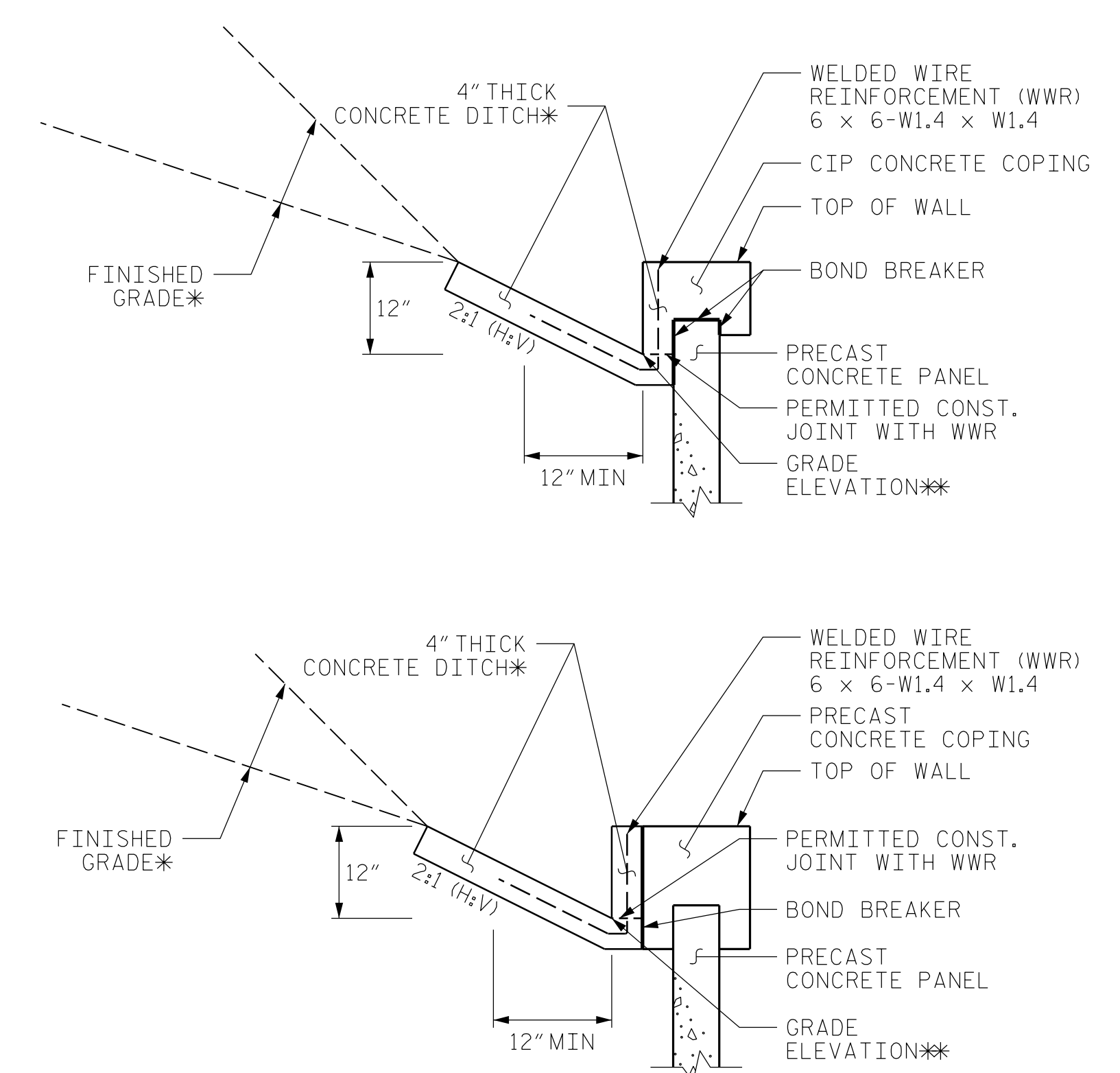
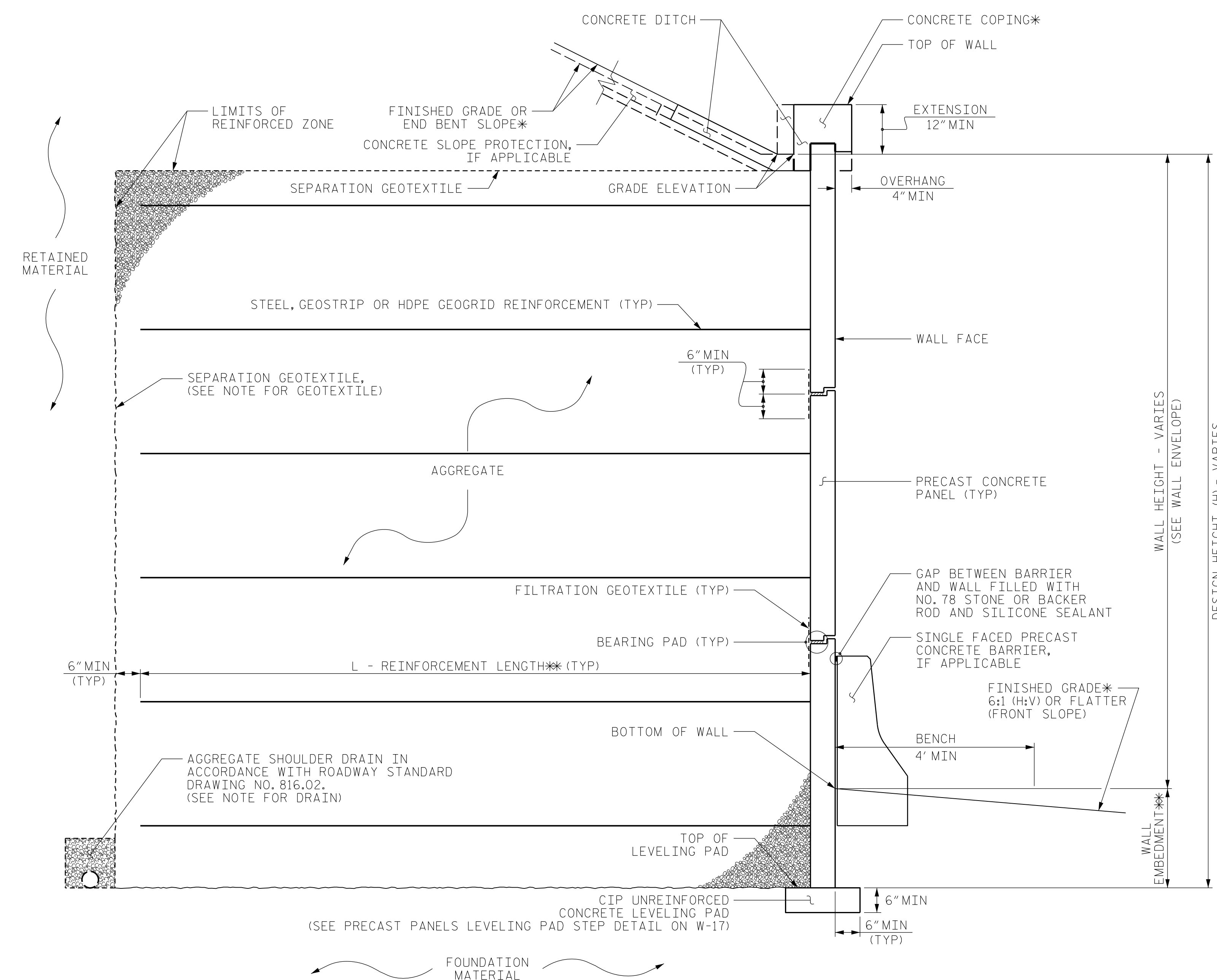


GEOTECHNICAL ENGINEER  
 ENGINEER  
 NORTH CAROLINA PROFESSIONAL SEAL 048207  
 ENGINEER STEPHEN C. CROCKETT  
 DocuSigned by: Stephen C. Crockett 04/12/2022  
 DOCUMENT NOT CONSIDERED FINAL UNLESS ALL SIGNATURES COMPLETED

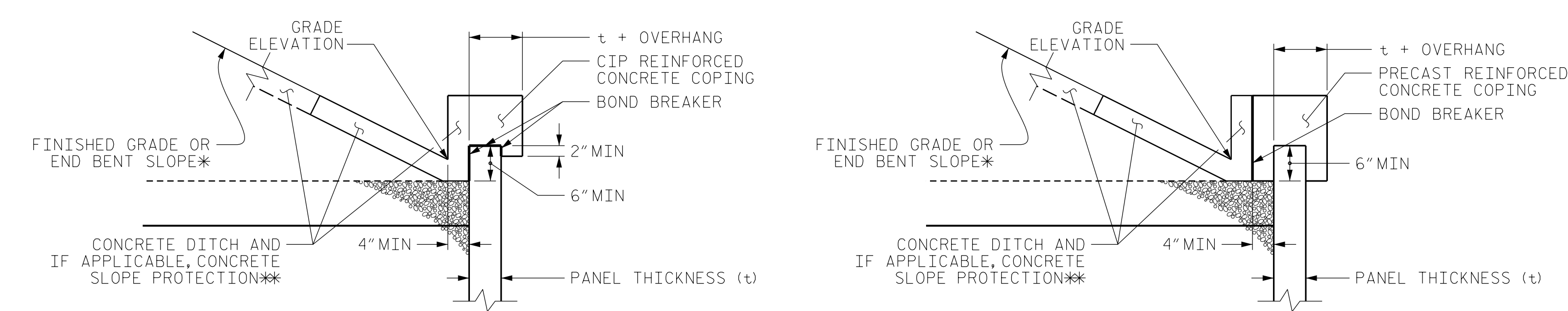


CONCRETE DITCH BEHIND WALL WITH CONCRETE COPING

\*SEE ROADWAY PLANS FOR CONCRETE DITCH AND FINISHED GRADE DETAILS.  
 \*\*SEE WALL ENVELOPE FOR GRADE ELEVATIONS.

MSE WALL WITH PRECAST PANELS - TYPICAL SECTION

\*SEE COPING DETAILS AND PLANS FOR FINISHED GRADE OR END BENT SLOPE DETAILS.  
 \*\*SEE MSE RETAINING WALLS PROVISION AND IF APPLICABLE, MSE WALL NOTES FOR WALL EMBEDMENT AND REINFORCEMENT LENGTH REQUIREMENTS.



COPING DETAILS

\*SEE PLANS FOR FINISHED GRADE OR END BENT SLOPE DETAILS.  
 \*\*SEE CONCRETE DITCH BEHIND WALL DETAILS.

PROJECT NO.: I-5987B  
 ROBESON COUNTY  
 STATION: VARIES  
 SHEET 14 OF 19

PREPARED BY: S. CROCKETT DATE: 3/29/22  
 REVIEWED BY: J. HAMM DATE: 3/29/22

FALCON ENGINEERING, INC.  
 1210 TRINITY ROAD, SUITE 110  
 CARY, NC 27513  
 PHONE: 919.871.0800  
 www.falconengineers.com

NORTH CAROLINA  
 DEPARTMENT OF TRANSPORTATION  
 DIVISION OF HIGHWAYS  
 GEOTECHNICAL  
 ENGINEERING UNIT

MSE WALL WITH PANELS AND BACKSLOPE TYPICAL, COPING DETAILS, AND CONCRETE DITCH BEHIND WALL DETAILS FOR RETAINING WALLS NO. W4A, W4B, W6A, W6B, WY7A, W7B, W8A, AND W8B

REVISIONS					
NO.	BY	DATE	NO.	BY	DATE
1			3		
2			4		

SHEET NO. W-14