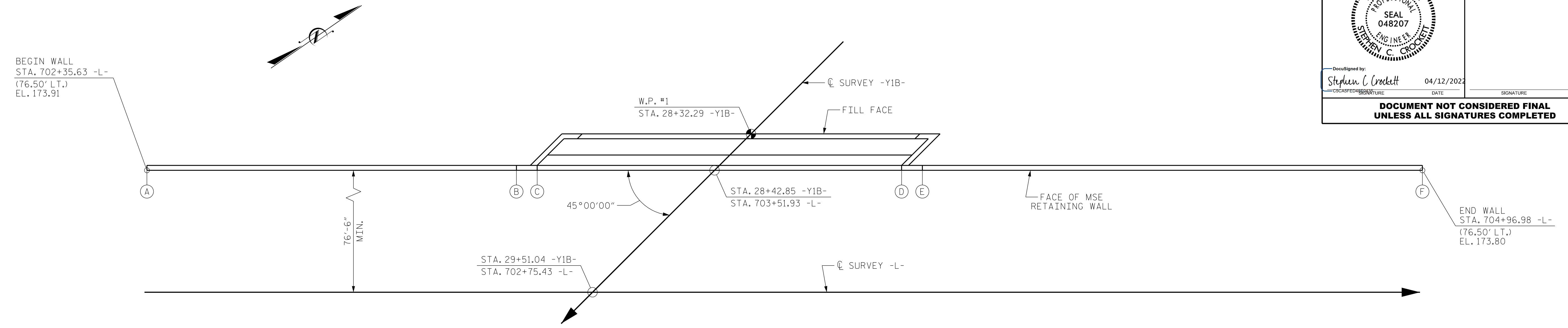
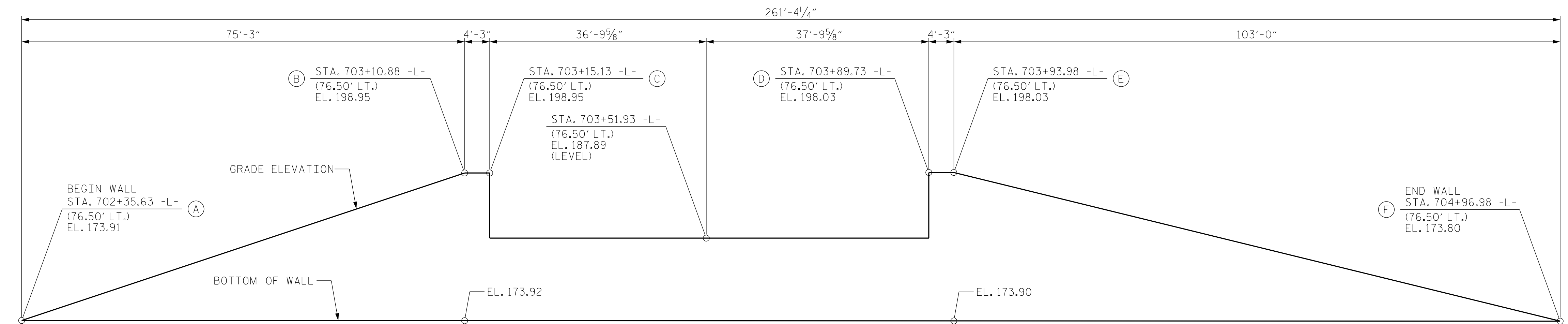


GEOTECHNICAL ENGINEER
 ENGINEER
 NORTH CAROLINA PROFESSIONAL SEAL 048207
 ENGINEER
 STEPHEN C. CROCKETT
 Documented by: Stephen C. Crockett 04/12/2022
 DATE
 SIGNATURE DATE
DOCUMENT NOT CONSIDERED FINAL UNLESS ALL SIGNATURES COMPLETED



ESTIMATED MSE WALL QUANTITIES (SQUARE FEET)	
MSE RETAINING WALL NO. W6A	4,025 SF

RETAINING WALL NO. W6A PLAN - END BENT 1 MSE WALL



RETAINING WALL NO. W6A ENVELOPE - END BENT 1 MSE WALL

DIMENSIONS OF WALL TAKEN ALONG FRONT FACE OF MSE WALL FACING DOWNSTATION ON -Y1B-

PROJECT NO.: I-5987B
 ROBESON COUNTY
 STATION: 29+51.04 -Y1B-
 SHEET 5 OF 19 WALL ID W6A

PREPARED BY: S. CROCKETT DATE: 3/29/22
 REVIEWED BY: J. HAMM DATE: 3/29/22

FALCON ENGINEERING, INC.
 1210 TRINITY ROAD, SUITE 110
 CARY, NC 27513
 PHONE: 919.871.0800
 www.falconengineers.com

NORTH CAROLINA
 DEPARTMENT OF TRANSPORTATION
 DIVISION OF HIGHWAYS
GEOTECHNICAL ENGINEERING UNIT

REVISIONS						SHEET NO. W-5
NO.	BY	DATE	NO.	BY	DATE	
1			3			
2			4			