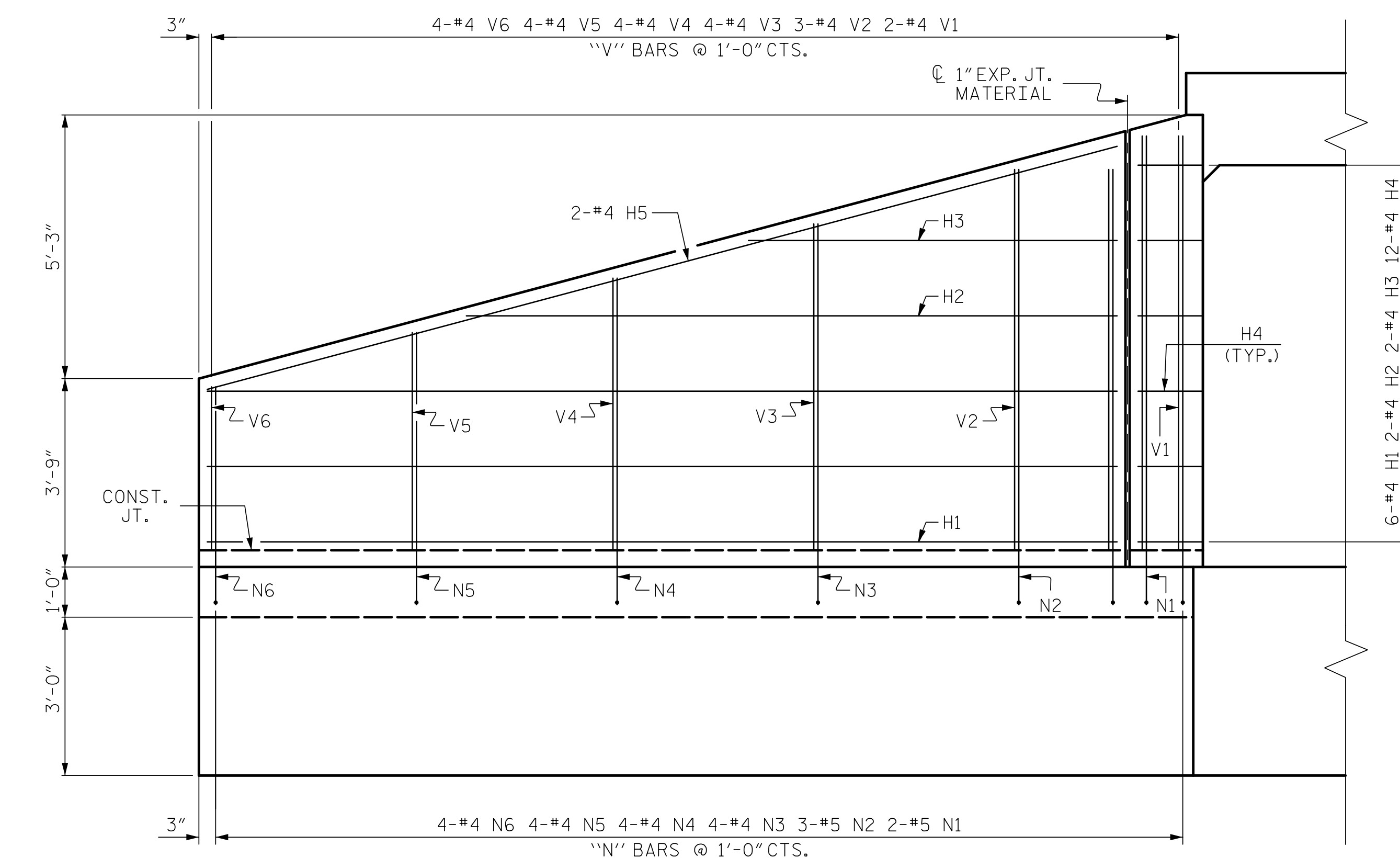
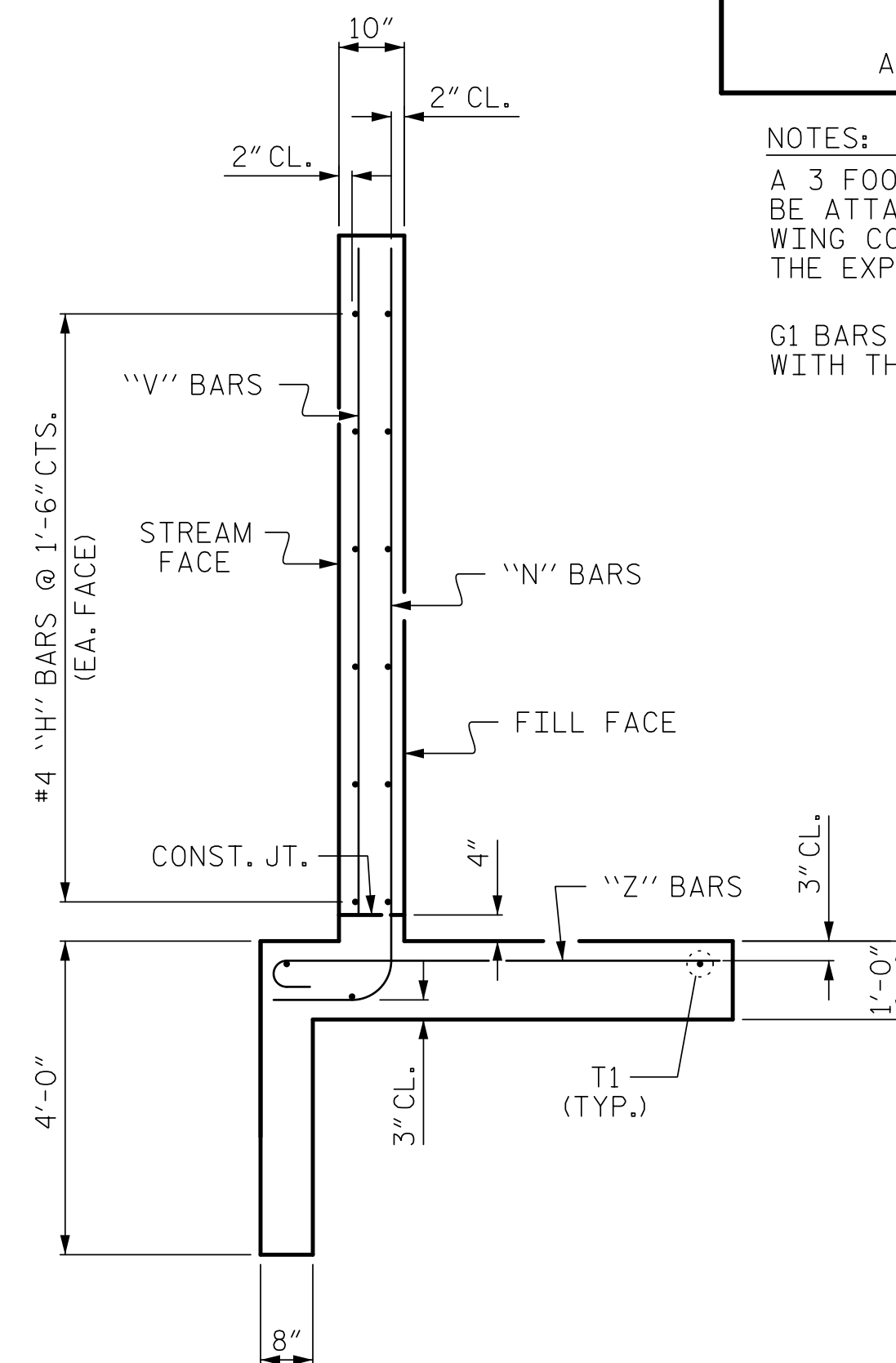


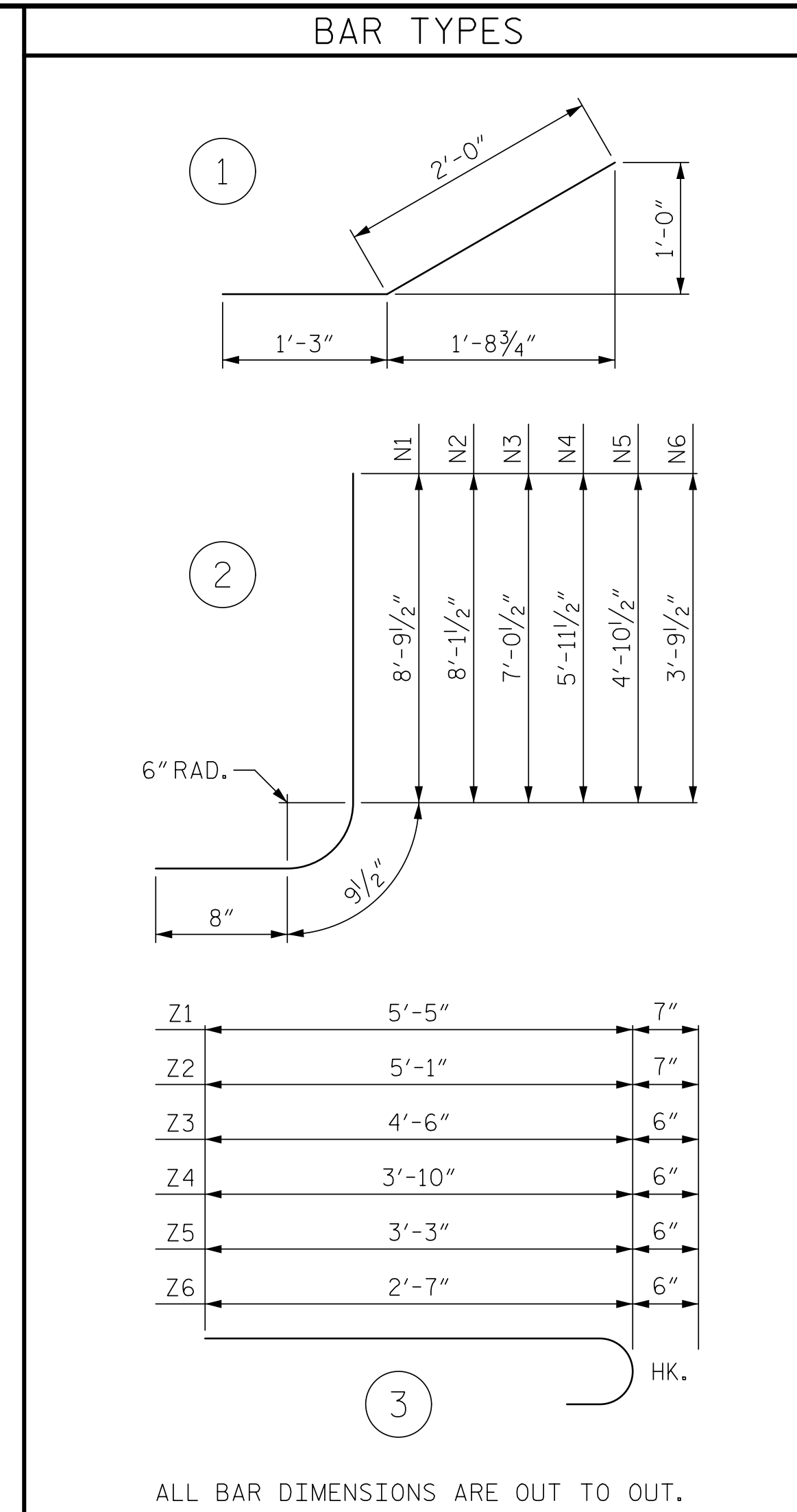
PLAN



ELEVATION



TYPICAL WING SECTION



NOTES:  
 A 3 FOOT STRIP OF FILTER FABRIC SHALL BE ATTACHED TO THE FILL FACE OF THE WING COVERING THE ENTIRE LENGTH OF THE EXPANSION JOINT.  
 G1 BARS IN HEADWALL ARE INCLUDED WITH THE BARREL REINFORCING STEEL.

PROJECT NO. I-5987B  
 ROBESON COUNTY  
 STATION: 902+33.00 -L-  
 SHEET 9 OF 9

STATE OF NORTH CAROLINA  
 DEPARTMENT OF TRANSPORTATION  
 RALEIGH

WINGS FOR CONCRETE BOX CULVERT  
 H = 8'-0" SLOPE = 3:1  
 90° SKEW

4/12/2022 | 10:50 AM EDT

DOCUMENT NOT CONSIDERED FINAL UNLESS ALL SIGNATURES COMPLETED

TGS ENGINEERS  
 706 HILLSBOROUGH STREET  
 SUITE 200  
 RALEIGH, NC 27603  
 PH (919) 773-8887  
 CORP. LICENSE NO.: C-0275

ASSEMBLED BY : STM DATE : 5/21  
 CHECKED BY : ZCS DATE : 10/21  
 DRAWN BY : CCJ 10/99 REV. 6/19 MAA/THC  
 CHECKED BY : RWW 03/00

REVISIONS						SHEET NO.	
NO.	BY:	DATE:	NO.	BY:	DATE:	C18-9	
1			3			TOTAL SHEETS	
2			4			9	