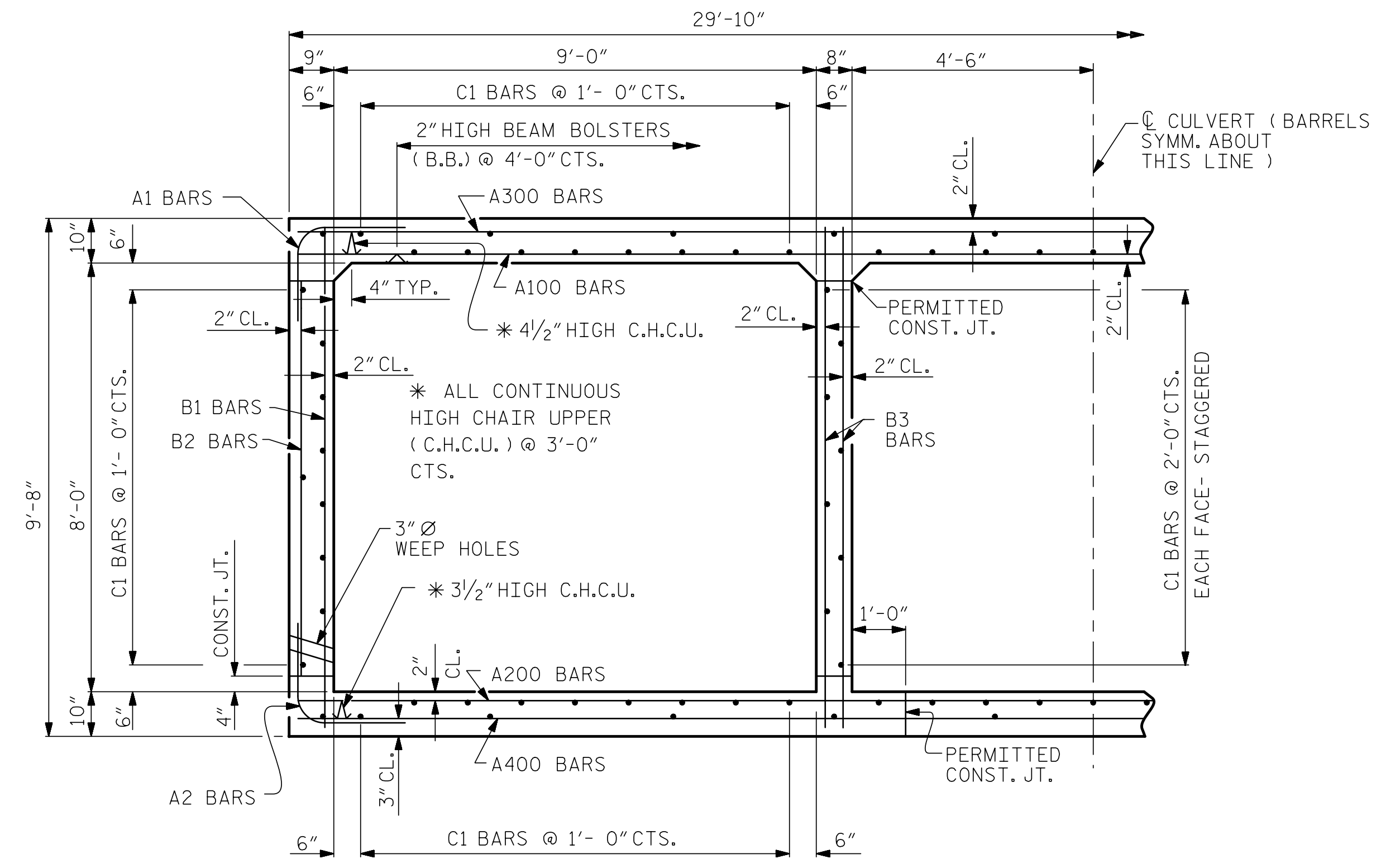
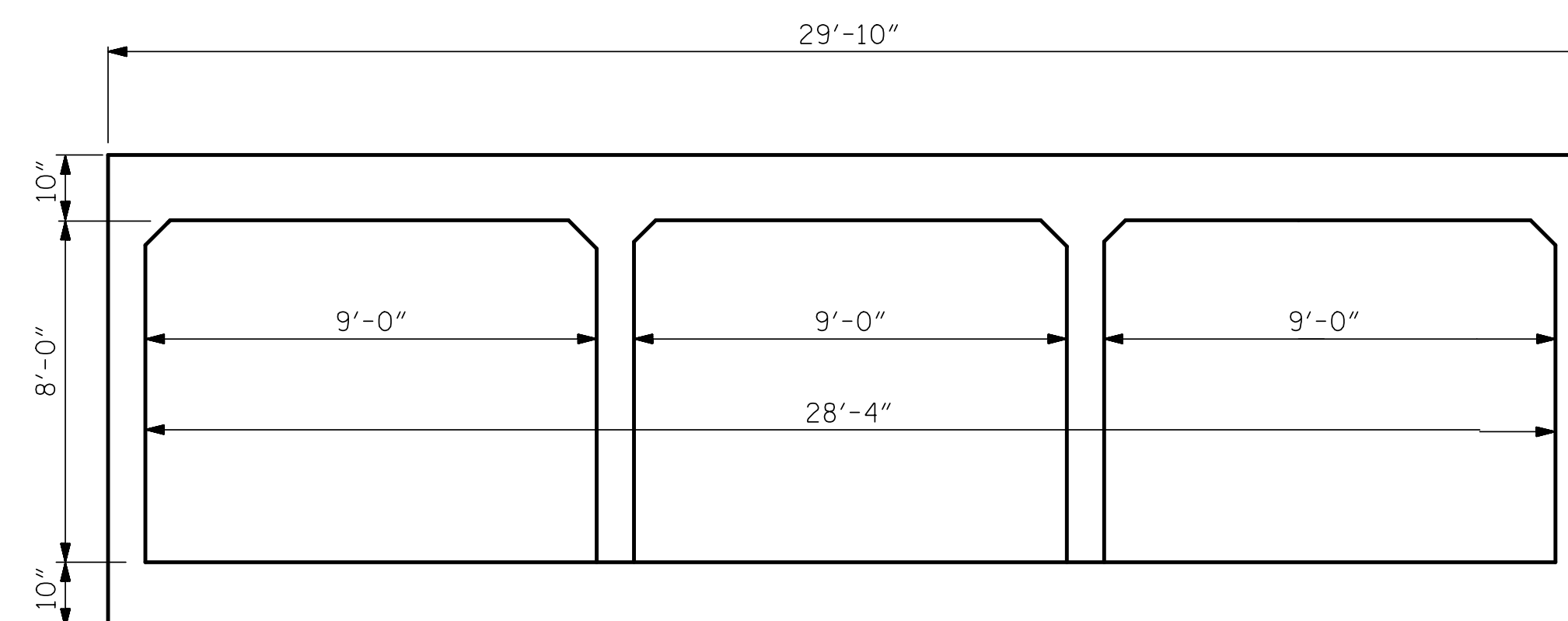


EXTERIOR WALL **INTERIOR WALL**
CULVERT SECTION NORMAL TO ROADWAY



RIGHT ANGLE SECTION OF BARREL

THERE ARE 108 "C" BARS IN SECTION OF BARREL.



END ELEVATION

STAGE II QUANTITIES		
CLASS A CONCRETE		
BARREL @	2.693 CY/FT	110.4 C.Y.
TOTAL		110.4 C.Y.
REINFORCING STEEL		
BARREL		13,286 LBS.
TOTAL		13,286 LBS.
CULVERT EXCAVATION LUMP SUM		
FOUNDATION COND. MAT'L. 98 TONS		
FOUNDATION COND. GEOTEXTILE 335 SQ. YDS.		

PROJECT NO. I-5987B
ROBESON COUNTY
 STATION: 902+33.00 -L-

SHEET 5 OF 9

ASSEMBLED BY :	ZCS	DATE :	9/21
CHECKED BY :	MGC	DATE :	10/21
DRAWN BY :	JEM 8/89	REV. 6/19	MAA/THC
CHECKED BY :	ARB 8/89		

4/12/2022 | 10:50 AM EDT
 DOCUMENT NOT CONSIDERED FINAL UNLESS ALL SIGNATURES COMPLETED
TGS ENGINEERS
 706 HILLSBOROUGH STREET
 SUITE 200
 RALEIGH, NC 27603
 PH (919) 773-8887
 CORP. LICENSE NO.: C-0275

STATE OF NORTH CAROLINA
 DEPARTMENT OF TRANSPORTATION
 RALEIGH
**TRIPLE 9 FT. X 8 FT.
 CONCRETE BOX CULVERT
 90°-00'-00" SKEW
 STAGE II**

REVISIONS						SHEET NO.
NO.	BY:	DATE:	NO.	BY:	DATE:	C18-5
1			3			TOTAL SHEETS
2			4			9