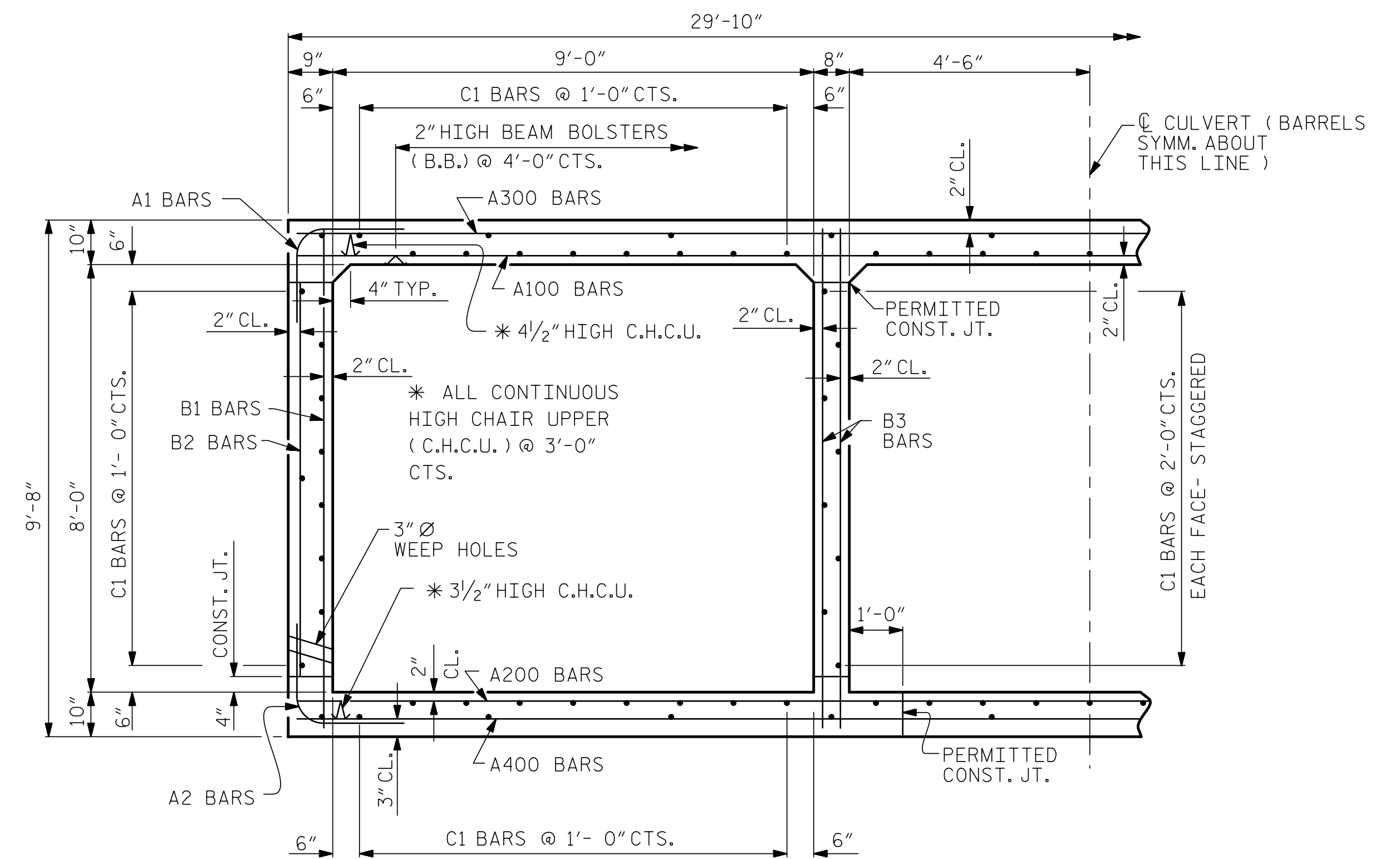
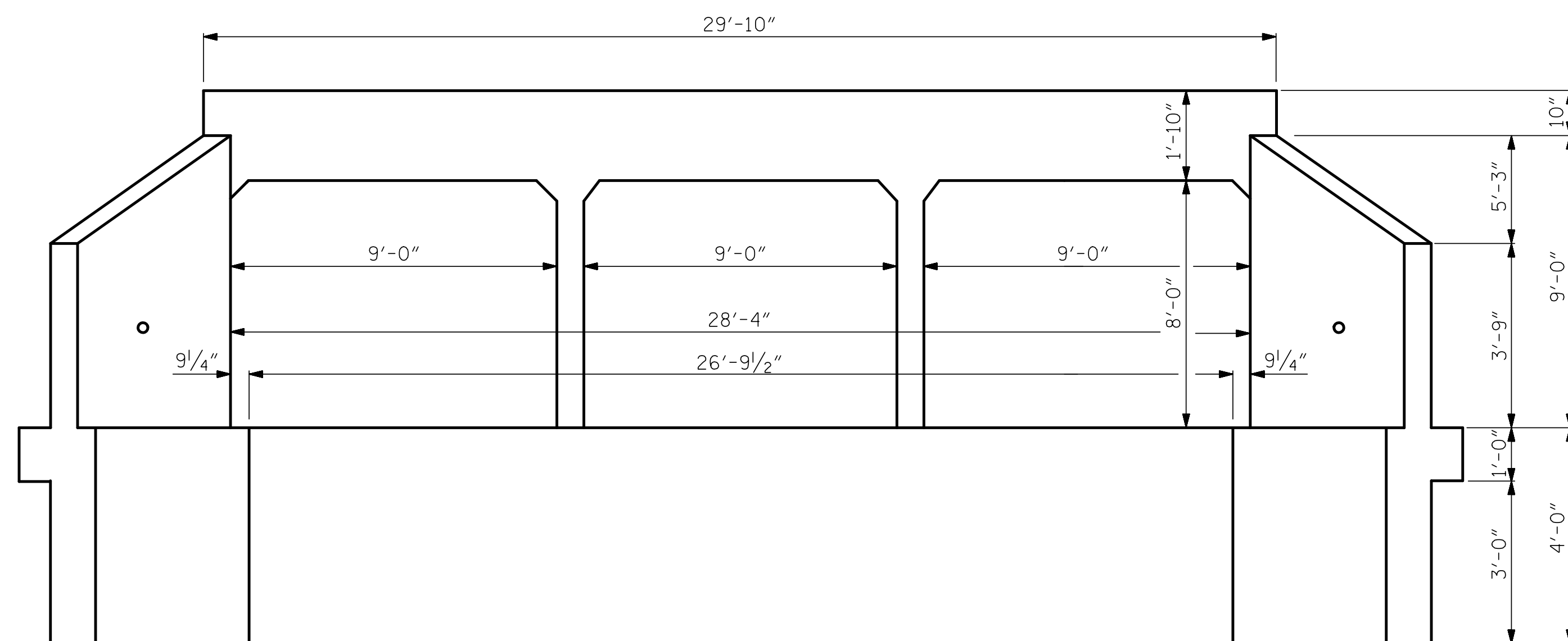


INTERIOR WALL **EXTERIOR WALL**
CULVERT SECTION NORMAL TO ROADWAY



RIGHT ANGLE SECTION OF BARREL

THERE ARE 108 "C" BARS IN SECTION OF BARREL.

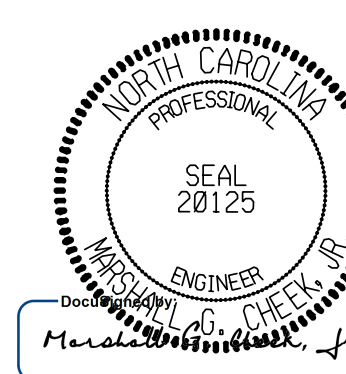


END ELEVATION

STAGE I QUANTITIES		
CLASS A CONCRETE		
BARREL @	2.693 CY/FT	153.5 C.Y.
WINGS, ETC.		22.0 C.Y.
TOTAL		175.5 C.Y.
REINFORCING STEEL		
BARREL		18,312 LBS.
WINGS, ETC.		1,028 LBS.
TOTAL		19,340 LBS.
CULVERT EXCAVATION		LUMP SUM
FOUNDATION COND. MAT'L.		136 TONS
FOUNDATION COND. GEOTEXTILE		440 SQ. YDS.

PROJECT NO. I-5987B
ROBESON COUNTY
STATION: 902+33.00 -L-

SHEET 3 OF 9



4/12/2022 | 10:50 AM EDT

STATE OF NORTH CAROLINA
DEPARTMENT OF TRANSPORTATION
RALEIGH
**TRIPLE 9 FT. X 8 FT.
CONCRETE BOX CULVERT
90°-00'-00" SKEW
STAGE I**

ASSEMBLED BY :	ZCS	DATE :	9/21
CHECKED BY :	MGC	DATE :	10/21
DRAWN BY :	JEM 8/89	REV. 6/19	MAA/THC
CHECKED BY :	ARB 8/89		

DOCUMENT NOT CONSIDERED FINAL
UNLESS ALL SIGNATURES COMPLETED

TGS ENGINEERS
706 HILLSBOROUGH STREET
SUITE 200
RALEIGH, NC 27603
PH (919) 773-8887
CORP. LICENSE NO.: C-0275

REVISIONS						SHEET NO.
NO.	BY:	DATE:	NO.	BY:	DATE:	C18-3
1			3			TOTAL SHEETS
2			4			9