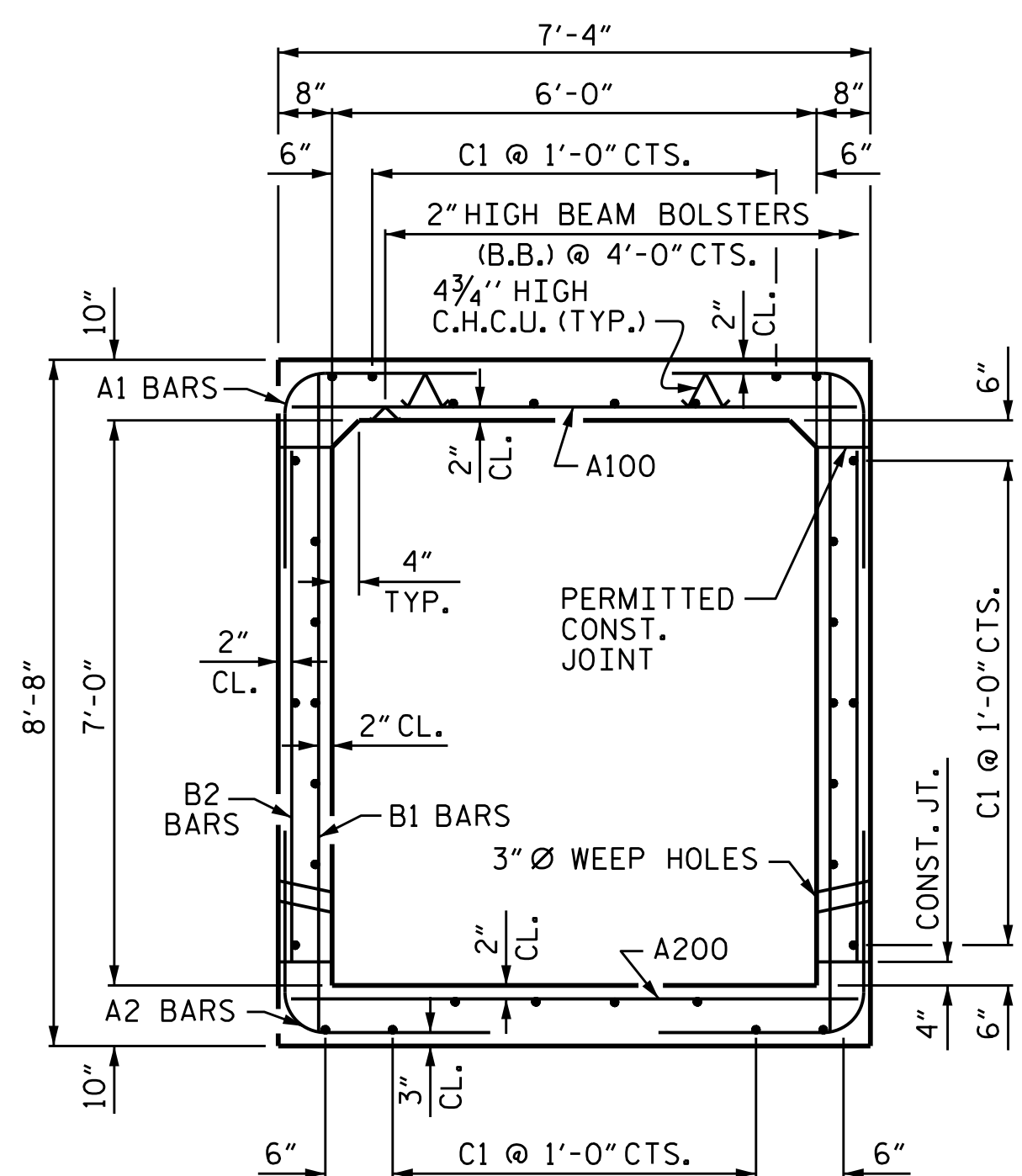
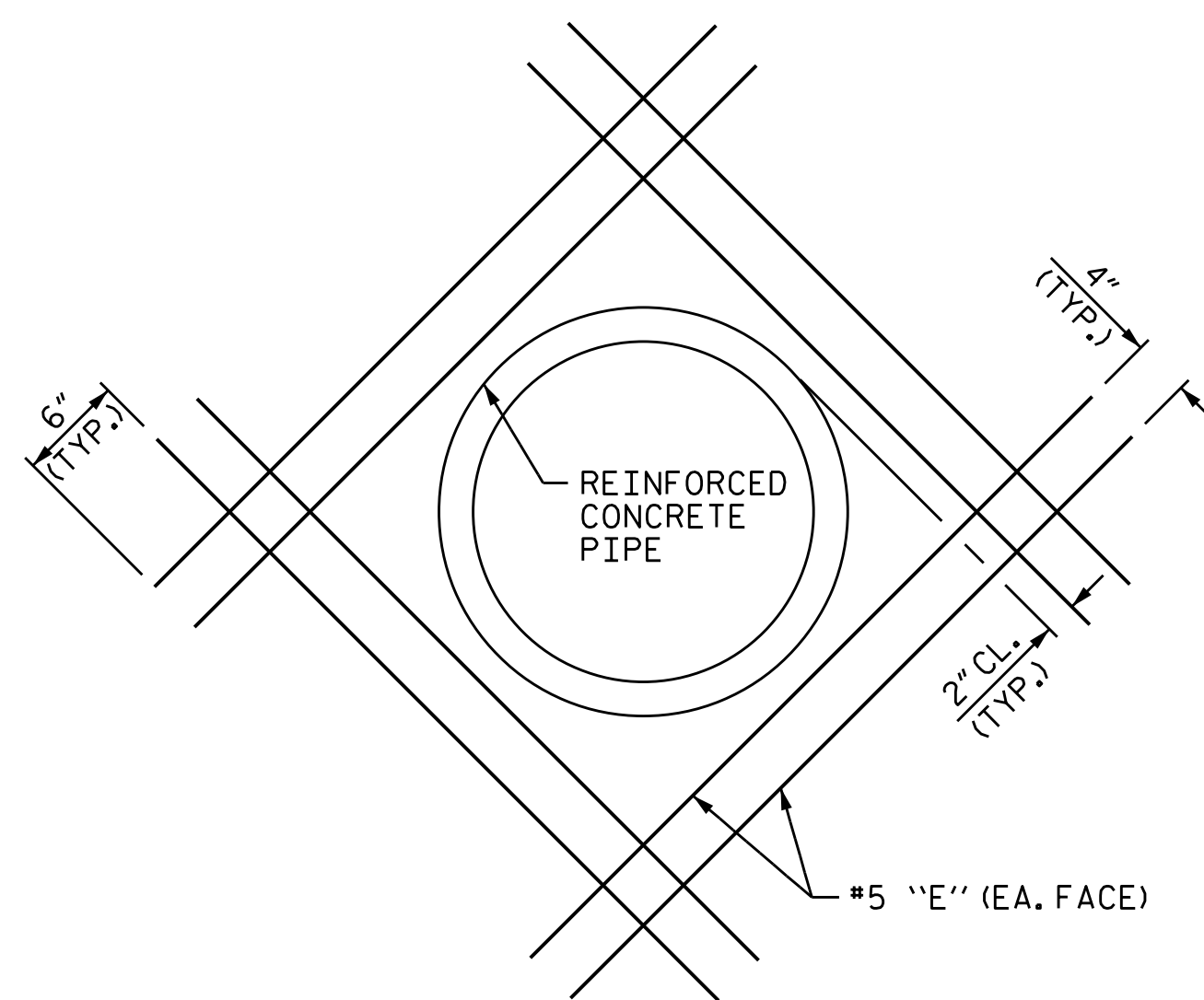


CULVERT SECTION NORMAL TO ROADWAY



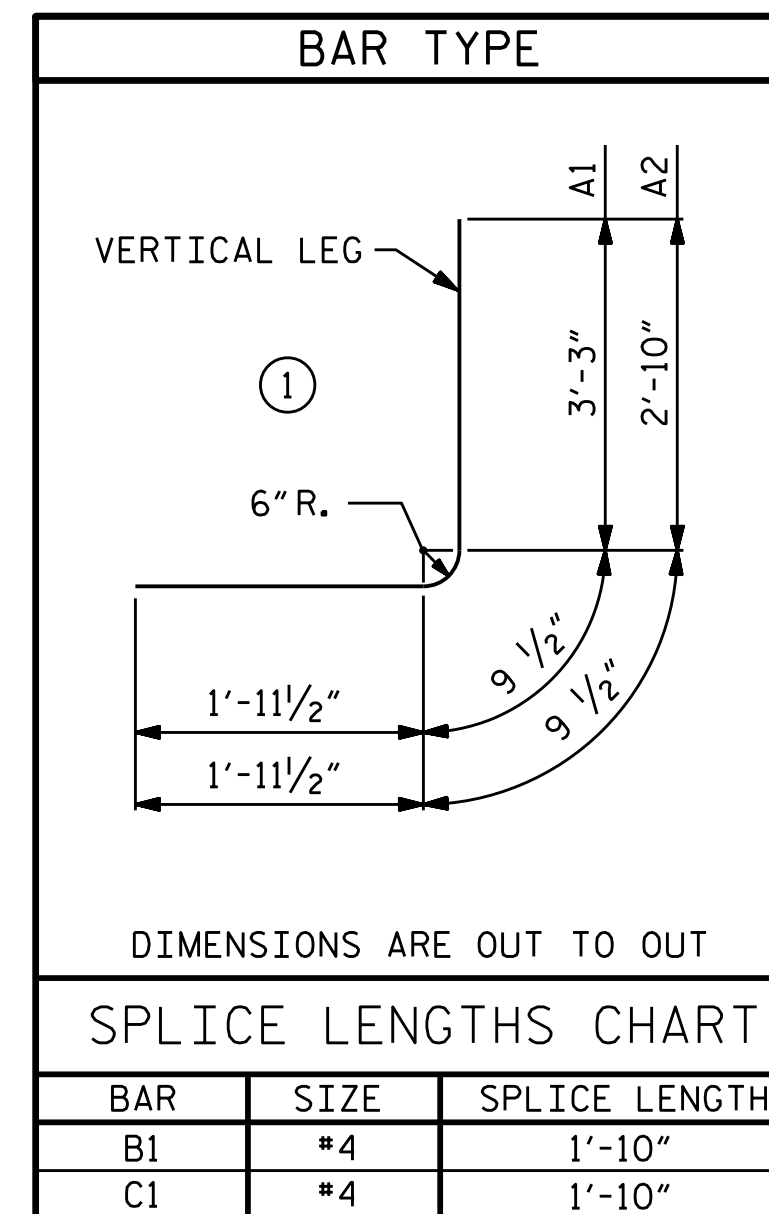
RIGHT ANGLE SECTION OF BARREL

THERE ARE 32 C1 IN SECTION OF BARREL



DETAIL B

THE PIPES THROUGH THE WALL OF THE CULVERT WILL BE LOCATED BY THE ENGINEER. REINFORCING STEEL MAY BE FIELD CUT & FIELD BENT AS NECESSARY TO CLEAR THE PIPE.



STAGE 3 (RIGHT) BAR SCHEDULE					
BAR	NO.	SIZE	TYPE	LENGTH	WEIGHT
A100	231	#4	STR	6'-11"	1067
A101	1	#4	STR	5'-9"	4
A102	1	#4	STR	3'-6"	2
A103	1	#4	STR	6'-5"	4
A104	1	#4	STR	5'-5"	4
A105	1	#4	STR	4'-5"	3
A106	1	#4	STR	3'-5"	2
A107	1	#4	STR	2'-5"	2
A200	154	#5	STR	6'-11"	1111
A201	1	#5	STR	5'-11"	6
A202	1	#5	STR	2'-7"	3
A203	1	#5	STR	5'-10"	6
A204	1	#5	STR	4'-4"	5
A205	1	#5	STR	2'-10"	3
A1	235	#5	1	6'-0"	1471
A2	235	#5	1	5'-7"	1369
B1	158	#5	STR	8'-1"	1332
B2	235	#4	STR	6'-4"	994
C1	128	#4	STR	31'-2"	2665
D1	44	#6	STR	2'-6"	165
E1	16	#5	STR	4'-8"	78
E4	16	#5	STR	4'-2"	70
S2	6	#8	STR	7'-10"	125
S3	6	#8	STR	7'-2"	115
REINFORCING STEEL					10,606 LBS

STAGE 3 (RIGHT) QUANTITIES	
CLASS A CONCRETE	
BARREL @ 0.802 CY/FT	94.9 C.Y.
EDGE BEAMS	1.2 C.Y.
TOTAL	96.1 C.Y.
REINFORCING STEEL	
BARREL	10,606 LBS.
TOTAL	10,606 LBS.
CULVERT EXCAVATION	LUMP SUM
FOUNDATION COND. MAT'L.	95 TONS
FOUNDATION COND. GEOTEXTILE	345 S.Y.

PROJECT NO. I-5987B
ROBESON COUNTY
STATION: 708+48.43 -L-

SHEET 18 OF 20

STATE OF NORTH CAROLINA
DEPARTMENT OF TRANSPORTATION
RALEIGH

SINGLE 6 FT. X 7 FT.
CONCRETE BOX CULVERT
STAGE 3 (RIGHT)

3/16/2022
X:\NCDOT\I-5987B\Structures\Site 16 - 708 + 48.43 -L-Final Plans\Drawings\412.035.I-5987B.Site 16.SMU.CU.018.dgn
User:smassinople

4/12/2022 | 10:44 AM EDT

DOCUMENT NOT CONSIDERED FINAL
UNLESS ALL SIGNATURES COMPLETED

TGS ENGINEERS
706 HILLSBOROUGH STREET
SUITE 200
RALEIGH, NC 27603
PH (919) 773-8887
CORP. LICENSE NO.: C-0275

REVISIONS

NO.	BY:	DATE:	NO.	BY:	DATE:
1			3		
2			4		

SHEET NO. C16-18
TOTAL SHEETS 20

FILE NAME: 412.035.I-5987B.Site 16.SMU.CU.018.dgn

DRAWN BY: STM DATE: 10/21
CHECKED BY: MGC DATE: 03/22
DESIGN ENGINEER OF RECORD: STM DATE: 03/22