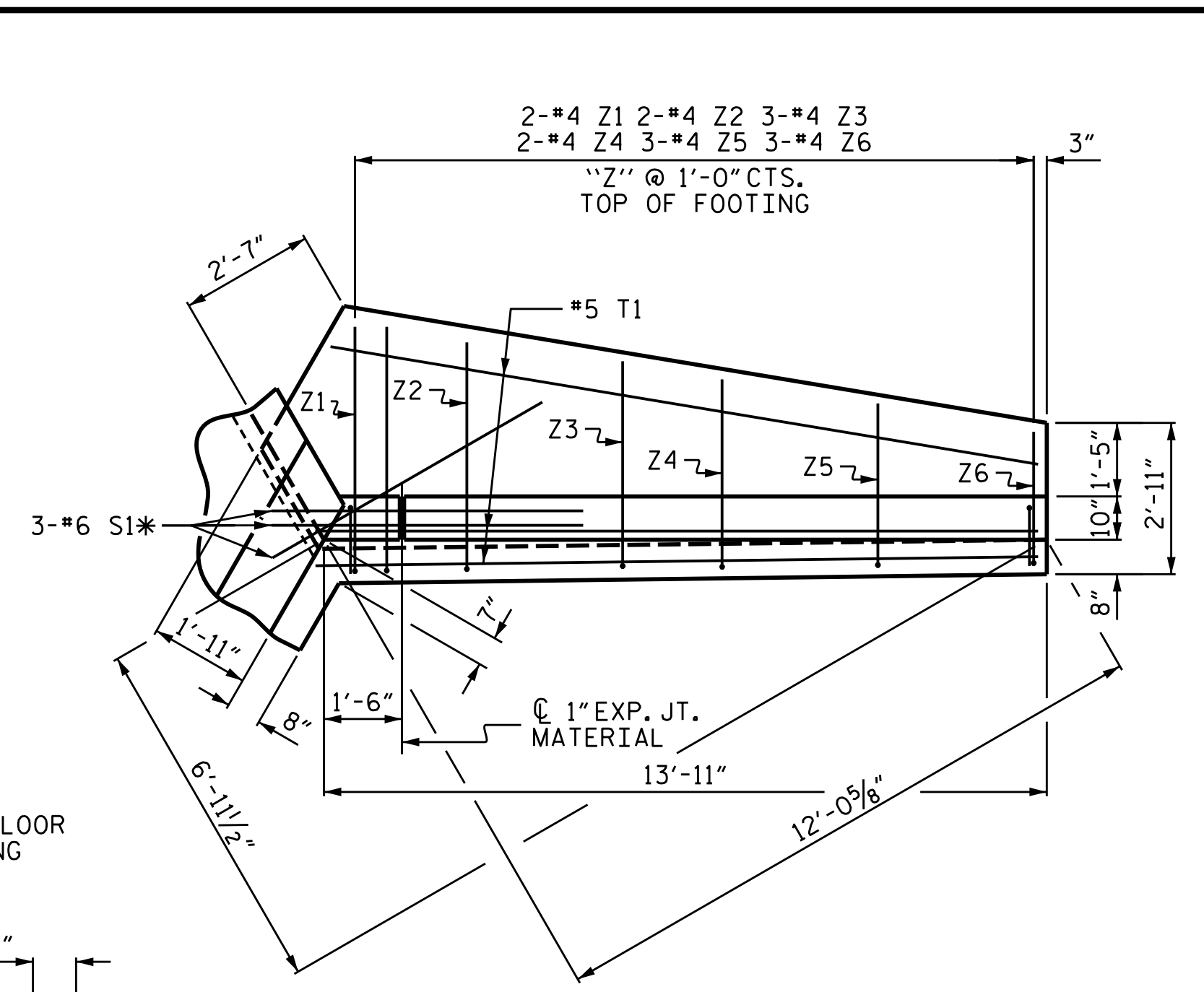
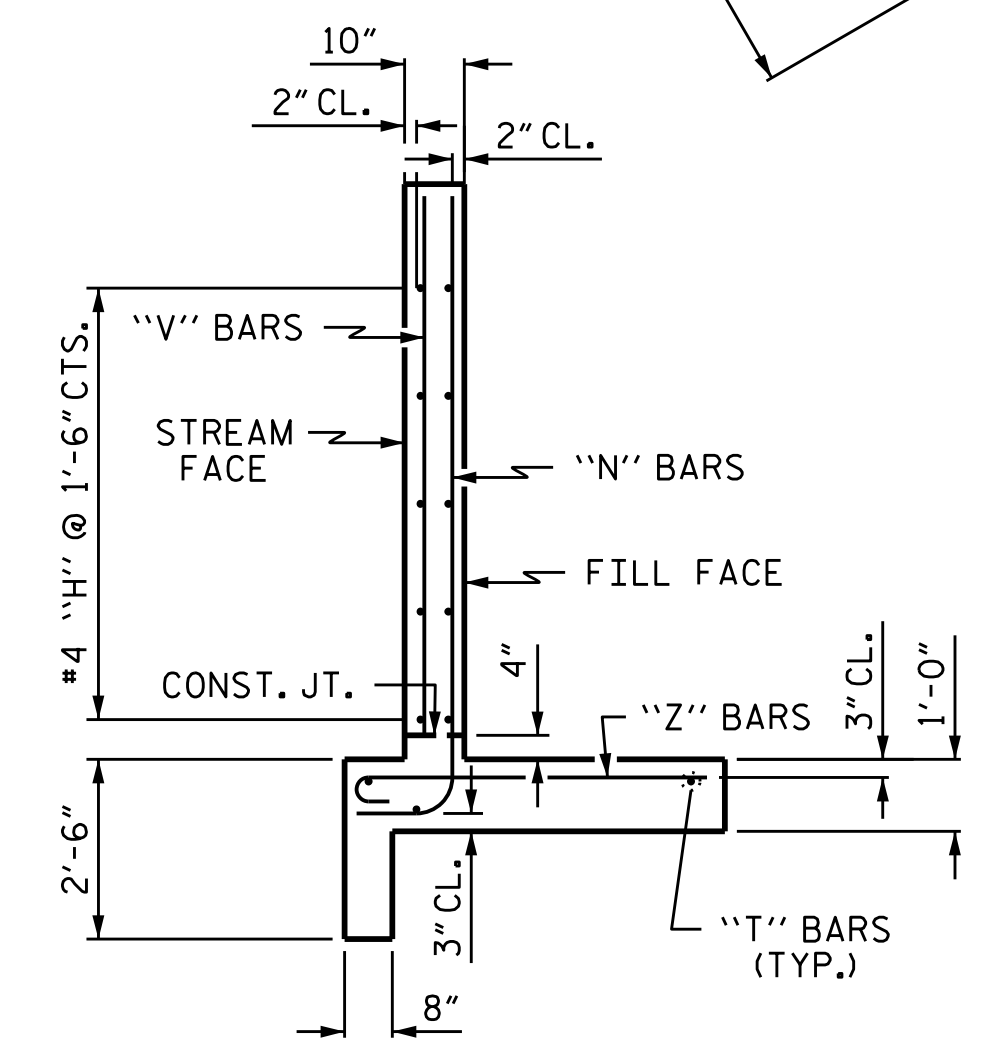


PLAN W1

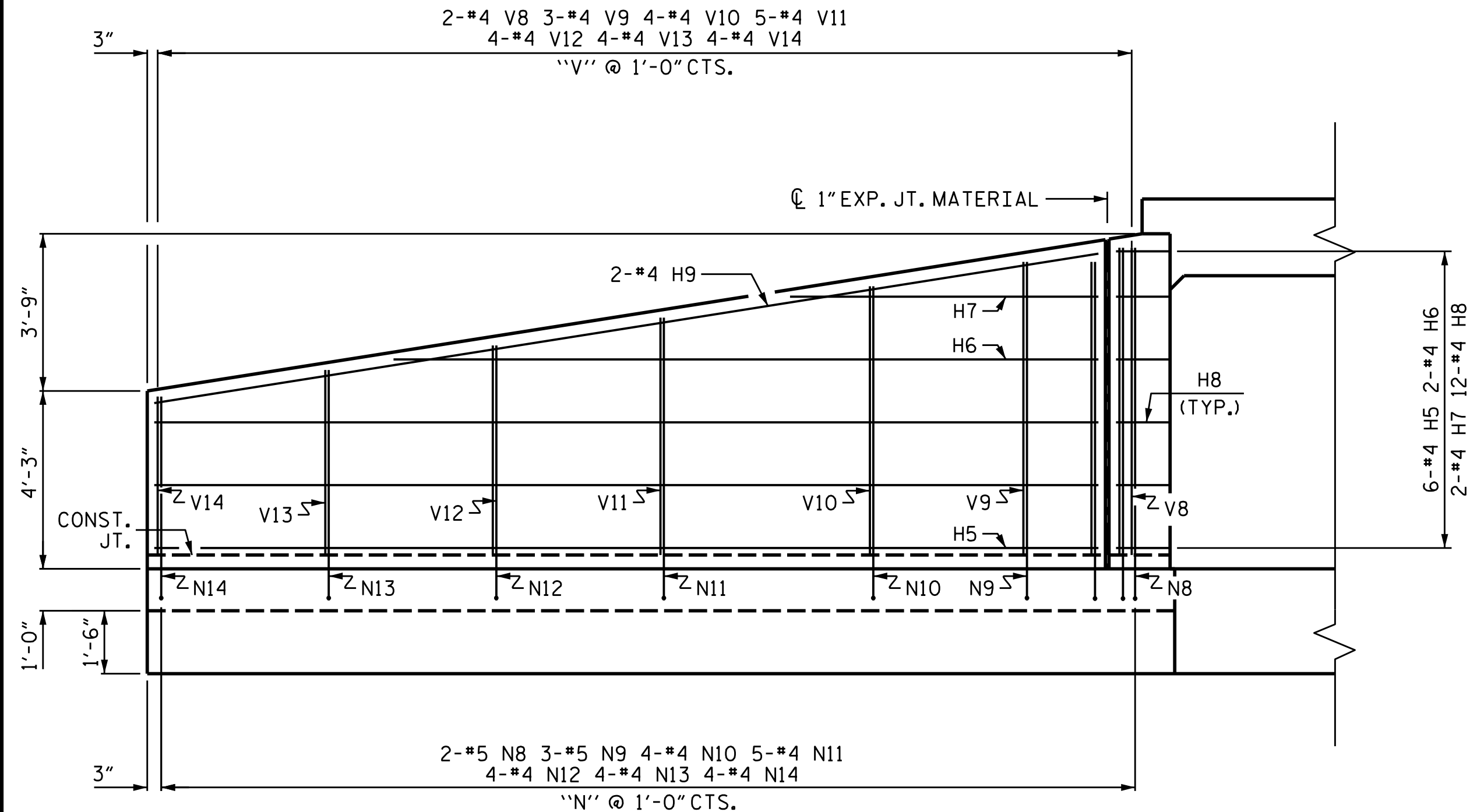


PLAN W2

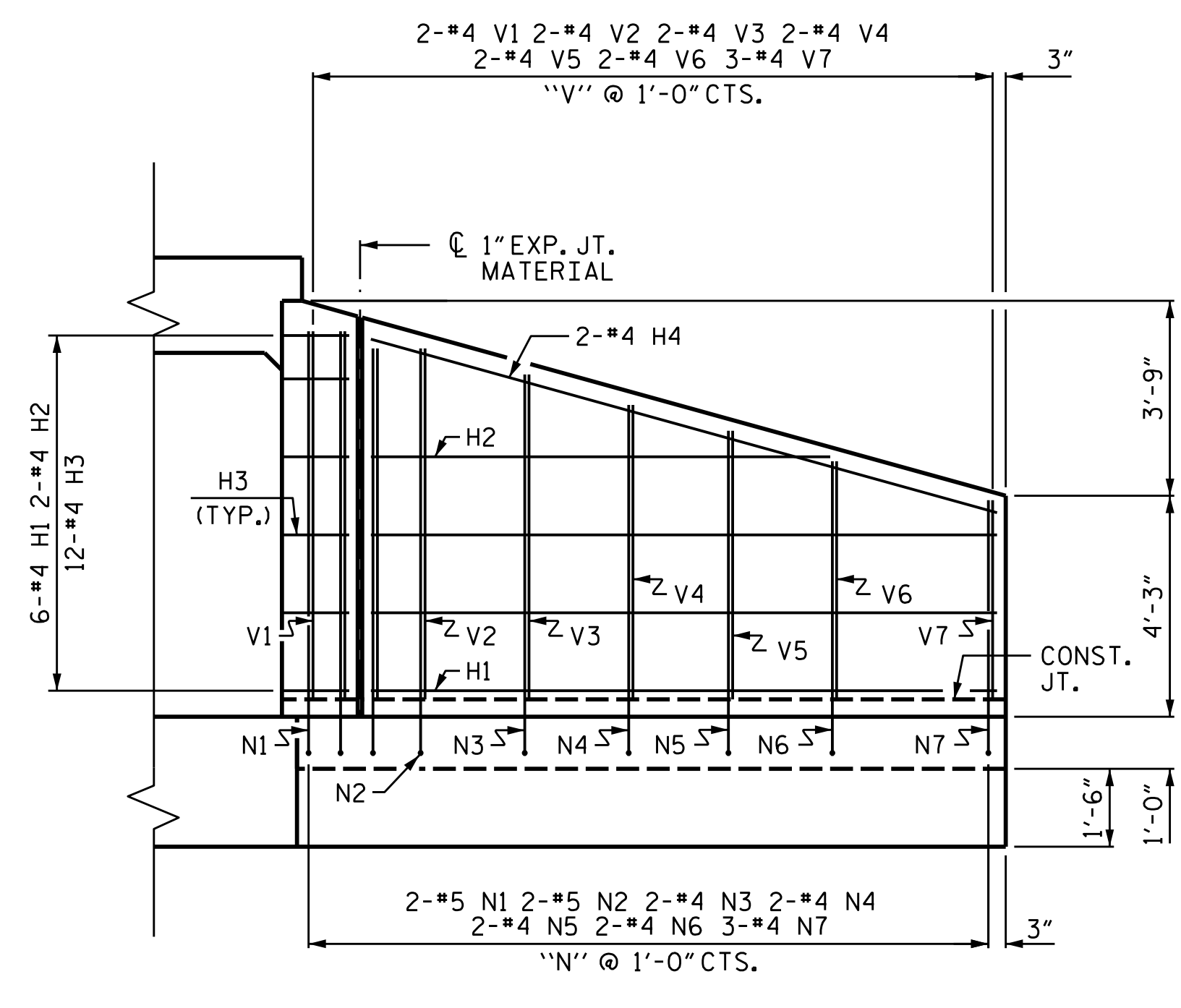
\* BOTTOM OF FLOOR SLAB & FOOTING



TYPICAL WING SECTION



ELEVATION W1



ELEVATION W2

BAR TYPES

1: 2'-0" x 1'-8 3/4" x 1'-3" x 1'-0"

2: 2'-0" x 1'-0" x 1'-3" x 1'-8 3/4"

3: 6" RAD. x 8" x 9 1/2"

4: HK.

Z1	4'-9"	6"
Z2	4'-5"	6"
Z3	4'-0"	6"
Z4	3'-8"	6"
Z5	3'-2"	6"
Z6	2'-7"	6"
Z7	4'-8"	6"
Z8	4'-4"	6"
Z9	3'-11"	6"
Z10	3'-6"	6"
Z11	3'-1"	6"
Z12	2'-7"	6"

ALL BAR DIMENSIONS ARE OUT TO OUT.

BILL OF MATERIAL					
BAR NO.	SIZE	TYPE	LENGTH	WEIGHT	
H1	6	#4	STR	12'-0"	48
H2	2	#4	STR	8'-10"	12
H3	12	#4	1	3'-3"	26
H4	2	#4	STR	12'-6"	17
H5	6	#4	STR	22'-5"	90
H6	2	#4	STR	16'-10"	22
H7	2	#4	STR	7'-4"	10
H8	12	#4	2	3'-3"	26
H9	2	#4	STR	22'-10"	31
N1	2	#5	3	9'-4"	19
N2	2	#5	3	8'-9"	18
N3	2	#4	3	8'-3"	11
N4	2	#4	3	7'-8"	10
N5	2	#4	3	7'-2"	10
N6	2	#4	3	6'-7"	9
N7	3	#4	3	5'-10"	12
N8	2	#5	3	9'-4"	19
N9	3	#5	3	9'-0"	28
N10	4	#4	3	8'-5"	22
N11	5	#4	3	7'-8"	26
N12	4	#4	3	7'-0"	19
N13	4	#4	3	6'-5"	17
N14	4	#4	3	5'-10"	16
S1	6	#6	STR	6'-0"	54
T1	3	#5	STR	13'-9"	43
T2	3	#5	STR	24'-4"	76
V1	2	#4	STR	7'-1"	9
V2	2	#4	STR	6'-8"	9
V3	2	#4	STR	6'-2"	8
V4	2	#4	STR	5'-7"	7
V5	2	#4	STR	5'-1"	7
V6	2	#4	STR	4'-6"	6
V7	3	#4	STR	3'-8"	7
V8	2	#4	STR	7'-4"	10
V9	3	#4	STR	6'-10"	14
V10	4	#4	STR	6'-3"	17
V11	5	#4	STR	5'-6"	18
V12	4	#4	STR	4'-11"	13
V13	4	#4	STR	4'-3"	11
V14	4	#4	STR	3'-8"	10
Z1	2	#4	4	5'-3"	7
Z2	2	#4	4	4'-11"	7
Z3	3	#4	4	4'-6"	9
Z4	2	#4	4	4'-2"	6
Z5	3	#4	4	3'-8"	7
Z6	3	#4	4	3'-1"	6
Z7	5	#4	4	5'-2"	17
Z8	3	#4	4	4'-10"	10
Z9	4	#4	4	4'-5"	12
Z10	4	#4	4	4'-0"	11
Z11	4	#4	4	3'-7"	10
Z12	5	#4	4	3'-1"	10

NOTES

A 3 FOOT STRIP OF FILTER FABRIC SHALL BE ATTACHED TO THE FILL FACE OF THE WING COVERING THE ENTIRE LENGTH OF THE EXPANSION JOINT.

G1 BARS IN HEADWALL ARE INCLUDED WITH THE BARREL REINFORCING STEEL.

REINFORCING STEEL FOR 2 WINGS	949 LBS
CLASS A CONCRETE	
2 WINGS	15.0 CY
1 HEADWALL	0.4 CY
1 END CURTAIN WALL	0.4 CY
TOTAL	15.8 CY

PROJECT NO. I-5987B  
 ROBESON COUNTY  
 STATION: 708+48.43 -L-  
 SHEET 11 OF 20

3/16/2022  
 X:\NCDOT\I-5987B\Structures\Site 16 - 708 + 48.43 -L-\Final Plans\DCNs\412.021.I-5987B.Site 16.SMU.CU.011.dgn  
 Users\smassinople

706 HILLSBOROUGH STREET  
 SUITE 200  
 RALEIGH, NC 27603  
 PH (919) 773-8887  
 CORP. LICENSE NO.: C-0275

STATE OF NORTH CAROLINA  
 DEPARTMENT OF TRANSPORTATION  
 RALEIGH

WINGS FOR  
 CONCRETE BOX CULVERT  
 STAGE 1 (RIGHT SIDE)  
 H = 7'-0" SLOPE = 3:1  
 120° SKEW

REVISIONS					
NO.	BY:	DATE:	NO.	BY:	DATE:
1			3		
2			4		

SHEET NO. C16-11  
 TOTAL SHEETS 20

ASSEMBLED BY : STM  
 CHECKED BY : MGC  
 DESIGN ENGINEER OF RECORD : MGC

DATE : 09/21  
 DATE : 03/22  
 DATE : 03/22