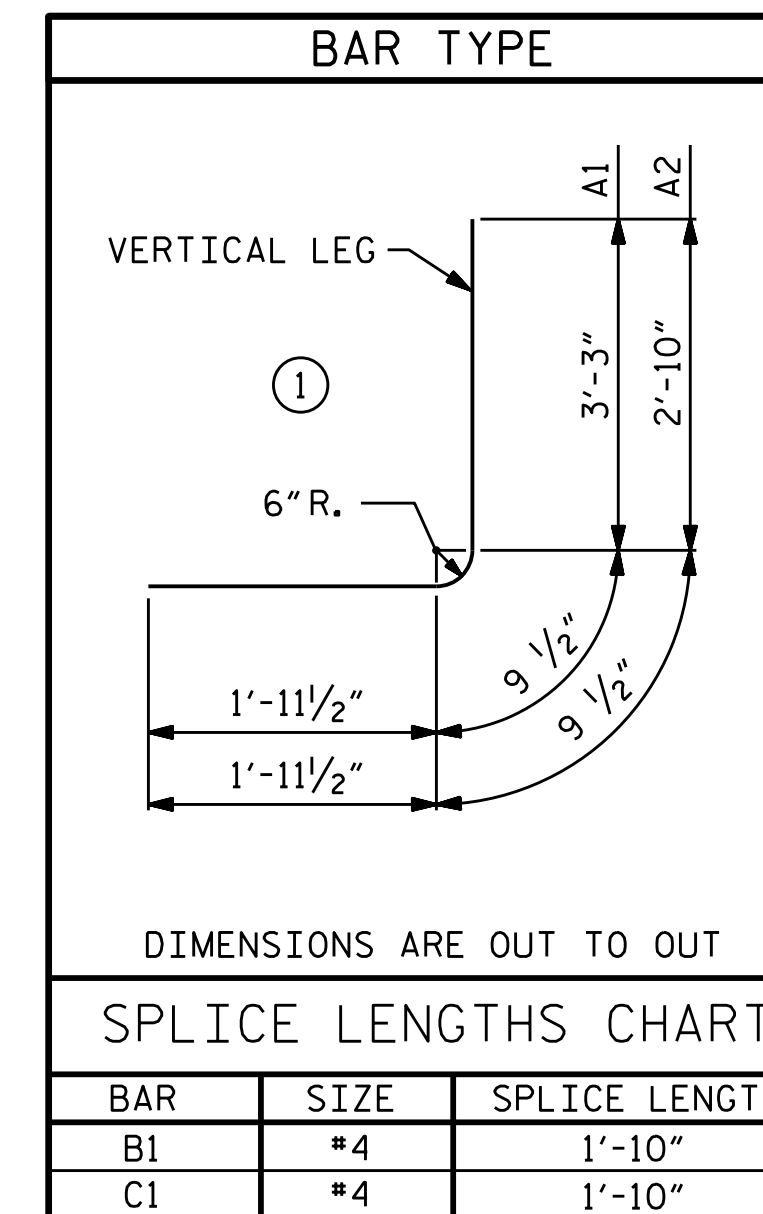
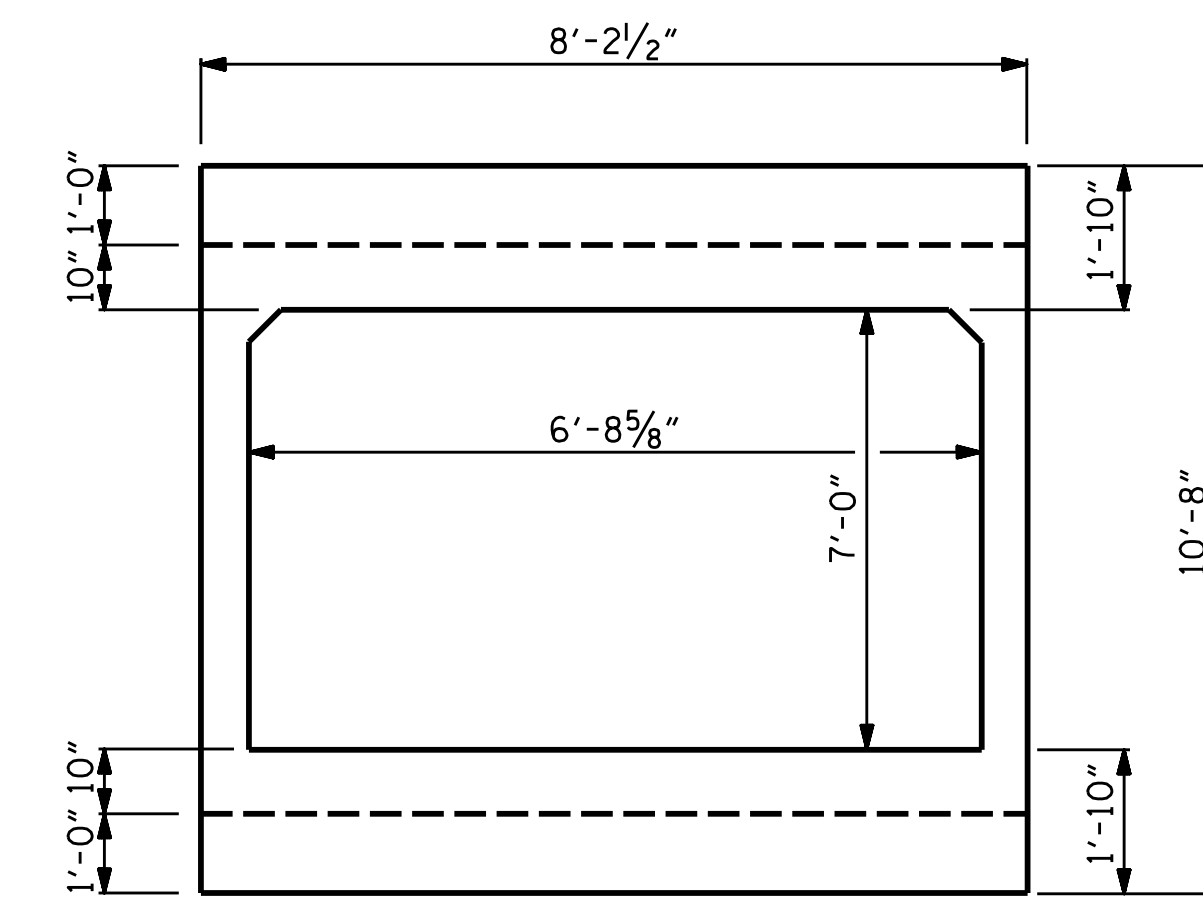


CULVERT SECTION NORMAL TO ROADWAY

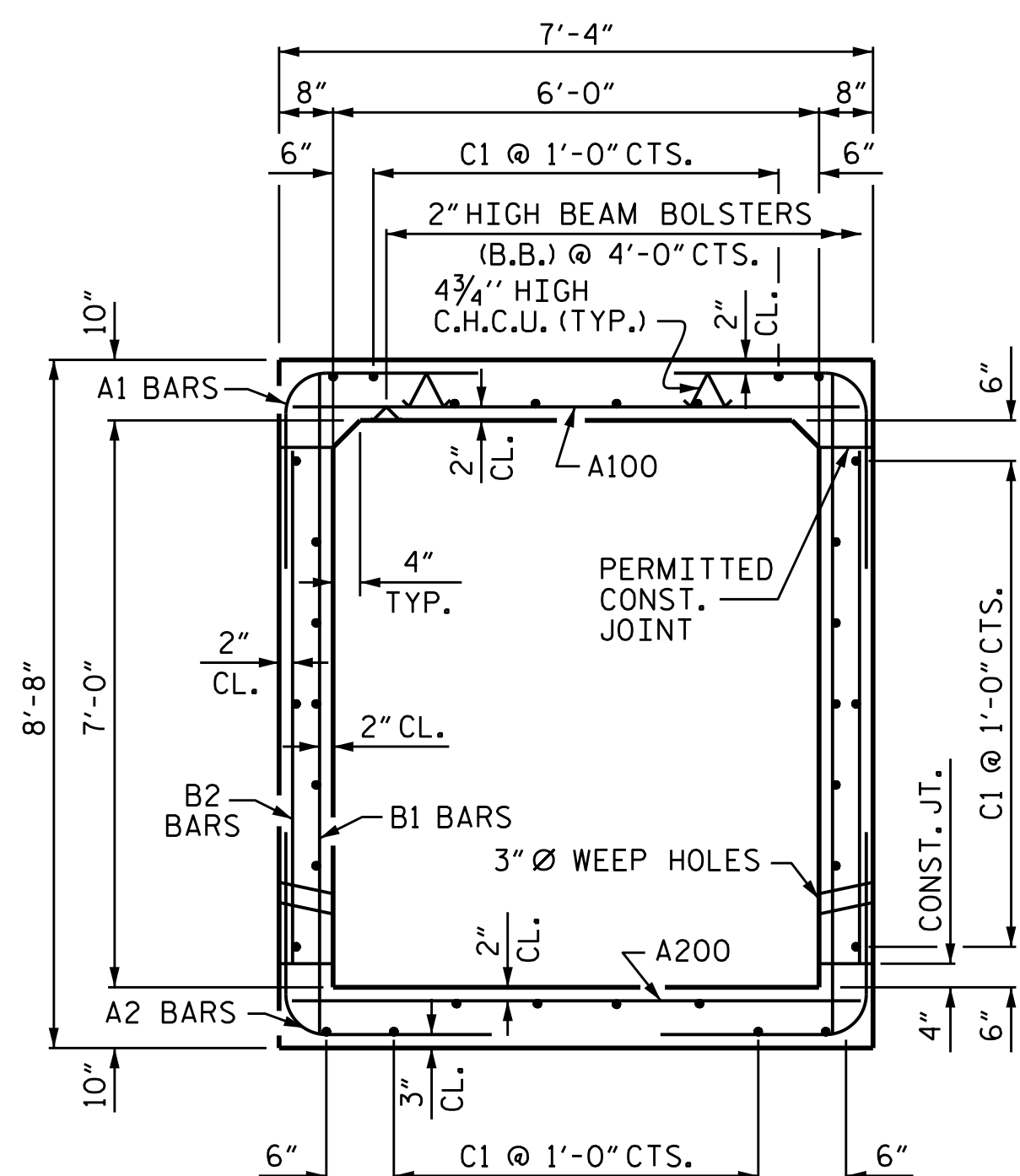


STAGE 1 (RIGHT) BAR SCHEDULE						
BAR	NO.	SIZE	TYPE	LENGTH	WEIGHT	
A100	330	#4	STR	6'-11"	1525	
A101	1	#4	STR	6'-5"	4	
A102	1	#4	STR	5'-6"	4	
A103	1	#4	STR	4'-8"	3	
A104	1	#4	STR	3'-10"	3	
A105	1	#4	STR	2'-11"	2	
A106	1	#4	STR	2'-1"	1	
A107	1	#4	STR	6'-4"	4	
A108	1	#4	STR	5'-4"	4	
A109	1	#4	STR	4'-4"	3	
A110	1	#4	STR	3'-4"	2	
A111	1	#4	STR	2'-4"	2	
A200	220	#5	STR	6'-11"	1587	
A201	1	#5	STR	6'-5"	7	
A202	1	#5	STR	5'-1"	5	
A203	1	#5	STR	3'-10"	4	
A204	1	#5	STR	2'-6"	3	
A205	1	#5	STR	5'-10"	6	
A206	1	#5	STR	4'-4"	5	
A207	1	#5	STR	2'-10"	3	
A1	338	#5	1	6'-0"	2115	
A2	338	#5	1	5'-7"	1968	
B1	226	#5	STR	8'-1"	1905	
B2	338	#4	STR	6'-4"	1430	
C1	160	#4	STR	35'-3"	3768	
G1	4	#5	STR	8'-0"	33	
S2	12	#8	STR	7'-10"	251	
REINFORCING STEEL					14,647	LBS

STAGE 1 (RIGHT) QUANTITIES	
CLASS A CONCRETE	
BARREL @ 0.802 CY/FT	135.5 C.Y.
WINGS, ETC.	15.8 C.Y.
EDGE BEAMS	0.6 C.Y.
TOTAL	151.9 C.Y.
REINFORCING STEEL	
BARREL	14,647 LBS.
WINGS, ETC.	949 LBS.
TOTAL	15,596 LBS.
CULVERT EXCAVATION	LUMP SUM
FOUNDATION COND. MAT'L.	135 TONS
FOUNDATION COND. GEOTEXTILE	465 S.Y.

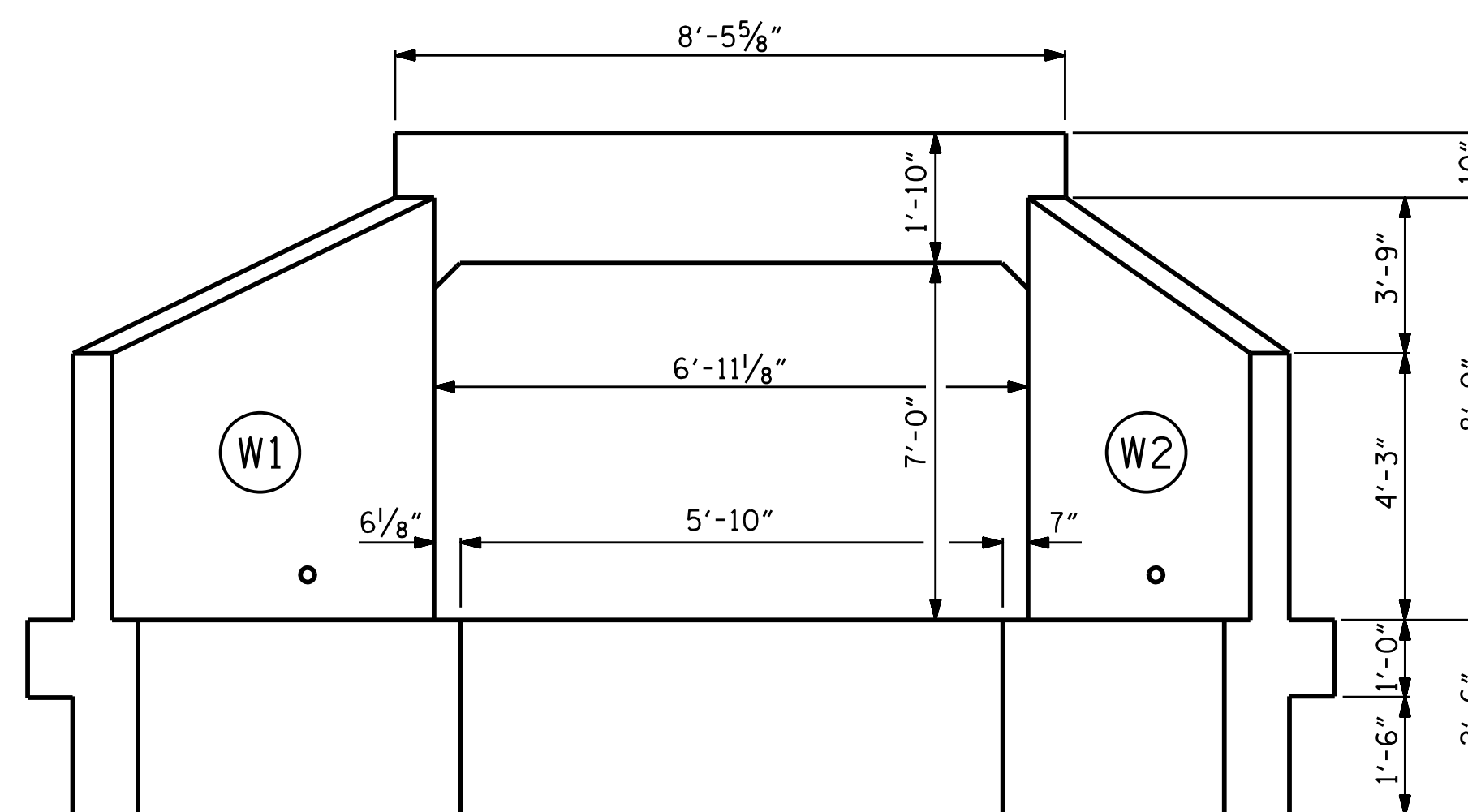


LEFT END ELEVATION



RIGHT ANGLE SECTION OF BARREL

THERE ARE 32 C1 IN SECTION OF BARREL



OUTLET END ELEVATION

PROJECT NO. I-5987B
ROBESON COUNTY
 STATION: 708+48.43 -L-

SHEET 8 OF 20

DOCUMENT NOT CONSIDERED FINAL UNLESS ALL SIGNATURES COMPLETED

STATE OF NORTH CAROLINA
 DEPARTMENT OF TRANSPORTATION
 RALEIGH

SINGLE 6 FT. X 7 FT. CONCRETE BOX CULVERT STAGE 1 (RIGHT)

REVISIONS						SHEET NO.
NO.	BY:	DATE:	NO.	BY:	DATE:	C16-8
1			3			TOTAL SHEETS
2			4			20

DRAWN BY : STM DATE : 09/21
 CHECKED BY : MGC DATE : 03/22
 DESIGN ENGINEER OF RECORD: STM DATE : 03/22