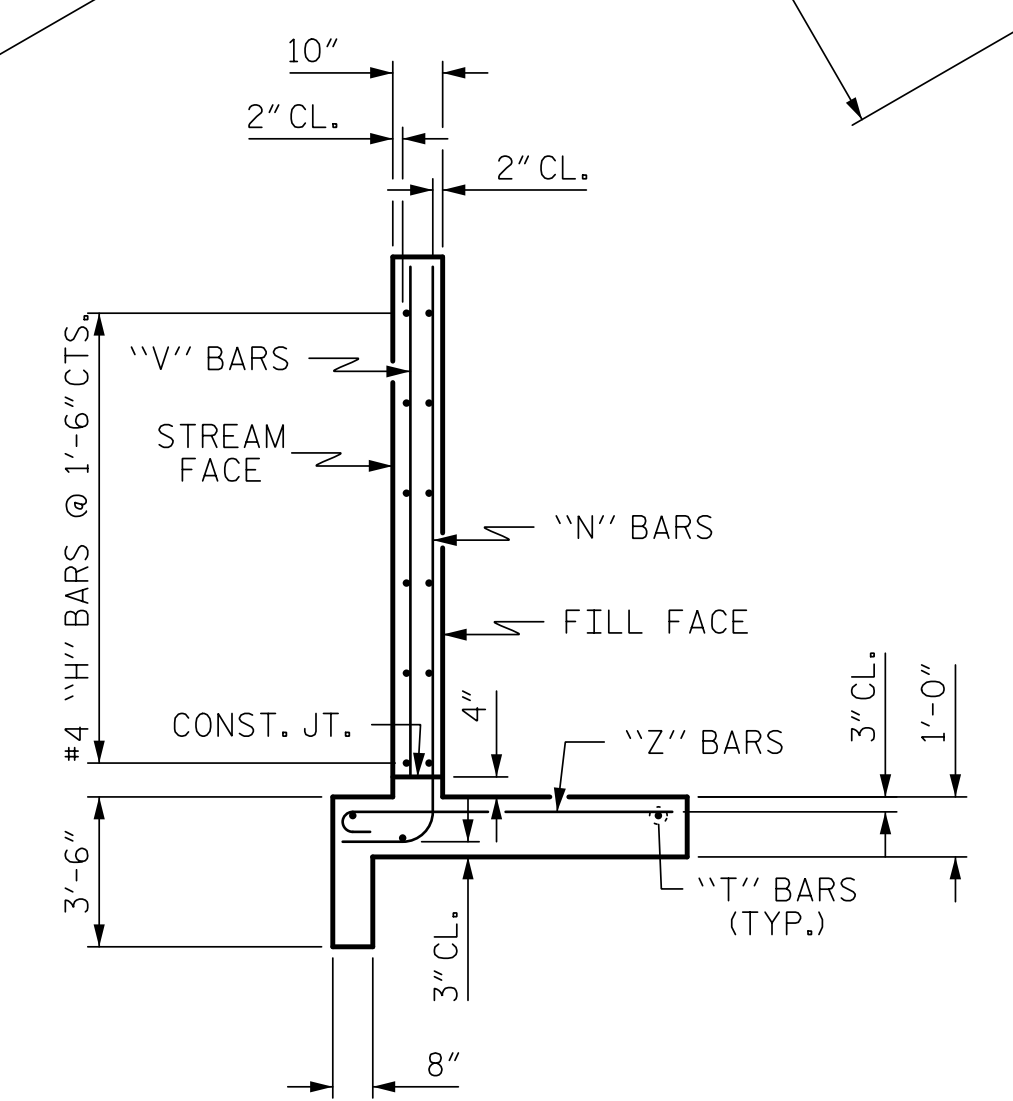
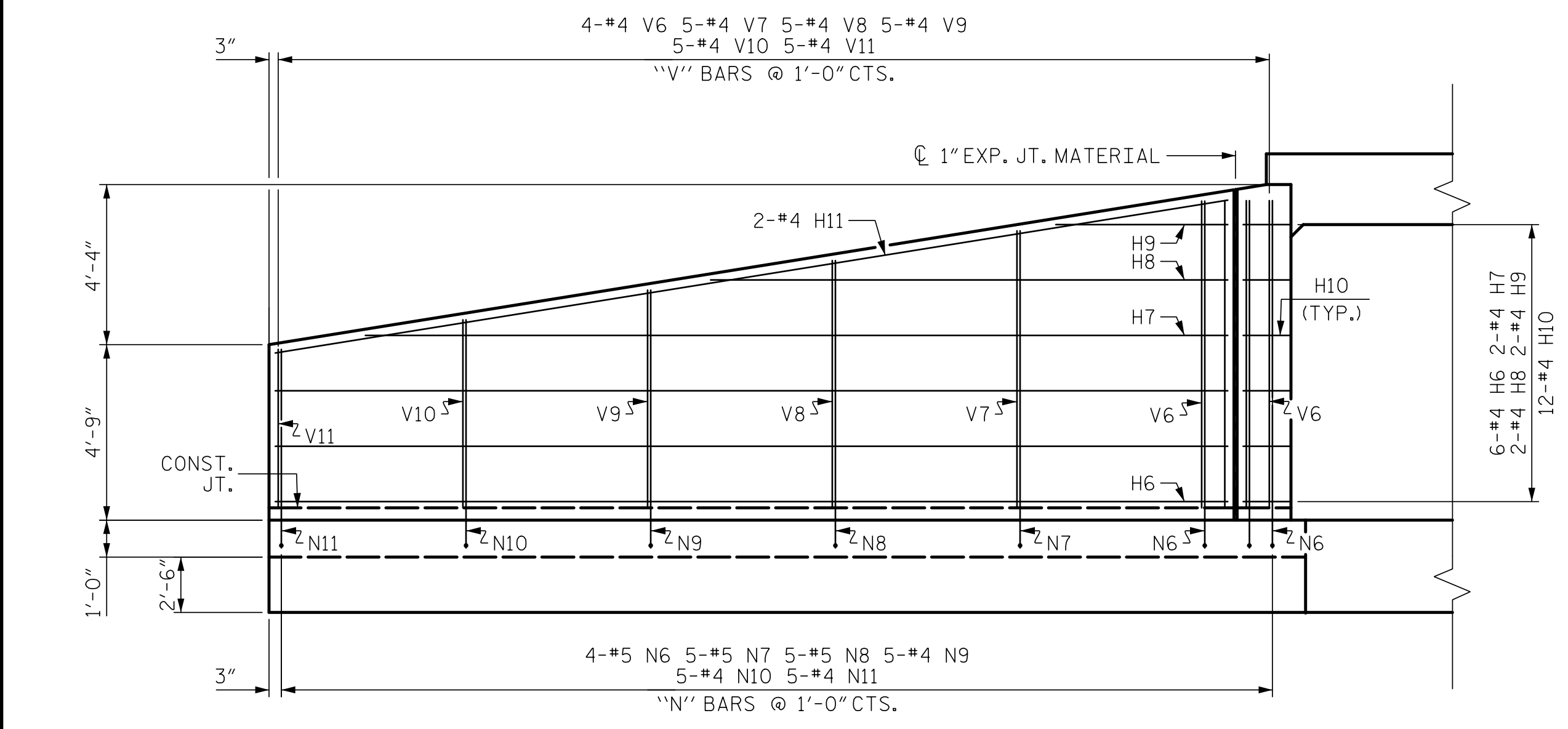


PLAN W1

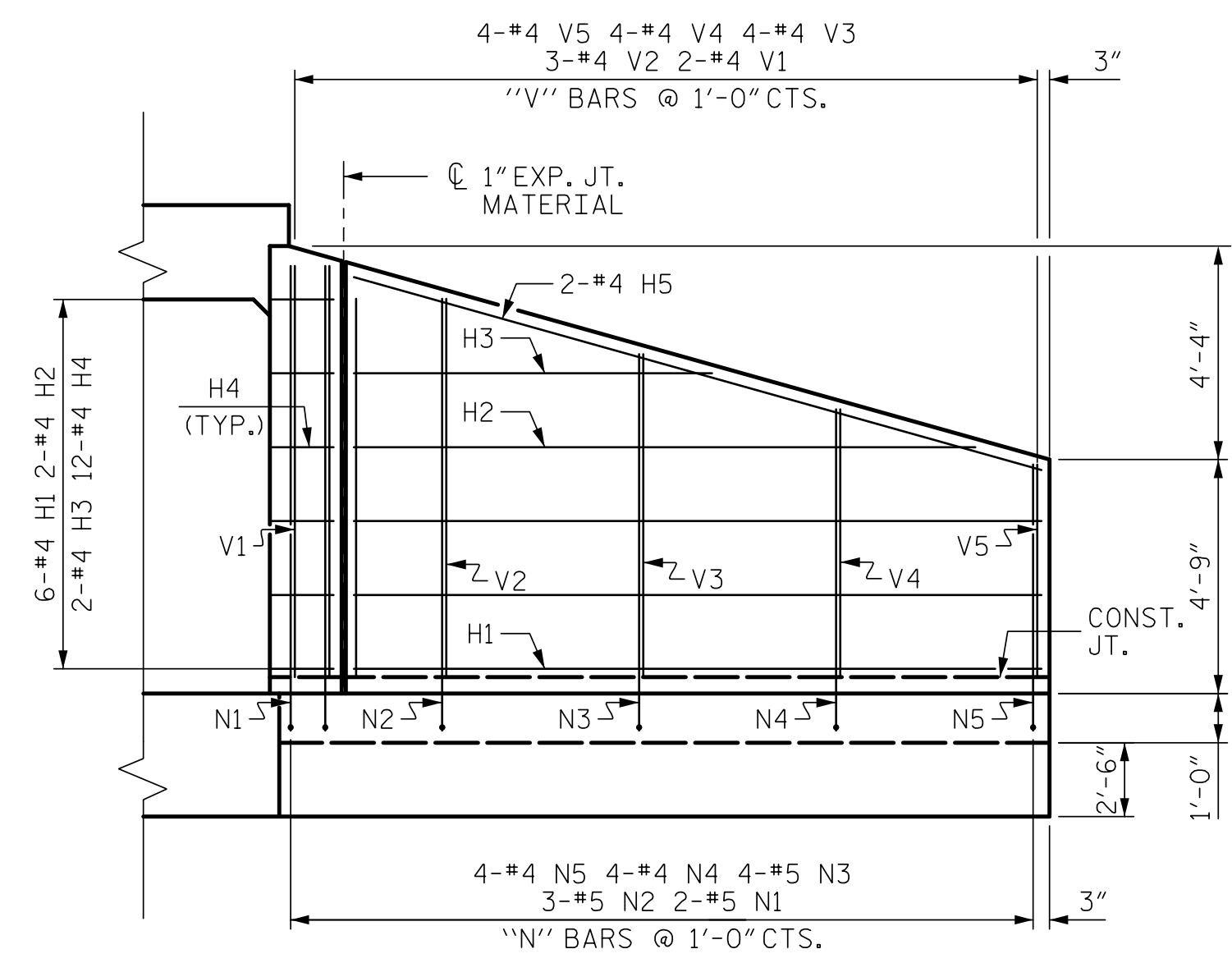
PLAN W2



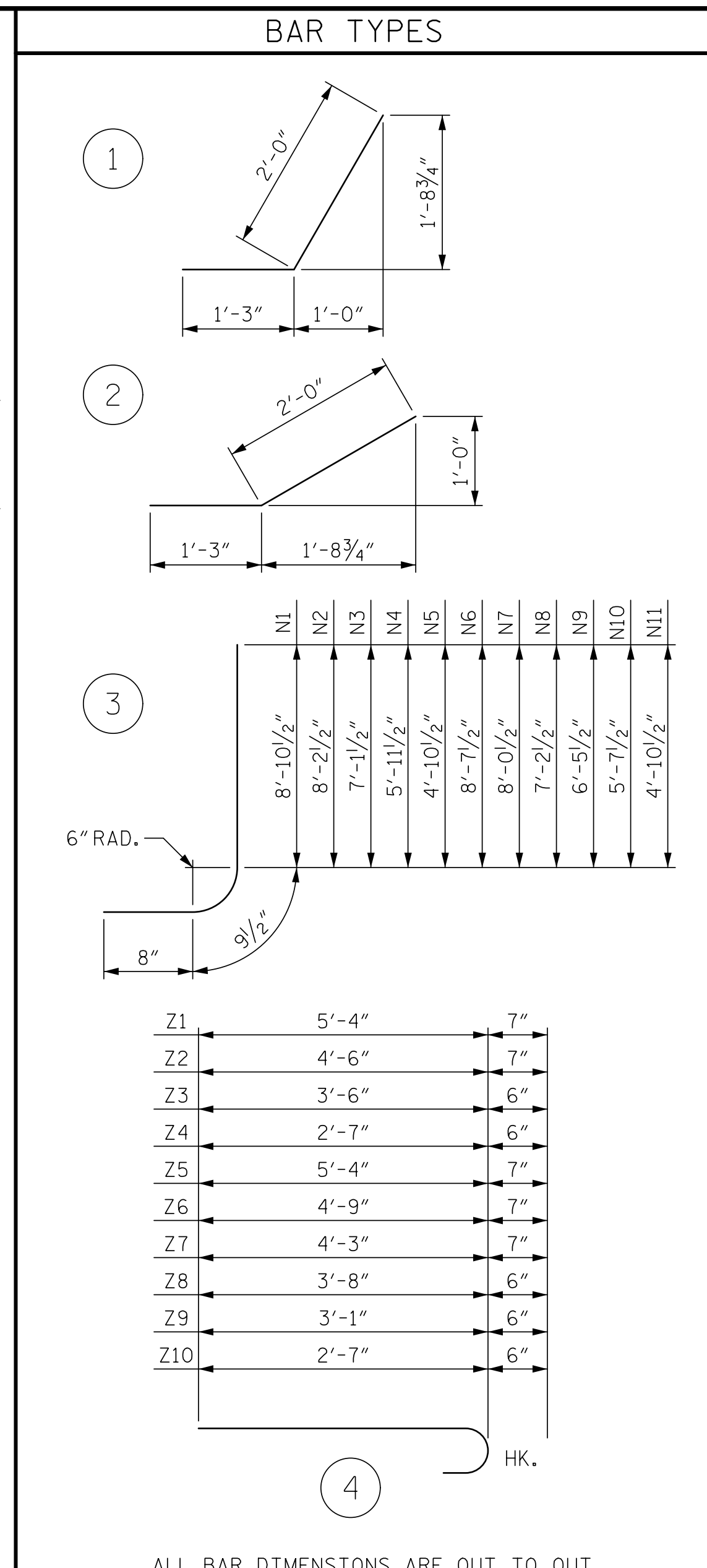
TYPICAL WING SECTION



ELEVATION W1



ELEVATION W2



NOTES:
 A 3 FOOT STRIP OF FILTER FABRIC SHALL BE ATTACHED TO THE FILL FACE OF THE WING COVERING THE ENTIRE LENGTH OF THE EXPANSION JOINT.
 G1 BARS IN HEADWALL ARE INCLUDED WITH THE BARREL REINFORCING STEEL.

BAR NO.	SIZE	TYPE	LENGTH	WEIGHT
H1	12	#4	STR 14'-0"	112
H2	4	#4	STR 13'-1"	35
H3	4	#4	STR 7'-7"	20
H4	24	#4	1 3'-3"	52
H5	4	#4	STR 14'-5"	39
H6	12	#4	STR 25'-10"	207
H7	4	#4	STR 24'-0"	64
H8	4	#4	STR 14'-6"	39
H9	4	#4	STR 4'-10"	13
H10	24	#4	2 3'-3"	52
H11	4	#4	STR 26'-3"	70
N1	4	#5	3 10'-4"	43
N2	6	#5	3 9'-8"	61
N3	8	#5	3 8'-7"	72
N4	8	#4	3 7'-5"	40
N5	8	#4	3 6'-4"	34
N6	8	#5	3 10'-1"	84
N7	10	#5	3 9'-6"	99
N8	10	#5	3 8'-8"	90
N9	10	#4	3 7'-11"	53
N10	10	#4	3 7'-1"	47
N11	10	#4	3 6'-4"	42
S1	12	#6	STR 6'-0"	108
T1	6	#5	STR 15'-10"	99
T2	6	#5	STR 27'-8"	173
V1	4	#4	STR 8'-4"	22
V2	6	#4	STR 7'-6"	30
V3	8	#4	STR 6'-5"	34
V4	8	#4	STR 5'-4"	29
V5	8	#4	STR 4'-3"	23
V6	8	#4	STR 8'-1"	43
V7	10	#4	STR 7'-4"	49
V8	10	#4	STR 6'-6"	43
V9	10	#4	STR 5'-9"	38
V10	10	#4	STR 5'-0"	33
V11	10	#4	STR 4'-2"	28
Z1	4	#5	4 5'-11"	25
Z2	10	#5	4 5'-1"	53
Z3	10	#4	4 4'-0"	27
Z4	10	#4	4 3'-1"	21
Z5	6	#5	4 5'-11"	37
Z6	10	#5	4 5'-4"	56
Z7	10	#5	4 4'-10"	50
Z8	10	#4	4 4'-2"	28
Z9	10	#4	4 3'-7"	24
Z10	10	#4	4 3'-1"	21

REINFORCING STEEL 2462 LBS FOR 4 WINGS
 CLASS A CONCRETE
 4 WINGS 40.7 CY
 2 HEADWALLS 1.9 CY
 2 END CURTAIN WALLS 3.0 CY
 TOTAL 45.6 CY

PROJECT NO. I-5987B
 ROBESON COUNTY
 STATION: 677+13.20 -L-
 SHEET 13 OF 13

STATE OF NORTH CAROLINA
 DEPARTMENT OF TRANSPORTATION
 RALEIGH

WINGS FOR CONCRETE BOX CULVERT
 H = 8'-0" SLOPE = 3:1

4/12/2022 10:34 AM EDT
 DOCUMENT NOT CONSIDERED FINAL UNLESS ALL SIGNATURES COMPLETED
 TGS ENGINEERS
 706 HILLSBOROUGH STREET SUITE 200
 RALEIGH, NC 27603
 PH (919) 773-8887
 CORP. LICENSE NO.: C-0275

DRAWN BY: ZCS DATE: 2/21
 CHECKED BY: MGC DATE: 10/21
 DESIGN ENGINEER OF RECORD: ZCS DATE: 10/21

NO.	BY:	DATE:	NO.	BY:	DATE:
1			3		
2			4		

SHEET NO. C15-13
 TOTAL SHEETS 13