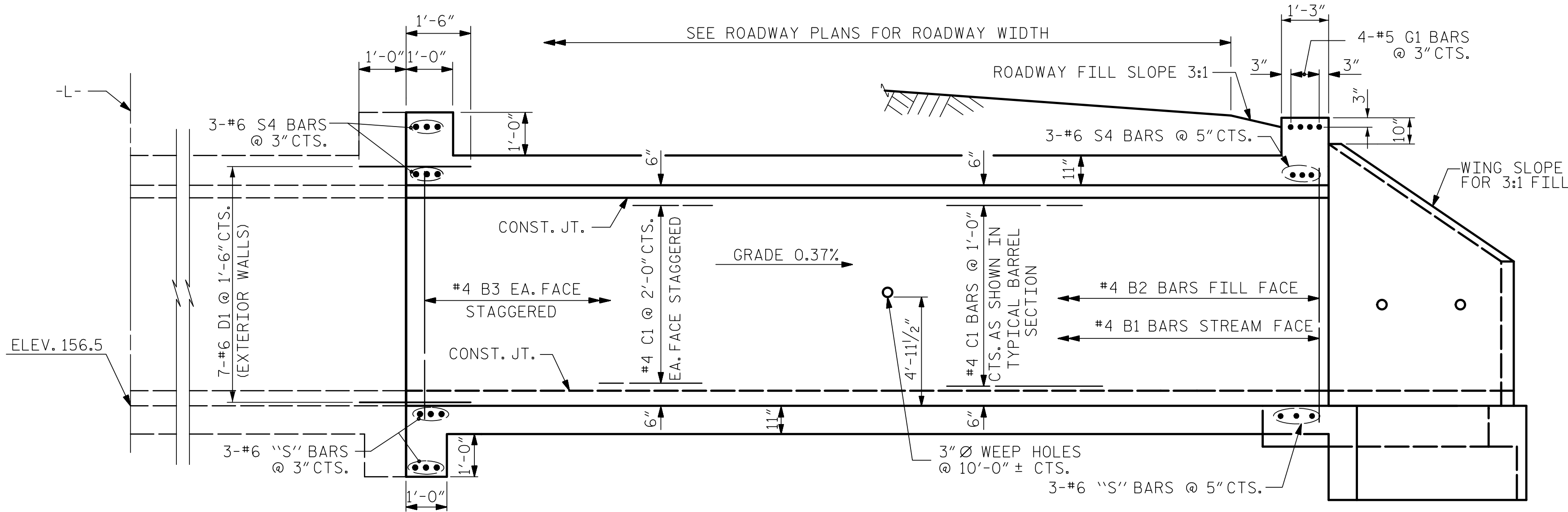
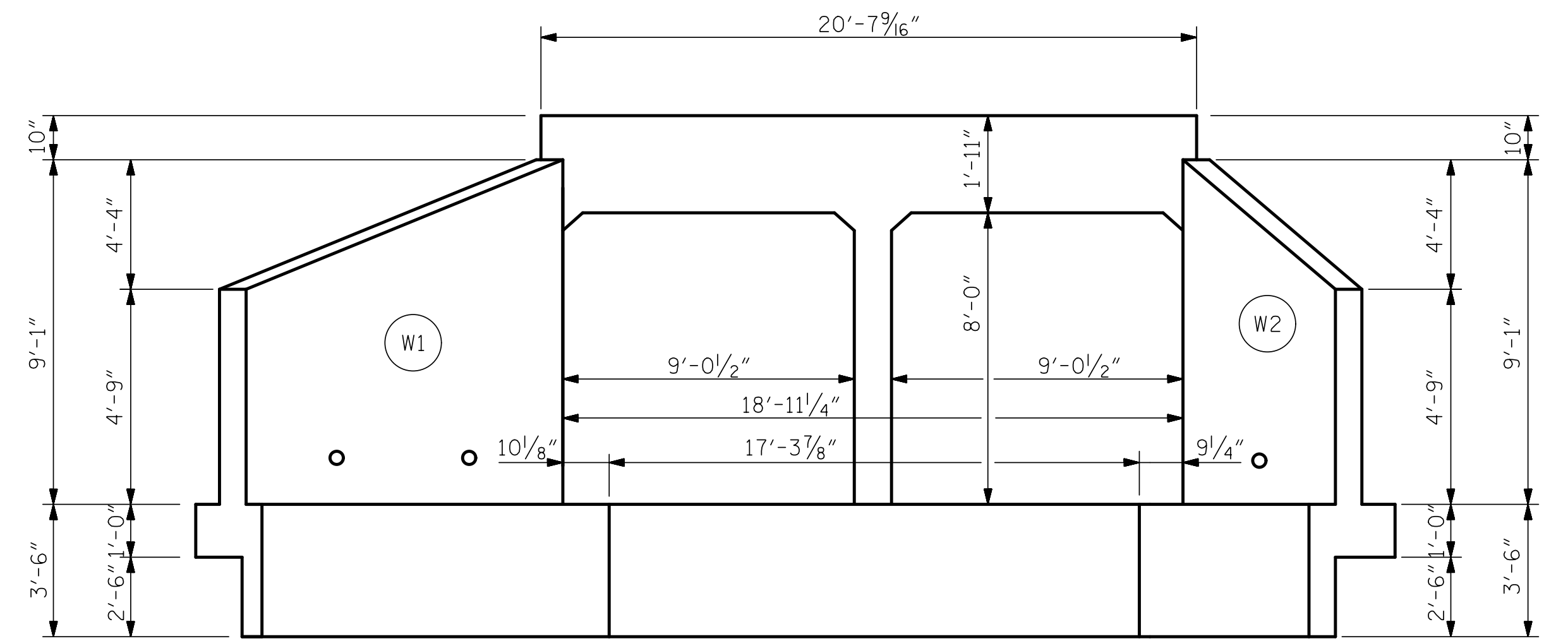


RIGHT ANGLE SECTION OF BARREL

THERE ARE 72 "C" BARS IN SECTION OF BARREL.
(LOOKING DOWNSTREAM)

BAR NO.	SIZE	TYPE	LENGTH	WEIGHT	BAR NO.	SIZE	TYPE	LENGTH	WEIGHT	BAR NO.	SIZE	TYPE	LENGTH	WEIGHT	BAR NO.	SIZE	TYPE	LENGTH	WEIGHT	
A100	#4	STR	17'-11"	718	A250	#4	STR	7'-6"	341	A400	#5	STR	12'-8"	964	A1	#4	STR	6'-0"	673	
A101	#4	STR	16'-10"	22	A251	#4	STR	6'-9"	5	A401	#5	STR	11'-7"	12	A2	#4	STR	5'-7"	992	
A102	#4	STR	15'-7"	21	A252	#4	STR	5'-6"	4	A402	#5	STR	10'-6"	11						
A103	#4	STR	14'-4"	19	A253	#4	STR	4'-3"	3	A403	#5	STR	9'-5"	10	B1	#4	STR	9'-4"	611	
A104	#4	STR	13'-1"	17	A254	#4	STR	2'-11"	2	A404	#5	STR	8'-3"	9	B2	#4	STR	7'-4"	823	
A105	#4	STR	11'-10"	16	A255	#4	STR	6'-6"	4	A405	#5	STR	7'-2"	7	B3	#4	STR	9'-4"	611	
A106	#4	STR	10'-6"	14	A256	#4	STR	5'-3"	4	A406	#5	STR	6'-1"	6						
A107	#4	STR	9'-3"	12	A257	#4	STR	4'-0"	3	A407	#5	STR	5'-0"	5	C1	#4	STR	25'-5"	2445	
A108	#4	STR	8'-0"	11	A258	#4	STR	2'-9"	2	A408	#5	STR	3'-10"	4						
A109	#4	STR	6'-9"	9						A409	#5	STR	11'-5"	12	S2	#6	STR	14'-7"	197	
A110	#4	STR	5'-6"	7	A300	#5	STR	17'-11"	1271	A410	#5	STR	10'-4"	11	S3	#6	STR	8'-5"	114	
A111	#4	STR	4'-3"	6	A301	#5	STR	16'-11"	35	A411	#5	STR	9'-2"	10	S4	#6	STR	20'-3"	274	
A112	#4	STR	2'-11"	4	A302	#5	STR	15'-10"	33	A412	#5	STR	8'-1"	8						
					A303	#5	STR	14'-9"	31	A413	#5	STR	7'-0"	7	G1	#5	STR	20'-3"	84	
A200	#4	STR	12'-5"	531	A304	#5	STR	13'-7"	28	A414	#5	STR	5'-10"	6						
A201	#4	STR	11'-3"	8	A305	#5	STR	12'-6"	26	A415	#5	STR	4'-9"	5	D1	#6	STR	2'-6"	143	
A202	#4	STR	10'-0"	7	A306	#5	STR	11'-5"	24	A416	#5	STR	3'-8"	4	D2	#6	STR	1'-6"	14	
A203	#4	STR	8'-9"	6	A307	#5	STR	10'-4"	22											
A204	#4	STR	7'-6"	5	A308	#5	STR	9'-2"	19	A450	#5	STR	7'-6"	602						
A205	#4	STR	6'-3"	4	A309	#5	STR	8'-1"	17	A451	#5	STR	7'-0"	7						
A206	#4	STR	4'-11"	3	A310	#5	STR	7'-0"	15	A452	#5	STR	5'-10"	6						
A207	#4	STR	3'-8"	2	A311	#5	STR	5'-10"	12	A453	#5	STR	4'-9"	5						
A208	#4	STR	11'-10"	8	A312	#5	STR	4'-9"	10	A454	#5	STR	3'-8"	4						
A209	#4	STR	10'-6"	7	A313	#5	STR	3'-8"	8	A455	#5	STR	6'-7"	7						
A210	#4	STR	9'-3"	6						A456	#5	STR	5'-6"	6						
A211	#4	STR	8'-0"	5						A457	#5	STR	4'-5"	5						
A212	#4	STR	6'-9"	5						A458	#5	STR	3'-3"	3						
A213	#4	STR	5'-6"	4																
A214	#4	STR	4'-3"	3																
A215	#4	STR	2'-11"	2																
REINFORCING STEEL																			12,118	LBS

CLASS A CONCRETE	
BARREL @ 1.91 CY/FT	94.1 C.Y.
WINGS, ETC.	22.8 C.Y.
2 EDGE BEAMS	1.5 C.Y.
SILLS	0.6 C.Y.
TOTAL	119.0 C.Y.
REINFORCING STEEL	
BARREL & SILLS	12,118 LBS.
WINGS, ETC.	1,231 LBS.
TOTAL	13,349 LBS.
CULVERT EXCAVATION	LUMP SUM
FOUNDATION COND. MAT'L.	78 TONS
FOUNDATION COND. GEOTEXTILE	270 SQ. YDS.



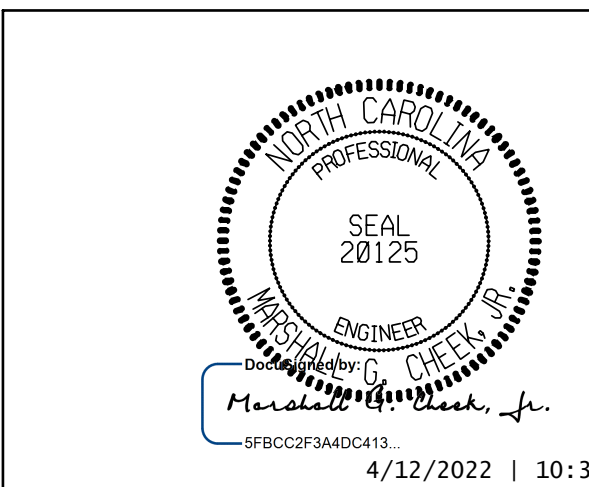
STAGE II (RIGHT) - CULVERT SECTION NORMAL TO ROADWAY

DRAWN BY: ZCS DATE: 9/21
 CHECKED BY: MGC DATE: 10/21
 DESIGN ENGINEER OF RECORD: ZCS DATE: 10/21

VERTICAL LEG	A1	A2
6" R.	2'-10"	2'-5"
9 1/2"	2'-4 1/2"	2'-4 1/2"
9 1/2"	2'-4 1/2"	2'-4 1/2"
DIMENSIONS ARE OUT TO OUT		
SPlice LENGTHS CHART		
BAR	SIZE	SPlice LENGTH
B1	#4	1'-10"
C1	#4	1'-10"
A200	#4	1'-10"
A400	#5	2'-2"
"S"	#6	2'-9"

END ELEVATION NORMAL TO SKEW

PROJECT NO. I-5987B
 ROBESON COUNTY
 STATION: 677+13.20 -L-



DEPARTMENT OF TRANSPORTATION
 RALEIGH
 DOUBLE 8 FT. X 8 FT.
 CONCRETE BOX CULVERT
 STAGE II (RIGHT)

DOCUMENT NOT CONSIDERED FINAL UNLESS ALL SIGNATURES COMPLETED					
REVISIONS					
NO.	BY:	DATE:	NO.	BY:	DATE:
1			3		
2			4		
SHEET NO. C15-9					TOTAL SHEETS 13