

BILL OF MATERIAL						
FOR ONE APPROACH SLAB (2 REQ'D.)						
BAR	NO.	SIZE	TYPE	LENGTH	WEIGHT	
*A1	26	#4	STR	33'-6"	582	
A2	26	#4	STR	33'-6"	582	
*B1	66	#5	STR	24'-1"	1,658	
B2	66	#6	STR	24'-7"	2,437	
REINFORCING STEEL					3,019 LBS.	
* EPOXY COATED REINFORCING STEEL					2,240 LBS.	
CLASS AA CONCRETE					36.2 C.Y.	

SPLICE LENGTHS		
BAR SIZE	EPOXY COATED	UNCOATED
#4	1'-11"	1'-7"
#5	2'-5"	2'-0"
#6	3'-7"	2'-5"

**NOTES:**

APPROACH SLAB SHALL NOT BE CONSTRUCTED PRIOR TO COMPLETION OF THE BRIDGE DECK.

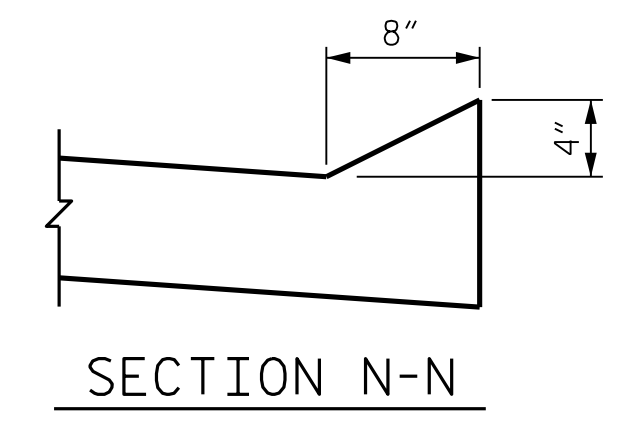
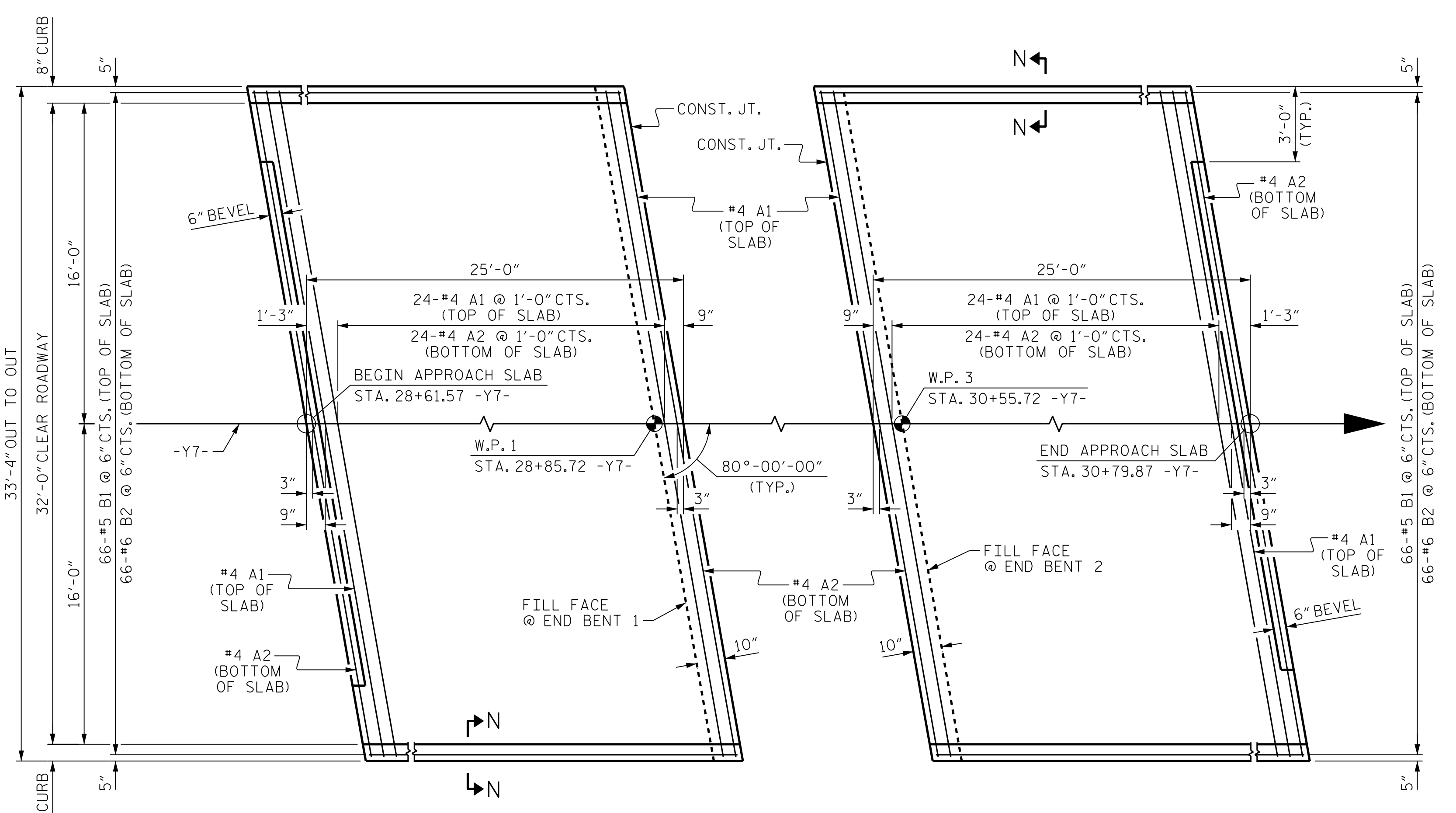
FOR BRIDGE APPROACH FILL INCLUDING GEOTEXTILE AND SELECT MATERIAL, SEE ROADWAY PLANS.

GEOTEXTILE SHALL BE TYPE 1 IN ACCORDANCE WITH THE STANDARD SPECIFICATIONS SECTION 1056.

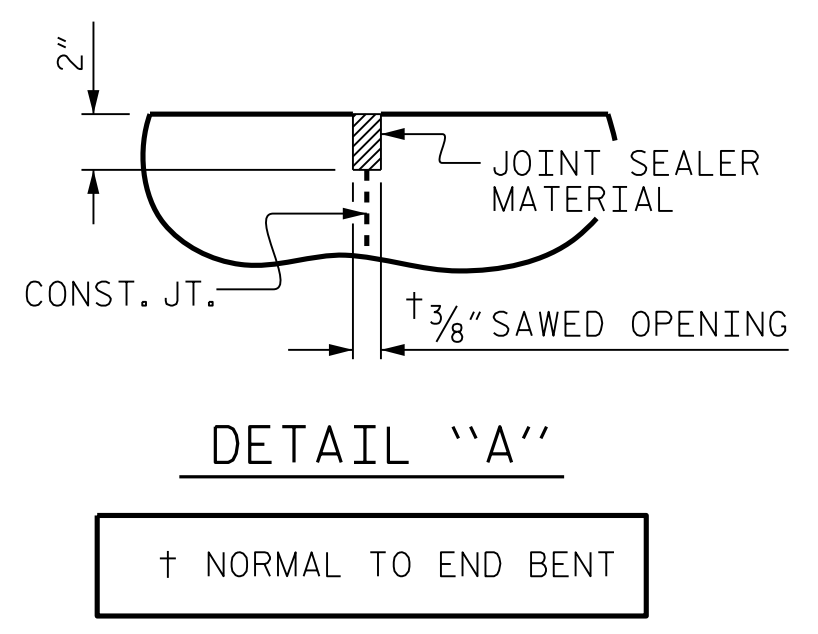
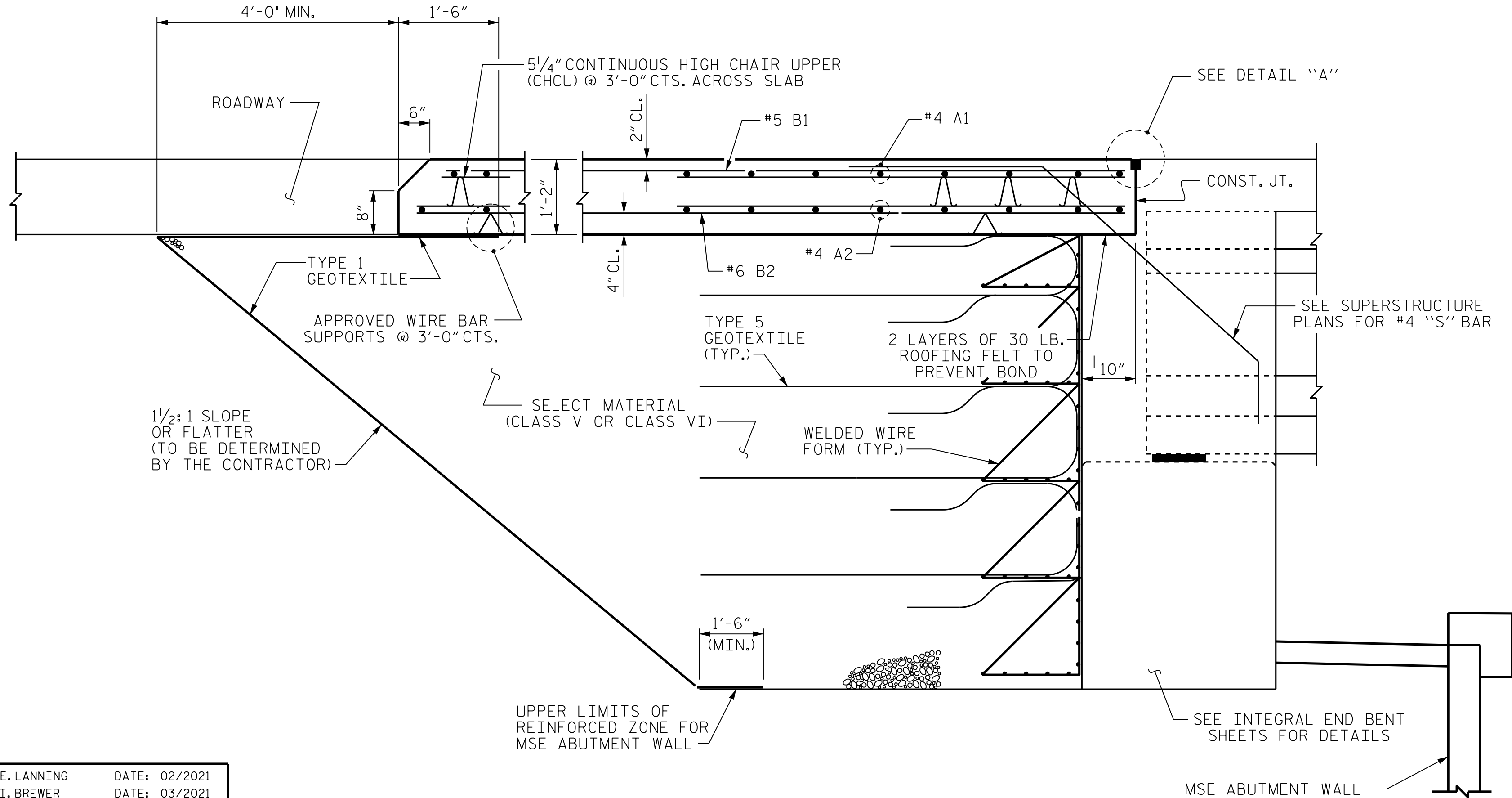
SELECT MATERIAL BACKFILL (CLASS V OR CLASS VI) SHALL BE IN ACCORDANCE WITH STANDARD SPECIFICATIONS SECTION 1016.

SELECT MATERIAL BACKFILL IS TO BE CONTINUOUS ALONG FILL FACE OF BACKWALL FROM OUTSIDE EDGE TO OUTSIDE EDGE OF APPROACH SLAB.

THE JOINT OPENING AT THE APPROACH SLAB/DECK INTERFACE SHALL BE SAWED NO MORE THAN 12 HOURS AFTER THE APPROACH SLAB IS CAST. THE JOINT SHALL BE CLEANED OF ALL DEBRIS BEFORE THE SEALANT IS APPLIED. THE JOINT SEALER MATERIAL SHALL CONFORM TO THE REQUIREMENTS OF SECTION 1028-3 OF THE STANDARD SPECIFICATIONS.



PLAN AT END BENT 1      PLAN AT END BENT 2  
DIMENSIONS SHOWN ARE TYPICAL FOR BOTH APPROACH SLABS

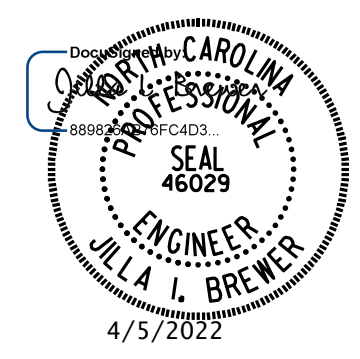


SECTION THRU SLAB  
(SPECIAL BRIDGE APPROACH FILL)

PROJECT NO. I-5987B  
ROBESON COUNTY  
STATION: 29+70.72 -Y7-

SHEET 1 OF 2

STATE OF NORTH CAROLINA  
DEPARTMENT OF TRANSPORTATION  
RALEIGH  
STANDARD  
BRIDGE APPROACH SLAB  
FOR INTEGRAL ABUTMENT  
WITH FLEXIBLE PAVEMENT



**DOCUMENT NOT CONSIDERED FINAL  
UNLESS ALL SIGNATURES COMPLETED**

MI ENGINEERING  
1011 SCHAUB DRIVE, SUITE 100  
RALEIGH, NC 27606  
(919) 851-6606  
FIRM PE NUMBER: P-0671

REVISIONS						SHEET NO.	
NO.	BY:	DATE:	NO.	BY:	DATE:	S10-32	
1			3			TOTAL SHEETS 33	
2			4				

4/5/2022 1:09:10 PM User: blanning  
 Filename: N:\NC Bridges\W20003 I-5987A&B I-5987B\Structures\410-063-I5987B-SMU-AS1-770167.dgn

ASSEMBLED BY: B.E. LANNING	DATE: 02/2021
CHECKED BY: J.I. BREWER	DATE: 03/2021
DESIGN ENGINEER OF RECORD: J.I. BREWER	DATE: 12/2021
DRAWN BY: TLA 10/05	REV. 6/13 MAA/GM
CHECKED BY: GM 5/06	REV. 12/17 MAA/THC
	REV. 06/19 BNB/THC