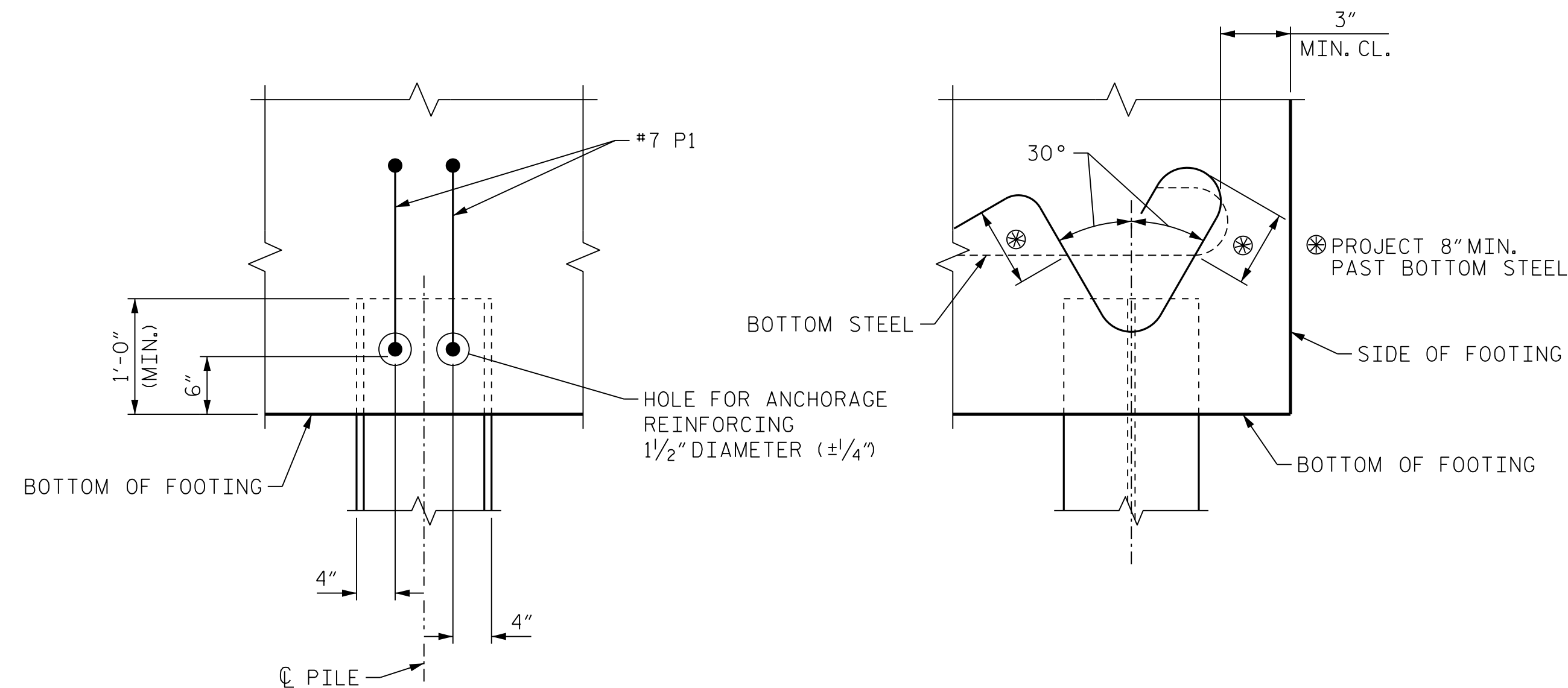
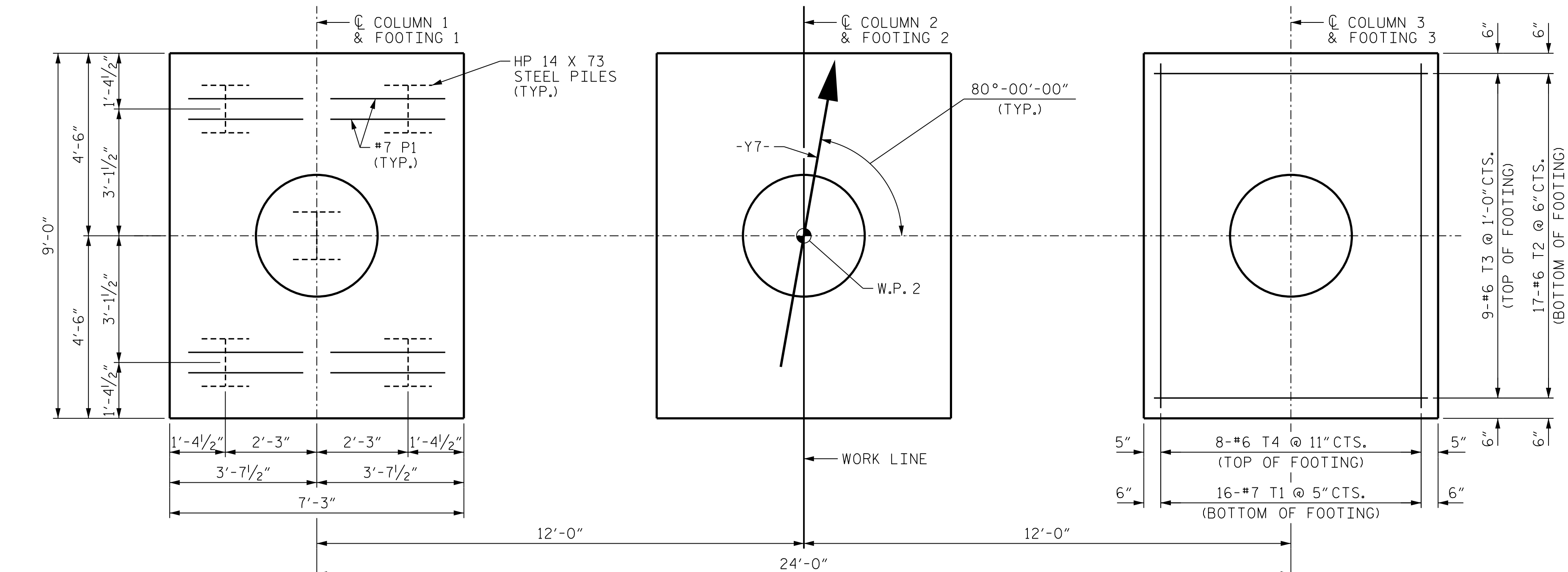


3/8/2022 10:38:15 AM User: blanning
 Filename: N:\NC Bridges\M20003 I-5987A&B I-95\I5987B\Structures\410_053_I5987B_SMU.BIC.770167.dgn



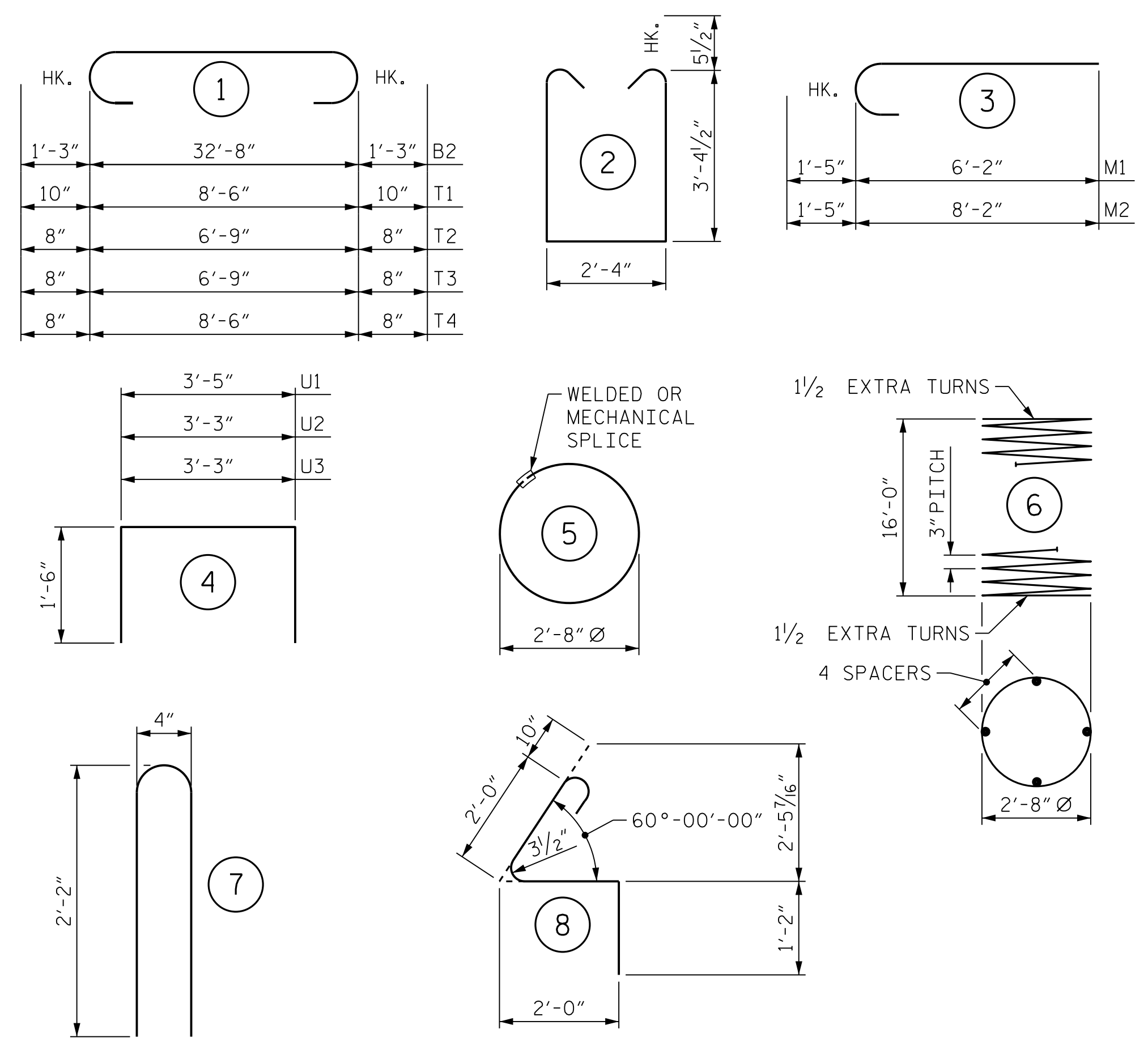
STEEL H-PILE ANCHORAGE DETAIL



PLAN OF COLUMNS AND FOOTINGS

(DIMENSIONS AND REINFORCING STEEL ARE TYPICAL FOR EACH COLUMN AND FOOTING, UNLESS OTHERWISE NOTED)

BAR TYPES



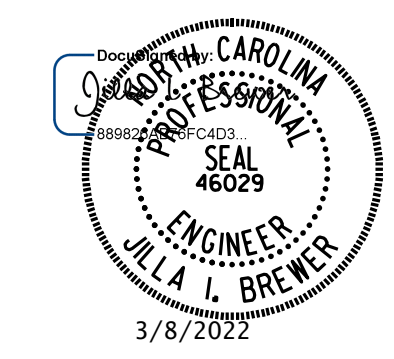
ALL BAR DIMENSIONS ARE OUT TO OUT.

BILL OF MATERIAL

BENT 1					
BAR NO.	NO.	SIZE	TYPE	LENGTH	WEIGHT
B1	6	#9	STR	32'-8"	666
B2	6	#9	1	35'-2"	717
B3	8	#5	STR	32'-8"	273
M1	24	#10	3	7'-7"	783
M2	24	#10	3	9'-7"	990
P1	24	#7	8	6'-0"	294
S1	80	#5	2	10'-0"	834
S2	33	#4	5	8'-5"	186
U1	32	#4	4	6'-5"	137
U2	8	#4	4	6'-3"	33
U3	8	#4	4	6'-3"	33
U4	32	#4	7	4'-8"	100
T1	48	#7	1	10'-2"	997
T2	51	#6	1	8'-1"	619
T3	27	#6	1	8'-1"	328
T4	24	#6	1	9'-10"	354
V1	24	#10	STR	14'-9"	1,523
V2	24	#10	STR	12'-9"	1,317
REINFORCING STEEL					10,184 LBS.
SPIRAL COLUMN REINFORCING STEEL					1,723 LBS.
* THE SP-1 SPIRAL REINFORCING STEEL SHALL BE W31 OR D-31 COLD DRAWN WIRE OR #5 PLAIN OR DEFORMED BAR.					
CLASS A CONCRETE BREAKDOWN					
POUR #1 (FOOTING)					25.4 C.Y.
POUR #2 (COLUMNS)					12.4 C.Y.
POUR #3 (CAP)					17.6 C.Y.
TOTAL					55.4 C.Y.

PROJECT NO. I-5987B
ROBESON COUNTY
 STATION: 29+70.72 -Y7-

SHEET 3 OF 3



DOCUMENT NOT CONSIDERED FINAL UNLESS ALL SIGNATURES COMPLETED

MI ENGINEERING
 1011 SCHAUB DRIVE, SUITE 100
 RALEIGH, NC 27606
 (919) 851-6606
 FIRM PE NUMBER: P-0671

STATE OF NORTH CAROLINA
 DEPARTMENT OF TRANSPORTATION
 RALEIGH

SUBSTRUCTURE
BENT 1
DETAILS AND
BILL OF MATERIAL

REVISIONS					
NO.	BY:	DATE:	NO.	BY:	DATE:
1			3		
2			4		

SHEET NO. **S10-27**
 TOTAL SHEETS **33**

DRAWN BY: B.E. LANNING DATE: 07/2021
 CHECKED BY: J.I. BREWER DATE: 07/2021
 DESIGN ENGINEER OF RECORD: J.I. BREWER DATE: 03/2022