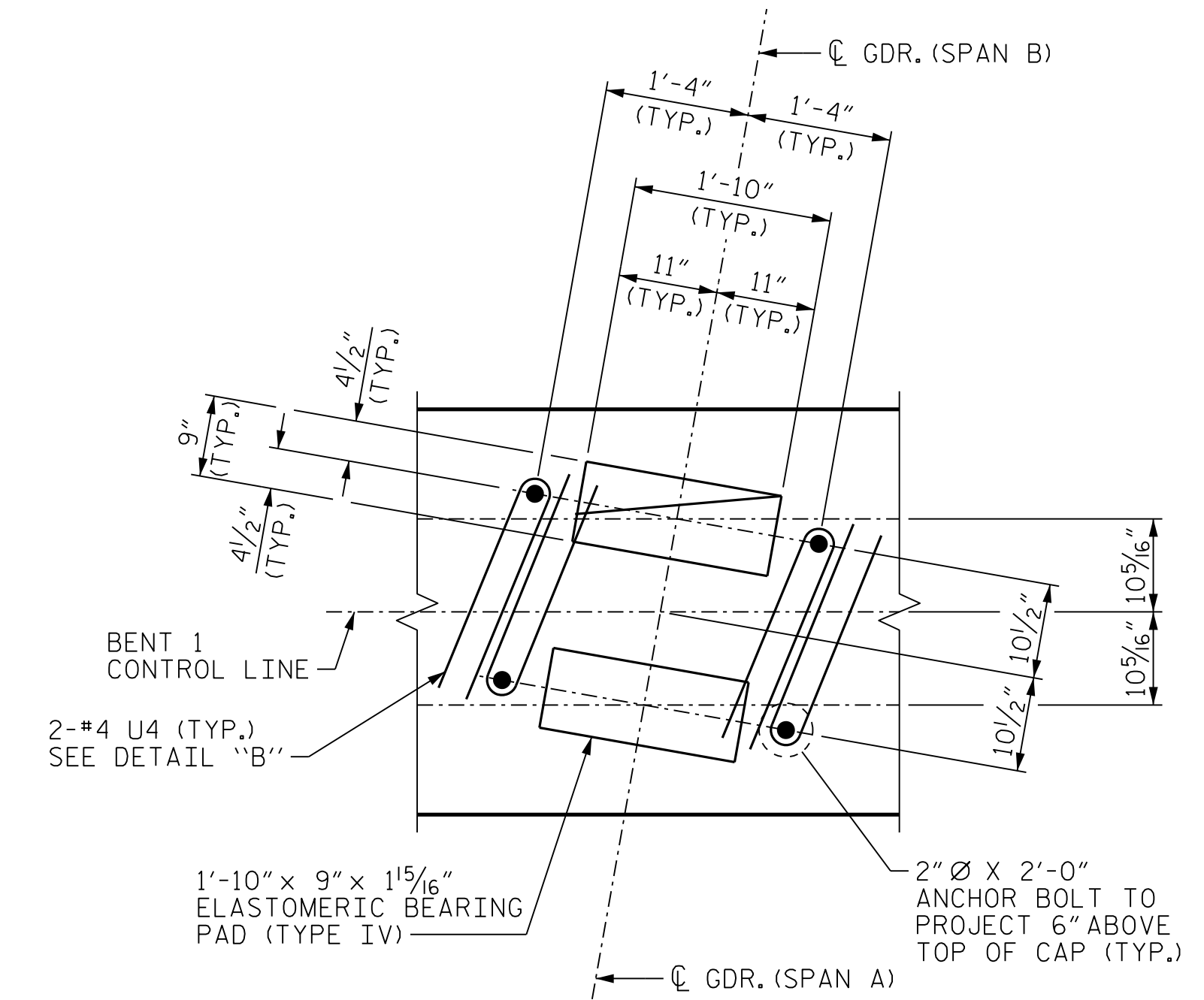
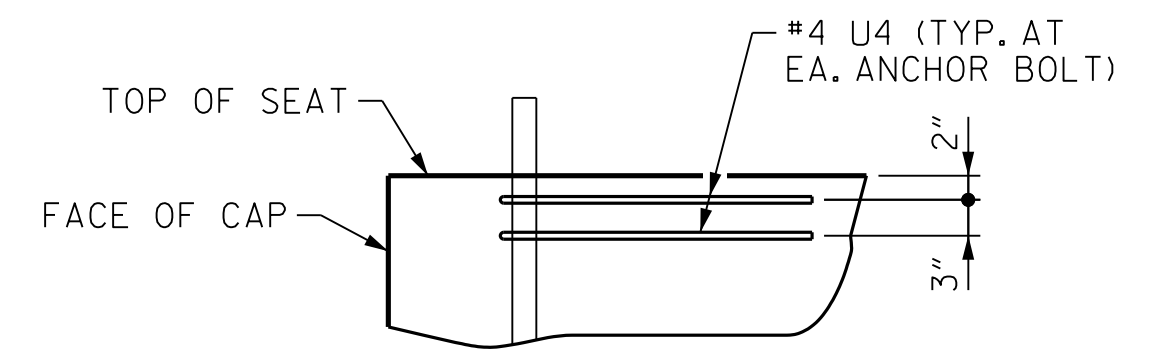


**NOTES:**  
 STIRRUPS AND "U" BARS IN CAP MAY BE SHIFTED AS NECESSARY TO CLEAR ANCHOR BOLTS.  
 FOR SECTION A-A, VIEW B-B AND END ELEVATION SEE SHEET 2 OF 3.  
 FOR FOOTING DETAILS, SEE SHEET 3 OF 3.  
 ⊗ INVERT ALTERNATE PAIRS OF STIRRUPS.  
 FOR PILE SPLICE DETAILS, SEE END BENT 1 SHEET 3 OF 3.  
 SPLICES IN SPIRAL REINFORCEMENT WITHIN 3'-0" FROM TOP OR BOTTOM OF COLUMN MUST BE FULLY WELDED OR MECHANICAL SPLICES. NO LAP SPLICES PERMITTED.



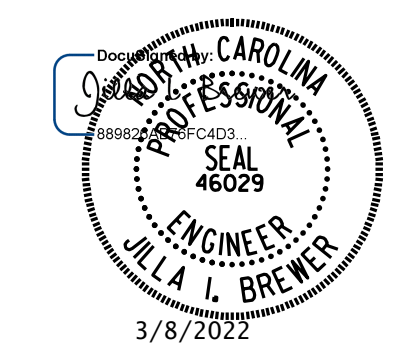
**DETAIL "A"**  
 (TYP. EA. BEARING)



**DETAIL "B"**

PROJECT NO. I-5987B  
ROBESON COUNTY  
 STATION: 29+70.72 -Y7-

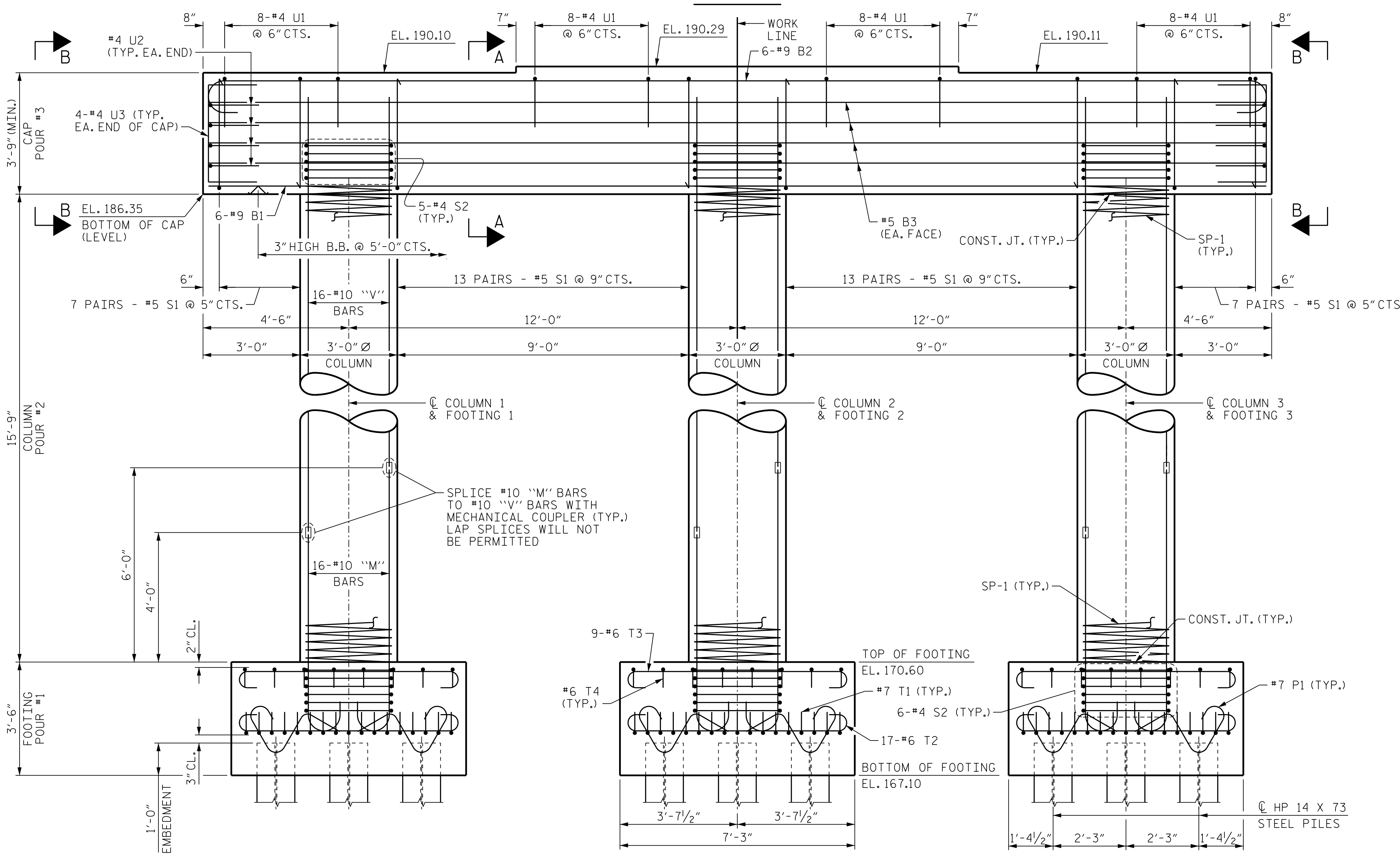
SHEET 1 OF 3



**DOCUMENT NOT CONSIDERED FINAL  
 UNLESS ALL SIGNATURES COMPLETED**

MI ENGINEERING  
 1011 SCHAUB DRIVE, SUITE 100  
 RALEIGH, NC 27606  
 (919) 851-6606  
 FIRM PE NUMBER: P-0671

STATE OF NORTH CAROLINA DEPARTMENT OF TRANSPORTATION RALEIGH					
SUBSTRUCTURE BENT 1 PLAN AND ELEVATION					
REVISIONS					
NO.	BY:	DATE:	NO.	BY:	DATE:
1			3		
2			4		
SHEET NO. <b>S10-25</b>					TOTAL SHEETS <b>33</b>



**ELEVATION**

DIMENSIONS & REINFORCING STEEL ARE TYPICAL FOR EACH COLUMN & FOOTINGS UNLESS OTHERWISE NOTED

3/8/2022 10:38:12 AM User: blanning  
 File: N:\C:\Bridges\M20003 I-5987A&B I-95\I5987B\Structures\410\_049\_I5987B\_SMU.BIA.770167.dgn

DRAWN BY: B.E. LANNING DATE: 07/2021  
 CHECKED BY: J.I. BREWER DATE: 07/2021  
 DESIGN ENGINEER OF RECORD: J.I. BREWER DATE: 03/2022