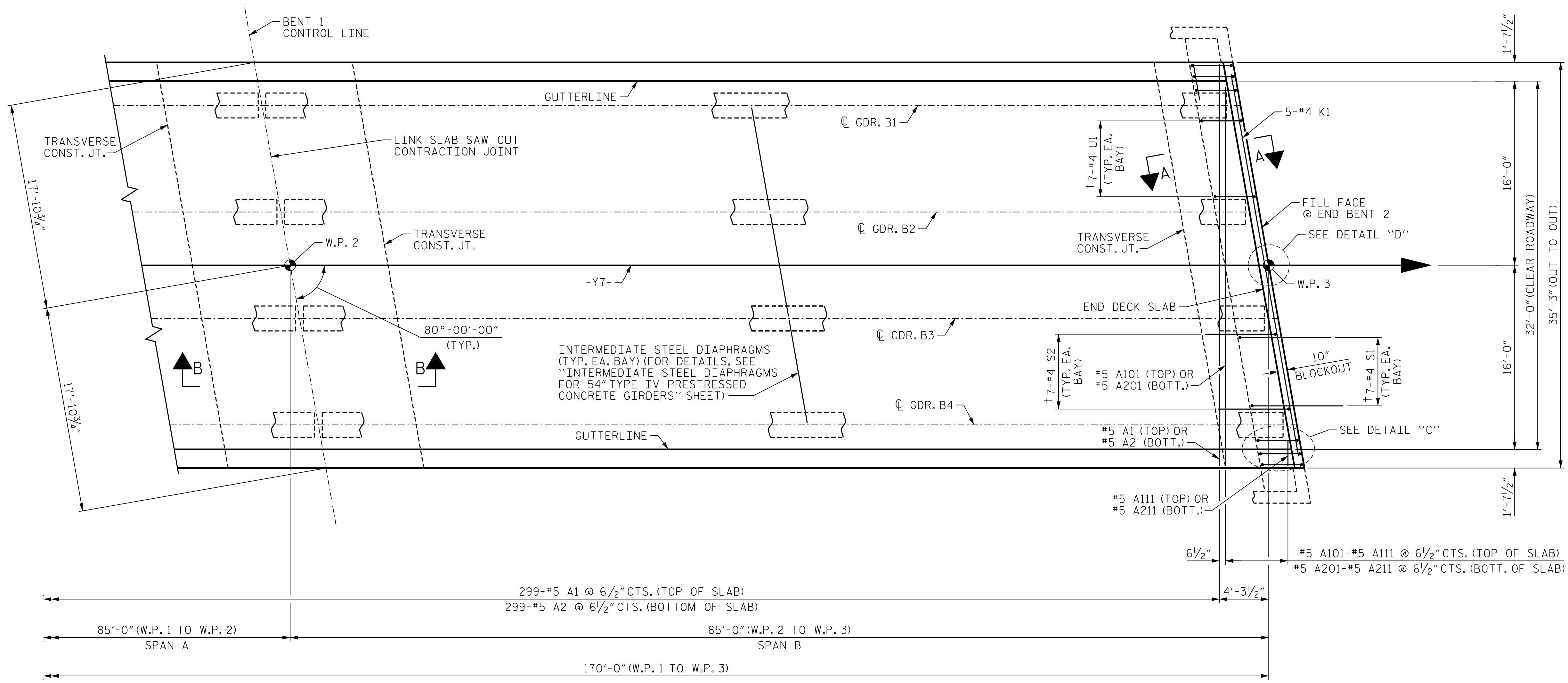
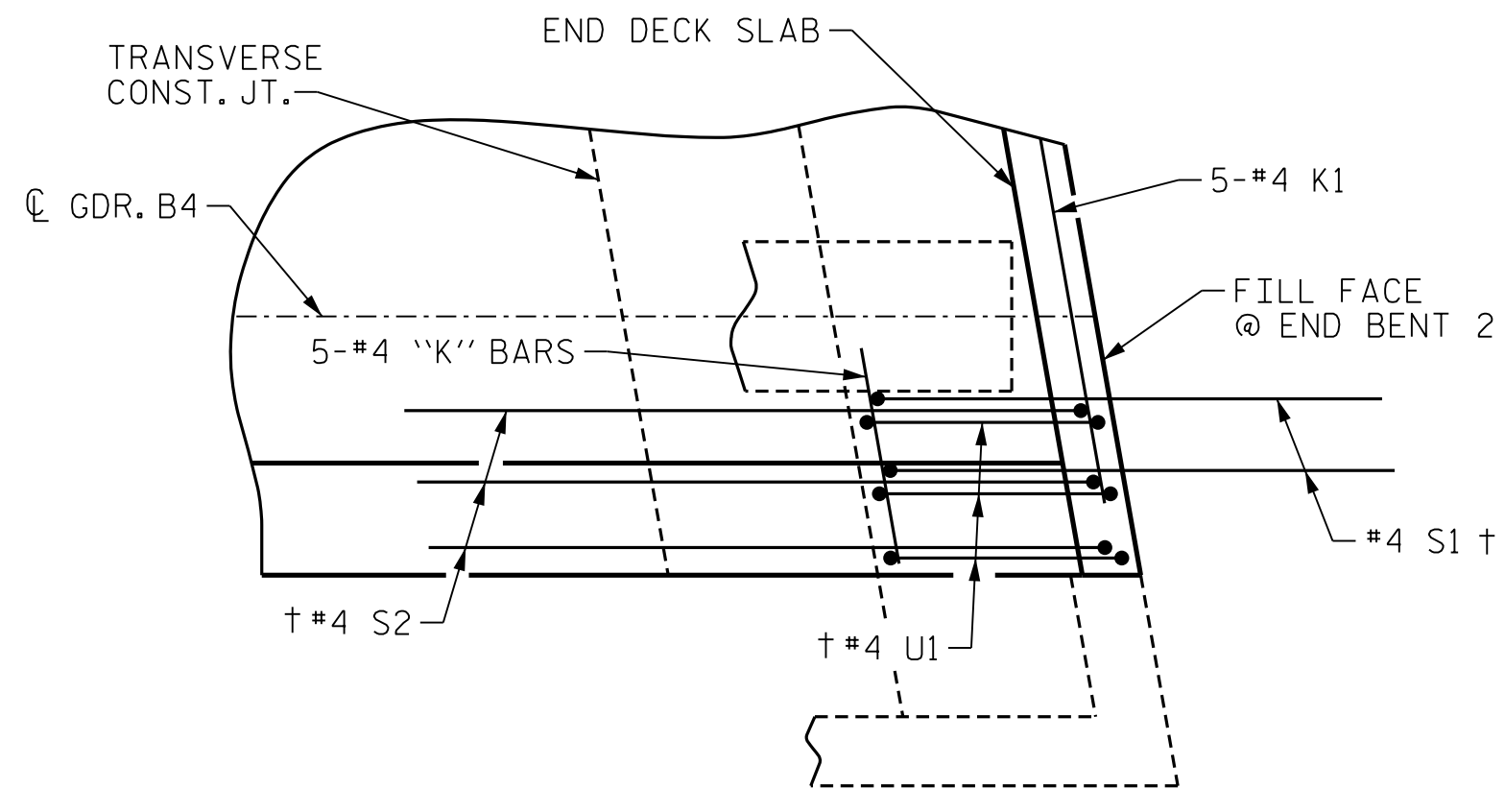


3/17/2022 9:51:11 AM User: blanning File: N:\NC Bridges\202003 I-5987A&B I-5987B\Structures\410.019.15987B.SMJ.PS2.770167.dgn

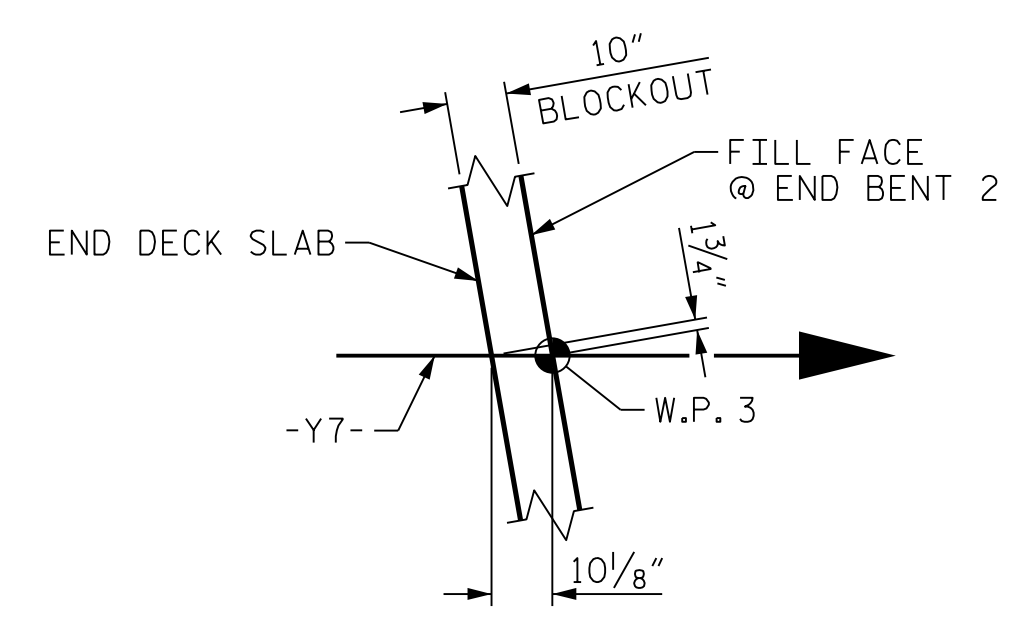


**PLAN OF SPAN B**

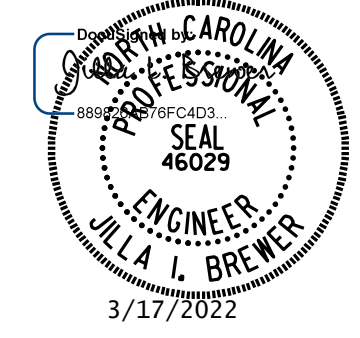
- NOTES:**
- FOR REINFORCING STEEL IN CONCRETE BARRIER RAIL, SEE "CONCRETE BARRIER RAIL DETAILS" SHEETS.
  - FOR SECTION VIEWS, SEE "SUPERSTRUCTURE TYPICAL SECTION AND DETAILS" SHEETS.
  - FOR LOCATION OF INTERMEDIATE STEEL DIAPHRAGMS, SEE "SUPERSTRUCTURE FRAMING PLAN" SHEET.
  - FOR TOP AND BOTTOM "B" BARS NOT SHOWN, SEE SHEET 3 OF 3.
  - † #4 S1, #4 S2 & #4 U1 TO MATCH WITH #4 "V" BARS IN INTEGRAL END BENT CAP.
  - FOR TRANSVERSE CONSTRUCTION JOINT DETAIL, SEE "SUPERSTRUCTURE TYPICAL SECTION AND DETAILS" SHEET 3 OF 3.
  - FOR LOCATION OF TRANSVERSE CONSTRUCTION JOINTS, SEE POURING SEQUENCE ON "SUPERSTRUCTURE BILL OF MATERIAL" SHEETS.
  - FOR LOCATION OF LINK SLAB SAW CUT CONTRACTION JOINT, SEE SECTION B-B ON "SUPERSTRUCTURE TYPICAL SECTION, SHEET 3 OF 3".
  - LINK SLAB SAW CUT CONTRACTION JOINT EXTENDS TO THE EDGE OF DECK ON BOTH SIDES.



**DETAIL "C"**  
(RIGHT SIDE SHOWN, LEFT SIDE SIMILAR)



**DETAIL "D"**



PROJECT NO. I-5987B  
ROBESON COUNTY  
 STATION: 29+70.72 -Y7-

SHEET 2 OF 3

STATE OF NORTH CAROLINA  
 DEPARTMENT OF TRANSPORTATION  
 RALEIGH  
 SUPERSTRUCTURE  
 PLAN OF SPANS  
 SPAN B

**DOCUMENT NOT CONSIDERED FINAL UNLESS ALL SIGNATURES COMPLETED**

DRAWN BY : B.E. LANNING	DATE : 03/2021
CHECKED BY : J.I. BREWER	DATE : 03/2021
DESIGN ENGINEER OF RECORD : J.I. BREWER	DATE : 03/2022

**MI ENGINEERING**  
 1011 SCHAUB DRIVE, SUITE 100  
 RALEIGH, NC 27606  
 (919) 851-6606  
 FIRM PE NUMBER : P-0671

REVISIONS						SHEET NO.
NO.	BY:	DATE:	NO.	BY:	DATE:	TOTAL SHEETS
1			3			33
2			4			