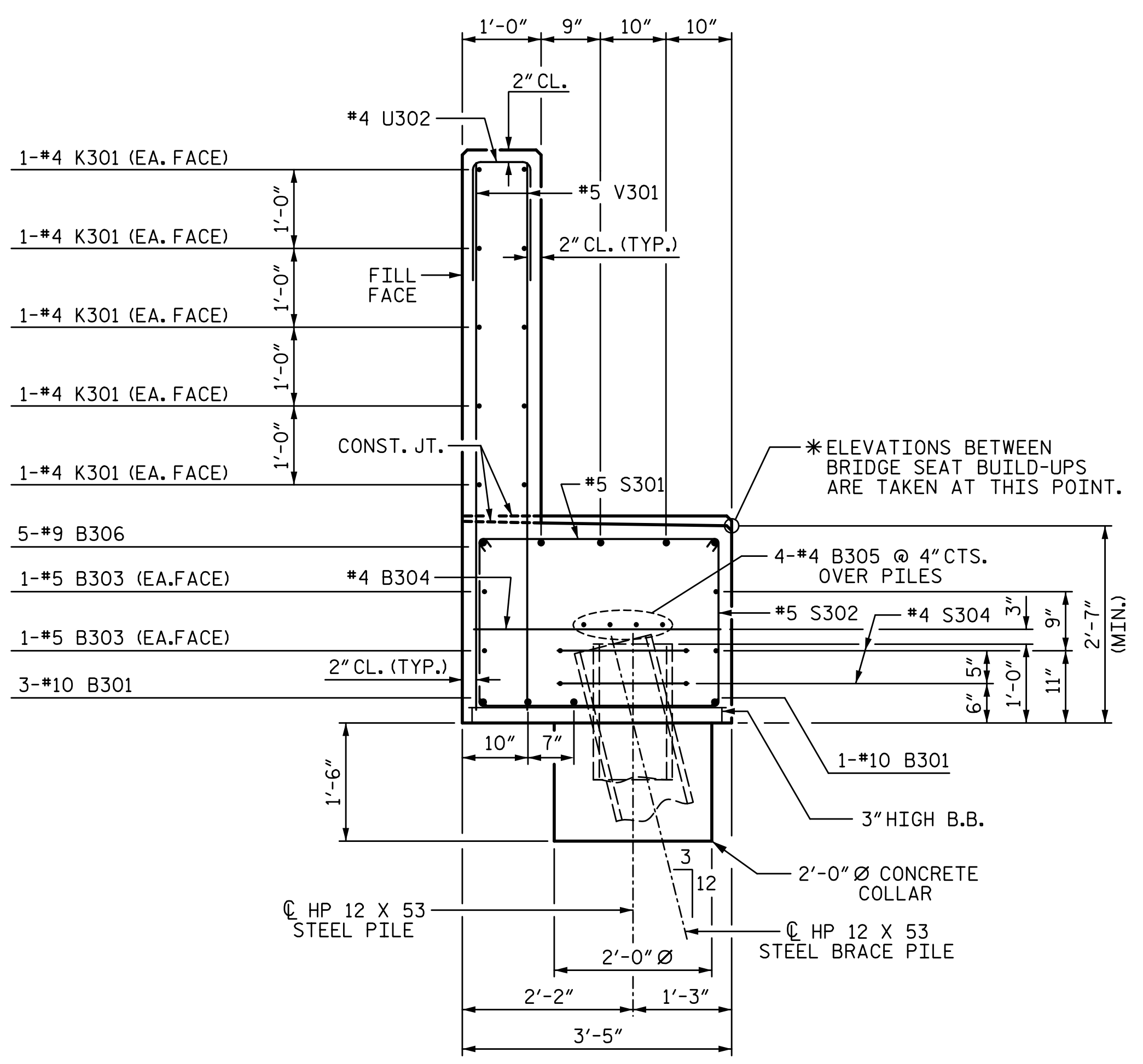
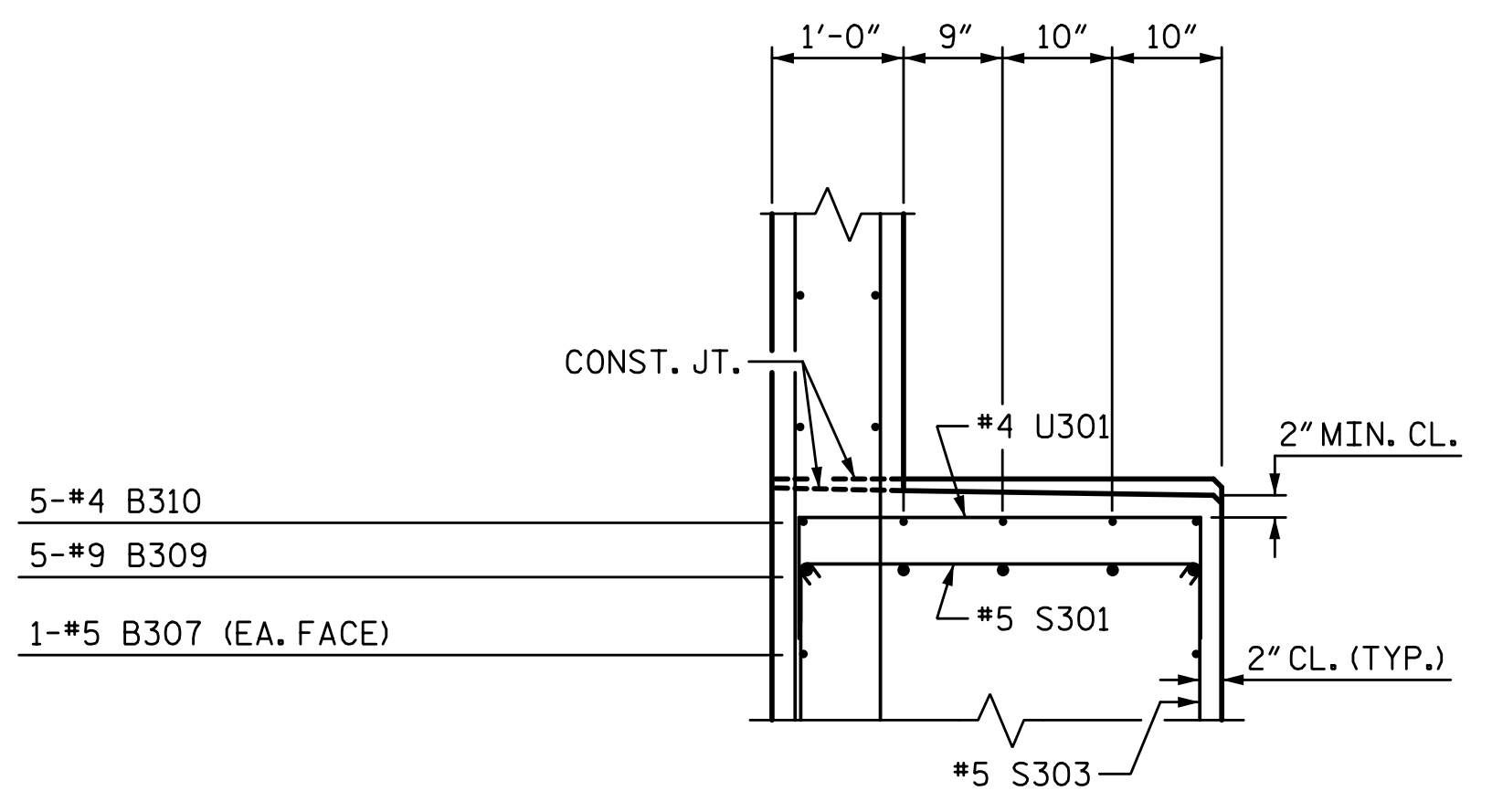


3/18/2022 11:06:59 AM G:\Projects\2020\Division 6 (Mott Mac - NV5)\I-5987B\Structures\Site 9 (L over Little Marsh Swamp)\Drawings\Final\I5987B_SMU_E2_770164.dgn



SECTION A3-A3



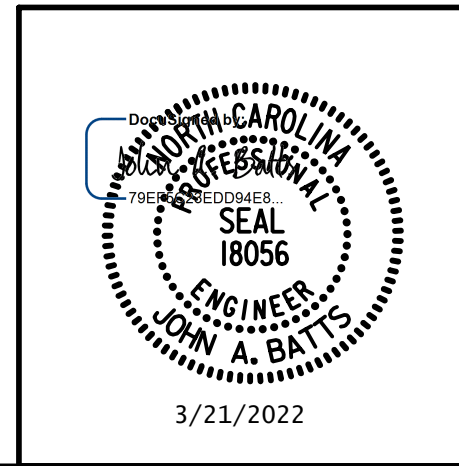
PART SECTION B3-B3

BAR TYPES

ALL BAR DIMENSIONS ARE OUT TO OUT

BILL OF MATERIAL					
END BENT 2 - STAGE III					
BAR	NO.	SIZE	TYPE	LENGTH	WEIGHT
B301	4	#10	1	43'-0"	740
B302	4	#10	STR	41'-7"	716
B303	8	#5	STR	40'-9"	340
B304	22	#4	STR	3'-1"	45
B305	12	#4	STR	27'-10"	223
B306	5	#9	1	36'-0"	612
B307	2	#5	STR	49'-3"	103
B308	15	#4	STR	10'-11"	109
B309	5	#9	STR	51'-8"	878
B310	10	#4	STR	4'-4"	29
H301	12	#5	2	10'-9"	135
H302	12	#5	2	10'-10"	136
K301	30	#4	STR	27'-10"	558
K302	4	#4	STR	2'-7"	7
S301	71	#5	3	4'-0"	296
S302	24	#5	4	8'-5"	211
S303	47	#5	4	9'-8"	474
S304	26	#4	5	6'-6"	113
U301	32	#4	6	6'-1"	130
U302	76	#4	6	3'-8"	186
V301	152	#5	STR	6'-9"	1070
V302	30	#5	STR	8'-1"	253
TOTAL REINFORCING STEEL					7364 LB
CLASS A CONCRETE BREAKDOWN					
POUR 1					
(CAP, COLLARS & LOWER WING)					35.1 CY
POUR 2					
(BACKWALL & UPPER WINGS)					15.9 CY
TOTAL CLASS A CONCRETE					51.0 CY

DRAWN BY: S.D. COOPER DATE: 3-22
 CHECKED BY: J.A. BATTS DATE: 3-22
 DESIGN ENGINEER OF RECORD: J.A. BATTS DATE: 3-22



PROJECT NO. I-5987B
ROBESON COUNTY
 STATION: 803+15.00 -L-
 SHEET 8 OF 8

STATE OF NORTH CAROLINA DEPARTMENT OF TRANSPORTATION RALEIGH SUBSTRUCTURE					
END BENT 2					
STAGE III					
REVISIONS					
NO.	BY:	DATE:	NO.	BY:	DATE:
1			3		
2			4		
					SHEET NO. S9-65
					TOTAL SHEETS 69

DOCUMENT NOT CONSIDERED FINAL
UNLESS ALL SIGNATURES COMPLETED