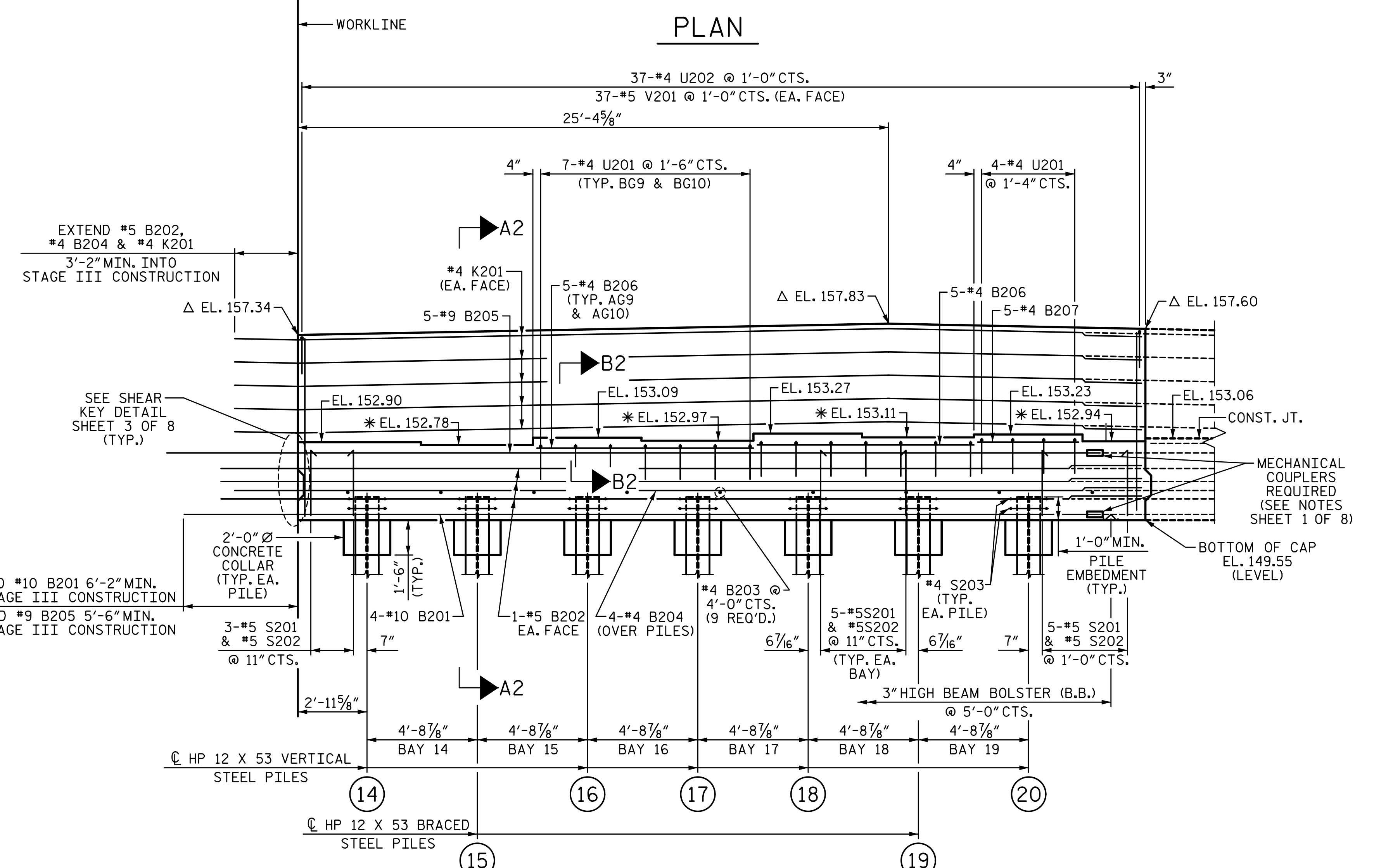
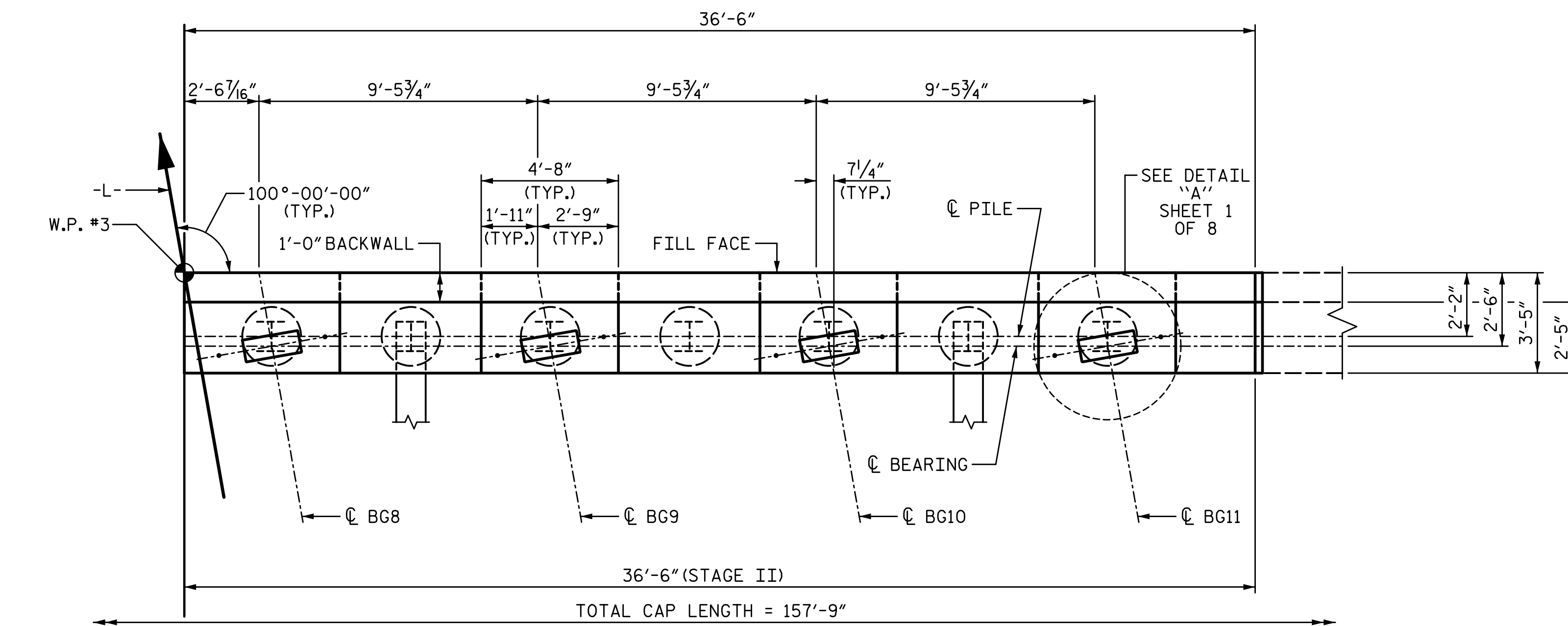


3/18/2022 11:06:57 AM G:\Projects\2020\Division 6 (Mott Mac - NV5)\I-5987B\Structures\Site 9 (L over Little Marsh Swamp)\Drawings\Final\I5987B_SMU_E2_770164.dgn



NOTES:

FOR ADDITIONAL NOTES, SEE SHEET 1 OF 8.

FOR SECTION A2-A2 AND PART SECTION B2-B2, SEE SHEET 5 OF 8.

* FOR LOCATION OF ELEVATIONS BETWEEN BRIDGE SEAT BUILD-UPS, SEE SECTION A2-A2 SHEET 5 OF 8.

Δ BACKWALL ELEVATIONS ARE GIVEN AT FILL FACE.

PROJECT NO. I-5987B

ROBESON COUNTY

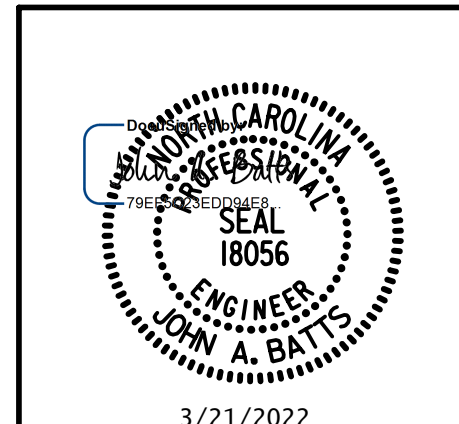
STATION: 803+15.00 -L-

SHEET 4 OF 8

STATE OF NORTH CAROLINA
DEPARTMENT OF TRANSPORTATION
RALEIGH
SUBSTRUCTURE

END BENT 2

STAGE II



DRAWN BY: S.D. COOPER DATE: 3-22

CHECKED BY: J.A. BATTIS DATE: 3-22

DESIGN ENGINEER OF RECORD: J.A. BATTIS DATE: 3-22

⊕ INDICATES PILE NUMBER

REVISIONS						SHEET NO.	
NO.	BY:	DATE:	NO.	BY:	DATE:	S9-61	
1			3			TOTAL SHEETS	
2			4			69	

DOCUMENT NOT CONSIDERED FINAL UNLESS ALL SIGNATURES COMPLETED