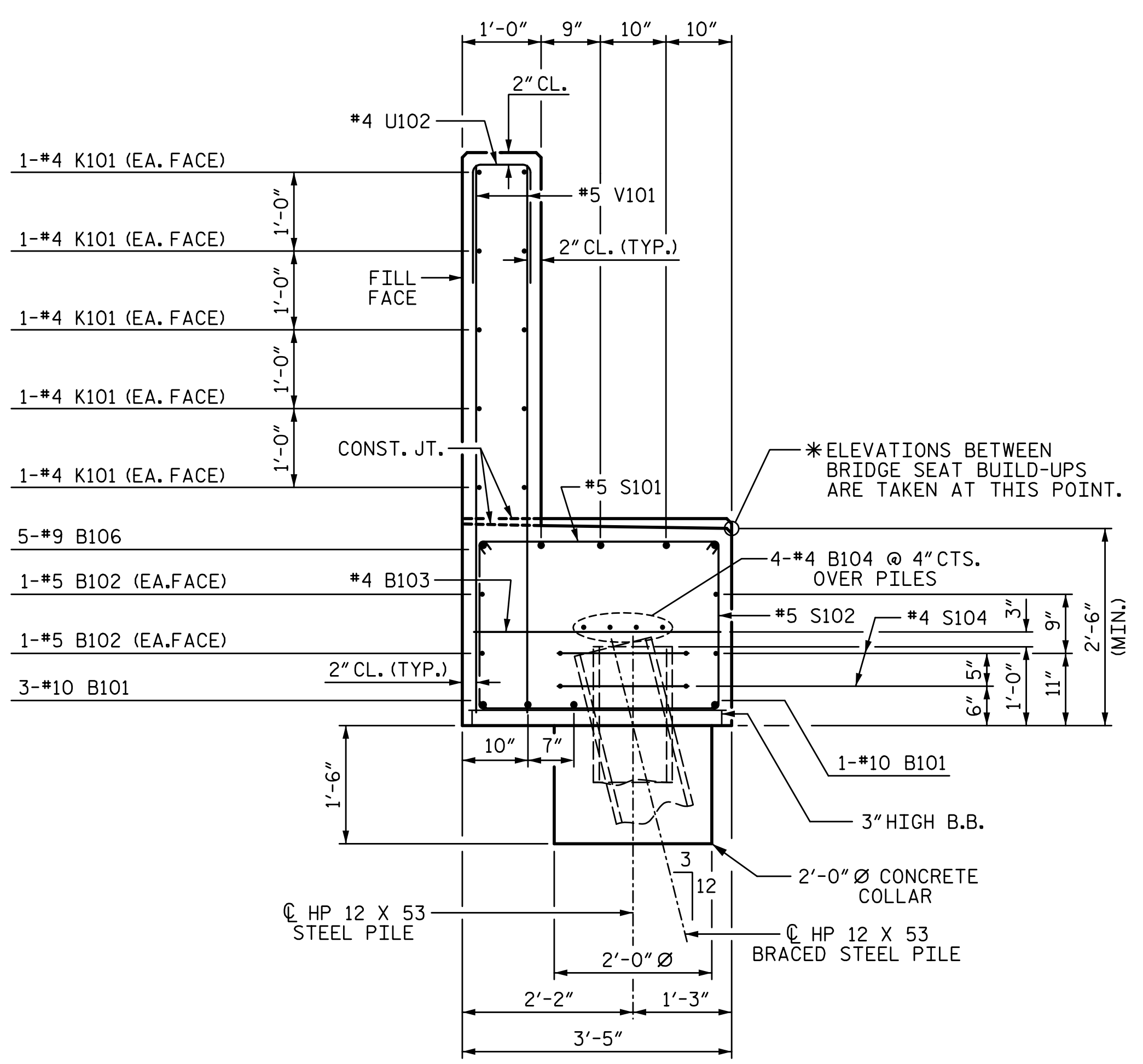
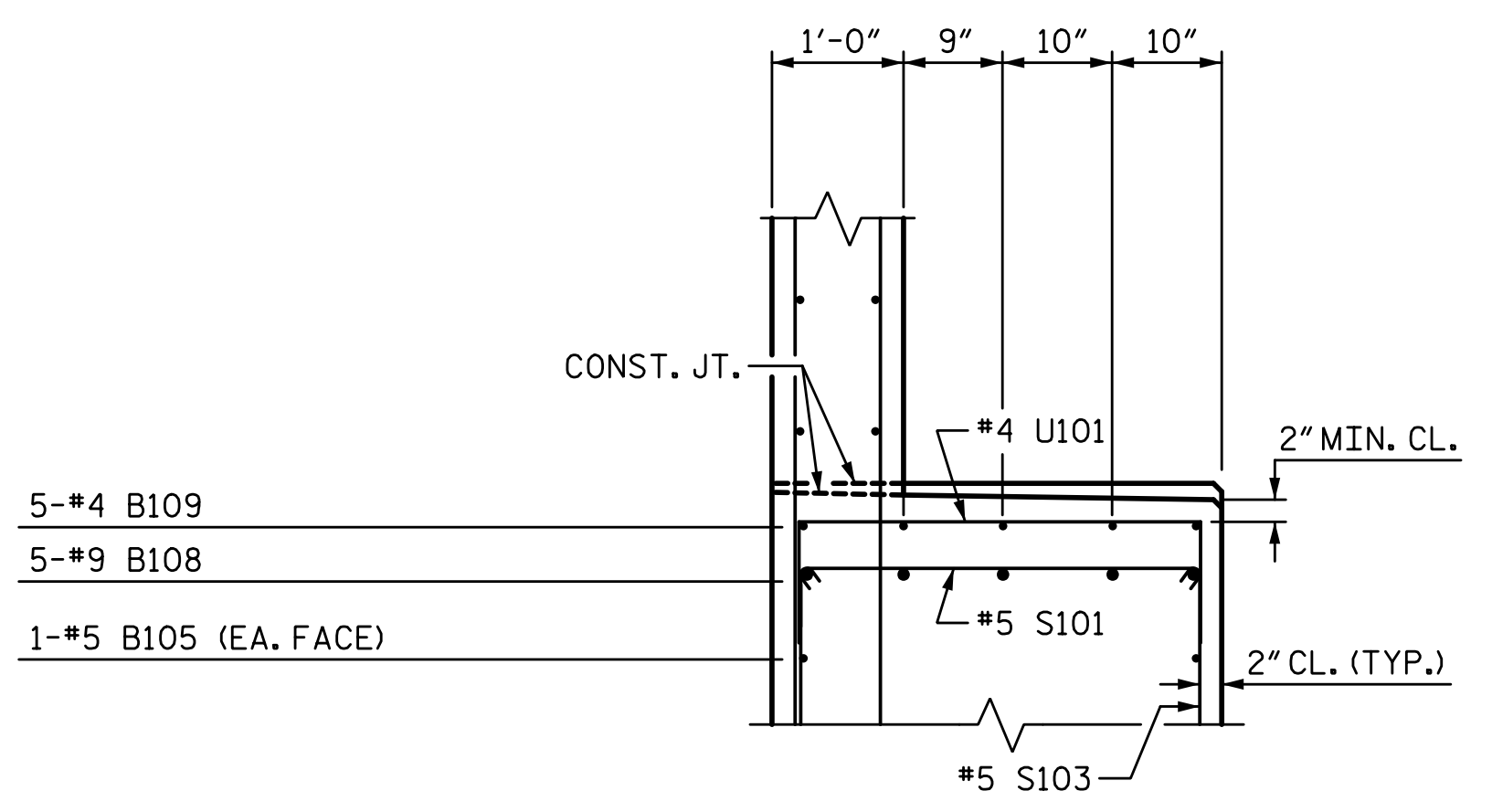


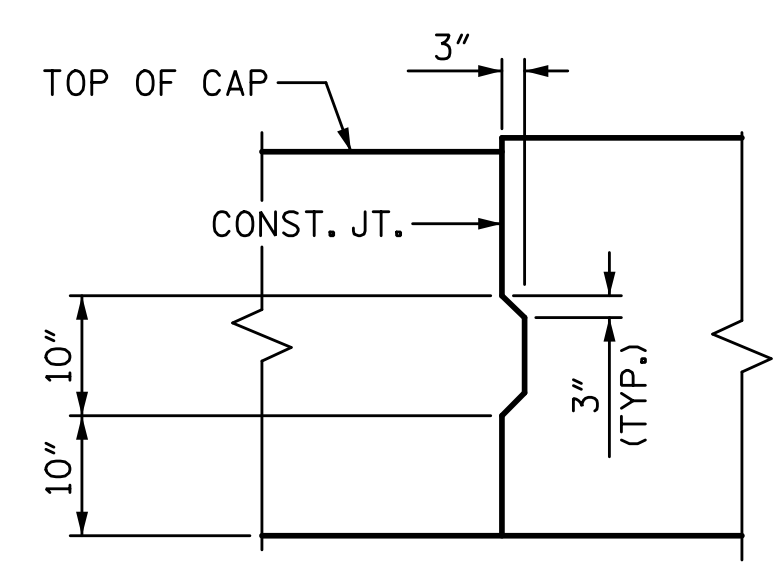
3/18/2022 11:06:56 AM G:\Projects\2020\Division 6 (Mott Mac - NV5)\I-5987B\Structures\Site 9 (L over Little Marsh Swamp)\Drawings\Final\I5987B_SMU_E2_770164.dgn



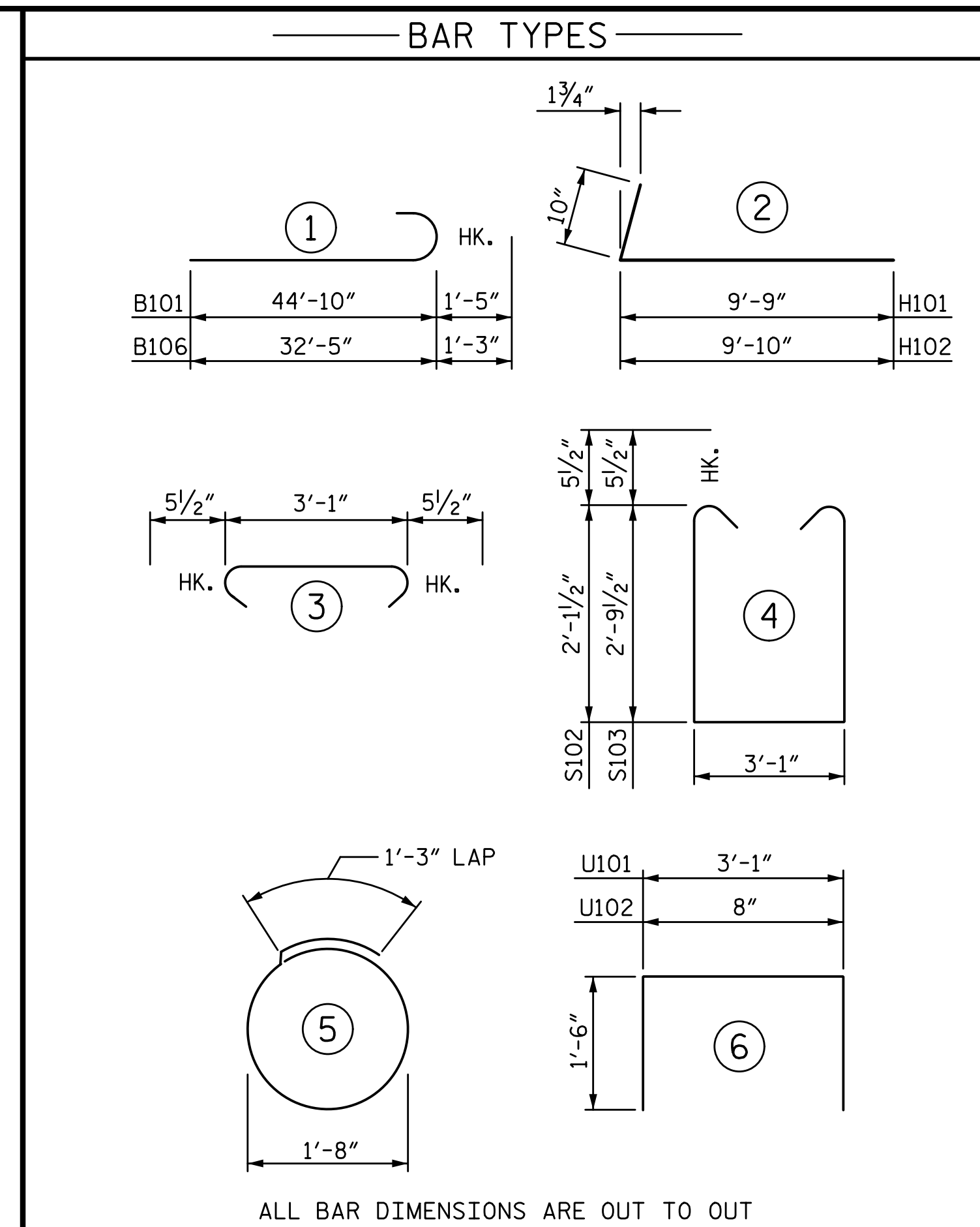
SECTION A1-A1



PART SECTION B1-B1



SHEAR KEY DETAIL
REINFORCING STEEL IN CAP NOT SHOWN.
"B" BARS SHALL BE CONTINUOUS THROUGH JOINT.



BILL OF MATERIAL					
END BENT 2 - STAGE I					
BAR	NO.	SIZE	TYPE	LENGTH	WEIGHT
B101	4	#10		46'-3"	796
B102	4	#5	STR	46'-1"	192
B103	13	#4	STR	3'-1"	27
B104	8	#4	STR	24'-0"	128
B105	2	#5	STR	18'-11"	39
B106	5	#9		33'-8"	572
B107	5	#4	STR	10'-11"	36
B108	5	#9	STR	18'-3"	310
B109	5	#4	STR	5'-0"	17
H101	12	#5		10'-7"	132
H102	12	#5		10'-8"	134
K101	20	#4	STR	24'-0"	321
K102	4	#4	STR	2'-8"	7
S101	39	#5		4'-0"	163
S102	24	#5		8'-3"	207
S103	15	#5		9'-7"	150
S104	14	#4		6'-6"	61
U101	12	#4		6'-1"	49
U102	40	#4		3'-8"	98
V101	80	#5	STR	6'-8"	556
V102	30	#5	STR	8'-0"	250
TOTAL REINFORCING STEEL					4245 LB
CLASS A CONCRETE BREAKDOWN					
POUR 1 (CAP, COLLARS & LOWER WING)					18.1 CY
POUR 2 (BACKWALL & UPPER WING)					9.7 CY
TOTAL CLASS A CONCRETE					27.8 CY

ALL BAR DIMENSIONS ARE OUT TO OUT

PROJECT NO. I-5987B
ROBESON COUNTY
 STATION: 803+15.00 -L-

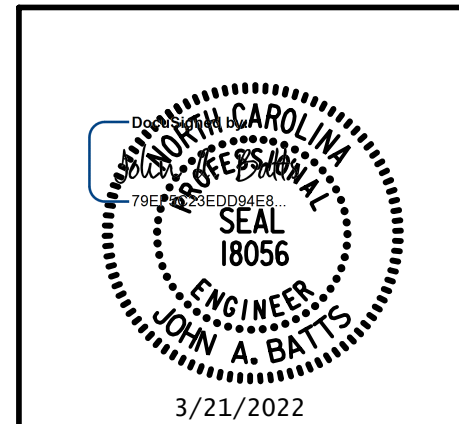
SHEET 3 OF 8

STATE OF NORTH CAROLINA
 DEPARTMENT OF TRANSPORTATION
 RALEIGH
 SUBSTRUCTURE

END BENT 2

STAGE I

REVISIONS						SHEET NO.
NO.	BY:	DATE:	NO.	BY:	DATE:	S9-60
1			3			TOTAL SHEETS
2			4			69



DRAWN BY: S.D. COOPER DATE: 3-22
 CHECKED BY: J.A. BATTS DATE: 3-22
 DESIGN ENGINEER OF RECORD: J.A. BATTS DATE: 3-22

**DOCUMENT NOT CONSIDERED FINAL
 UNLESS ALL SIGNATURES COMPLETED**