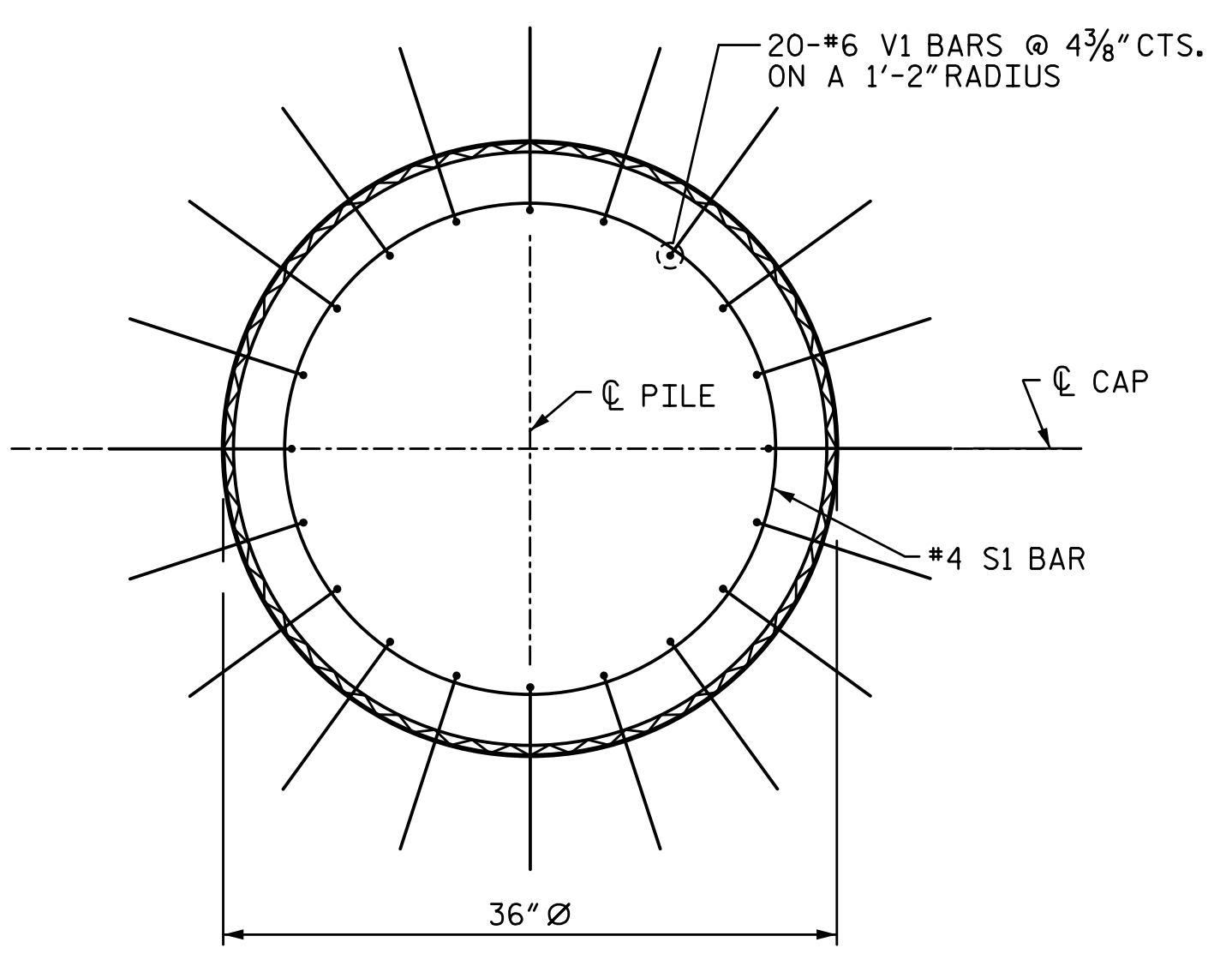
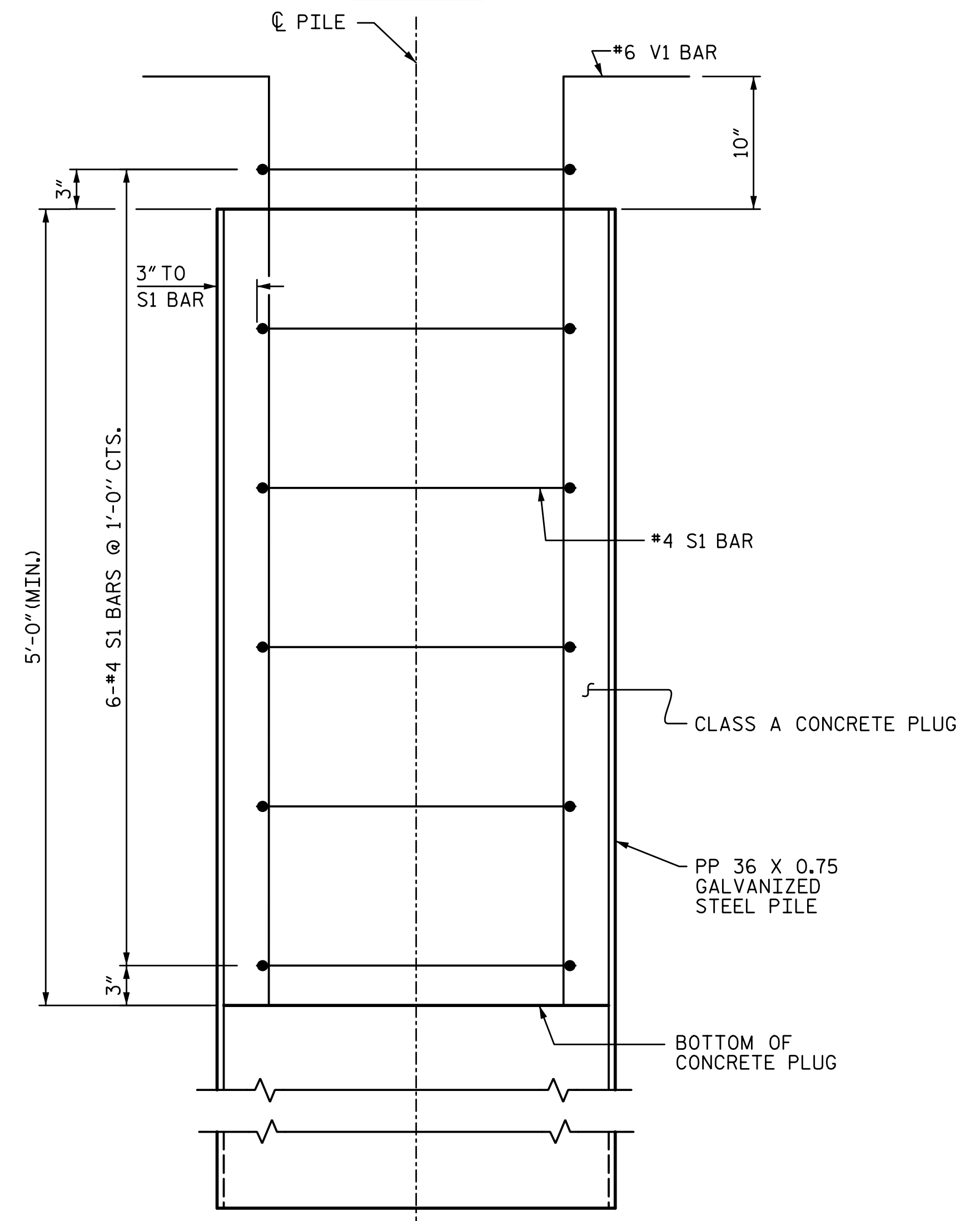


3/18/2022 11:06:47 AM G:\Projects\2020\Division 6 (Mott) Mac - NV5\I-5987B\Structures\Site 9 (L over Little Marsh Swamp)\Drawings\Final\I5987B_SMU_B1_770164.dgn



PLAN

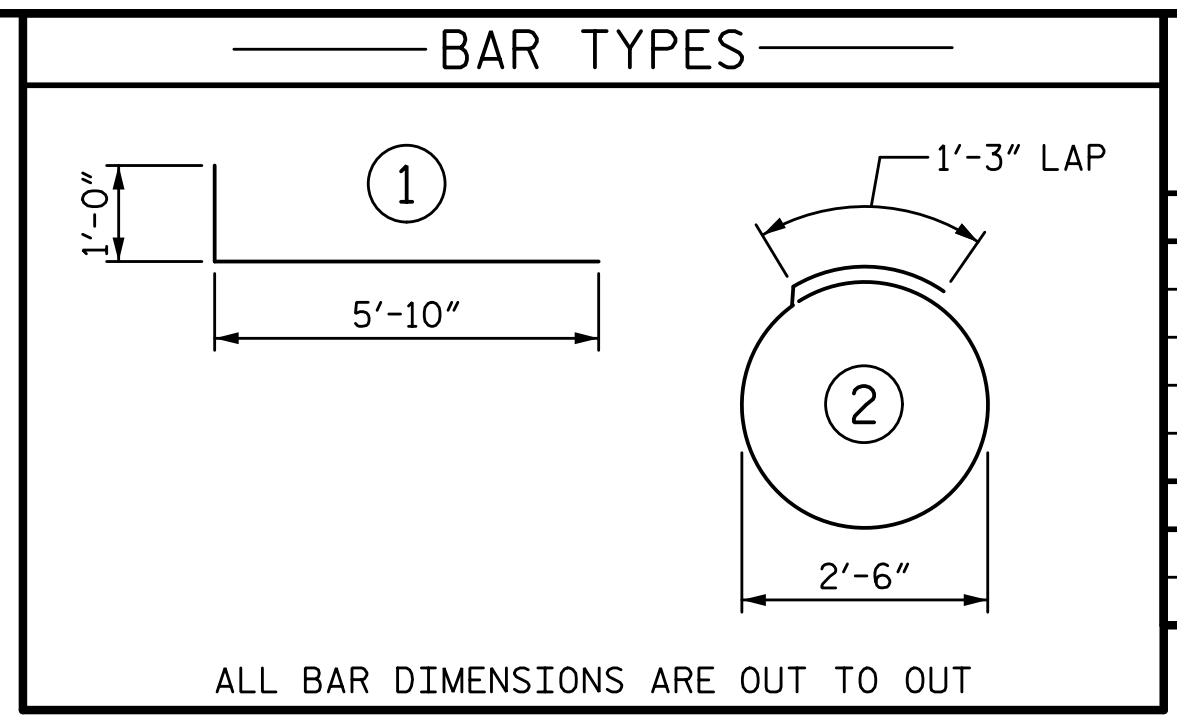


ELEVATION

PP 36 X 0.75 GALVANIZED STEEL PILE

OPEN END

DRAWN BY: T. BANKOVICH	DATE: 3-22
CHECKED BY: J.A. BATTS	DATE: 3-22
DESIGN ENGINEER OF RECORD: J.A. BATTS	DATE: 3-22

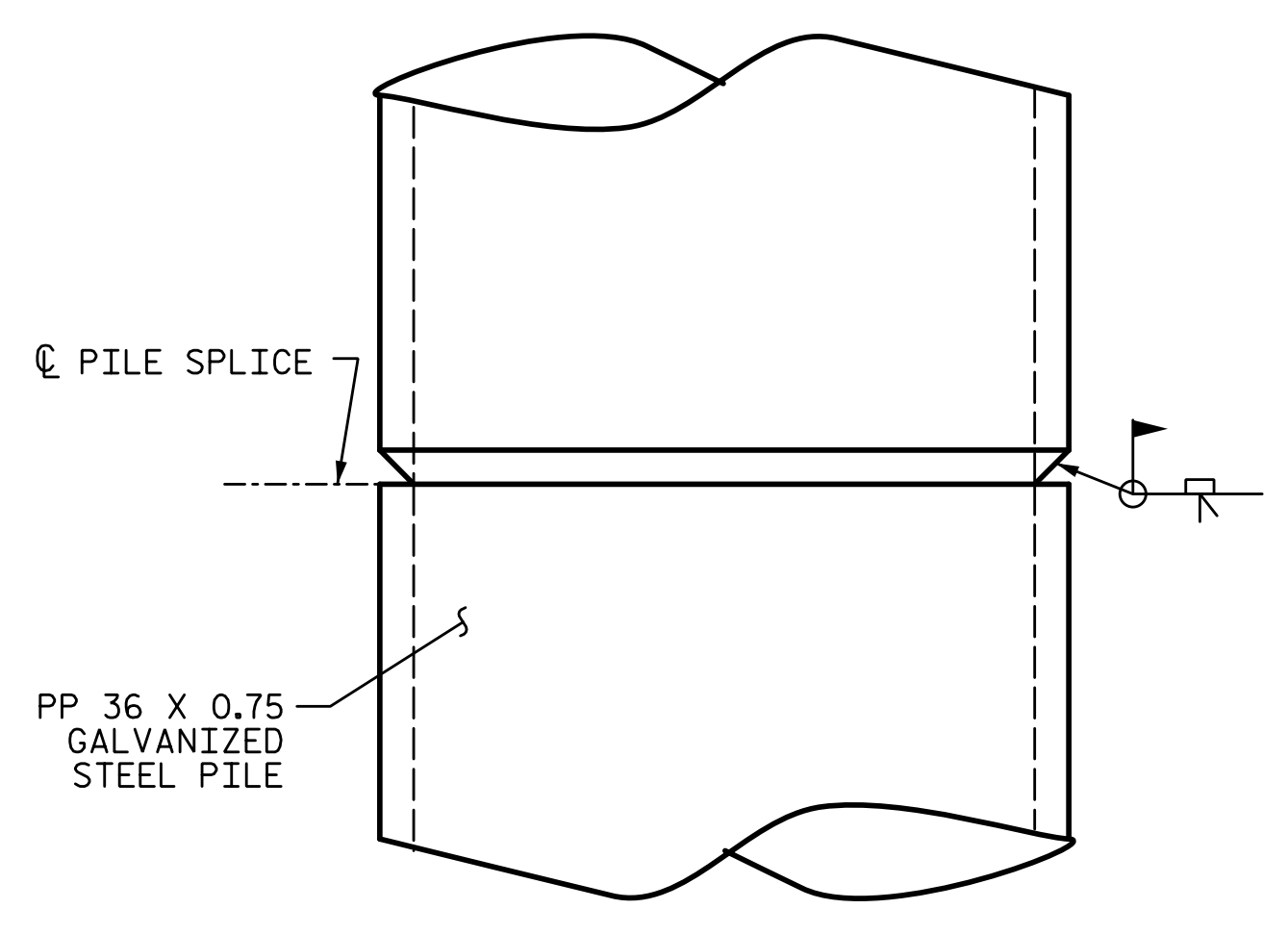


BILL OF MATERIAL FOR ONE PP 36 X 0.75 GALVANIZED STEEL PILE

BAR	NO.	SIZE	TYPE	LENGTH	WEIGHT
S1	6	#4	2	9'-2"	37
V1	20	#6	1	6'-10"	205
TOTAL REINFORCING STEEL					242 LB
CLASS A CONCRETE BREAKDOWN					
5'-0" MINIMUM PLUG					1.2 CY

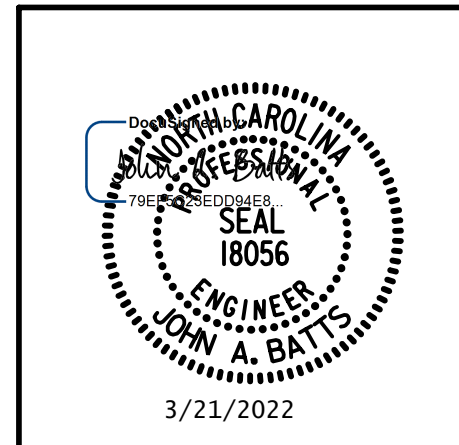
NOTES:

- PIPE PILES SHALL BE IN ACCORDANCE WITH SECTION 1084 OF THE STANDARD SPECIFICATIONS.
- GALVANIZE STEEL PIPE PILES IN ACCORDANCE WITH SECTION 1076 OF THE STANDARD SPECIFICATIONS UNLESS METALLIZING IS REQUIRED.
- REMOVE AND REPLACE OR REPAIR TO THE SATISFACTION OF THE ENGINEER PILES THAT ARE DAMAGED, DEFORMED OR COLLAPSED DURING INSTALLATION OR DRIVING.
- PILE SPLICES SHALL BE IN ACCORDANCE WITH THE STANDARD SPECIFICATIONS AND AWS D1.1.
- FOR OPEN END PIPE PILES, REMOVE ENOUGH SOIL AND WATER FROM INSIDE THE PILES TO CONSTRUCT THE CONCRETE PLUG WITHOUT FOULING THE CONCRETE.
- FORM THE CONCRETE PLUG SUCH THAT THE REINFORCING STEEL OR CONCRETE DOES NOT MOVE AND THE CLEARANCE FROM THE REINFORCING STEEL TO THE INSIDE OF THE PILE IS MAINTAINED AFTER CONCRETE PLACEMENT. DO NOT PLACE CONCRETE IN THE BENT CAP UNTIL THE CONCRETE PLUG HAS ATTAINED A MINIMUM COMPRESSIVE STRENGTH OF 1500 PSI.
- THE REINFORCING STEEL, CLASS A CONCRETE, AND GALVANIZING ARE CONSIDERED INCIDENTAL TO THE CONTRACT UNIT PRICE BID PER LINEAR FOOT FOR PP 36 X 0.75 GALVANIZED STEEL PILES.



PIPE PILE SPLICE DETAIL

PROJECT NO. I-5987B
ROBESON COUNTY
 STATION: 803+15.00 -L-



STATE OF NORTH CAROLINA
 DEPARTMENT OF TRANSPORTATION
 RALEIGH
 SUBSTRUCTURE
 36" STEEL PIPE PILE

REVISIONS						SHEET NO.
NO.	BY:	DATE:	NO.	BY:	DATE:	S9-57
1			3			TOTAL SHEETS
2			4			69

DOCUMENT NOT CONSIDERED FINAL UNLESS ALL SIGNATURES COMPLETED

LICENSURE NO. C-4434