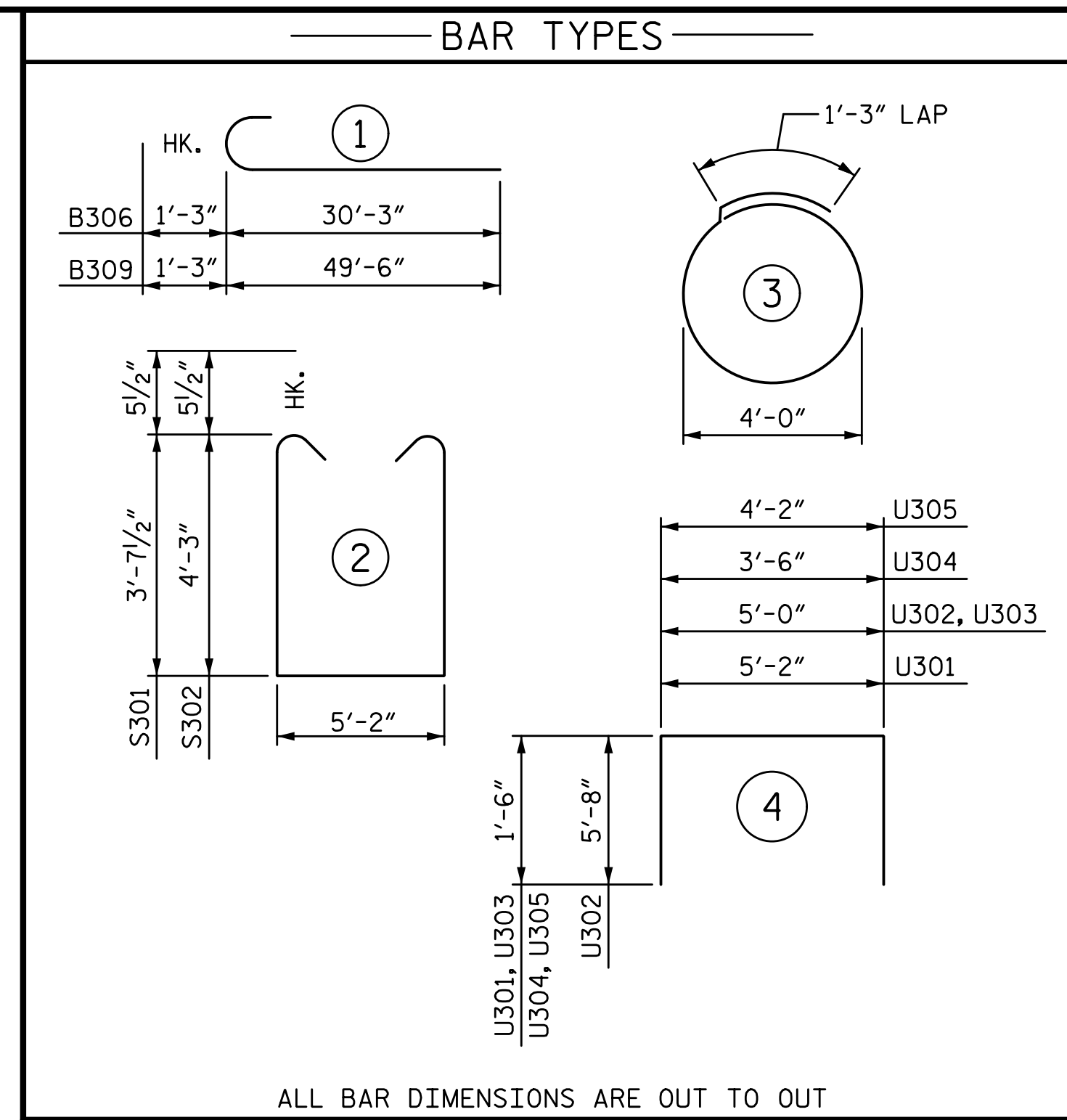
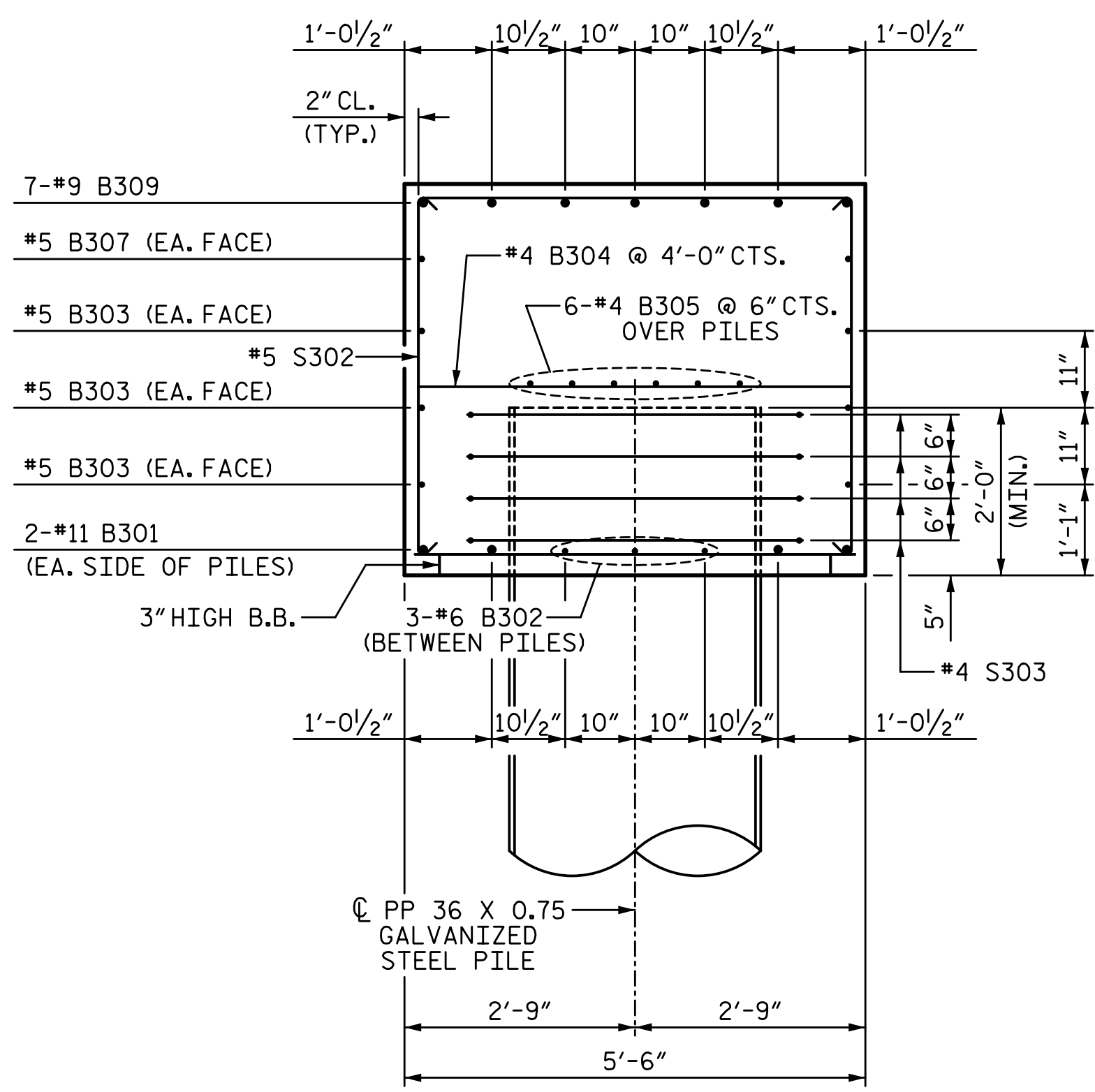
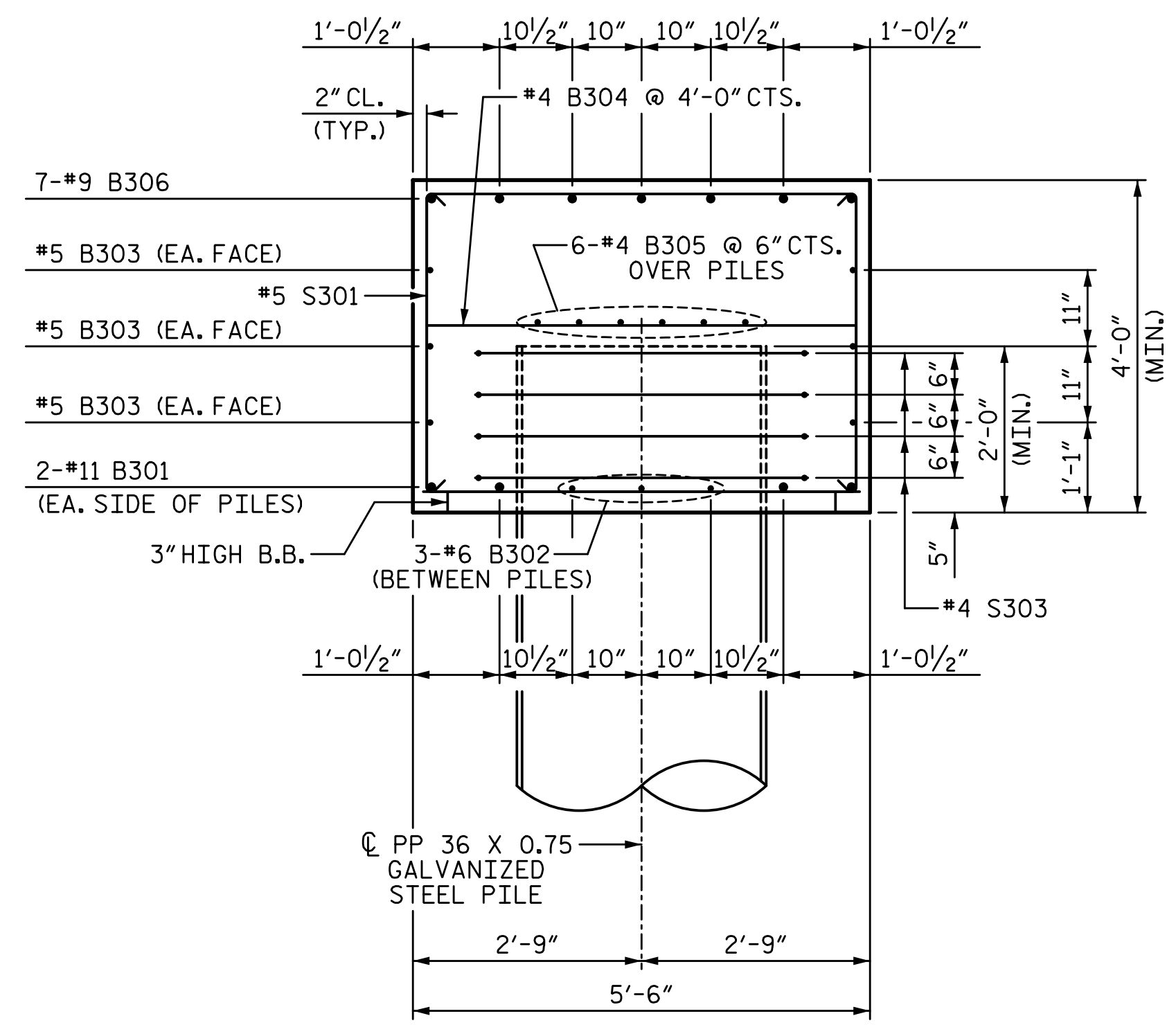
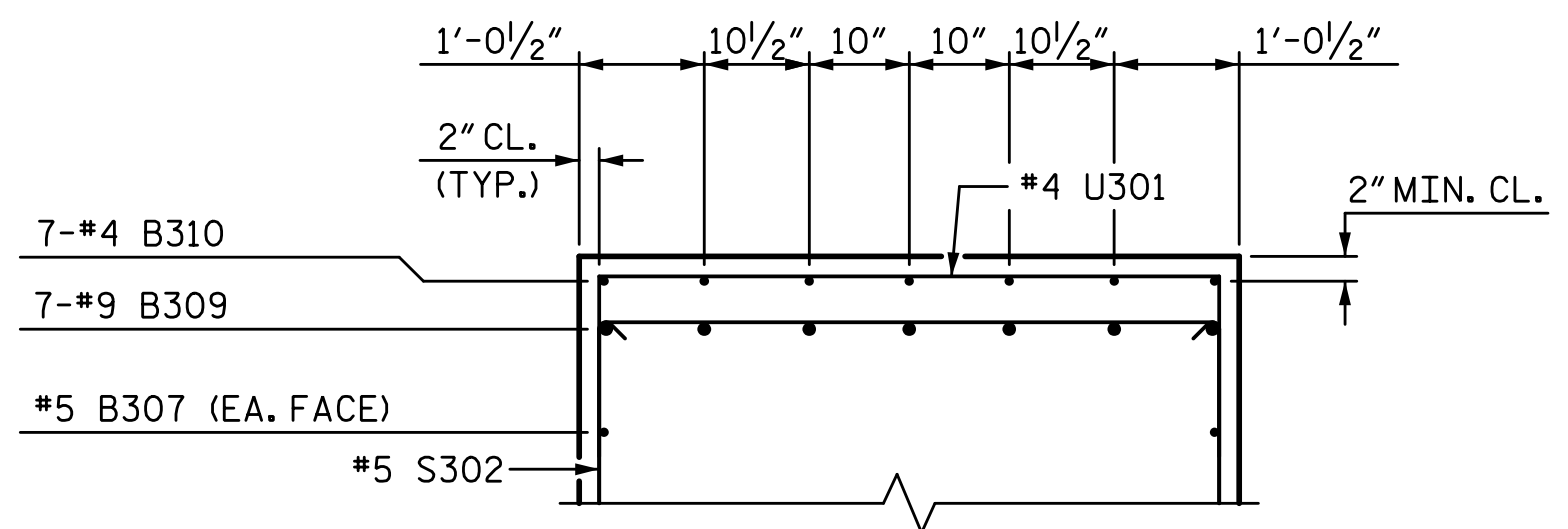
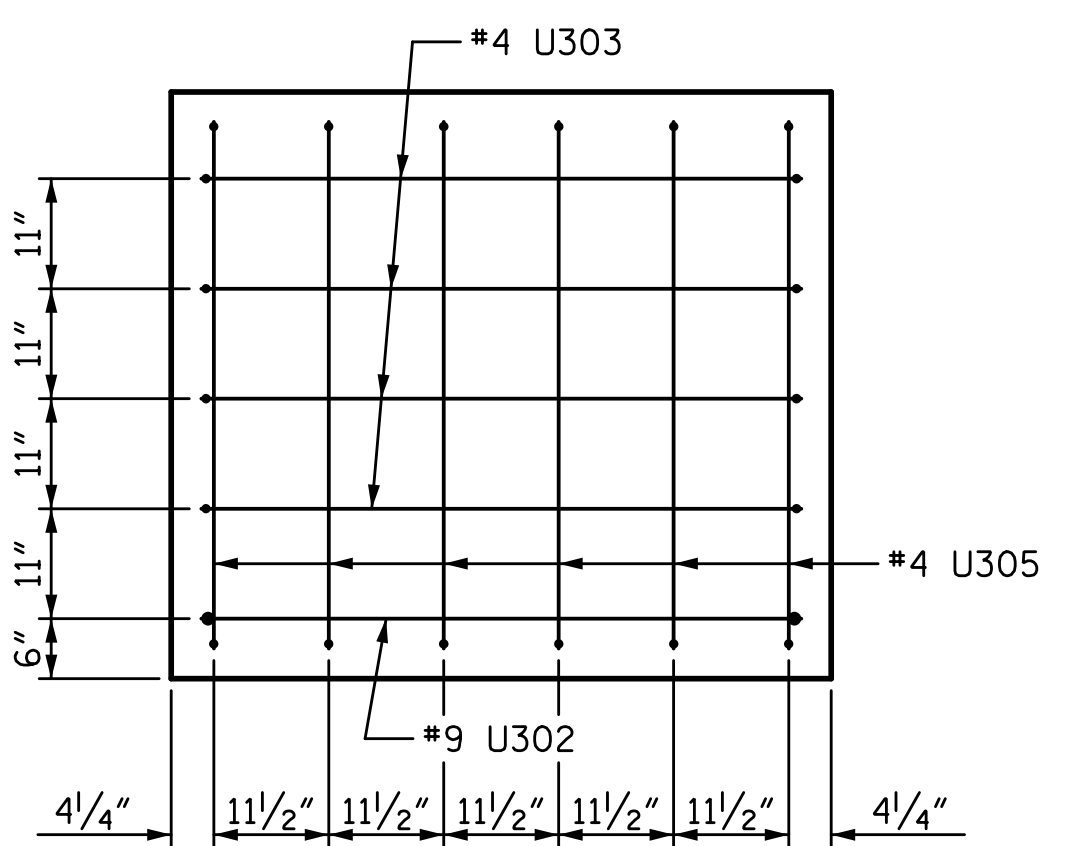
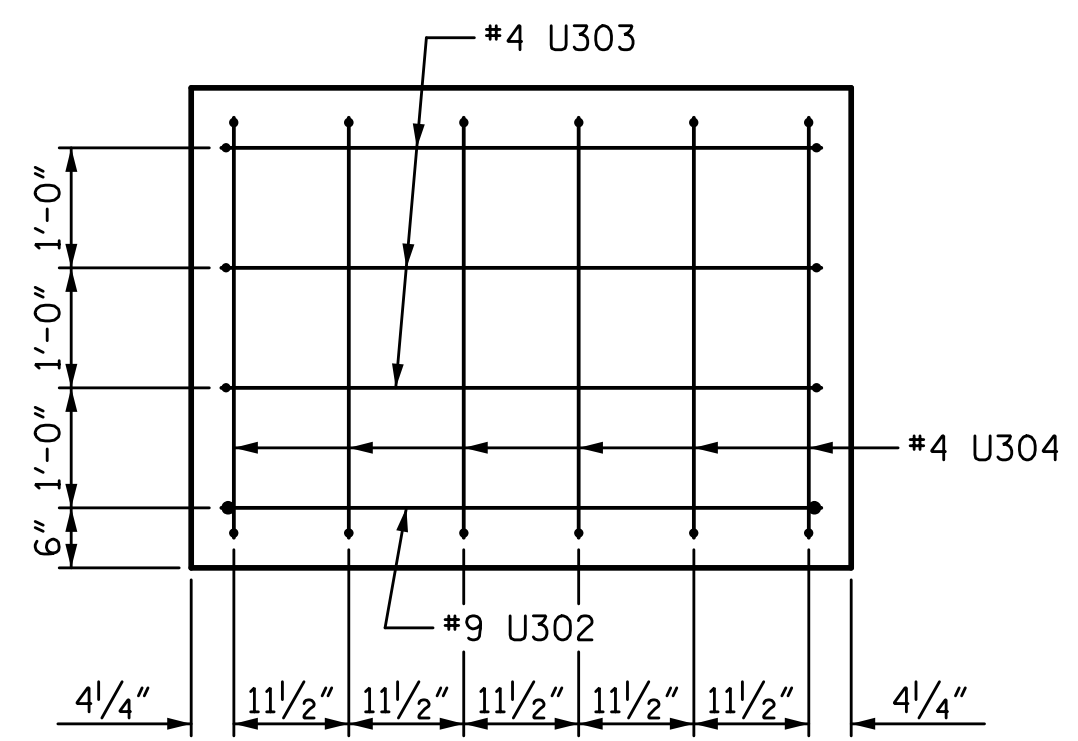


3/18/2022 11:06:47 AM G:\Projects\2020\Division 6 (Mott Mac - NV5)\I-5987B\Structures\Site 9 (L over Little Marsh Swamp)\Drawings\Final\I5987B\_SMU\_B1\_770164.dgn



| BILL OF MATERIAL        |     |      |      |             |        |
|-------------------------|-----|------|------|-------------|--------|
| BENT 1 - STAGE III      |     |      |      |             |        |
| BAR NO.                 | NO. | SIZE | TYPE | LENGTH      | WEIGHT |
| B301                    | 8   | #11  | STR  | 38'-7"      | 1640   |
| B302                    | 18  | #6   | STR  | 7'-10"      | 212    |
| B303                    | 12  | #5   | STR  | 37'-6"      | 469    |
| B304                    | 20  | #4   | STR  | 5'-2"       | 69     |
| B305                    | 12  | #4   | STR  | 37'-3"      | 299    |
| B306                    | 7   | #9   | 1    | 31'-6"      | 750    |
| B307                    | 2   | #5   | STR  | 47'-1"      | 98     |
| B308                    | 7   | #4   | STR  | 11'-0"      | 51     |
| B309                    | 7   | #9   | 1    | 50'-9"      | 1208   |
| B310                    | 7   | #4   | STR  | 27'-2"      | 127    |
| S301                    | 22  | #5   | 2    | 13'-4"      | 306    |
| S302                    | 42  | #5   | 2    | 14'-7"      | 639    |
| S303                    | 28  | #4   | 3    | 13'-10"     | 259    |
| U301                    | 82  | #4   | 4    | 8'-2"       | 447    |
| U302                    | 2   | #9   | 4    | 16'-4"      | 111    |
| U303                    | 7   | #4   | 4    | 8'-0"       | 37     |
| U304                    | 6   | #4   | 4    | 6'-6"       | 26     |
| U305                    | 6   | #4   | 4    | 7'-2"       | 29     |
| TOTAL REINFORCING STEEL |     |      |      | 6777 LB     |        |
| TOTAL CLASS A CONCRETE  |     |      |      | *** 64.5 CY |        |

\*\*\* CONCRETE DISPLACED BY THE PP 36 X 0.75 GALVANIZED STEEL PILES HAS BEEN DEDUCTED FROM THE CONCRETE QUANTITY.

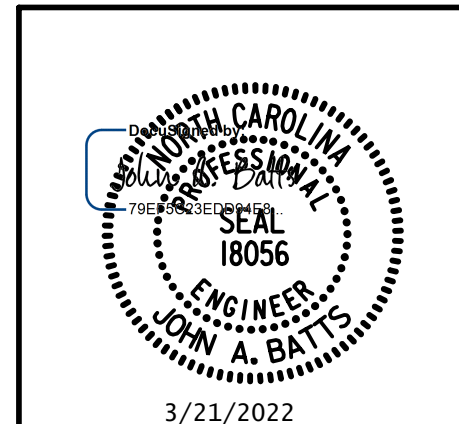
ALL BAR DIMENSIONS ARE OUT TO OUT

PROJECT NO. I-5987B  
ROBESON COUNTY  
 STATION: 803+15.00 -L-

SHEET 6 OF 6

STATE OF NORTH CAROLINA  
 DEPARTMENT OF TRANSPORTATION  
 RALEIGH  
 SUBSTRUCTURE

BENT 1  
 STAGE III



DRAWN BY: T. BANKOVICH DATE: 3-22  
 CHECKED BY: J.A. BATTS DATE: 3-22  
 DESIGN ENGINEER OF RECORD: J.A. BATTS DATE: 3-22

| REVISIONS |     |       |     |     |       | SHEET NO.    |
|-----------|-----|-------|-----|-----|-------|--------------|
| NO.       | BY: | DATE: | NO. | BY: | DATE: | S9-56        |
| 1         |     |       | 3   |     |       | TOTAL SHEETS |
| 2         |     |       | 4   |     |       | 69           |

DOCUMENT NOT CONSIDERED FINAL  
 UNLESS ALL SIGNATURES COMPLETED