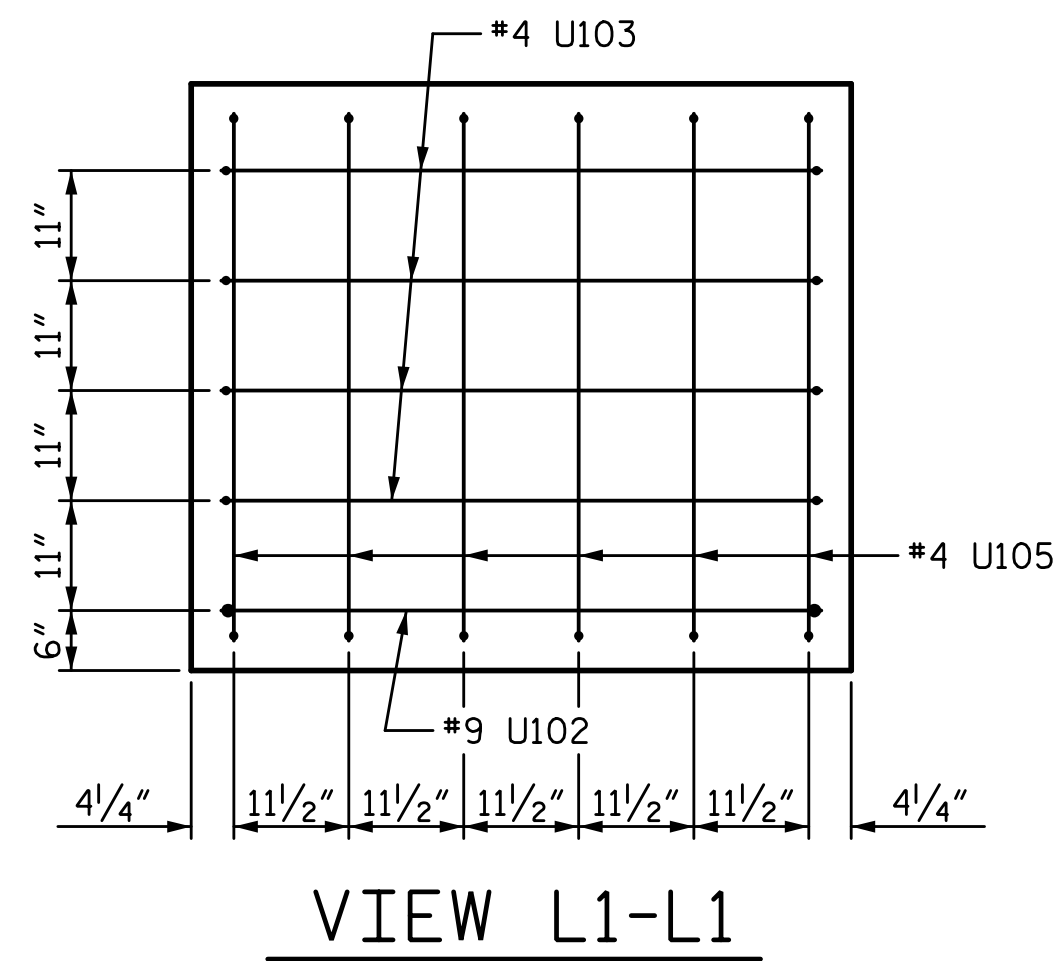
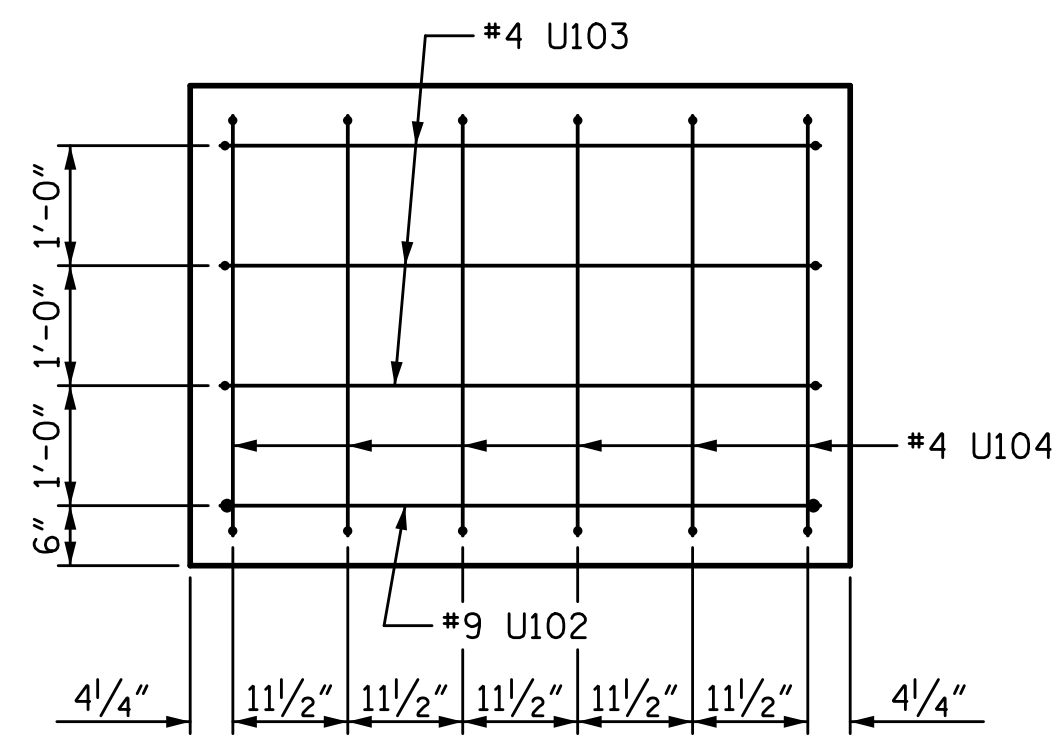


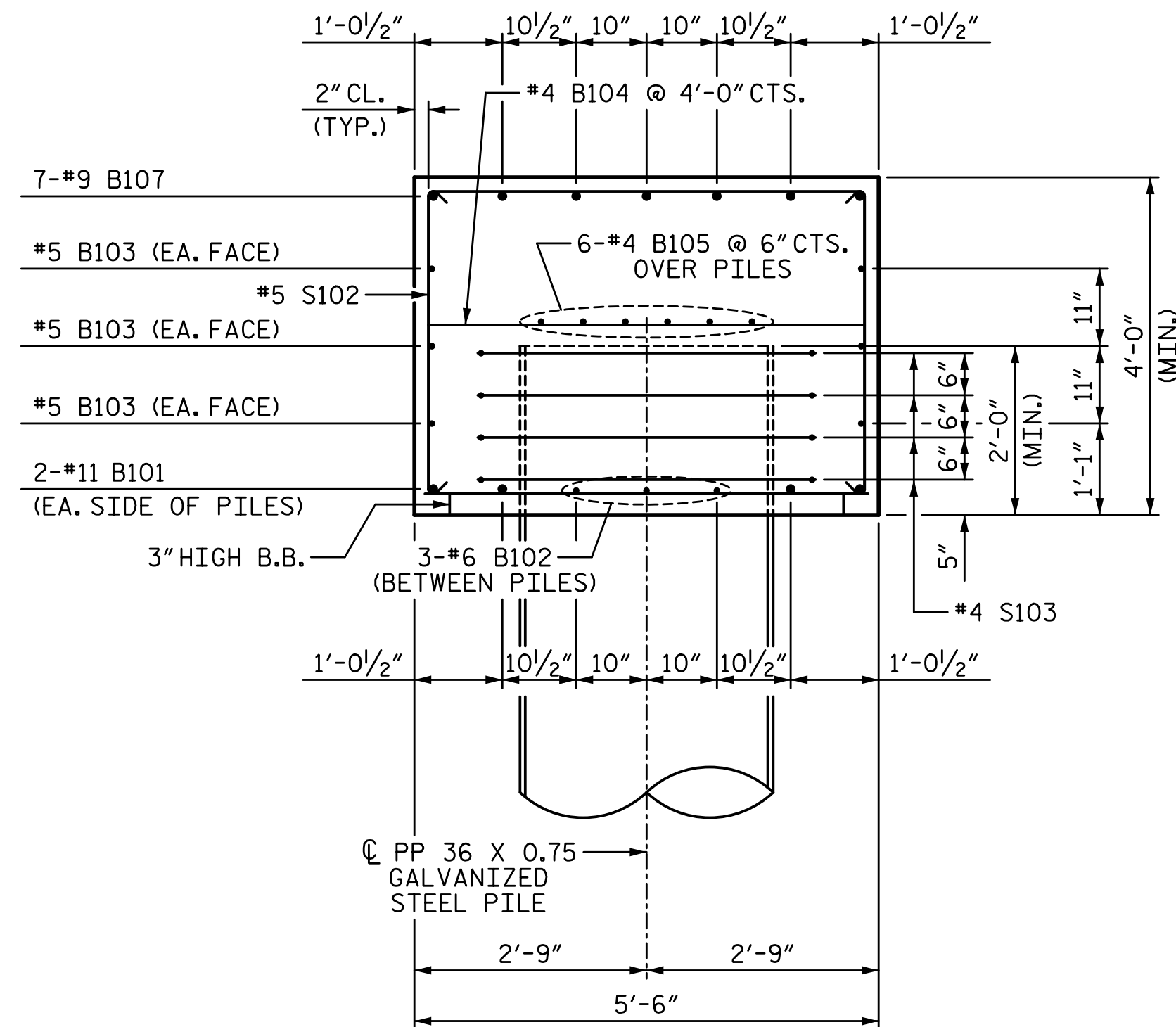
3/18/2022 11:06:45 AM G:\Projects\2020\Division 6 (Mott Mac - NV5)\I-5987B\Structures\Site 9 (L over Little Marsh Swamp)\Drawings\Final\I5987B\_SMU\_B1\_770164.dgn



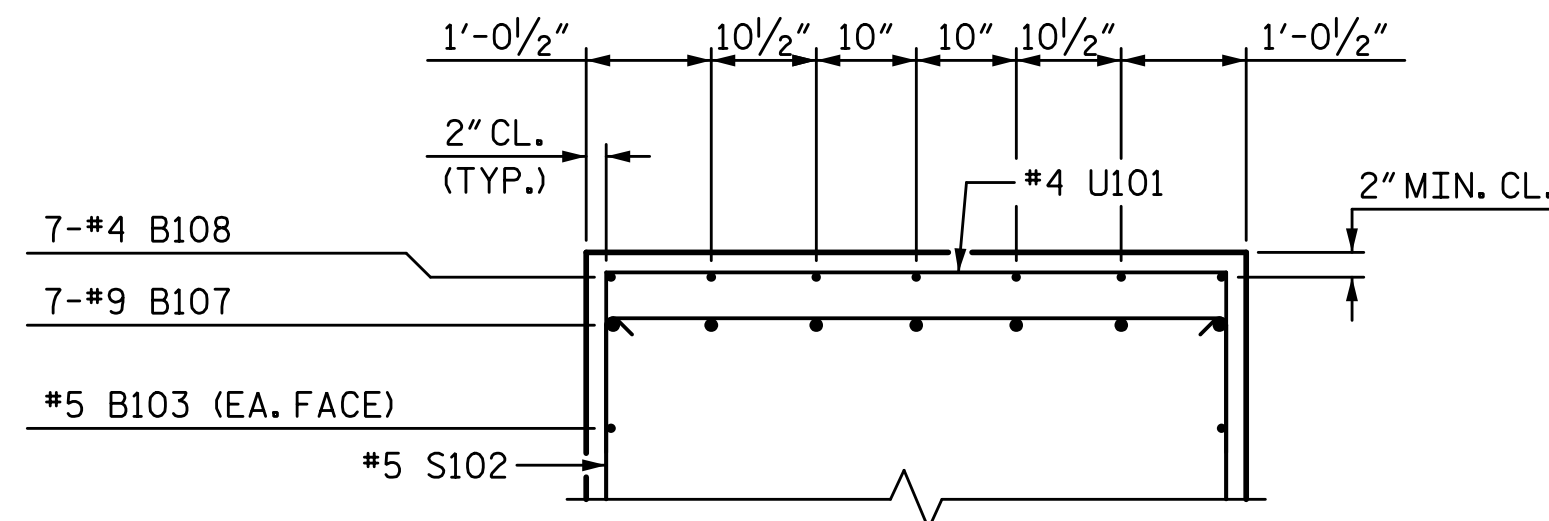
VIEW L1-L1



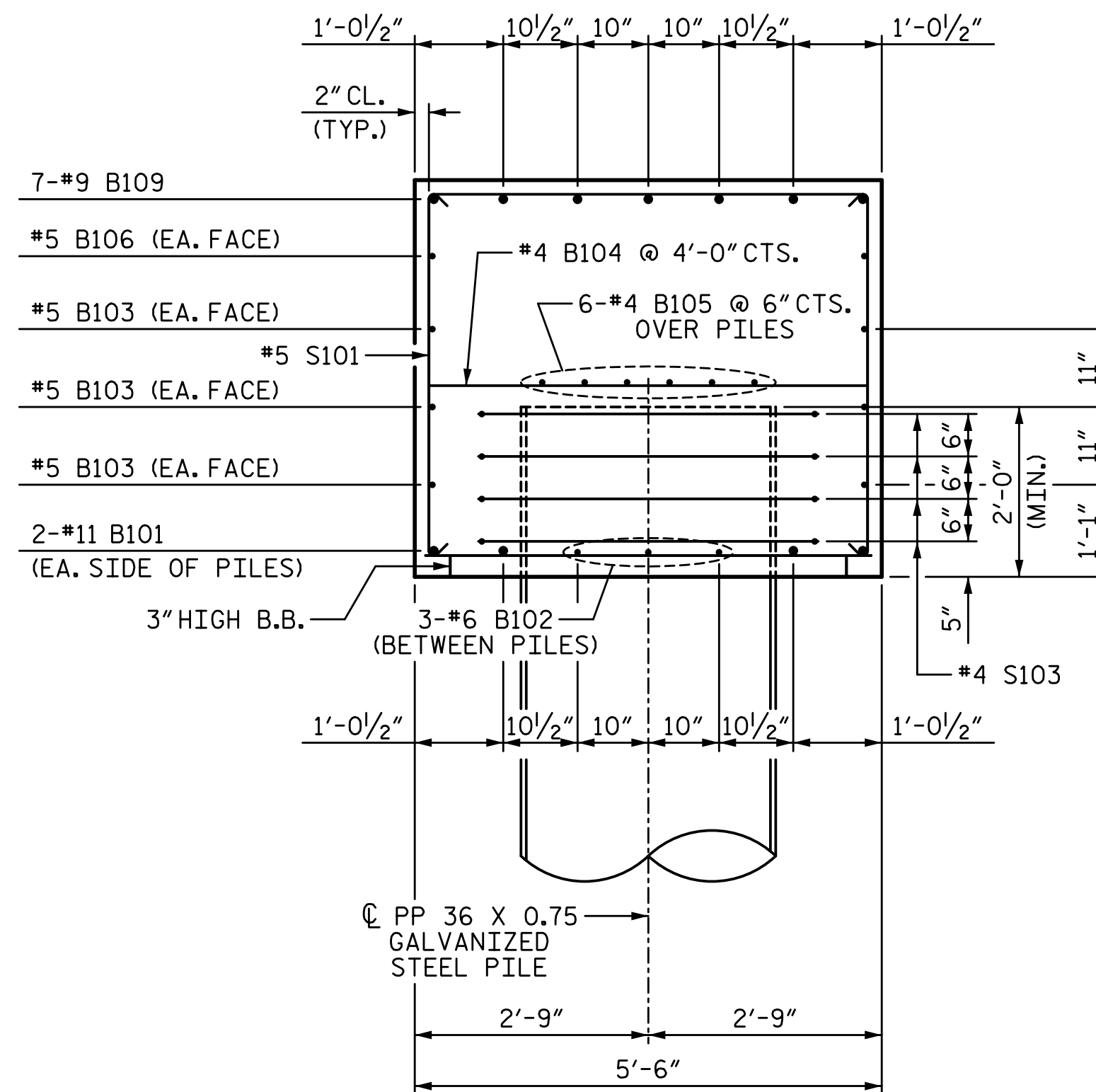
VIEW R1-R1



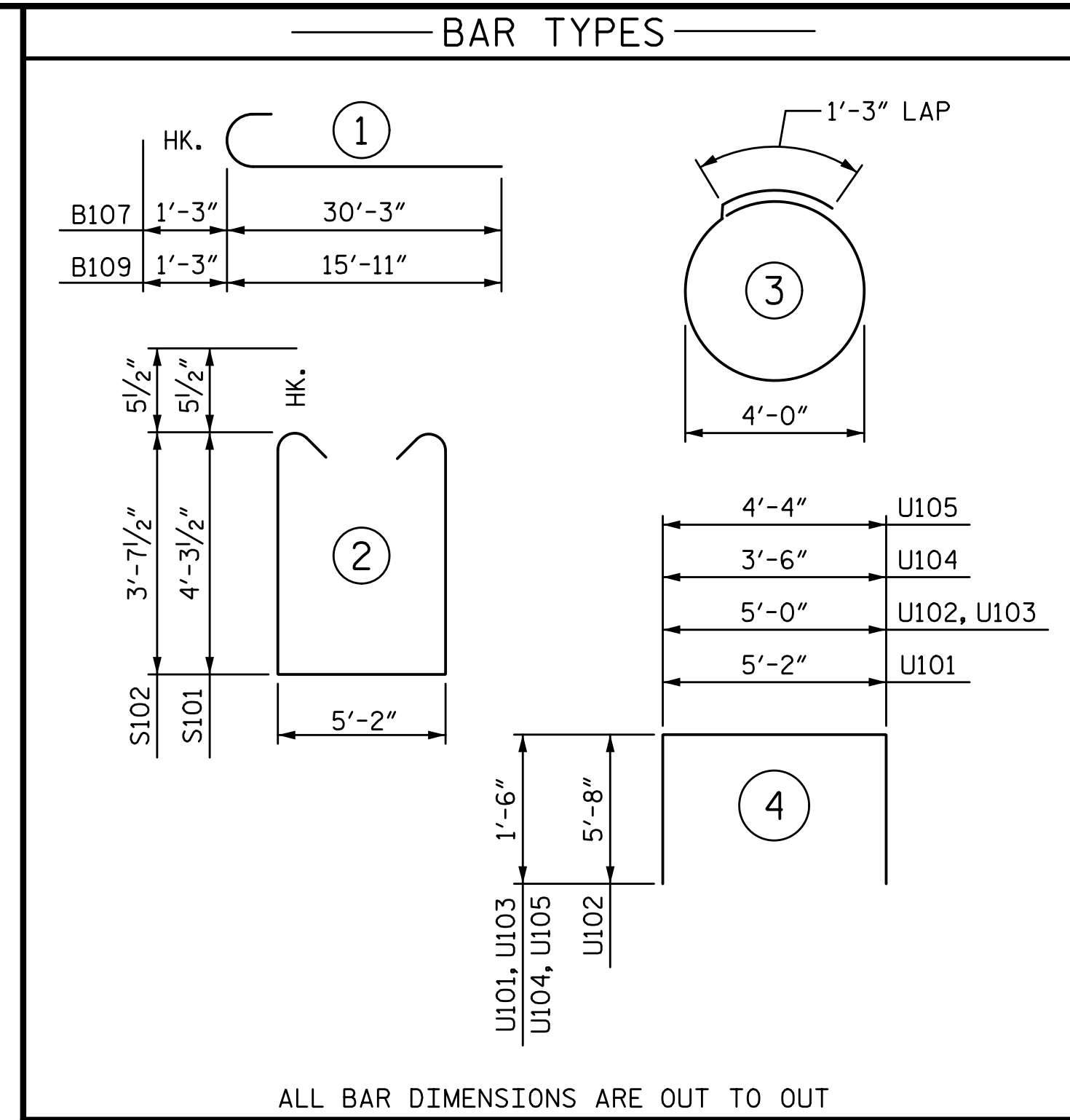
SECTION A1-A1



PARTIAL SECTION C1-C1



SECTION B1-B1



ALL BAR DIMENSIONS ARE OUT TO OUT

BILL OF MATERIAL					
BENT 1 - STAGE I					
BAR	NO.	SIZE	TYPE	LENGTH	WEIGHT
B101	4	#11	STR	38'-5"	816
B102	9	#6	STR	7'-9"	105
B103	6	#5	STR	38'-5"	240
B104	11	#4	STR	5'-2"	38
B105	6	#4	STR	38'-5"	154
B106	2	#5	STR	13'-10"	29
B107	7	#9	1	31'-6"	750
B108	7	#4	STR	10'-11"	51
B109	7	#9	1	17'-2"	409
B110	7	#4	STR	4'-11"	23
S101	12	#5	2	14'-8"	184
S102	22	#5	2	13'-4"	306
S103	16	#4	3	13'-10"	148
U101	44	#4	4	8'-2"	240
U102	2	#9	4	16'-4"	111
U103	7	#4	4	8'-0"	37
U104	6	#4	4	6'-6"	26
U105	6	#4	4	7'-4"	29
TOTAL REINFORCING STEEL					3696 LB
TOTAL CLASS A CONCRETE ***					32.7 CY

\*\*\* CONCRETE DISPLACED BY THE PP 36 X 0.75 GALVANIZED STEEL PILES HAS BEEN DEDUCTED FROM THE CONCRETE QUANTITY.

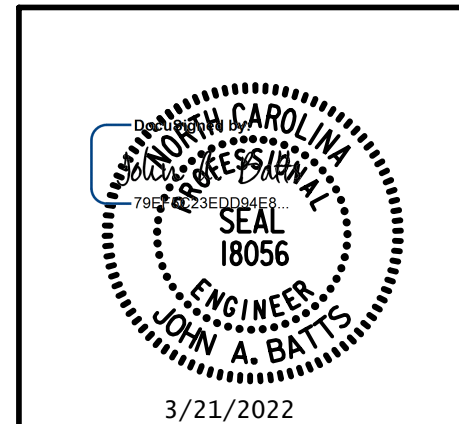
PROJECT NO. I-5987B  
ROBESON COUNTY  
 STATION: 803+15.00 -L-

SHEET 2 OF 6

STATE OF NORTH CAROLINA  
 DEPARTMENT OF TRANSPORTATION  
 RALEIGH  
 SUBSTRUCTURE

**BENT 1**

STAGE I



REVISIONS					
NO.	BY:	DATE:	NO.	BY:	DATE:
1			3		
2			4		

SHEET NO.	S9-52
TOTAL SHEETS	69

DRAWN BY: T. BANKOVICH DATE: 3-22  
 CHECKED BY: J.A. BATTS DATE: 3-22  
 DESIGN ENGINEER OF RECORD: J.A. BATTS DATE: 3-22

DOCUMENT NOT CONSIDERED FINAL  
 UNLESS ALL SIGNATURES COMPLETED