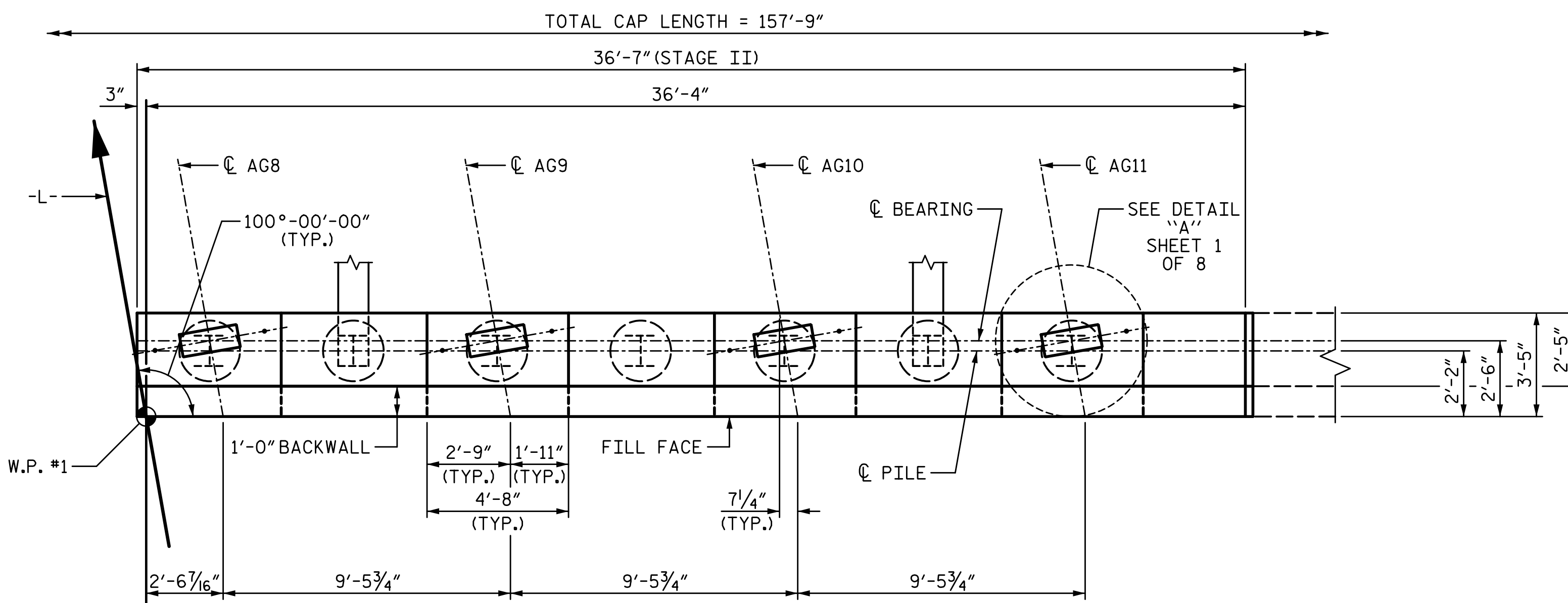
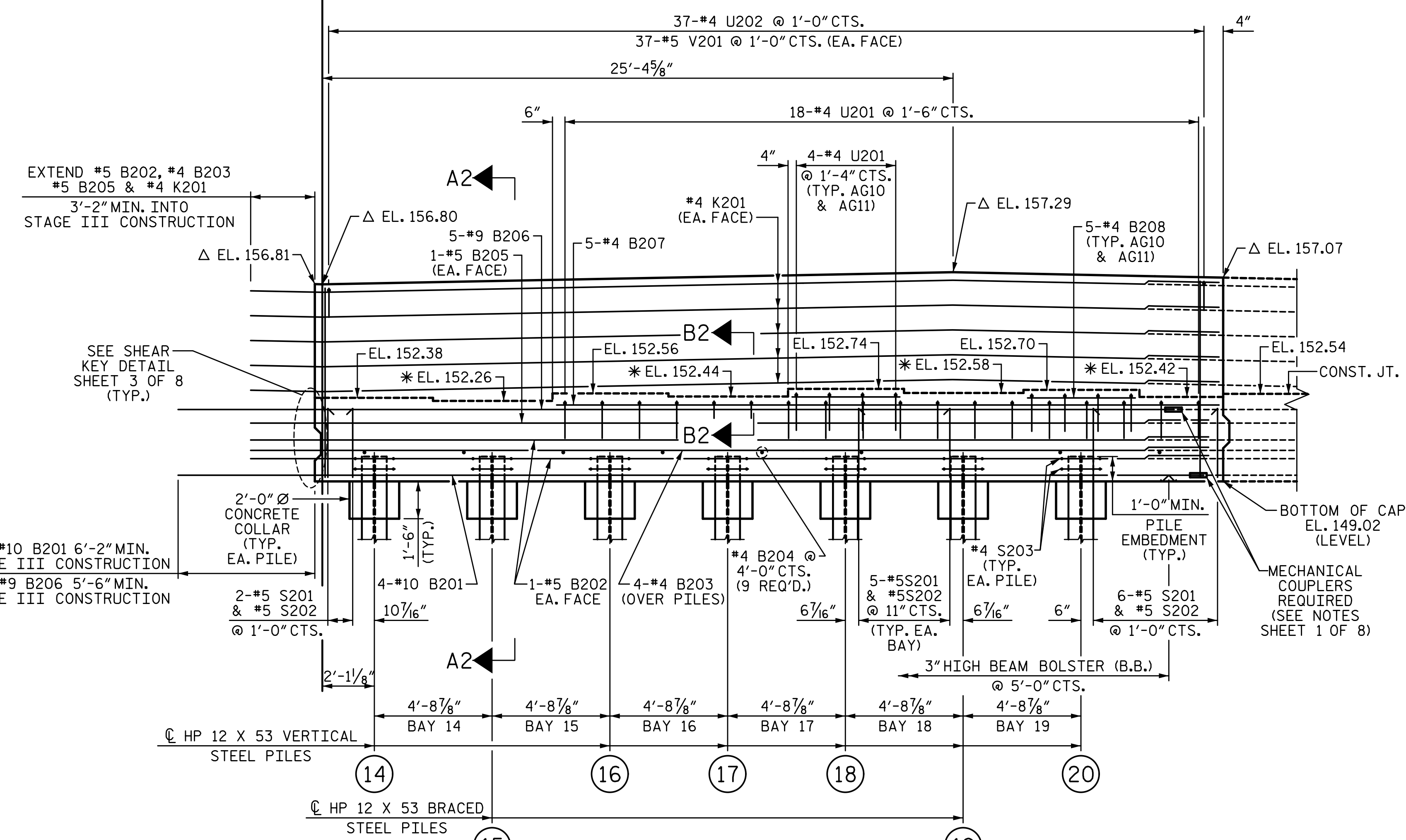


3/18/2022 11:06:41 AM G:\Projects\2020\Division 6 (Mott Mac - NV5)\I-5987B\Structures\Site 9 (L over Little Marsh Swamp)\Drawings\Final\I5987B_SMU_EI_770164.dgn



PLAN



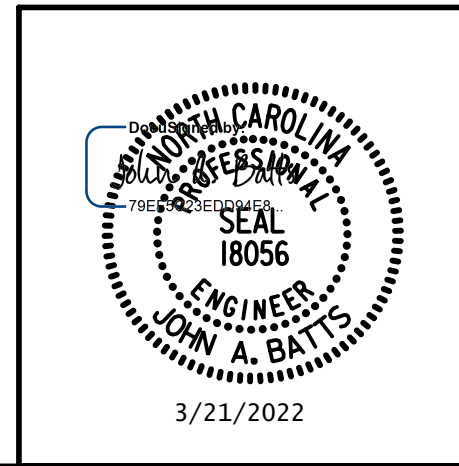
ELEVATION

Ⓜ INDICATES PILE NUMBER

NOTES:
 FOR SECTION A2-A2 AND PART SECTION B2-B2, SEE SHEET 5 OF 8.
 *FOR LOCATION OF ELEVATIONS BETWEEN BRIDGE SEAT BUILD-UPS, SEE SECTION A2-A2 SHEET 5 OF 8.
 FOR ADDITIONAL NOTES, SEE SHEET 1 OF 8.
 Δ BACKWALL ELEVATIONS ARE GIVEN AT FILL FACE

PROJECT NO. I-5987B
ROBESON COUNTY
 STATION: 803+15.00 -L-
 SHEET 4 OF 8

STATE OF NORTH CAROLINA
 DEPARTMENT OF TRANSPORTATION
 RALEIGH
 SUBSTRUCTURE
 END BENT 1
 STAGE II



DRAWN BY: S.D. COOPER DATE: 3-22
 CHECKED BY: J.A. BATTS DATE: 3-22
 DESIGN ENGINEER OF RECORD: J.A. BATTS DATE: 3-22

REVISIONS						SHEET NO.
NO.	BY:	DATE:	NO.	BY:	DATE:	S9-46
1			3			TOTAL SHEETS
2			4			69

**DOCUMENT NOT CONSIDERED FINAL
 UNLESS ALL SIGNATURES COMPLETED**