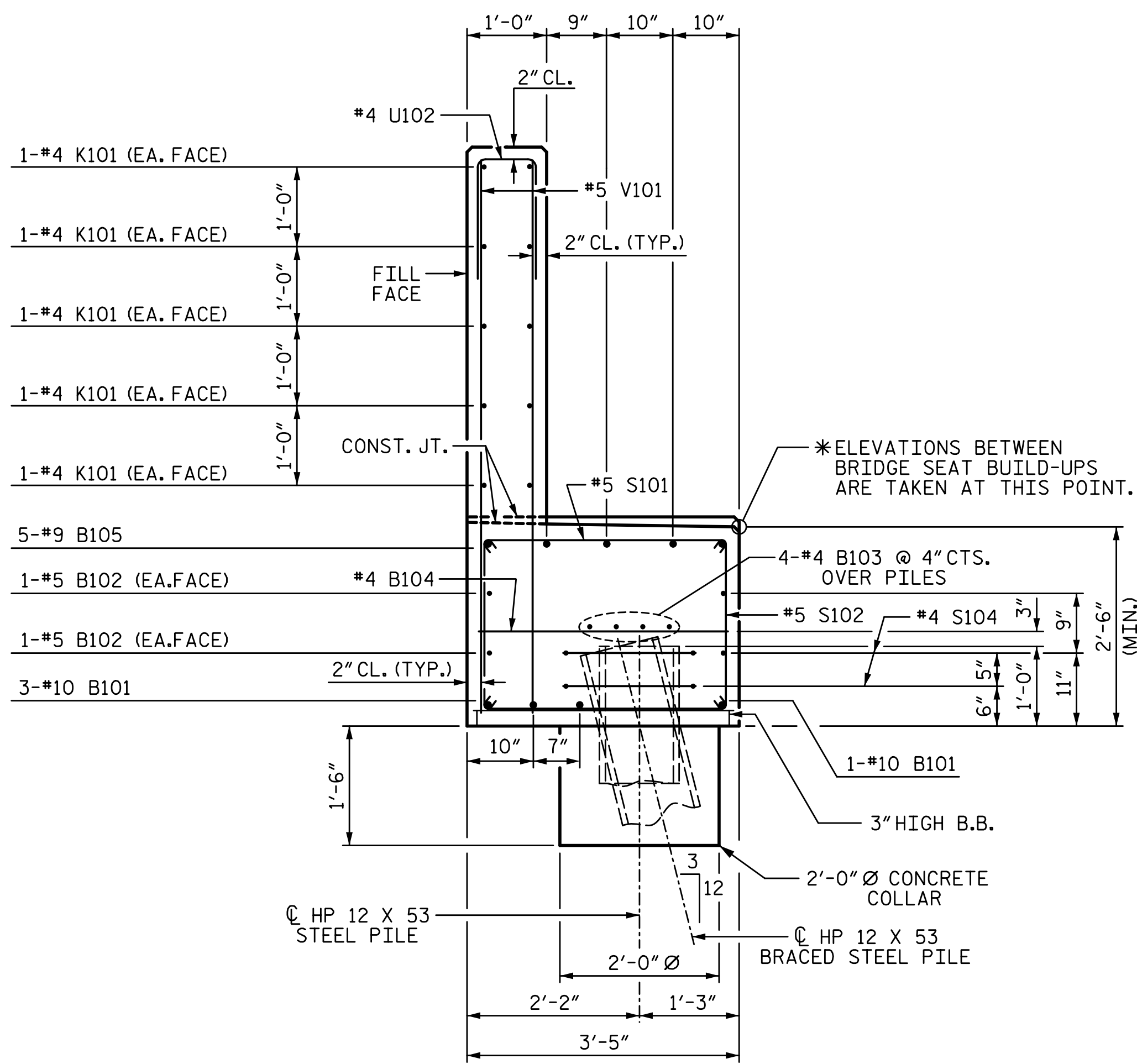
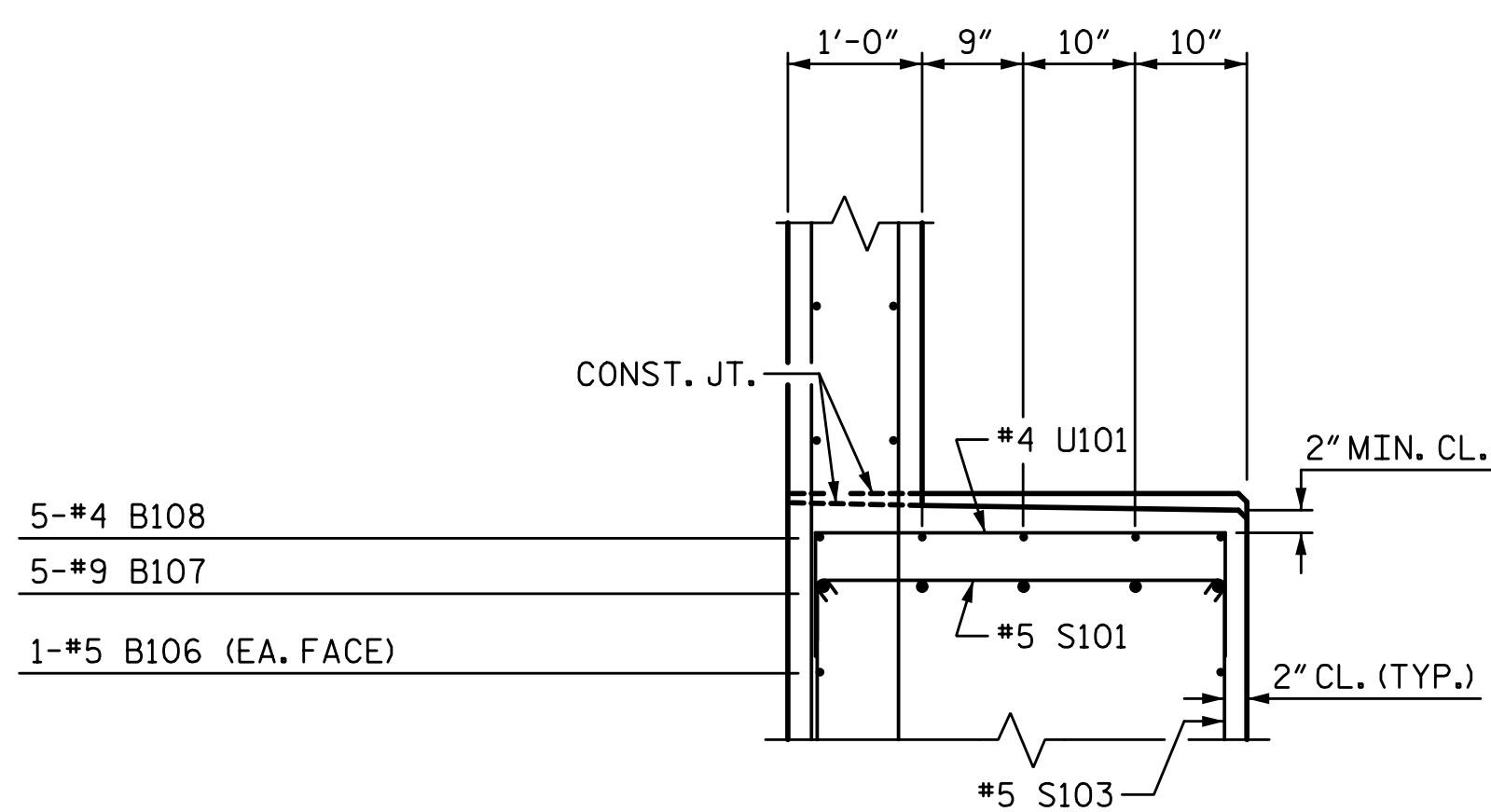


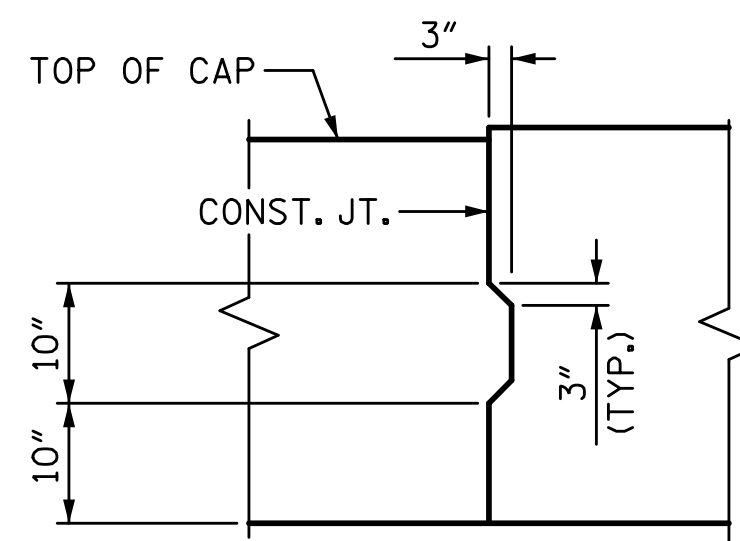
3/18/2022 11:06:40 AM G:\Projects\2020\Division 6 (Mott Mac - NV5)\I-5987B\Structures\Site 9 (L over Little Marsh Swamp)\Drawings\Final\I5987B\_SMU\_E1\_770164.dgn



SECTION A1-A1

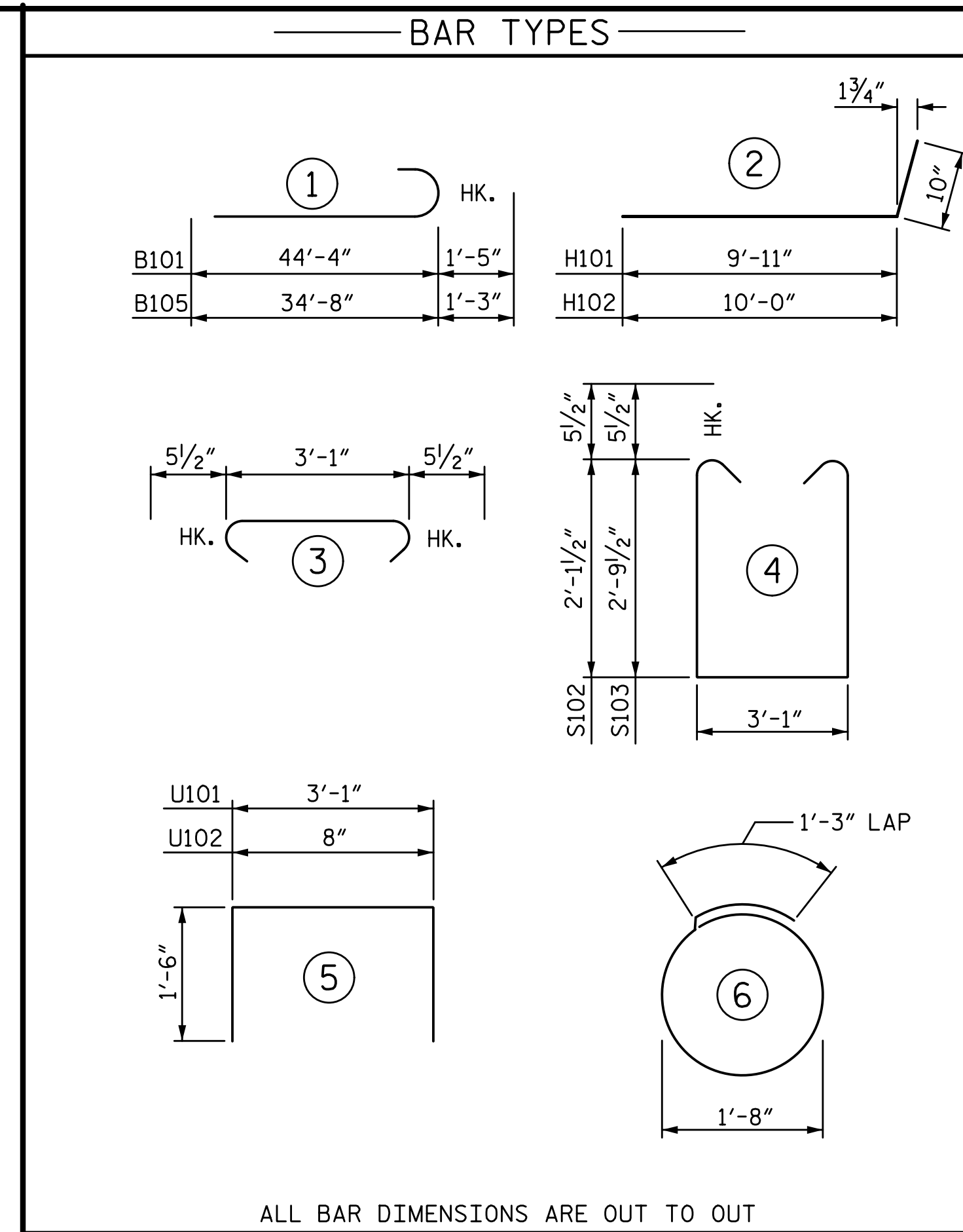


PART SECTION B1-B1



SHEAR KEY DETAIL

REINFORCING STEEL IN CAP NOT SHOWN.  
"B" BARS SHALL BE CONTINUOUS THROUGH JOINT.



ALL BAR DIMENSIONS ARE OUT TO OUT

BILL OF MATERIAL

END BENT 1 - STAGE I

BAR	NO.	SIZE	TYPE	LENGTH	WEIGHT
B101	4	#10	1	45'-9"	787
B102	4	#5	STR	45'-5"	189
B103	8	#4	STR	23'-11"	128
B104	13	#4	STR	3'-1"	27
B105	5	#9	1	35'-11"	611
B106	2	#5	STR	16'-4"	34
B107	5	#9	STR	17'-8"	300
B108	5	#4	STR	4'-4"	14
B109	5	#4	STR	11'-1"	37
H101	12	#5	2	10'-9"	135
H102	12	#5	2	10'-10"	136
K101	20	#4	STR	23'-11"	320
K102	4	#4	STR	2'-7"	7
S101	38	#5	3	4'-0"	159
S102	24	#5	4	8'-3"	207
S103	14	#5	4	9'-7"	140
S104	14	#4	6	6'-6"	61
U101	12	#4	5	6'-1"	49
U102	40	#4	5	3'-8"	98
V101	80	#5	STR	6'-8"	556
V102	30	#5	STR	8'-0"	250

TOTAL REINFORCING STEEL 4245 LB

CLASS A CONCRETE BREAKDOWN

POUR 1 (CAP, COLLARS, & LOWER WING)	17.7 CY
POUR 2 (BACKWALL & UPPER WING)	9.6 CY
TOTAL CLASS A CONCRETE	27.3 CY

PROJECT NO. I-5987B  
ROBESON COUNTY  
 STATION: 803+15.00 -L-

SHEET 3 OF 8

STATE OF NORTH CAROLINA  
 DEPARTMENT OF TRANSPORTATION  
 RALEIGH  
 SUBSTRUCTURE

END BENT 1

STAGE I

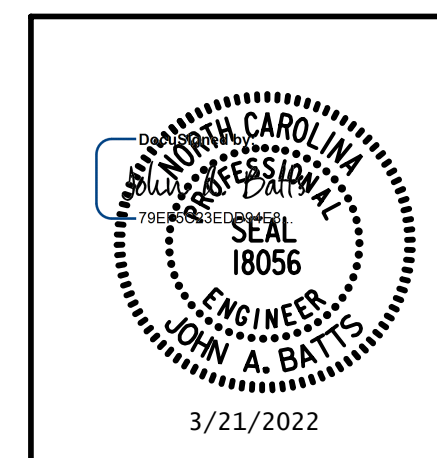
REVISIONS

NO.	BY:	DATE:	NO.	BY:	DATE:	SHEET NO.
1			3			S9-45
2			4			TOTAL SHEETS 69



5640 Dillard Drive, Suite 200  
 Cary, NC 27518

LICENSURE NO. C-4434



3/21/2022

DRAWN BY: S.D. COOPER DATE: 3-22  
 CHECKED BY: J.A. BATTS DATE: 3-22  
 DESIGN ENGINEER OF RECORD: J.A. BATTS DATE: 3-22

DOCUMENT NOT CONSIDERED FINAL  
 UNLESS ALL SIGNATURES COMPLETED