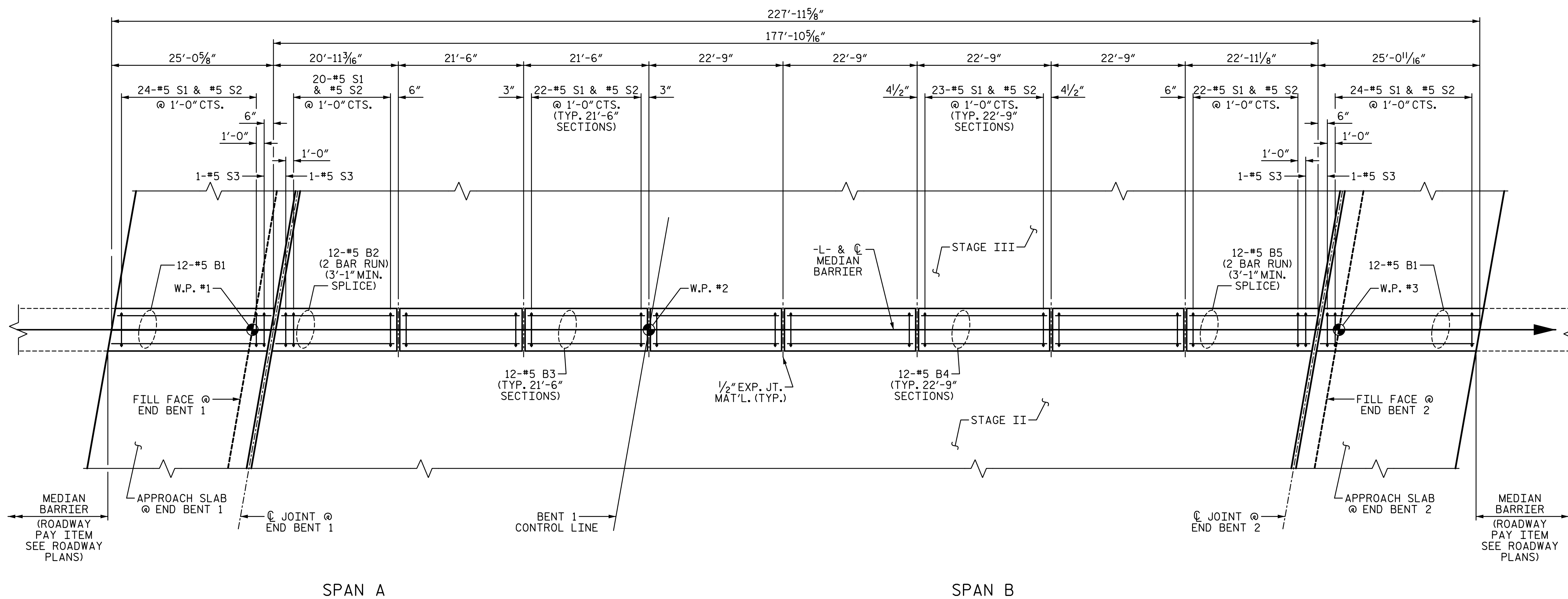
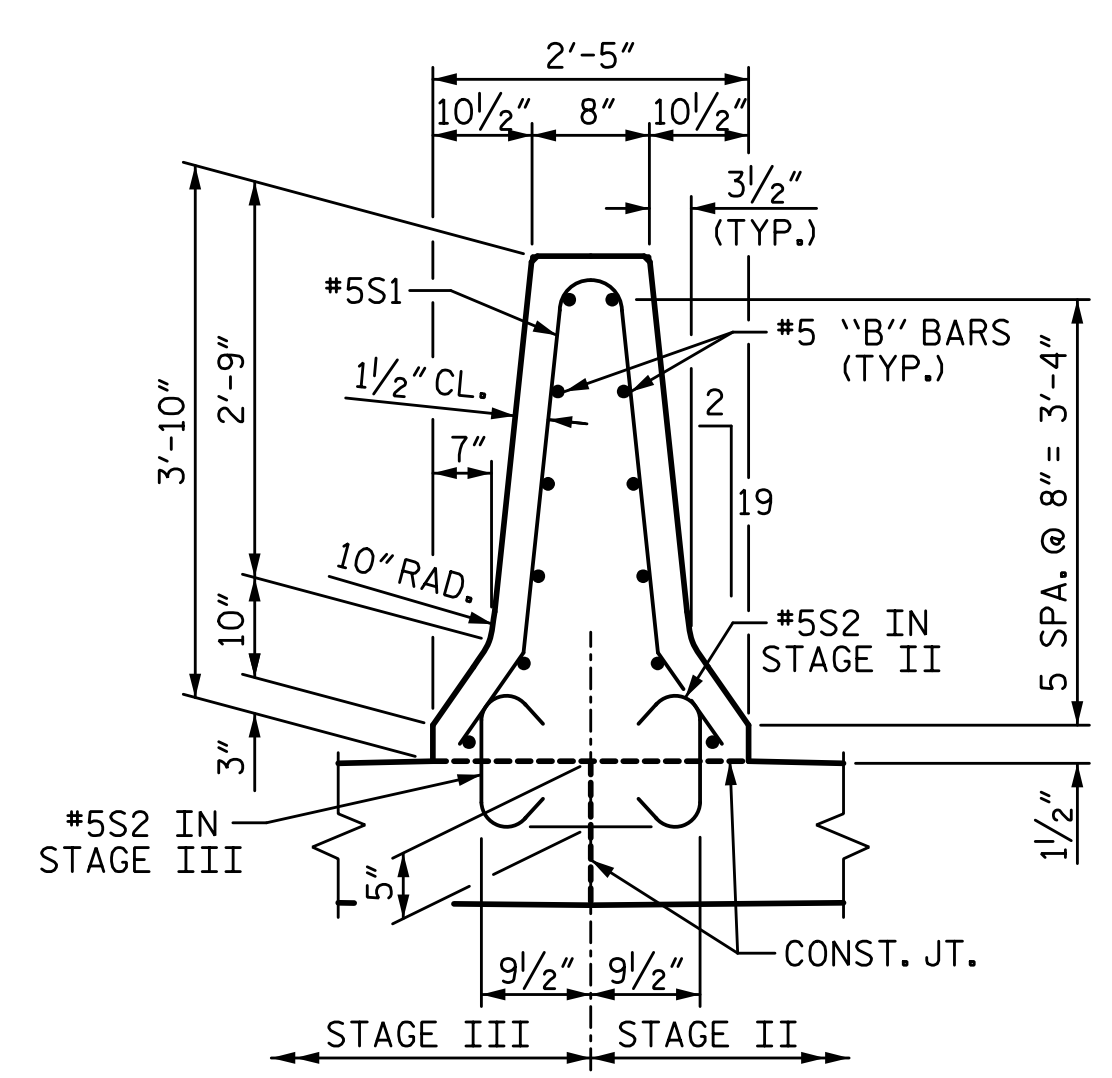


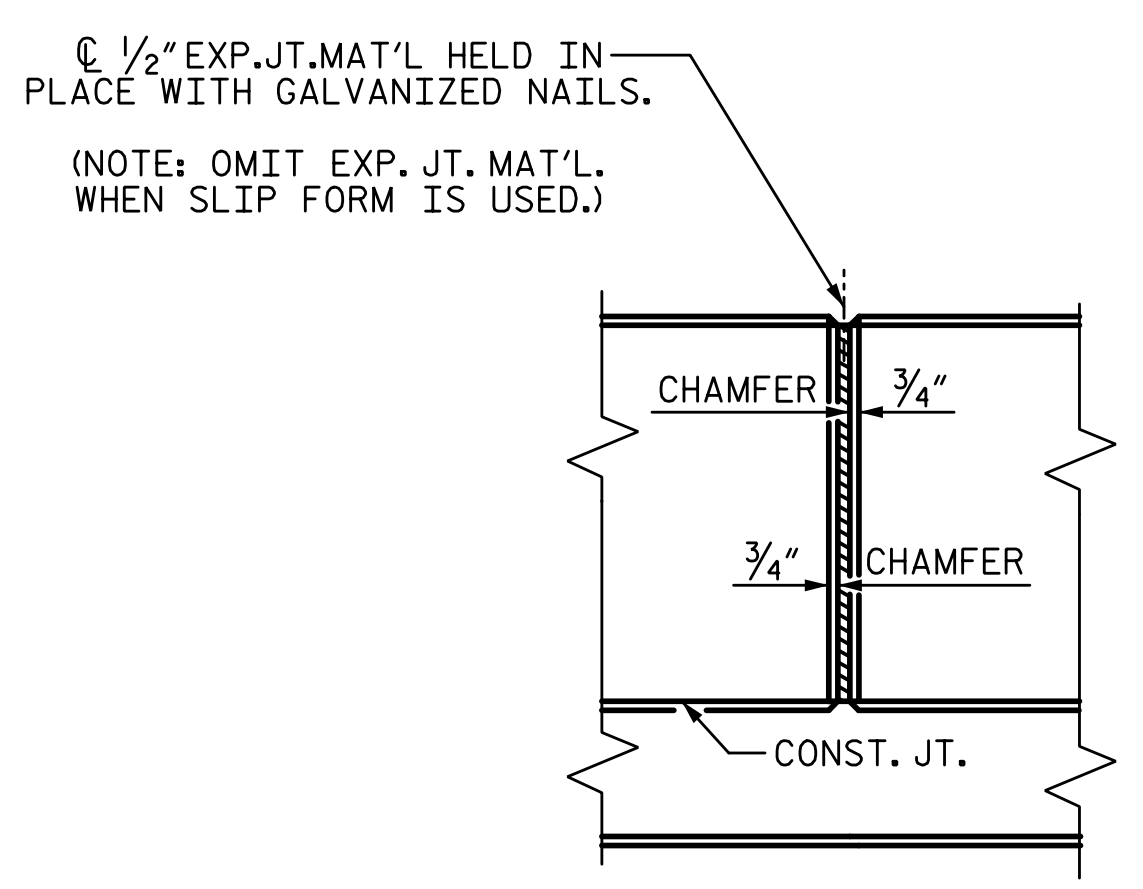
3/18/2022 11:06:33 AM G:\Projects\2020\Division 6 (Mott Mac - NV5)\I-5987B\Structures\Site 9 (L over Little Marsh Swamp)\Drawings\Final\I5987B_SMU_MR_770164.dgn



PLAN OF MEDIAN BARRIER



SECTION THRU MEDIAN BARRIER



ELEVATION AT EXPANSION JOINTS

MEDIAN BARRIER DETAILS

DRAWN BY: S.D. COOPER DATE: 3-22
 CHECKED BY: J.A. BATTS DATE: 3-22
 DESIGN ENGINEER OF RECORD: J.A. BATTS DATE: 3-22

NOTES:

THE MEDIAN BARRIER IN A CONTINUOUS UNIT SHALL NOT BE CAST UNTIL ALL SLAB CONCRETE IN THAT UNIT HAS BEEN CAST AND HAS REACHED A MINIMUM COMPRESSIVE STRENGTH OF 3,000 PSI.

ALL REINFORCING STEEL IN MEDIAN BARRIER SHALL BE EPOXY COATED.

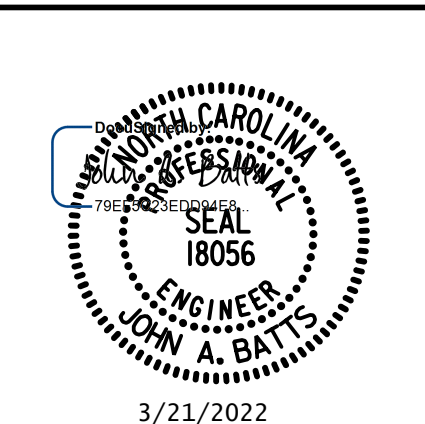
THE #5S2 BARS IN STAGE II AND IN STAGE III MAY BE PUSHED INTO GREEN CONCRETE AFTER SCREEDING.

GROOVED CONTRACTION JOINTS, 1/2" IN DEPTH, SHALL BE TOOLED IN ALL EXPOSED FACES OF THE MEDIAN BARRIER AND IN ACCORDANCE WITH ARTICLE 825-10(B) OF THE STANDARD SPECIFICATIONS. THE CONTRACTION JOINT SHALL BE LOCATED AT EACH THIRD POINT BETWEEN MEDIAN BARRIER EXPANSION JOINTS. ONLY ONE CONTRACTION JOINT IS REQUIRED AT MIDPOINT OF MEDIAN BARRIER SEGMENTS LESS THAN 20 FEET IN LENGTH AND NO CONTRACTION JOINTS ARE REQUIRED FOR THOSE SEGMENTS LESS THAN 10 FEET IN LENGTH.

THE #5 S1 BARS MAYBE SHIFTED SLIGHTLY OR FIELD BENT AS NECESSARY IN ORDER TO CLEAR THE EXPANSION JOINT SEAL COVER PLATE ASSEMBLY IN THE CONCRETE MEDIAN AT THE END BENTS.

| BILL OF MATERIAL | | | | | |
|--|-----|------|------|---------|-----------|
| FOR MEDIAN BARRIER ONLY | | | | | |
| BAR NO. | NO. | SIZE | TYPE | LENGTH | WEIGHT |
| *B1 | 24 | #5 | STR | 24'-8" | 617 |
| *B2 | 24 | #5 | STR | 12'-1" | 302 |
| *B3 | 24 | #5 | STR | 21'-1" | 528 |
| *B4 | 48 | #5 | STR | 22'-4" | 1118 |
| *B5 | 24 | #5 | STR | 12'-11" | 323 |
| *S1 | 226 | #5 | 1 | 7'-10" | 1846 |
| *S2 | 452 | #5 | 2 | 1'-10" | 864 |
| *S3 | 4 | #5 | 1 | 6'-0" | 25 |
| * EPOXY COATED REINFORCING STEEL | | | | | 5623 LB |
| CLASS AA CONCRETE | | | | | 40.5 CY |
| CONCRETE MEDIAN BARRIER | | | | | 227.97 LF |
| BAR TYPES | | | | | |
| <p>Diagram 1: A U-shaped bar with a top width of 8 1/2", a height of 2'-5 3/4", and a 2 1/16" radius. It has a 1'-1 1/2" section with #5 S1 bars and a 7" section with #5 S3 bars. The bottom width is 6".</p> <p>Diagram 2: A horizontal bar with a total length of 11" and 5/2" sections at each end. It has a 1'-1 3/16" section with #5 S1 bars, a 7 1/4" section with #5 S3 bars, a 2'-2 3/8" section with #5 S1 bars, and a 1'-2 1/2" section with #5 S3 bars.</p> | | | | | |
| ALL BAR DIMENSIONS ARE OUT TO OUT | | | | | |

PROJECT NO. I-5987B
ROBESON COUNTY
 STATION: 803+15.00 -L-



STATE OF NORTH CAROLINA
 DEPARTMENT OF TRANSPORTATION
 RALEIGH
 SUPERSTRUCTURE
**CONCRETE
 MEDIAN BARRIER**

| REVISIONS | | | | | | SHEET NO. |
|-----------|-----|-------|-----|-----|-------|--------------|
| NO. | BY: | DATE: | NO. | BY: | DATE: | S9-36 |
| 1 | | | 3 | | | TOTAL SHEETS |
| 2 | | | 4 | | | 69 |

DOCUMENT NOT CONSIDERED FINAL
 UNLESS ALL SIGNATURES COMPLETED