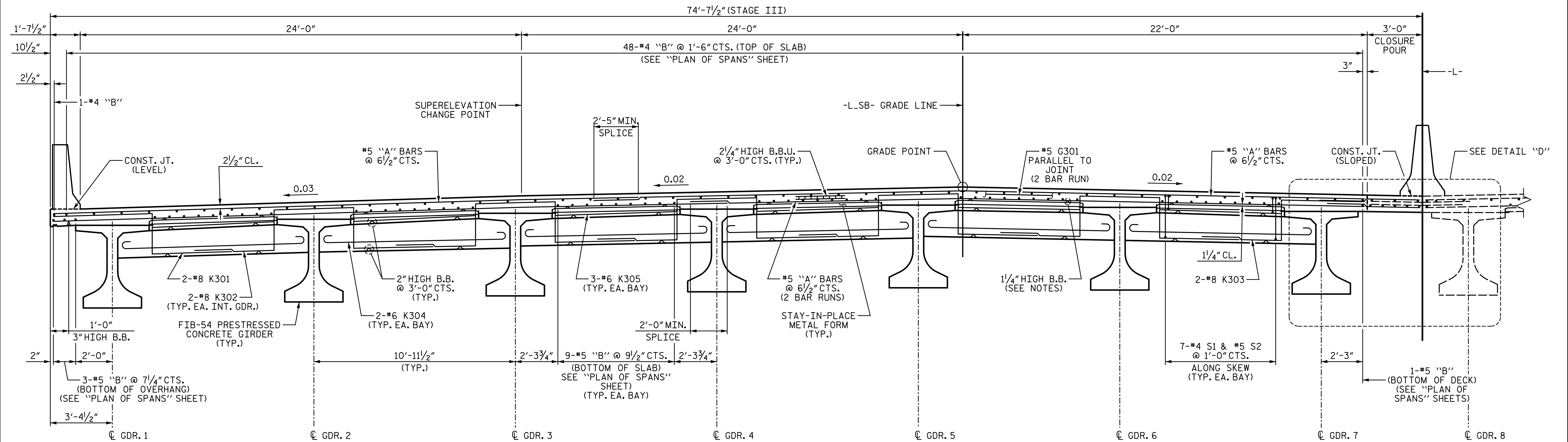
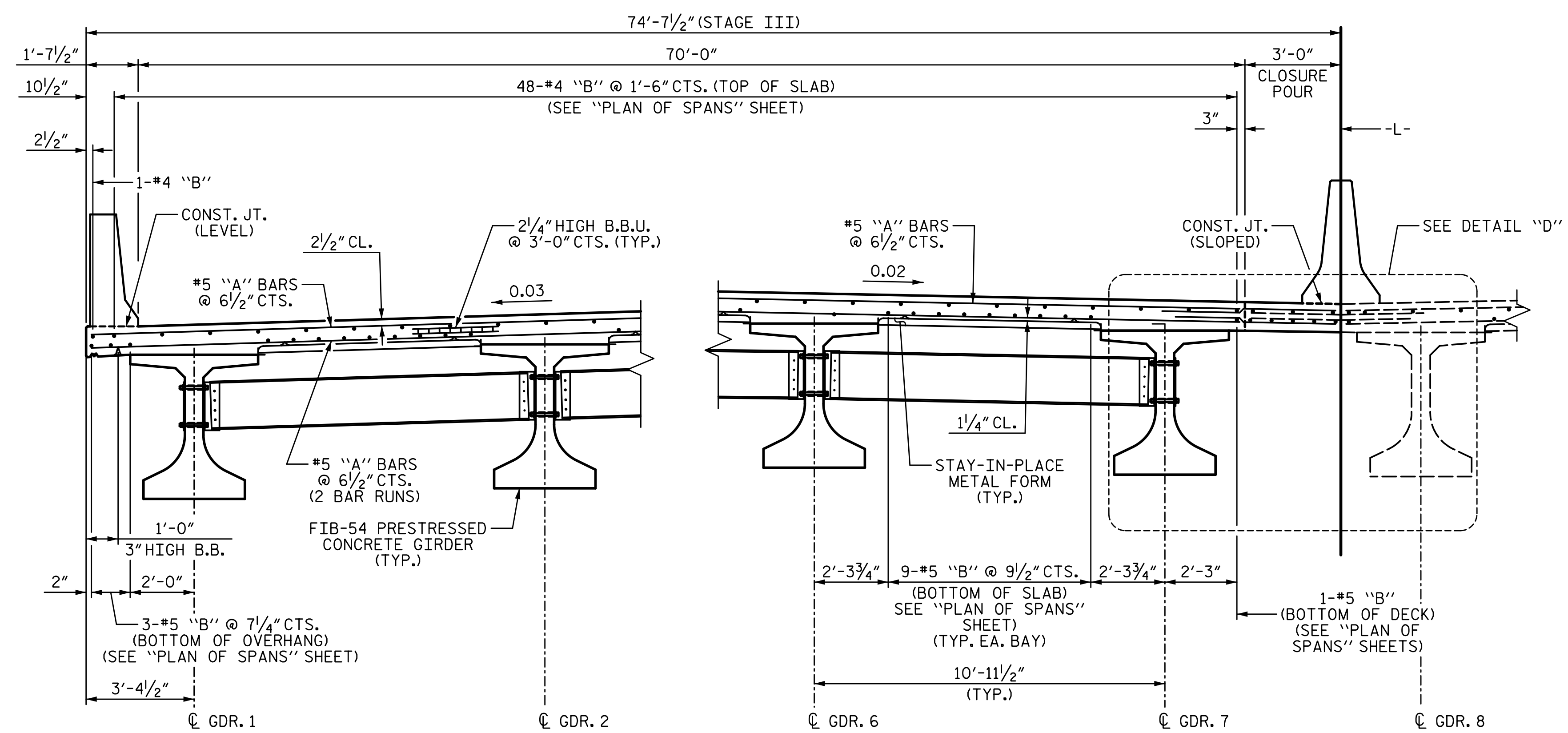


3/18/2022 11:06:17 AM G:\Projects\2020\Division 6 (Mott Mac - NV5)\I-5987B\Structures\Site 9 (L over Little Marsh Swamp)\Drawings\Final\I5987B\_SMU\_TS\_770164.dgn



**TYPICAL SECTION**  
(SHOWING END BENT DIAPHRAGMS)



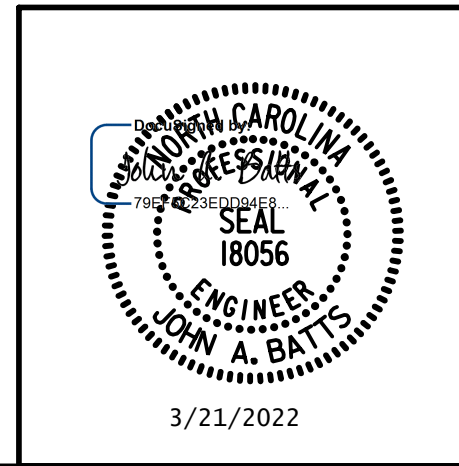
**PARTIAL TYPICAL SECTION**  
(SHOWING INTERMEDIATE DIAPHRAGMS)

PROJECT NO. I-5987B  
ROBESON COUNTY  
 STATION: 803+15.00 -L-  
 SHEET 6 OF 8

STATE OF NORTH CAROLINA  
 DEPARTMENT OF TRANSPORTATION  
 RALEIGH  
 SUPERSTRUCTURE

**TYPICAL SECTION**

STAGE III



**W WGI**  
 5640 Dillard Drive, Suite 200  
 Cary, NC 27518  
 LICENSURE NO. C-4434

DRAWN BY: T. BANKOVICH DATE: 3-22  
 CHECKED BY: J.A. BATTS DATE: 3-22  
 DESIGN ENGINEER OF RECORD: J.A. BATTS DATE: 3-22

REVISIONS						SHEET NO.
NO.	BY:	DATE:	NO.	BY:	DATE:	S9-12
1			3			TOTAL SHEETS
2			4			69

**DOCUMENT NOT CONSIDERED FINAL  
 UNLESS ALL SIGNATURES COMPLETED**