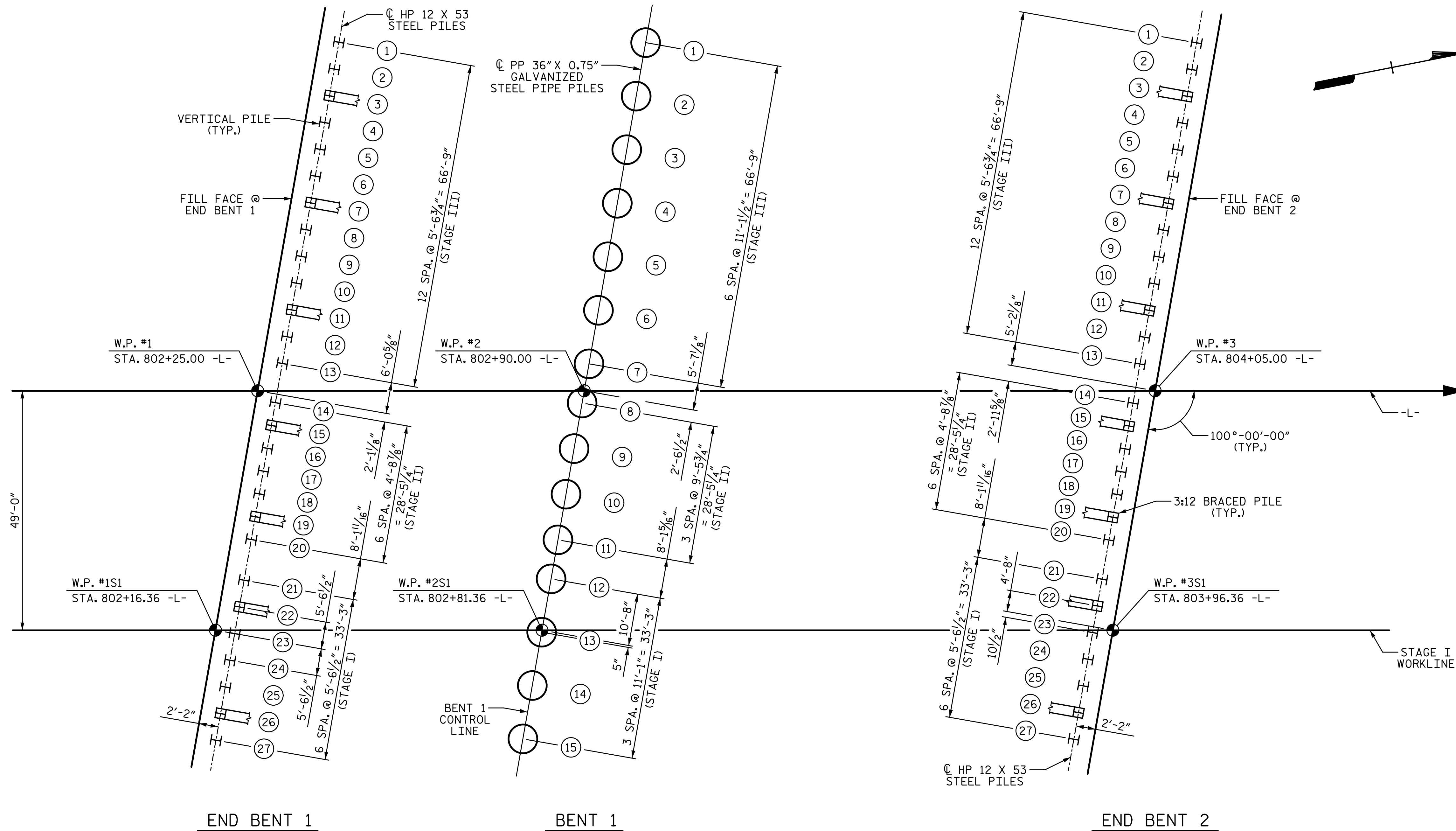


3/18/2022 11:06:11 AM G:\Projects\2020\Division 6 (Mott) Mac - NV5\I-5987B\Structures\Site 9 (L over Little Marsh Swamp)\Drawings\Final\I5987B_SMU_FL_770164.dgn



FOUNDATION LAYOUT

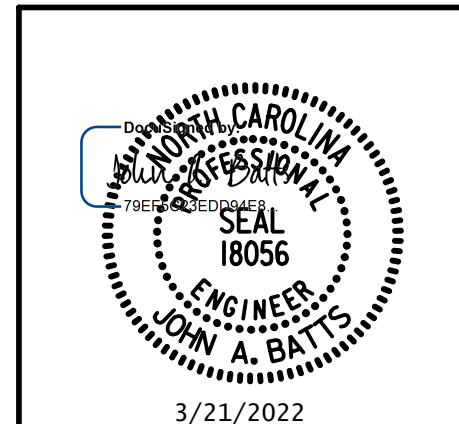
(DIMENSIONS LOCATING PILES ARE SHOWN TO THE CENTERLINE OF PILES AT BOTTOM OF CAP)

⊙ INDICATES PILE NUMBER

FOUNDATION NOTES:

FOR PILES, SEE PILES PROVISION AND SECTION 450 OF THE STANDARD SPECIFICATIONS.
 IT HAS BEEN ESTIMATED THAT A HAMMER WITH AN EQUIVALENT RATED ENERGY IN THE RANGE OF 65 TO 150 KIP-FT PER BLOW WILL BE REQUIRED TO DRIVE PILES AT BENT 1. THIS ESTIMATED ENERGY RANGE DOES NOT RELEASE THE CONTRACTOR FROM PROVIDING DRIVING EQUIPMENT IN ACCORDANCE WITH SUBARTICLE 450-3(D)(2) OF THE STANDARD SPECIFICATIONS.

DRAWN BY: T. BANKOVICH	DATE: 3-22
CHECKED BY: J.A. BATTS	DATE: 3-22
DESIGN ENGINEER OF RECORD: J.A. BATTS	DATE: 3-22



PROJECT NO. I-5987B
ROBESON COUNTY
 STATION: 803+15.00 -L-

SHEET 2 OF 5

STATE OF NORTH CAROLINA
 DEPARTMENT OF TRANSPORTATION
 RALEIGH

GENERAL DRAWING
 FOR BRIDGE ON I-95
 OVER LITTLE MARSH SWAMP
 BETWEEN SR 1726 AND SR 1723

REVISIONS						SHEET NO.
NO.	BY:	DATE:	NO.	BY:	DATE:	S9-2
1			3			TOTAL SHEETS
2			4			69

**DOCUMENT NOT CONSIDERED FINAL
 UNLESS ALL SIGNATURES COMPLETED**