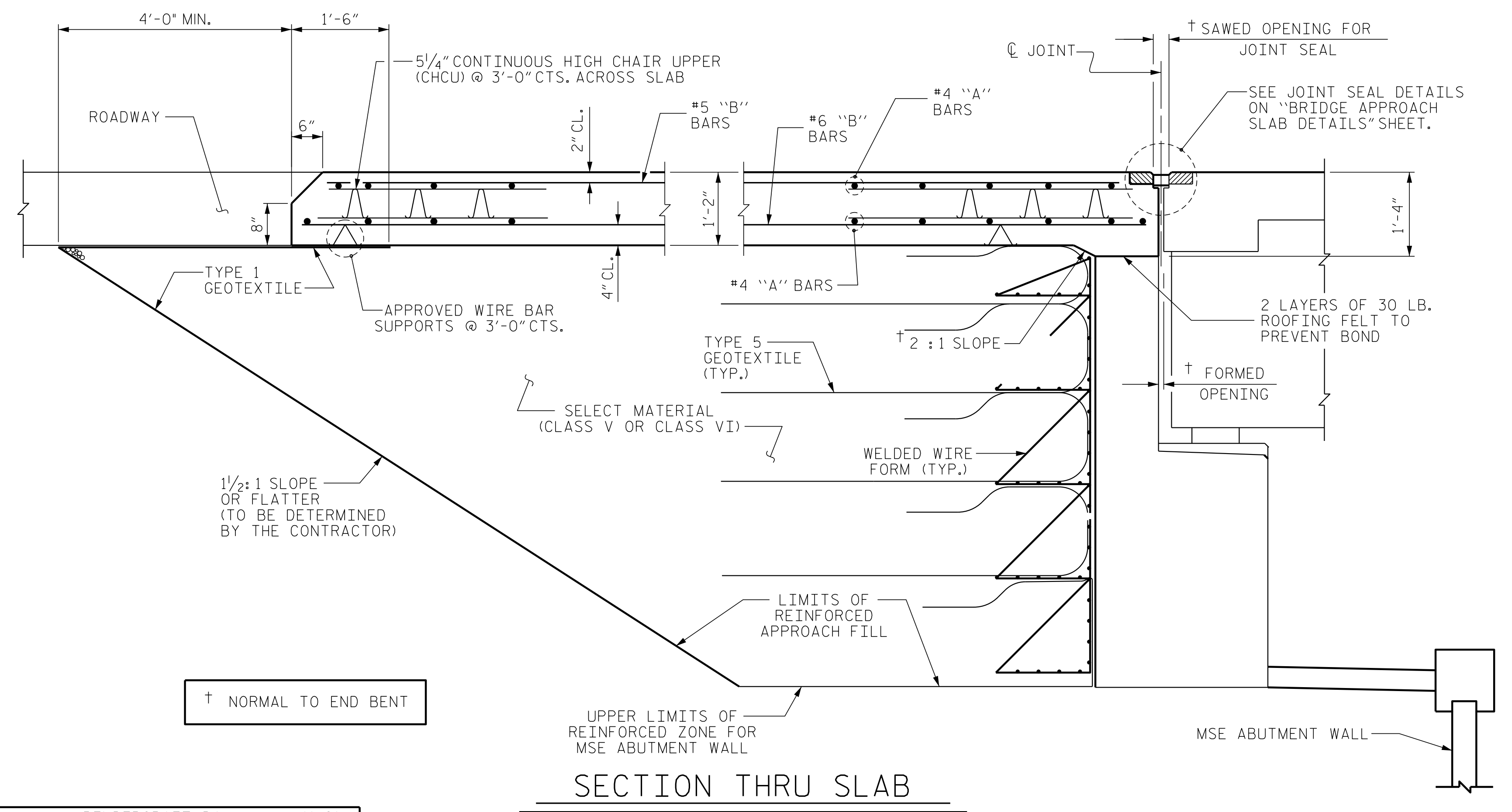


PLAN @ END BENT 1 PLAN @ END BENT 2
DIMENSIONS SHOWN ARE TYPICAL FOR BOTH APPROACH SLABS



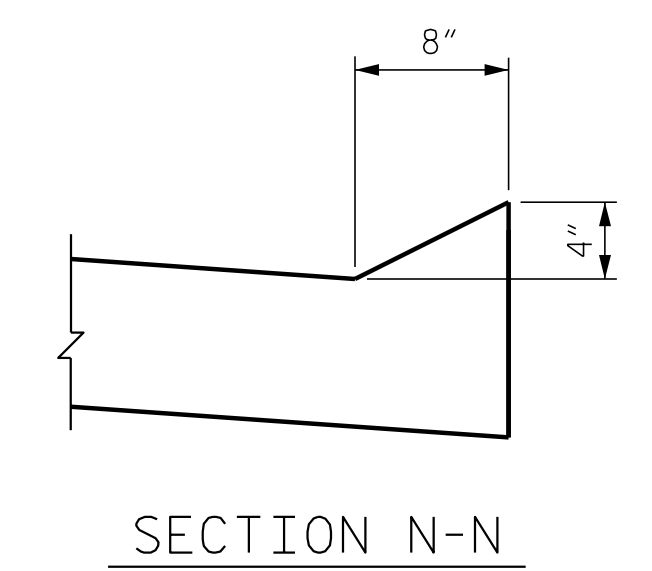
SECTION THRU SLAB
(SPECIAL BRIDGE APPROACH FILL)

NOTES

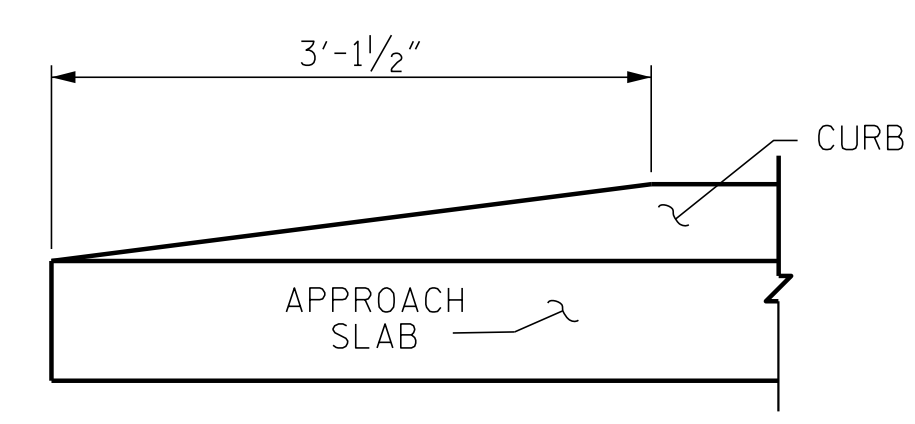
- APPROACH SLAB SHALL NOT BE CONSTRUCTED PRIOR TO COMPLETION OF THE BRIDGE DECK.
- FOR TEMPORARY GEOTEXTILE WALL INCLUDING GEOTEXTILE, WELDED WIRE FORM, MSE WALL REINFORCEMENT AND SELECT MATERIAL, SEE ROADWAY PLANS.
- GEOTEXTILE (TYPE 1 OR TYPE 5) SHALL BE IN ACCORDANCE WITH THE STANDARD SPECIFICATIONS SECTION 1056.
- SELECT MATERIAL BACKFILL (CLASS V OR CLASS VI) SHALL BE IN ACCORDANCE WITH STANDARD SPECIFICATIONS SECTION 1016.
- SELECT MATERIAL BACKFILL IS TO BE CONTINUOUS ALONG FILL FACE OF BACKWALL FROM OUTSIDE EDGE TO OUTSIDE EDGE OF APPROACH SLAB.
- THE JOINT SHALL BE SAWED PRIOR TO THE CASTING OF THE BARRIER RAIL.
- AREA BETWEEN THE WINGWALL AND APPROACH SLAB SHALL BE GRADED TO DRAIN THE WATER AWAY FROM THE FILL FACE OF THE BRIDGE AND SHALL BE PAVED. SEE ROADWAY PLANS.
- WITH FOAM JOINT SEAL
- FOR FOAM JOINT SEALS, SEE SPECIAL PROVISIONS.
- THE NOMINAL UNCOMPRESSED SEAL WIDTH OF THE FOAM JOINT SEAL SHALL BE 2".
- FOR ELASTOMERIC CONCRETE, SEE SPECIAL PROVISIONS.

BILL OF MATERIAL					
APPROACH SLAB AT END BENT 1					
BAR	NO.	SIZE	TYPE	LENGTH	WEIGHT
*A1	15	#4	STR	37'-4"	374
A2	16	#4	STR	37'-4"	399
*B1	67	#5	STR	13'-6"	943
B2	67	#6	STR	14'-7"	1468
REINFORCING STEEL					LBS. 1867
*EPOXY COATED REINFORCING STEEL					LBS. 1317
CLASS AA CONCRETE					C. Y. 21.9
APPROACH SLAB AT END BENT 2					
BAR	NO.	SIZE	TYPE	LENGTH	WEIGHT
*A1	15	#4	STR	37'-4"	374
A2	16	#4	STR	37'-4"	399
*B1	67	#5	STR	13'-6"	943
B2	67	#6	STR	14'-7"	1468
REINFORCING STEEL					LBS. 1867
*EPOXY COATED REINFORCING STEEL					LBS. 1317
CLASS AA CONCRETE					C. Y. 21.9

SPLICE LENGTHS		
BAR SIZE	EPOXY COATED	UNCOATED
#4	1'-11"	1'-7"
#5	2'-5"	2'-0"
#6	3'-7"	2'-5"



SECTION N-N



END OF CURB WITHOUT SHOULDER BERM GUTTER
CURB DETAILS

PROJECT NO. I-5987B
ROBESON COUNTY
STATION: 30+28.11 -Y6-
SHEET 1 OF 2

ENGINEER OF RECORD
4/4/2022
NORTH CAROLINA PROFESSIONAL SEAL
37400
GREGORY M. GILLAND
ETHERILL ENGINEERING
1223 Jones Franklin Rd.
Raleigh, N.C. 27606
Bus: 919 851 8077
Fax: 919 851 8107
LICENSE NO. F-0377

REVISIONS					
NO.	BY:	DATE:	NO.	BY:	DATE:
1			3		
2			4		

SHEET NO. S8-27
TOTAL SHEETS 28

DRAWN BY: J. PENDERGRAFT/DAH DATE: 11-21
CHECKED BY: JAD/GMG DATE: 11-21

DOCUMENT NOT CONSIDERED FINAL
UNLESS ALL SIGNATURES COMPLETED

STD. NO. BAS2

P:\2020\20380\01_I-5987B_T95 Structures\DWG\401_001_15987B_SMU_AS_001.dgn
 4/4/2022 9:08:08 AM