

**NOTES**

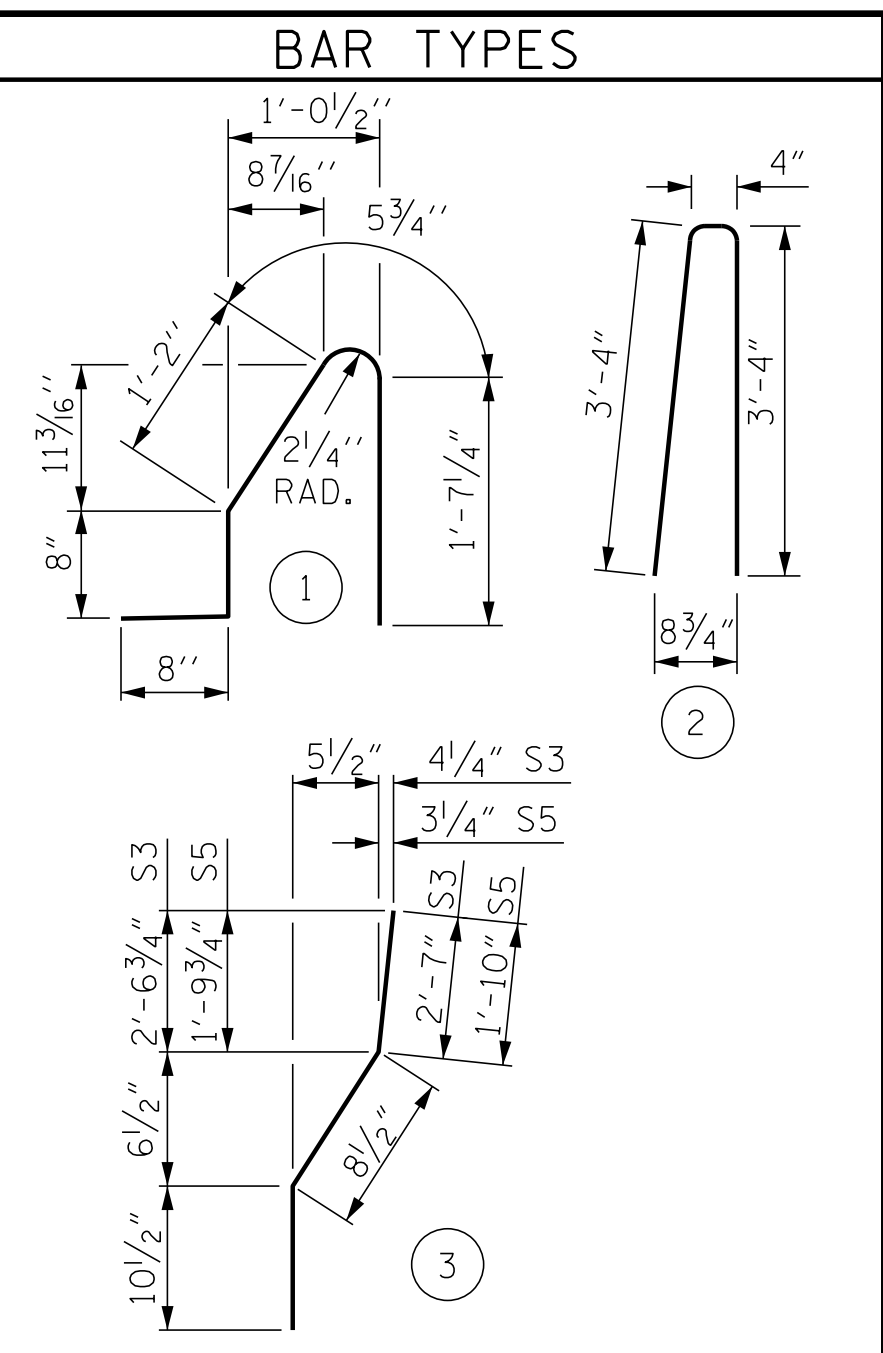
THE BARRIER RAIL IN EACH SPAN SHALL NOT BE CAST UNTIL ALL SLAB CONCRETE IN THAT SPAN HAS BEEN CAST AND HAS REACHED A MINIMUM COMPRESSIVE STRENGTH OF 3,000 PSI.

WHEN FOAM JOINT SEAL IS REQUIRED, THE JOINT IN THE DECK SHALL BE SAWSD PRIOR TO THE CASTING OF BARRIER RAIL.

ALL REINFORCING STEEL IN BARRIER RAILS SHALL BE EPOXY COATED.

THE #5 S3, S4, S5 AND S6 BARS SHALL BE INSTALLED, USING AN ADHESIVE ANCHORING SYSTEM, AFTER SAWING THE JOINT. THE YIELD LOAD FOR THE #5 S3, S4, S5 AND S6 BARS IS 18.6 KIPS. FIELD TESTING FOR THE ADHESIVE BONDING SYSTEM IS NOT REQUIRED.

GROOVED CONTRACTION JOINTS, 1/2" IN DEPTH, SHALL BE TOOLED IN ALL EXPOSED FACES OF THE BARRIER RAIL AND IN ACCORDANCE WITH ARTICLE 825-10(B) OF THE STANDARD SPECIFICATIONS. THE CONTRACTION JOINT SHALL BE LOCATED AT EACH THIRD POINT BETWEEN BARRIER RAIL EXPANSION JOINTS. ONLY ONE CONTRACTION JOINT IS REQUIRED AT MIDPOINT OF BARRIER RAIL SEGMENTS LESS THAN 20 FEET IN LENGTH AND NO CONTRACTION JOINTS ARE REQUIRED FOR THOSE SEGMENTS LESS THAN 10 FEET IN LENGTH.

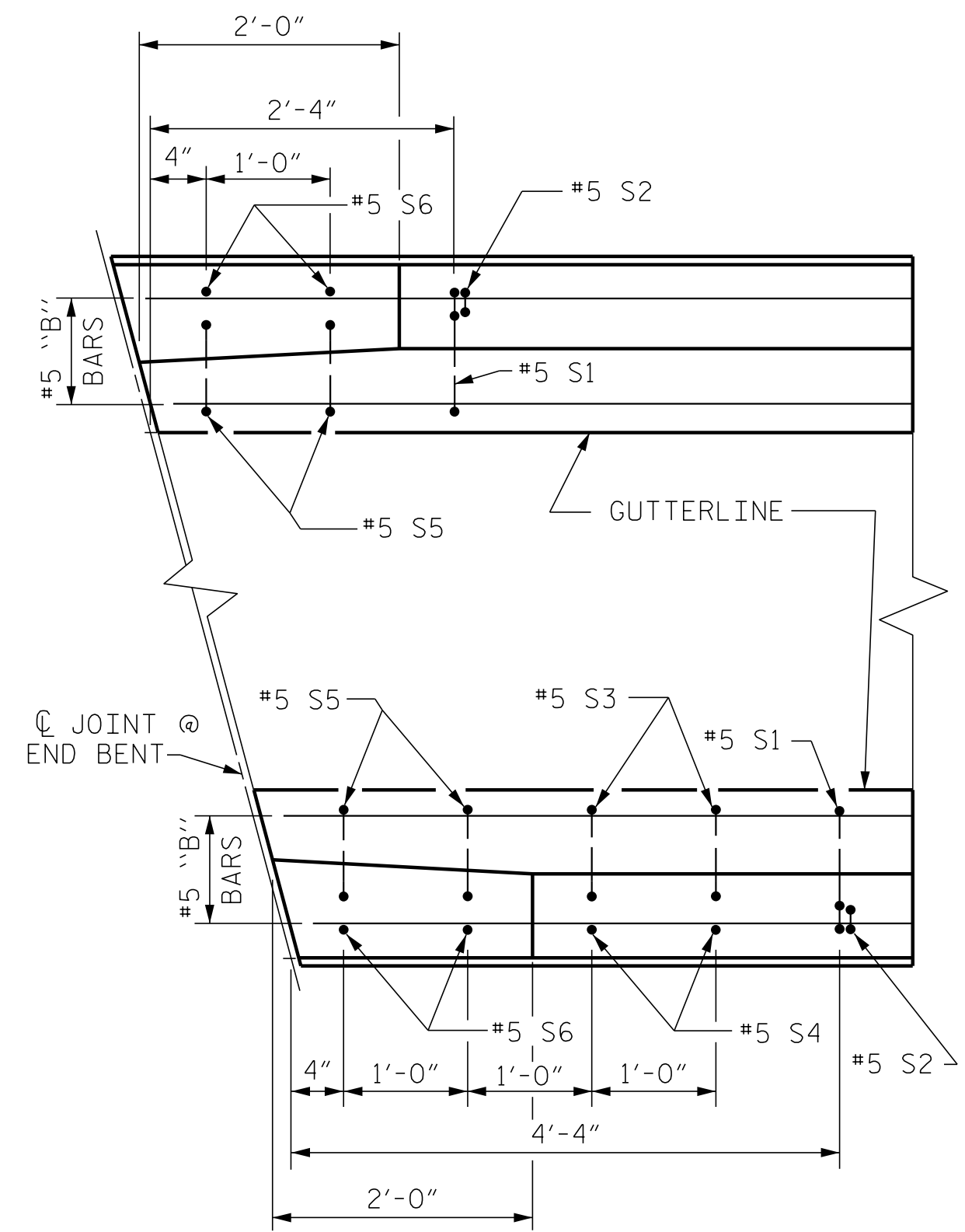


ALL BAR DIMENSIONS ARE OUT TO OUT

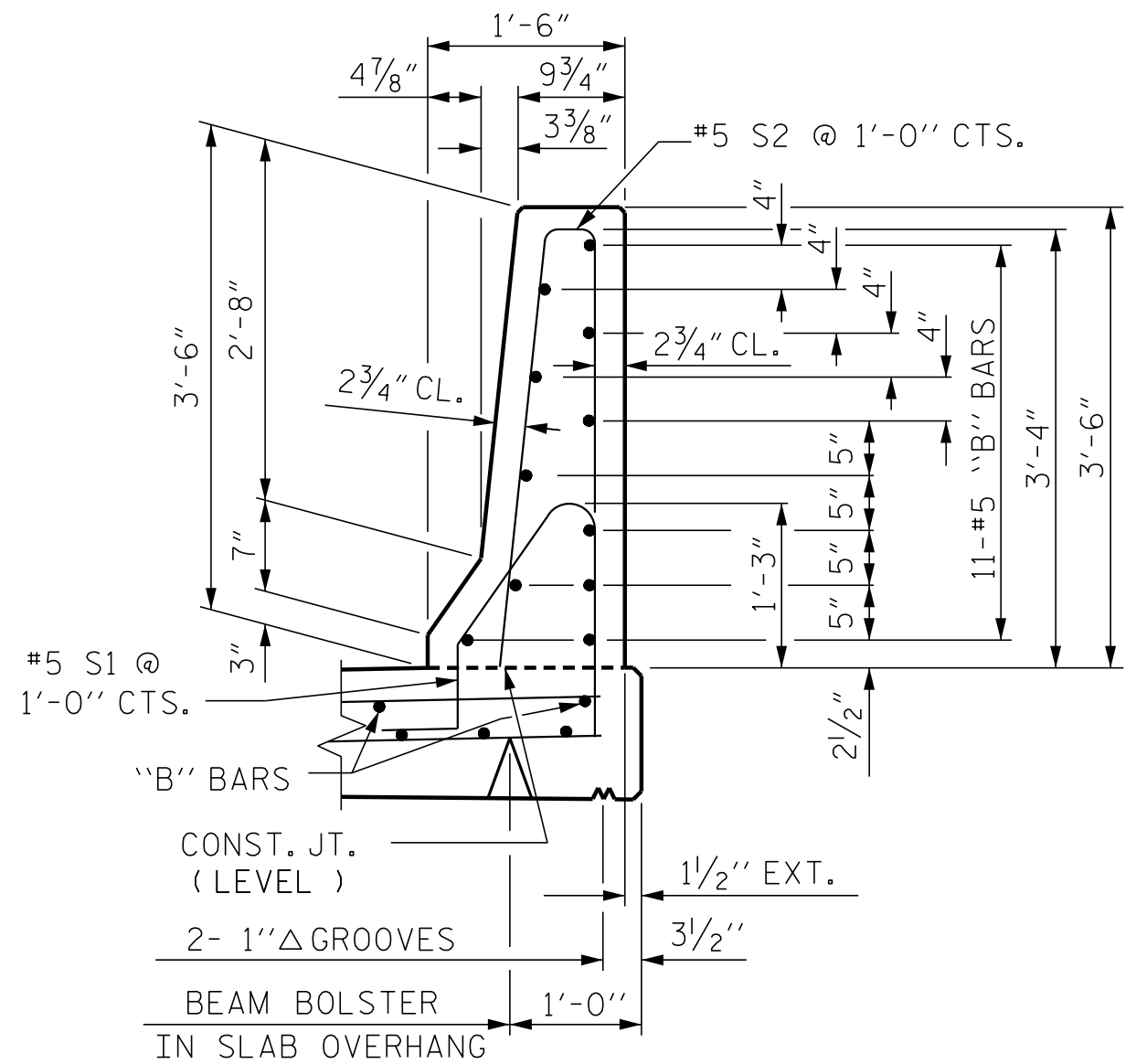
**BILL OF MATERIAL**

FOR CONCRETE BARRIER RAIL ONLY

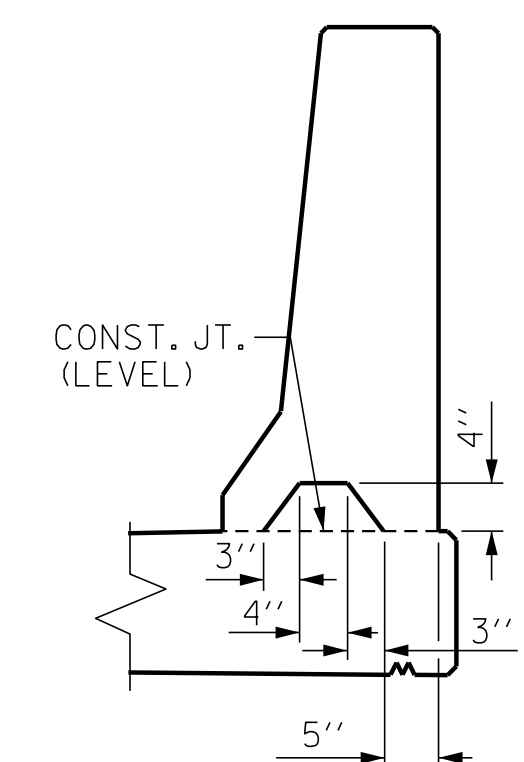
BAR	NO.	SIZE	TYPE	LENGTH	WEIGHT
* B1	88	#5	STR	12'-9"	1,170
* B2	132	#5	STR	23'-7"	3,247
* S1	366	#5	1	4'-7"	1,750
* S2	366	#5	2	7'-0"	2,672
* S3	4	#5	3	4'-2"	17
* S4	4	#5	STR	4'-0"	17
* S5	8	#5	3	3'-5"	29
* S6	8	#5	STR	3'-3"	27
* EPOXY COATED REINFORCING STEEL					8,929 LBS.
CLASS AA CONCRETE					51.3 CU. YDS.
CONCRETE BARRIER RAIL					377.76 LIN. FT.



**PLAN**

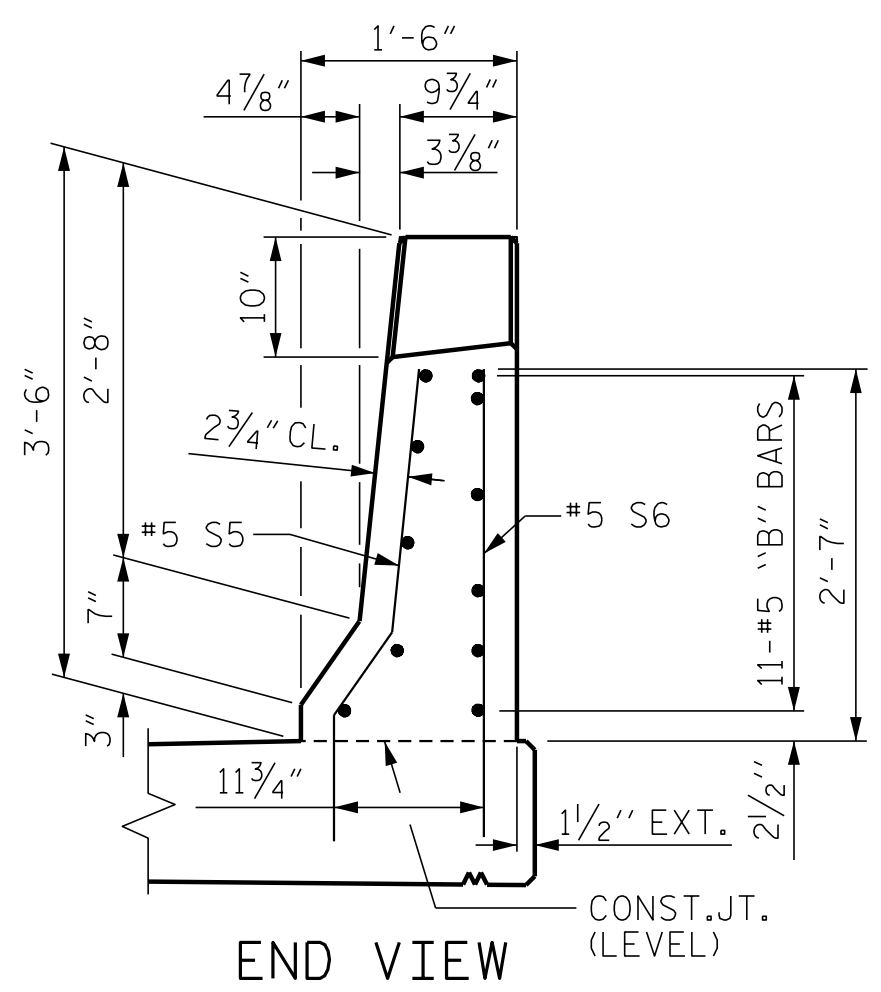


**SECTION THRU RAIL**

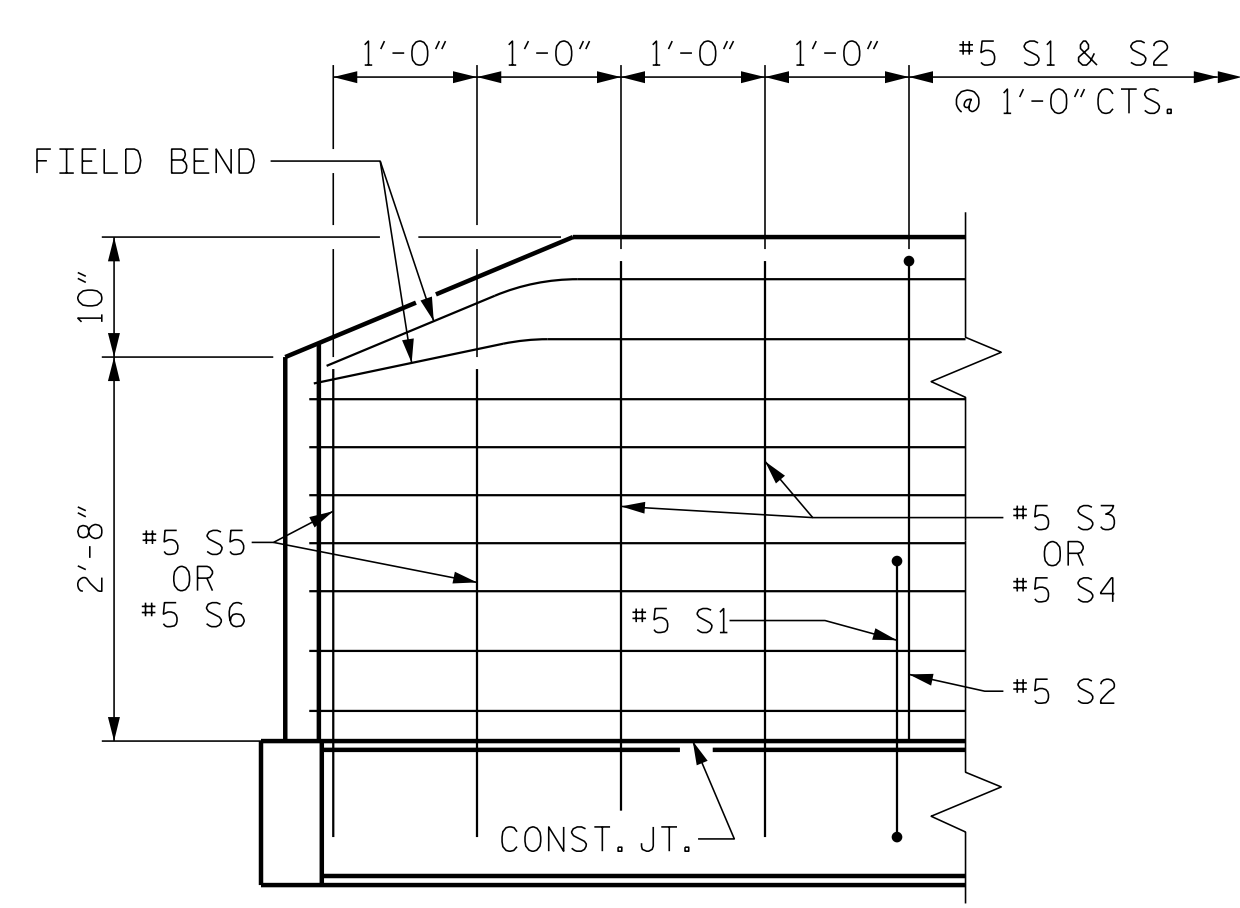


**SECTION S-S**

AT DAM IN OPEN JOINT (THIS IS TO BE USED ONLY WHEN SLIP FORM IS USED)

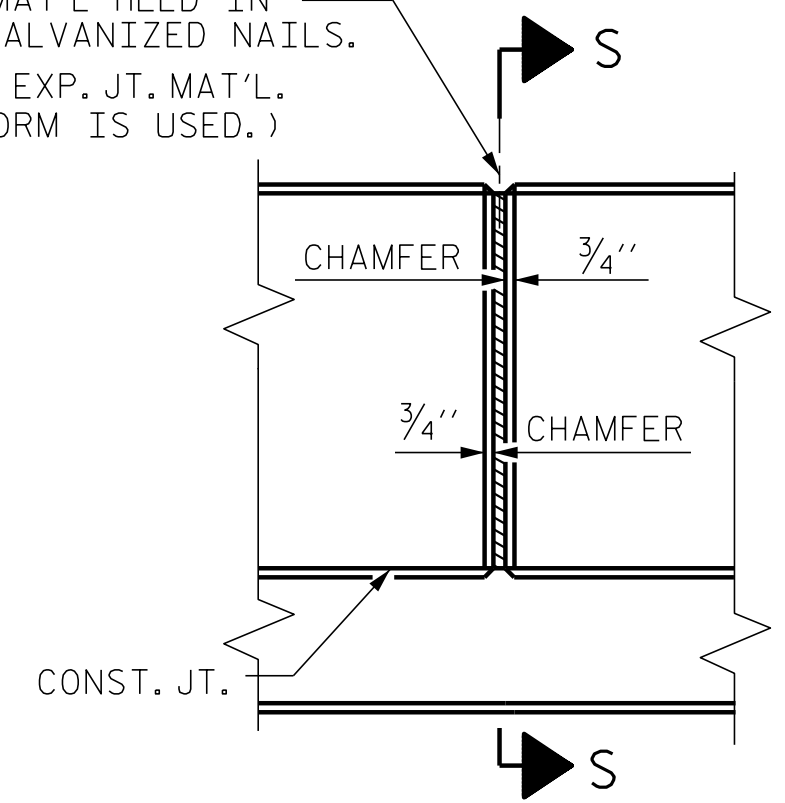


**END VIEW**



**SIDE VIEW**

1/2" EXP. JT. MAT'L HELD IN PLACE WITH GALVANIZED NAILS. (NOTE: OMIT EXP. JT. MAT'L WHEN SLIP FORM IS USED.)

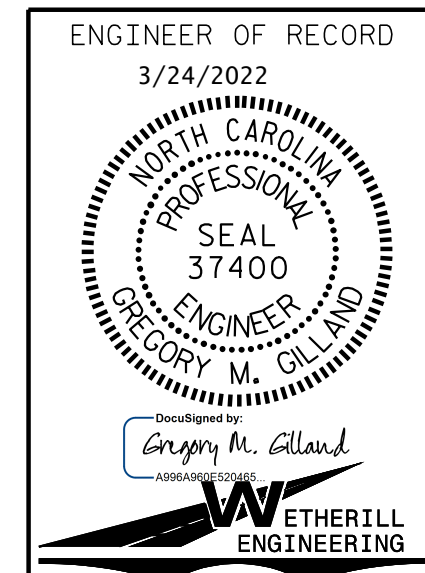


**ELEVATION AT EXPANSION JOINTS BARRIER RAIL DETAILS**

**END OF RAIL DETAILS**

FOR ADHESIVE ANCHORING AT SAWSD JOINTS

PROJECT NO. I-5987B  
ROBESON COUNTY  
 STATION: 30+28.11 -Y6-  
 SHEET 2 OF 2



1223 Jones Franklin Rd.  
 Raleigh, N.C. 27606  
 Bus: 919 851 8077  
 Fax: 919 851 8107  
 LICENSE NO. F-0377

STATE OF NORTH CAROLINA  
 DEPARTMENT OF TRANSPORTATION  
 RALEIGH  
**STANDARD CONCRETE BARRIER RAIL**

REVISIONS						SHEET NO.
NO.	BY:	DATE:	NO.	BY:	DATE:	S8-15
1			3			TOTAL SHEETS
2			4			28

DOCUMENT NOT CONSIDERED FINAL UNLESS ALL SIGNATURES COMPLETED

PA-2020-20380.01-I-5987B-T95 Structures DGM401\_001\_I-5987B\_SBU\_CBR\_001.dgn  
 3/8/2022 3:29:49 PM

ASSEMBLED BY : D. HODGE	DATE : 4/21
CHECKED BY : J. DILWORTH	DATE : 6/21
DRAWN BY : ARB 5/87	REV. 7/12 MAA/GM
CHECKED BY : SJD 9/87	REV. 6/13 MAA/GM
	REV. 12/17 MAA/THC