

3/21/2022 9:09:04 AM G:\Projects\2020\Division 6 (Mott) Mac - NV5\I-5987B\Structures\Site 7 (Y1B over L)\Drawings\Final\I5987B\_SMU\_AS.dgn

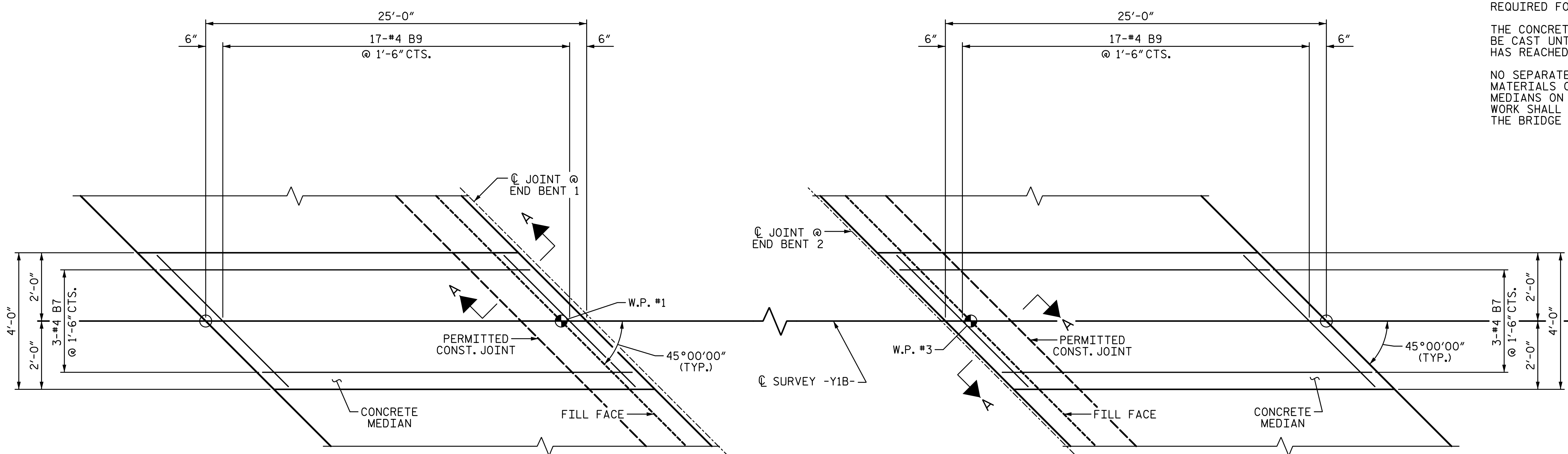
**NOTES:**

ALL REINFORCING STEEL IN CONCRETE MEDIANS SHALL BE EPOXY COATED.

GROOVED CONTRACTION JOINTS, 1/2" IN DEPTH SHALL BE TOOLED IN ALL EXPOSED FACES OF THE CONCRETE MEDIAN IN ACCORDANCE WITH ARTICLE 825-10(B) OF THE STANDARD SPECIFICATIONS. THE CONTRACTION JOINTS SHALL BE LOCATED AT A SPACING OF 8 FT. TO 10 FT. BETWEEN EXPANSION JOINTS. NO CONTRACTION JOINTS WILL BE REQUIRED FOR SEGMENTS LESS THAN 10 FEET IN LENGTH.

THE CONCRETE MEDIAN ON EACH APPROACH SLAB SHALL NOT BE CAST UNTIL ITS APPROACH SLAB HAS BEEN CAST AND HAS REACHED A MINIMUM COMPRESSIVE STRENGTH OF 3000 PSI.

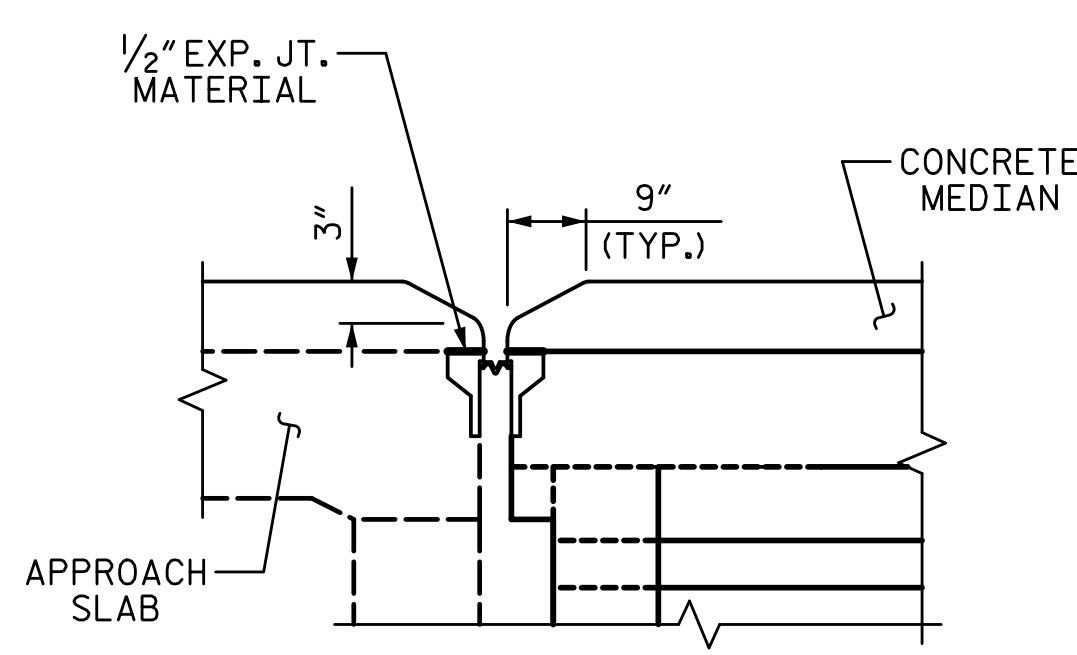
NO SEPARATE MEASUREMENT OR PAYMENT WILL BE MADE FOR MATERIALS OR LABOR REQUIRED TO CONSTRUCT THE CONCRETE MEDIANS ON THE APPROACH SLABS. THE ENTIRE COST OF THIS WORK SHALL BE INCLUDED IN THE LUMP SUM BID PRICE FOR THE BRIDGE APPROACH SLABS.



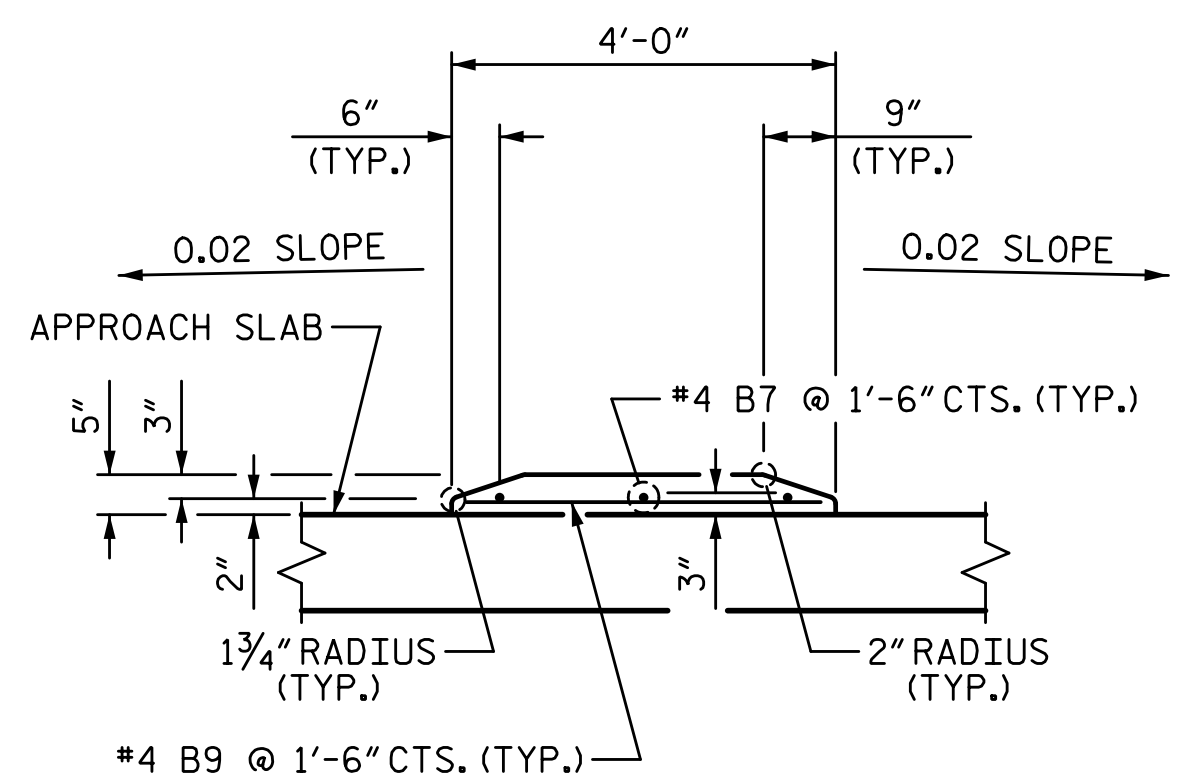
**PLAN OF CONCRETE MEDIAN AT END BENT 1**

**PLAN OF CONCRETE MEDIAN AT END BENT 2**

BILL OF MATERIAL					
FOR TWO CONCRETE MEDIANS					
BAR	NO.	SIZE	TYPE	LENGTH	WEIGHT
*B7	6	#4	STR	24'-8"	99
*B9	34	#4	STR	5'-3"	119
* EPOXY COATED REINFORCING STEEL					218 LB
CLASS "AA" CONCRETE					2.8 CY



**SECTION A-A**



**REINFORCING STEEL DETAILS**

**CONCRETE MEDIAN DETAILS**

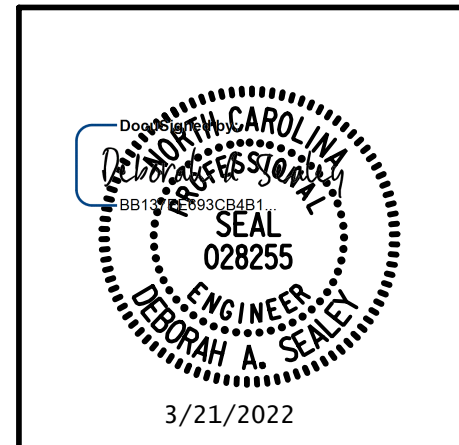
PROJECT NO. I-5987B  
ROBESON COUNTY  
 STATION: 29+51.04 -Y1B-

SHEET 3 OF 3

STATE OF NORTH CAROLINA  
 DEPARTMENT OF TRANSPORTATION  
 RALEIGH

**BRIDGE APPROACH SLAB  
 CONCRETE MEDIAN**

DRAWN BY: S.D. COOPER	DATE: 3-22
CHECKED BY: D.A. SEALEY	DATE: 3-22
DESIGN ENGINEER OF RECORD: D.A. SEALEY	DATE: 3-22



LICENSURE NO. C-4434

**DOCUMENT NOT CONSIDERED FINAL  
 UNLESS ALL SIGNATURES COMPLETED**

REVISIONS						SHEET NO.
NO.	BY:	DATE:	NO.	BY:	DATE:	S7-37
1			3			TOTAL SHEETS
2			4			37