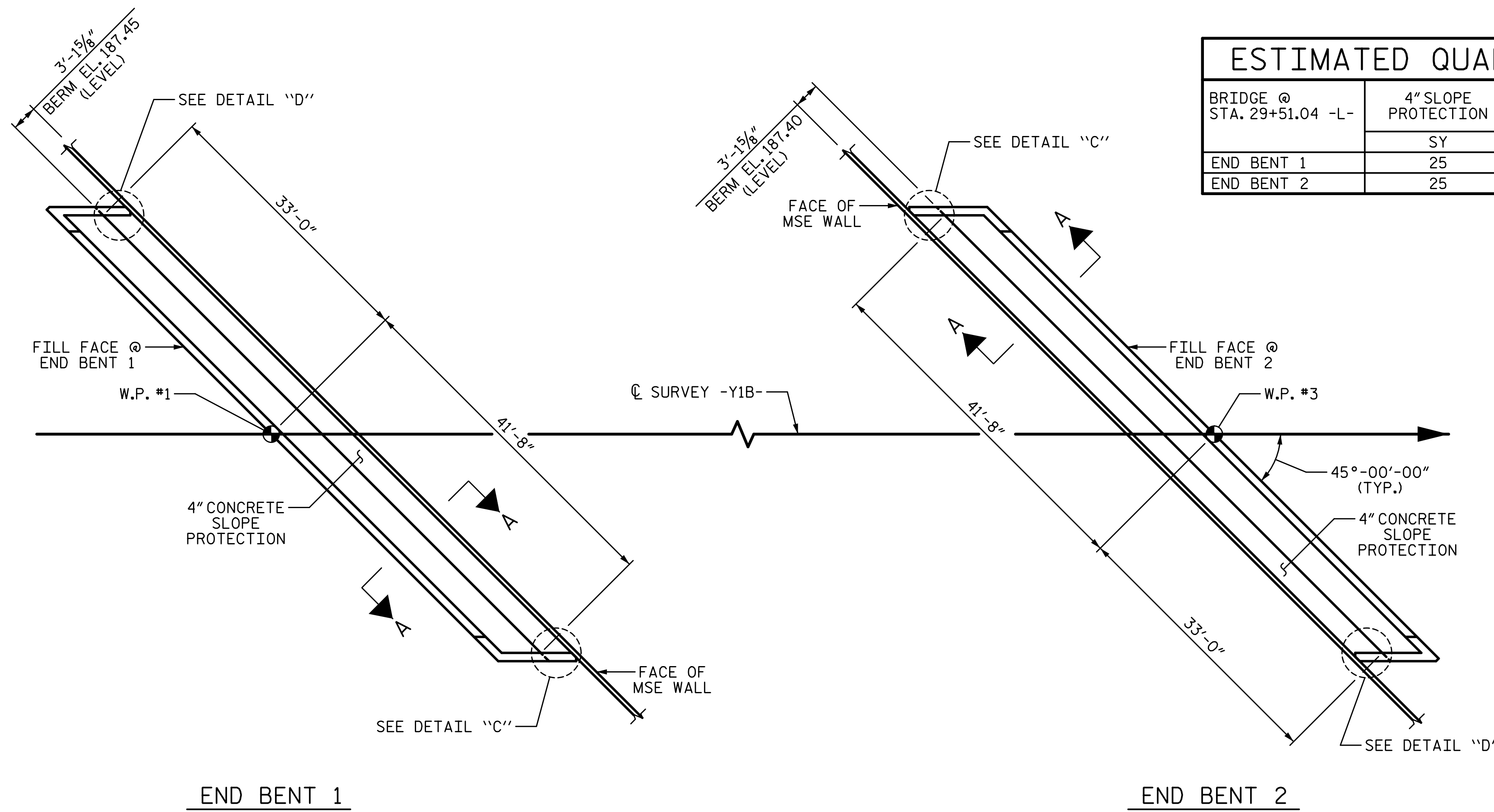


3/21/2022 9:09:02 AM G:\Projects\2020\Division 6 (Mott) Mac - NV5\I-5987B\Structures\Site 7 (Y1B over L)\Drawings\Final\I5987B\_SMU\_SP.dgn

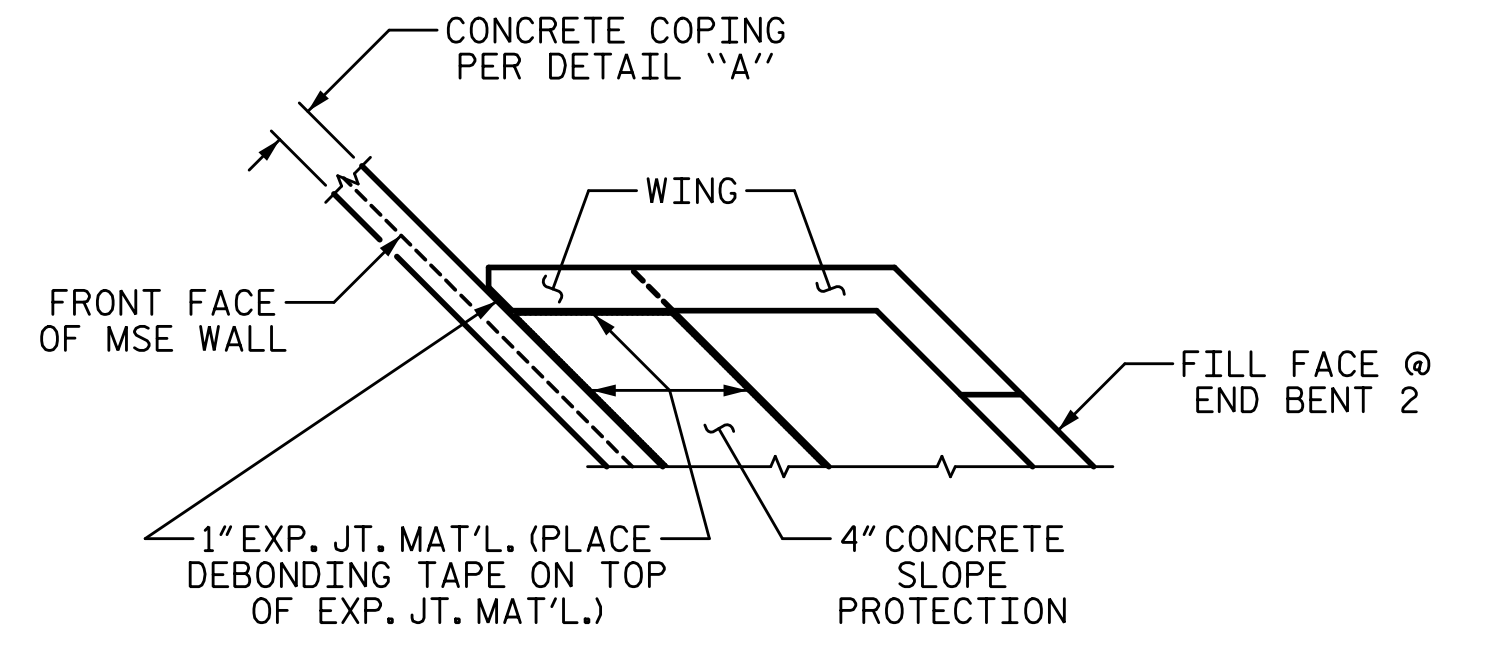


ESTIMATED QUANTITIES		
BRIDGE @ STA. 29+51.04 -L-	4" SLOPE PROTECTION	* WELDED WIRE FABRIC 60" WIDE
	SY	APPROX. LF
END BENT 1	25	45
END BENT 2	25	45

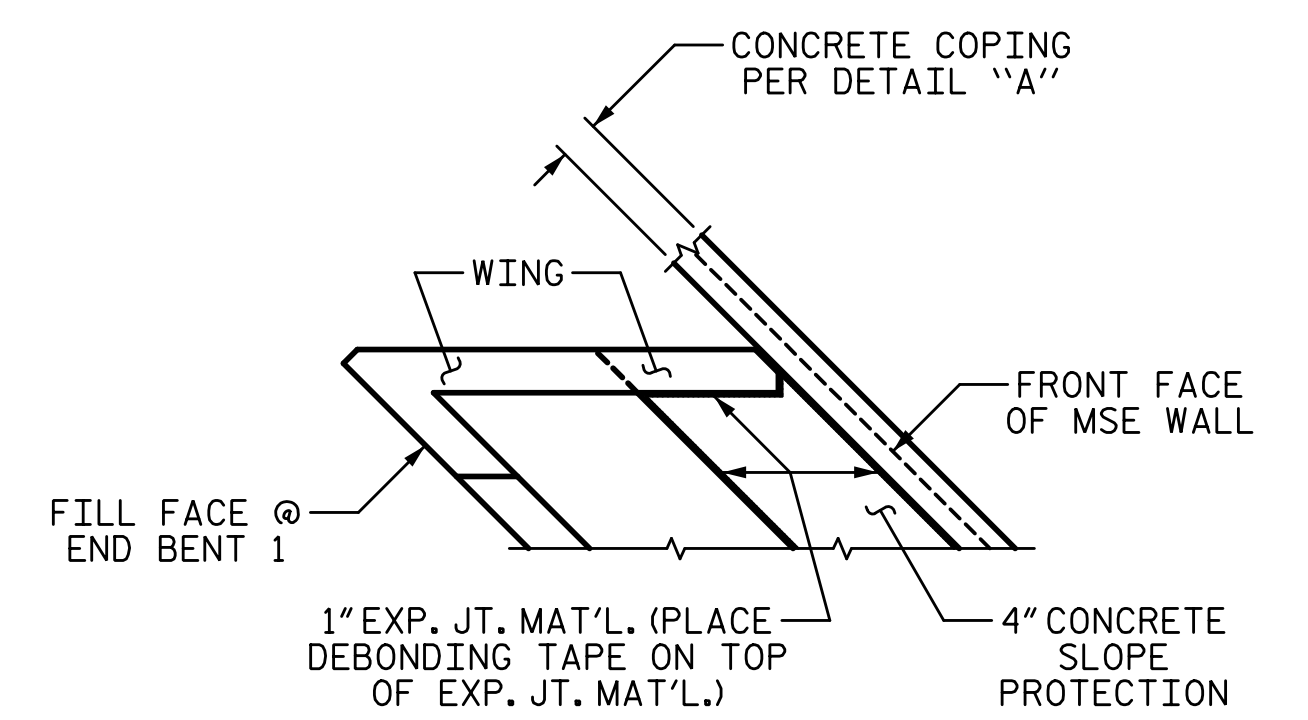
**NOTES:**

SLOPE PROTECTION SHALL CONSIST OF 4" POUR-IN-PLACE CONCRETE PAVING AS SHOWN IN THE DETAILS ON THIS SHEET. CONCRETE SHALL BE CLASS "B". THE CONCRETE SURFACE SHALL BE FLOATED WITH A WOODEN FLOAT AND FINISHED. WELDED WIRE FABRIC REINFORCING SHALL BE 6 X 6 - W1.4 X W1.4. THE COST OF THE WELDED WIRE FABRIC SHALL BE INCLUDED IN THE CONTRACT UNIT PRICE BID PER SQUARE YARD OF SLOPE PROTECTION.

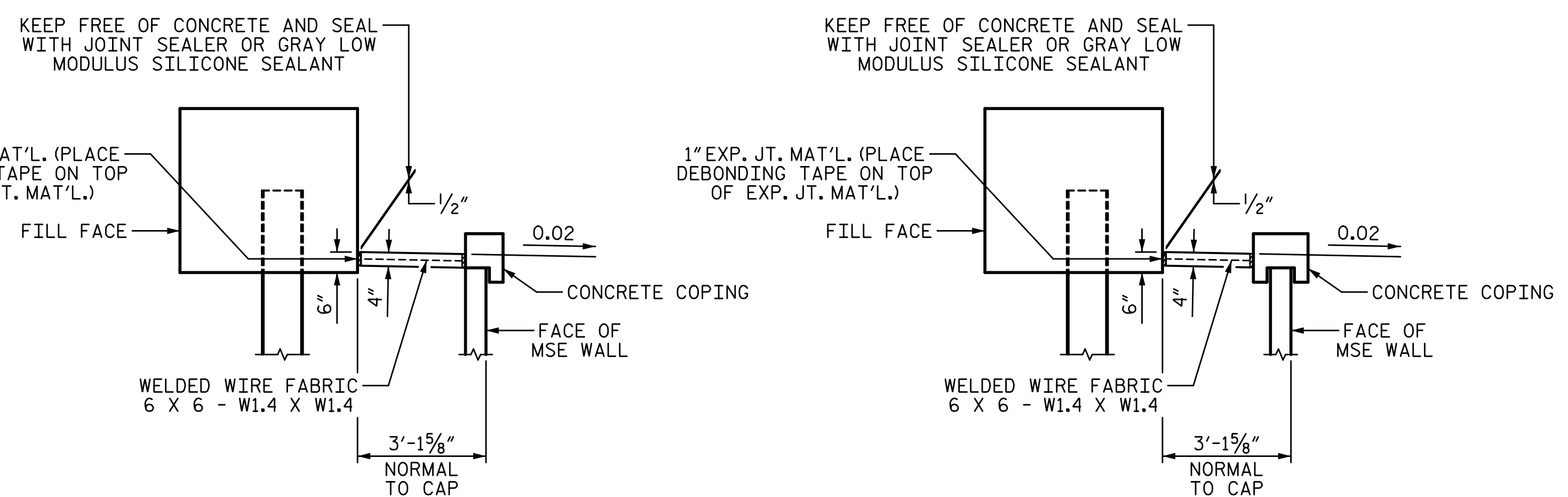
THE SLOPE PROTECTION IS DETAILED TO FIT WITH THE MSE WALL COPING DETAIL A. IF MSE WALL COPING DETAIL B IS USED, SLOPE PROTECTION SHALL BE ADJUSTED TO FIT. COORDINATE WITH THE MSE WALL FABRICATION FOR ACTUAL WALL THICKNESS AND COPING TO BE USED. ADJUST SLOPE PROTECTION QUANTITIES AS NECESSARY TO FIT COPING USED.



**DETAIL "C"**  
END BENT 2 SHOWN, END BENT 1 SIMILAR



**DETAIL "D"**  
END BENT 1 SHOWN, END BENT 2 SIMILAR

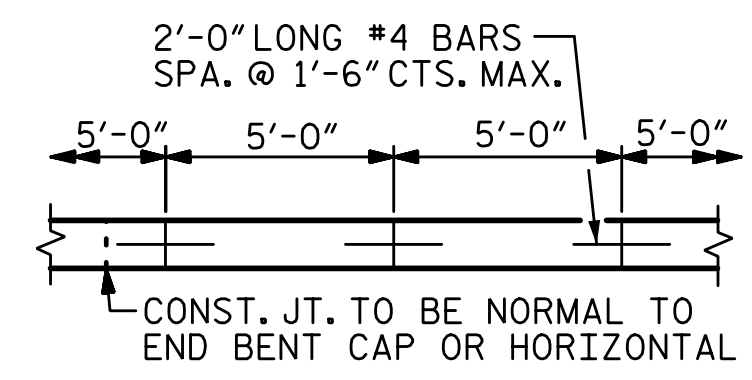


**DETAIL "A"**

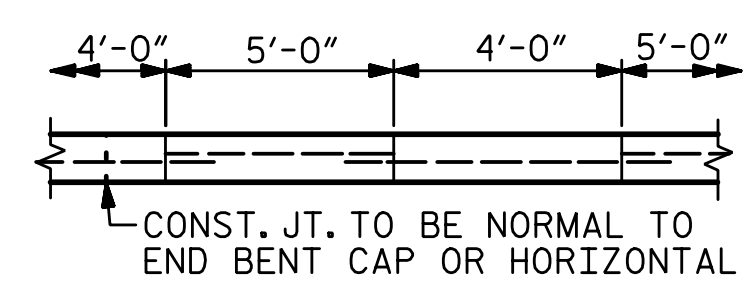
**DETAIL "B"**

**COPING DETAILS**

THE CONTRACTOR HAS THE OPTION OF USING COPING IN DETAILS "A" OR "B"



**POURING DETAIL**

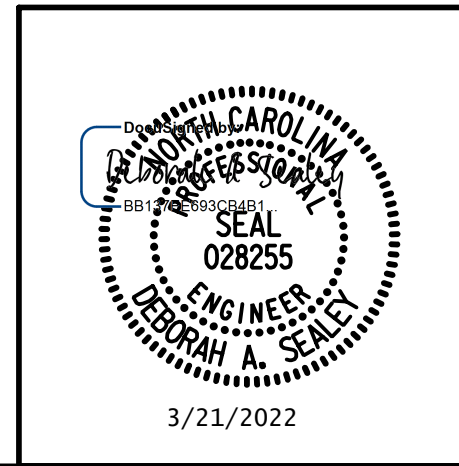


**OPTIONAL POURING DETAIL**

PROJECT NO. I-5987B  
ROBESON COUNTY  
STATION: 29+51.04 -Y1B-

STATE OF NORTH CAROLINA  
DEPARTMENT OF TRANSPORTATION  
RALEIGH

**CONCRETE SLOPE PROTECTION**



**W WGI**  
5640 Dillard Drive, Suite 200  
Cary, NC 27518  
LICENSURE NO. C-4434

REVISIONS						SHEET NO.
NO.	BY:	DATE:	NO.	BY:	DATE:	
1			3			TOTAL SHEETS
2			4			37

DRAWN BY: T. BANKOVICH	DATE: 3-22
CHECKED BY: D.A. SEALEY	DATE: 3-22
DESIGN ENGINEER OF RECORD: D.A. SEALEY	DATE: 3-22

**DOCUMENT NOT CONSIDERED FINAL UNLESS ALL SIGNATURES COMPLETED**