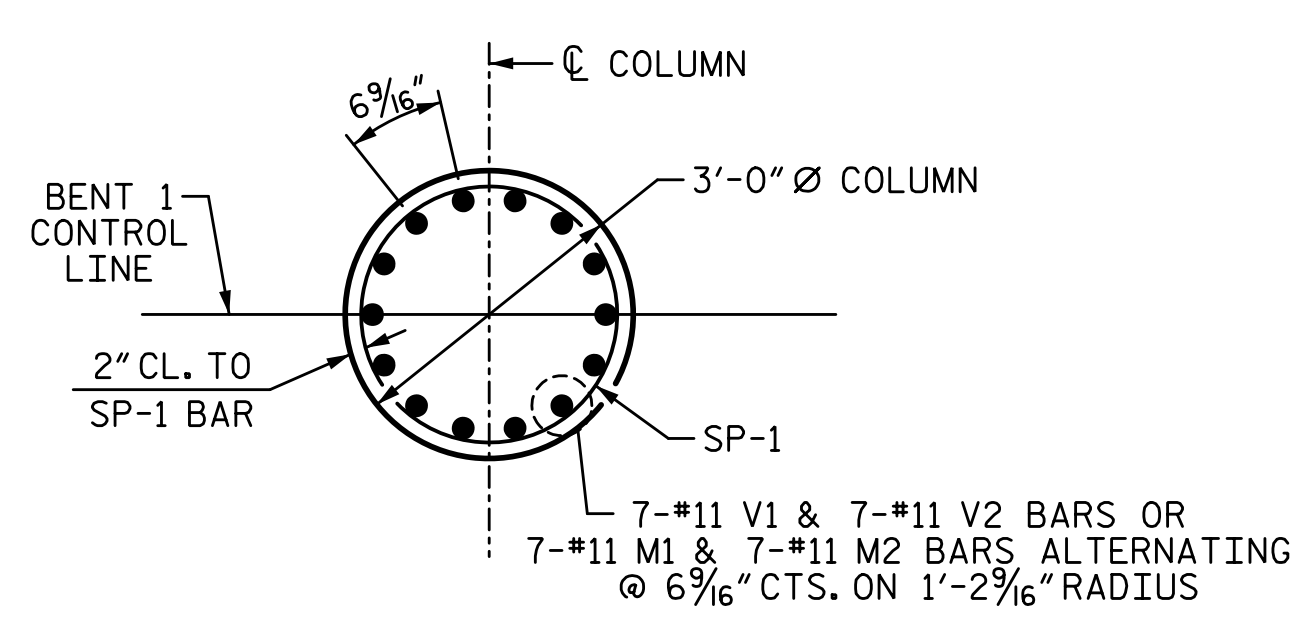
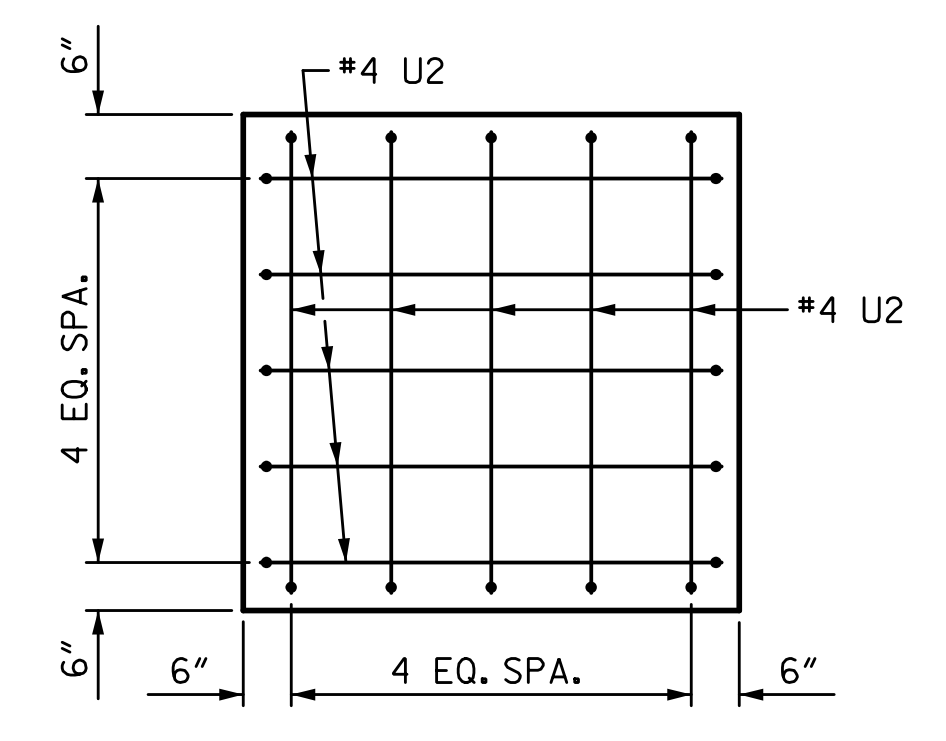


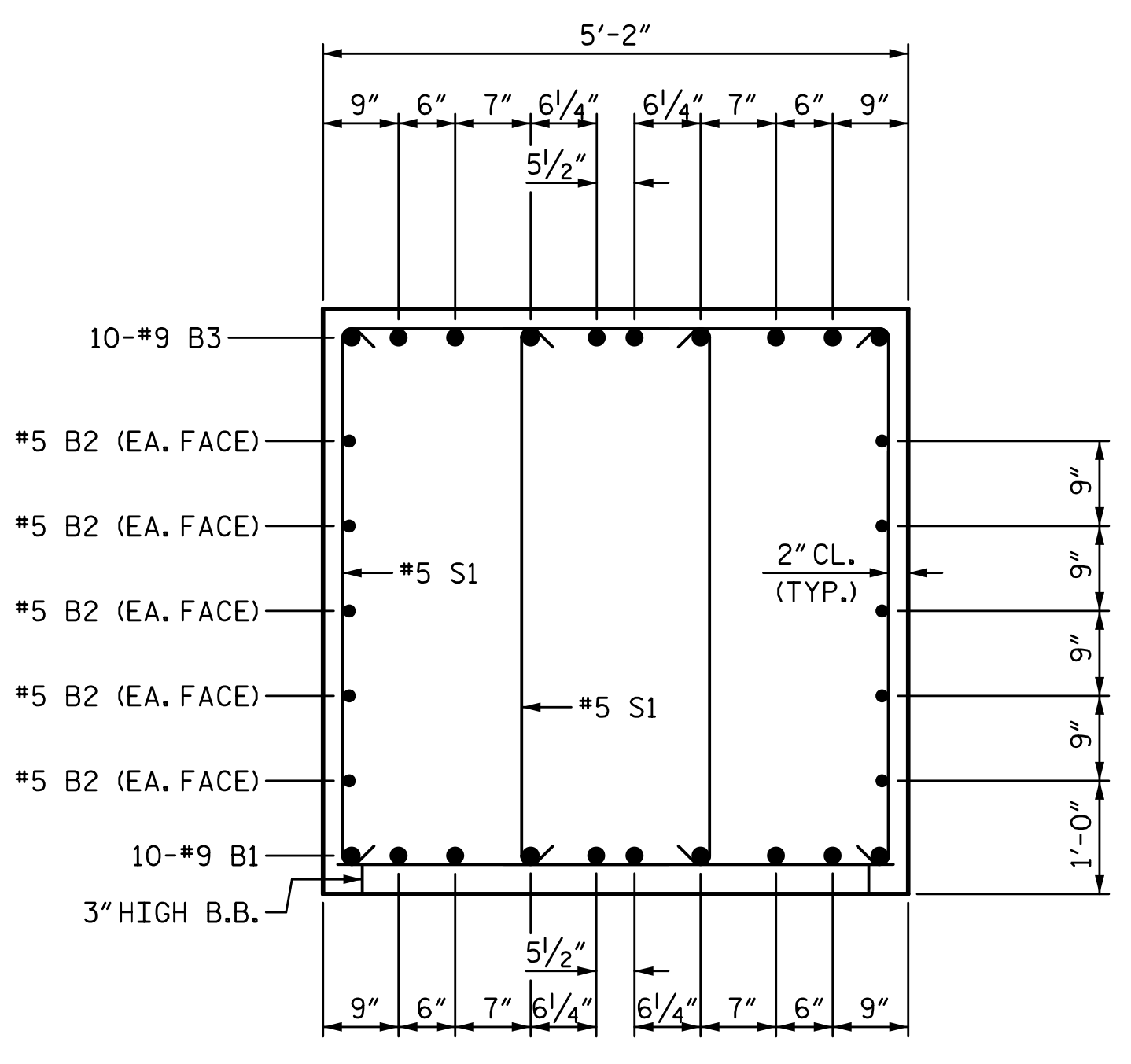
3/21/2022 9:08:58 AM G:\Projects\2020\Division 6 (Mott) Mac - NV5\I-5987B\Structures\Site 7 (Y1B) over L:\Drawings\Final\I5987B_SMU_B1.dgn



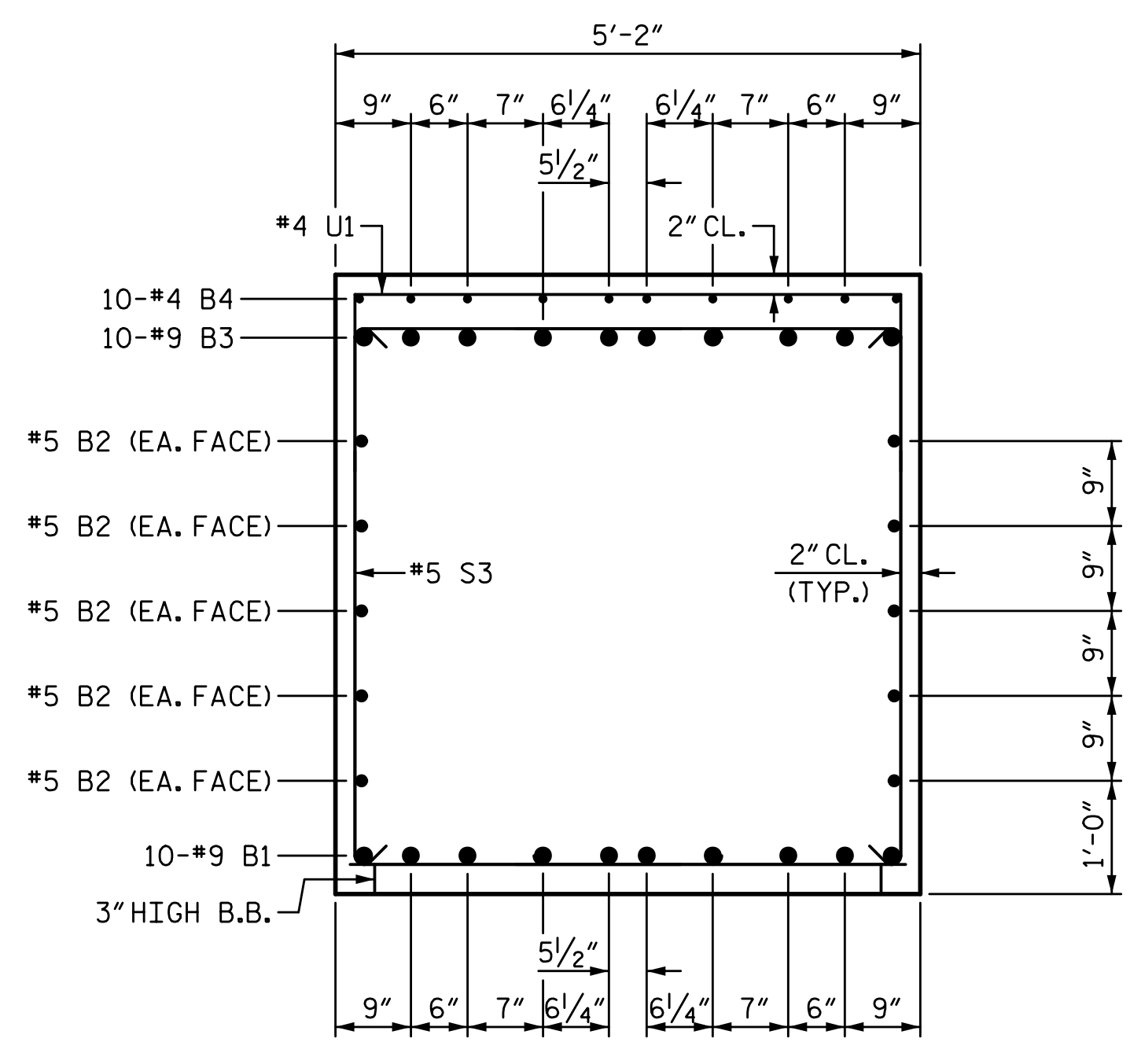
PLAN OF COLUMN
(DIMENSIONS AND REINFORCING STEEL ARE TYPICAL FOR EACH COLUMN)



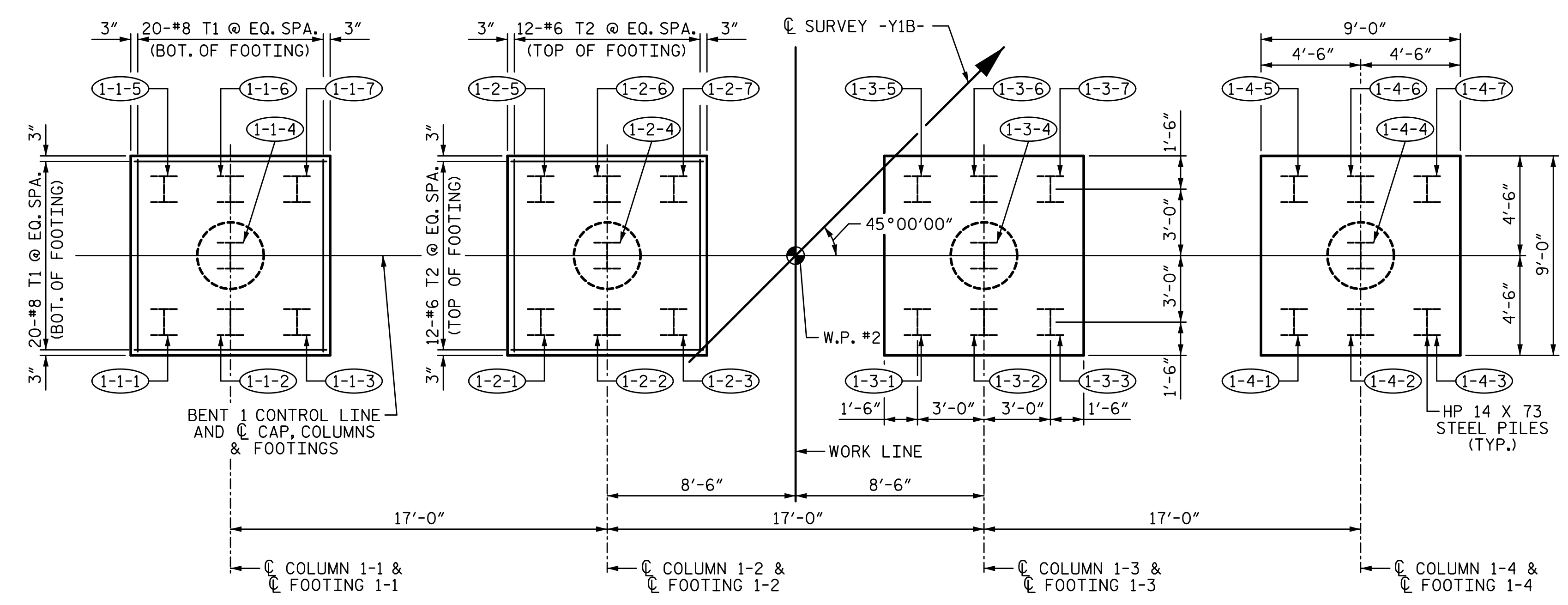
VIEW X-X



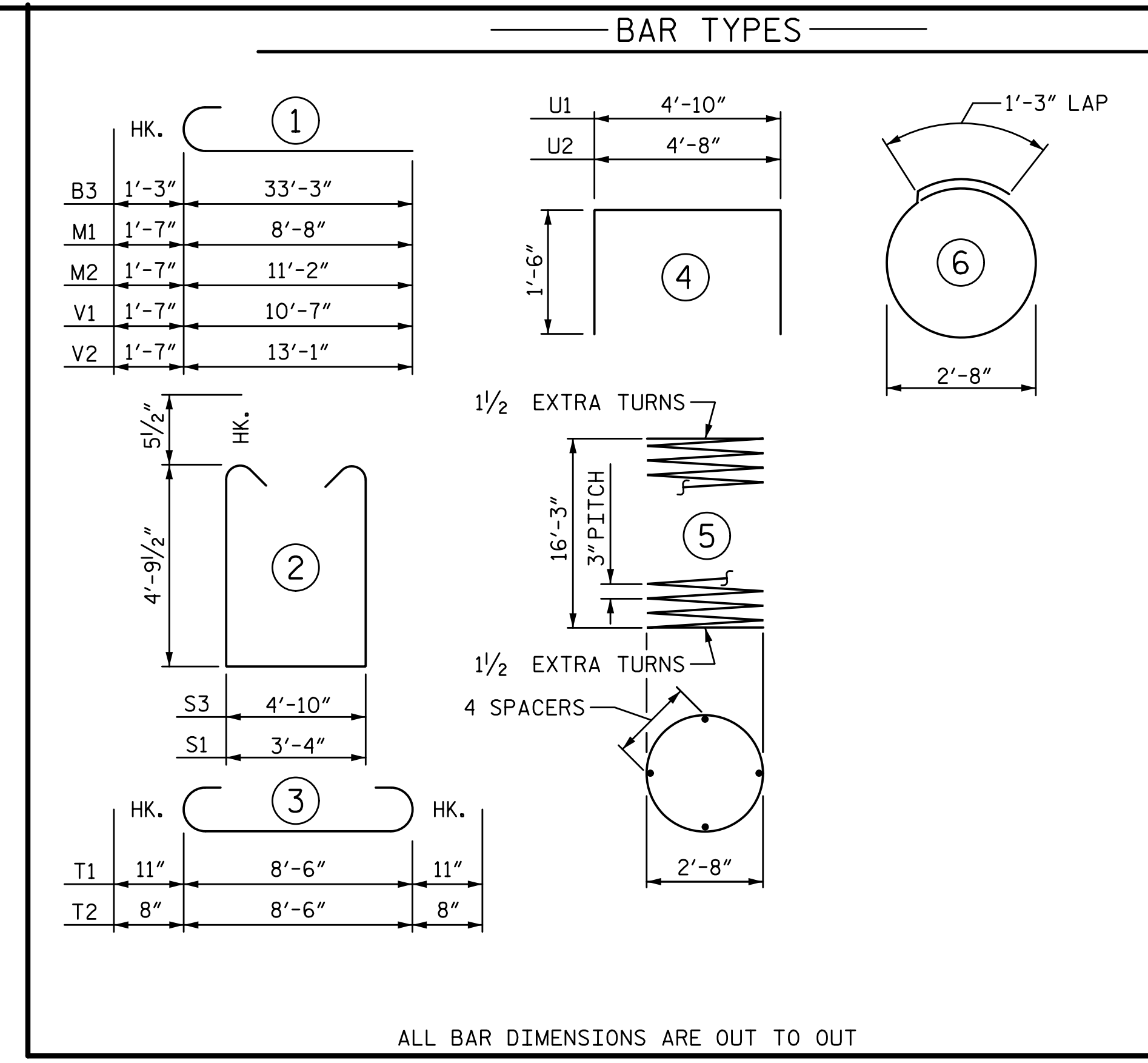
SECTION A-A



SECTION B-B



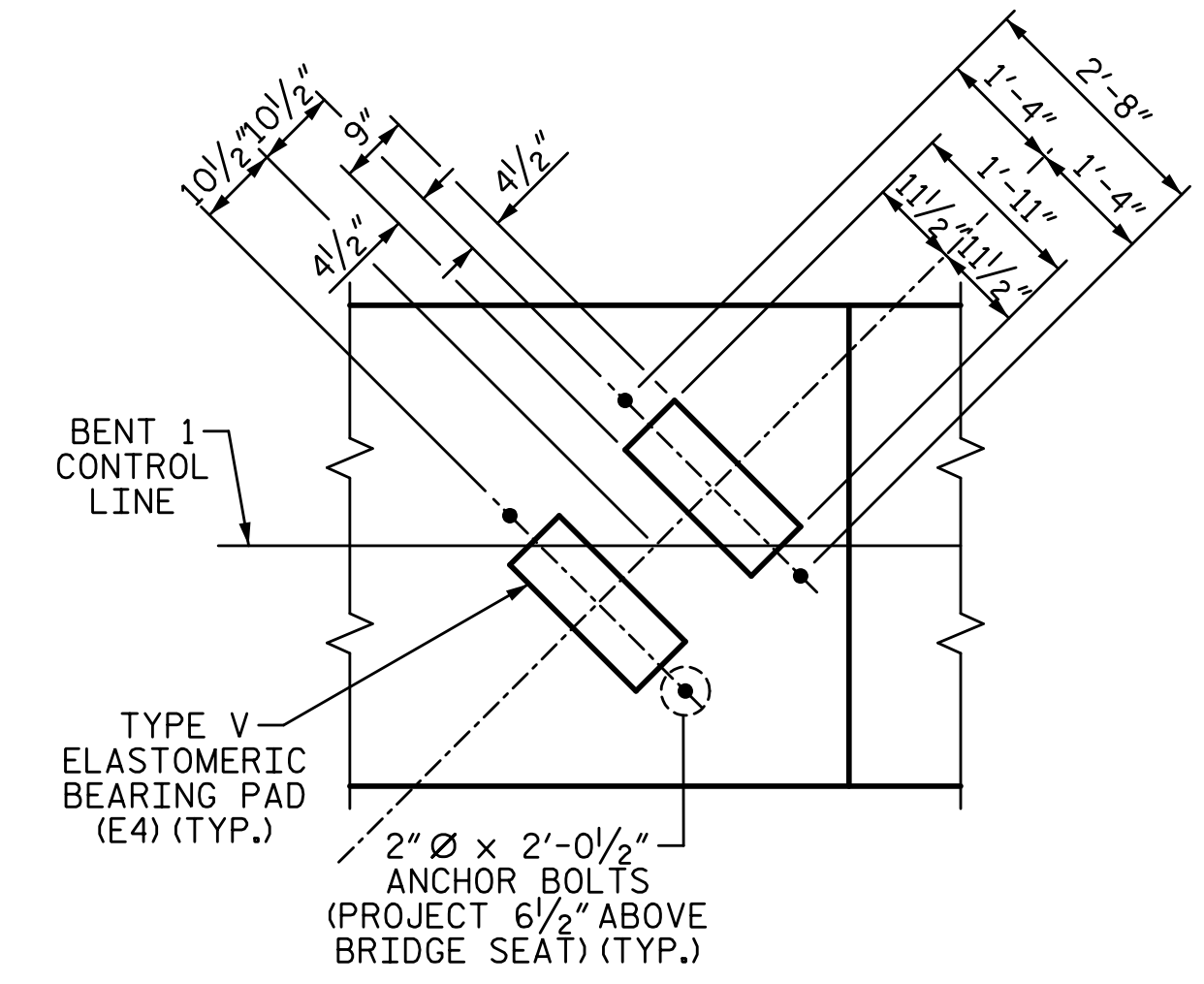
PLAN OF COLUMNS & FOOTINGS
(DIMENSIONS ARE TYPICAL FOR EACH COLUMN & FOOTING)



ALL BAR DIMENSIONS ARE OUT TO OUT

BILL OF MATERIAL					
BENT 1					
BAR NO.	SIZE	TYPE	LENGTH	WEIGHT	
B1	20	#9	STR	32'-7"	2216
B2	20	#5	STR	32'-0"	668
B3	20	#9	1	34'-6"	2346
B4	10	#4	STR	3'-10"	26
M1	28	#11	1	10'-3"	1525
M2	28	#11	1	12'-9"	1897
S1	104	#5	2	13'-10"	1501
S2	44	#4	6	9'-8"	284
S3	19	#5	2	15'-4"	304
T1	160	#8	3	10'-4"	4414
T2	96	#6	3	9'-10"	1418
U1	56	#4	4	7'-10"	293
U2	20	#4	4	7'-8"	102
V1	28	#11	1	12'-2"	1810
V2	28	#11	1	14'-8"	2182
SP-1	4	**	5	558'-10"	2331
REINFORCING STEEL					20986 LB
SPIRAL COL. REINF. STEEL					2331 LB
CLASS "A" CONCRETE BREAKDOWN					
POUR 1 (FOOTINGS)					51.1 CY
POUR 2 (COLUMNS)					16.8 CY
POUR 3 (CAP)					62.4 CY
TOTAL					130.3 CY

** THE SP-1 SPIRAL REINFORCING STEEL SHALL BE W31 OR D31 COLD DRAWN WIRE OR #5 PLAIN OR DEFORM BAR



DETAIL "A"
(TYP. EA. GIRDER)

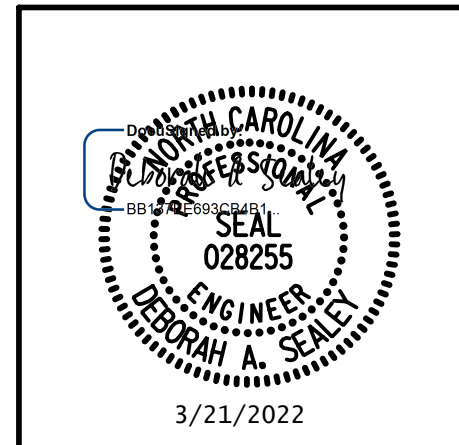
PROJECT NO. I-5987B
ROBESON COUNTY
 STATION: 29+51.04 -Y1B-

SHEET 2 OF 2

STATE OF NORTH CAROLINA
 DEPARTMENT OF TRANSPORTATION
 RALEIGH
 SUBSTRUCTURE

BENT 1

DRAWN BY: S.D. COOPER DATE: 3-22
 CHECKED BY: J.A. BATTS DATE: 3-22
 DESIGN ENGINEER OF RECORD: D.A. SEALEY DATE: 3-22



REVISIONS				SHEET NO.	
NO.	BY:	DATE:	NO.	BY:	DATE:
1			3		
2			4		
					TOTAL SHEETS
					37

DOCUMENT NOT CONSIDERED FINAL UNLESS ALL SIGNATURES COMPLETED