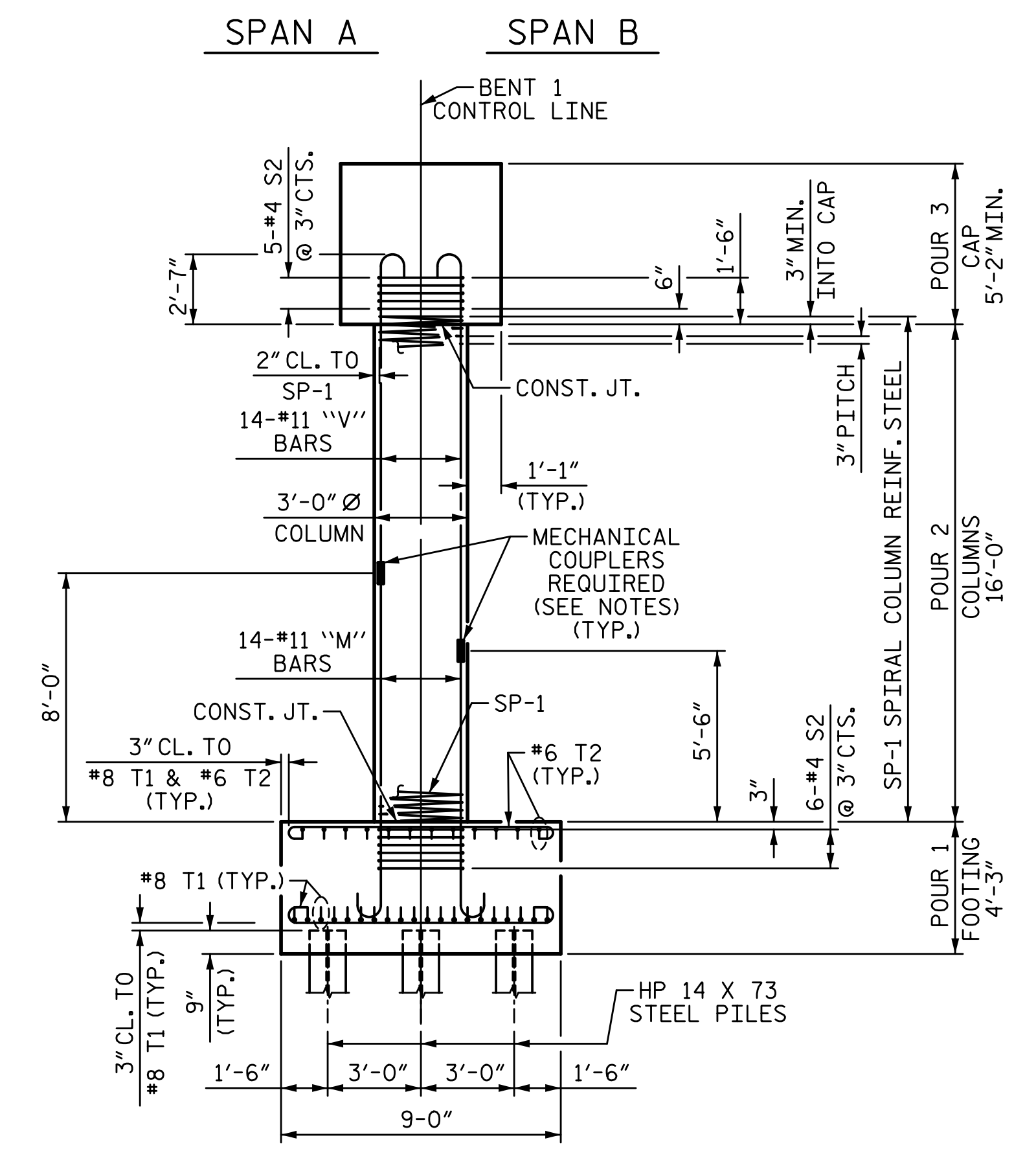
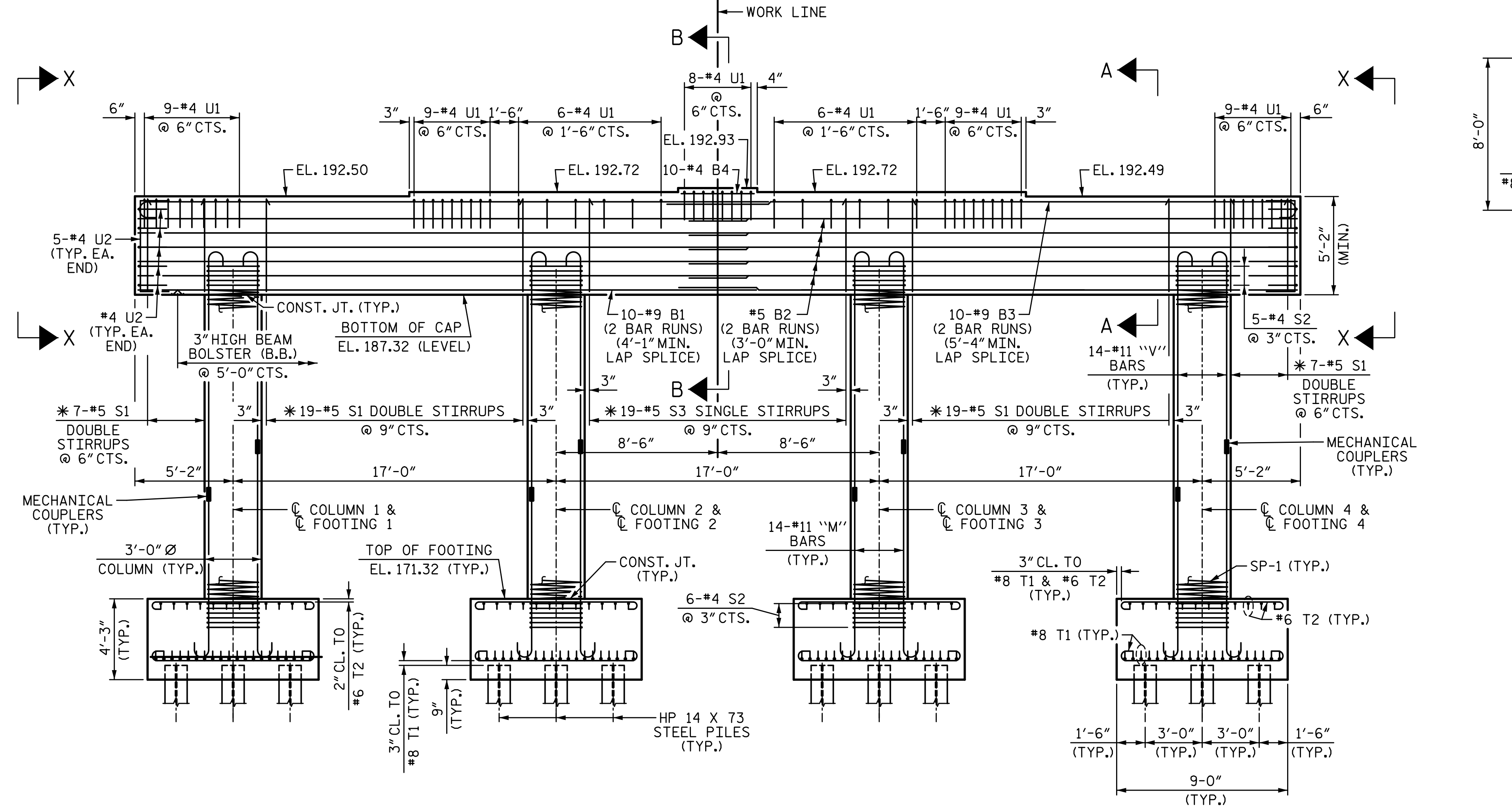
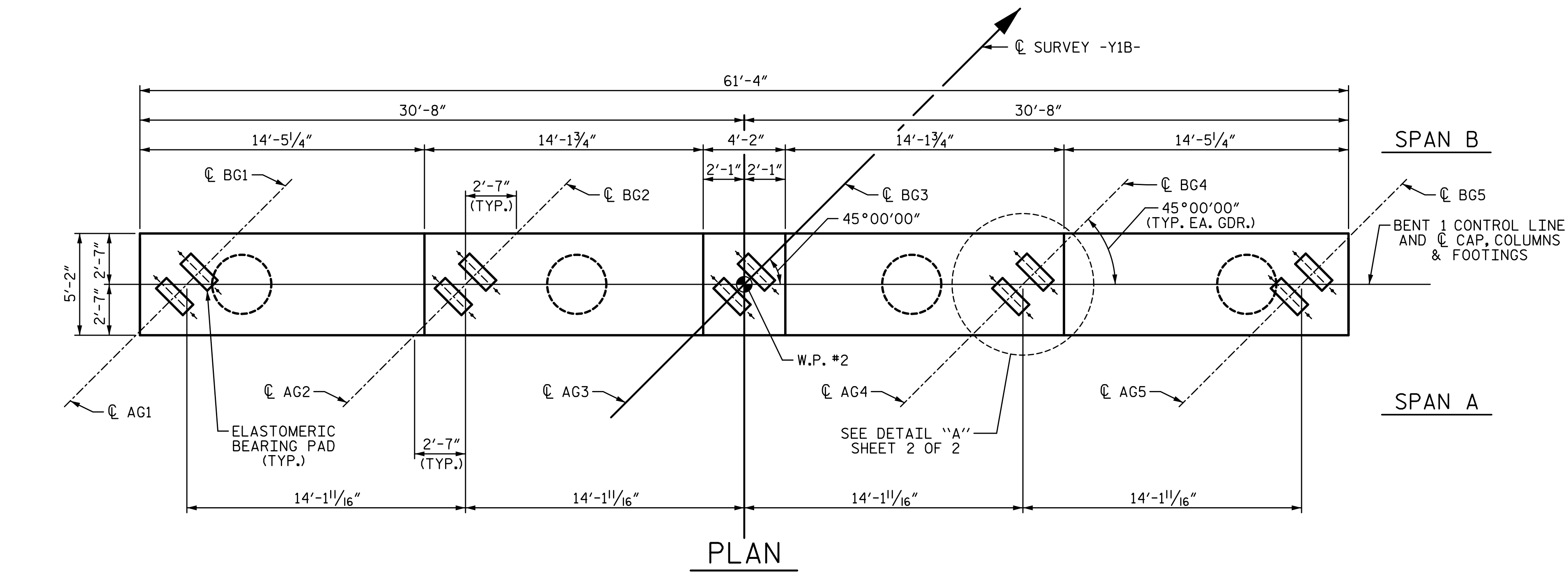


3/21/2022 9:08:58 AM G:\Projects\2020\Division 6 (Mott Mac - NV5)\I-5987B\Structures\Site 7 (Y1B over L)\Drawings\Find\I5987B_SMU_B1.dgn



NOTES:

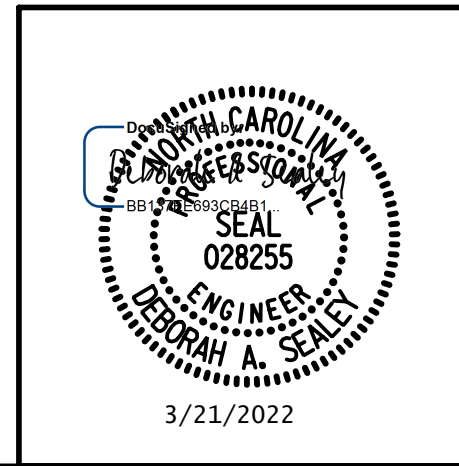
- * INVERT ALTERNATE STIRRUPS.
- STIRRUPS AND "U" BARS IN CAP MAY BE SHIFTED AS NECESSARY TO CLEAR ANCHOR BOLTS.
- HOOKS ON "M" AND "V" BARS MAY BE TURNED AS NECESSARY FOR PLACING REINFORCING STEEL.
- SEE "GENERAL DRAWING FOUNDATION LAYOUT" FOR ADDITIONAL NOTES FOR DRIVING PILES.
- FOR SECTION A-A, SECTION B-B, AND VIEW X-X, SEE SHEET 2 OF 2.
- MECHANICAL COUPLERS ARE REQUIRED FOR "M" BAR AND "V" BAR CONNECTIONS. EACH COUPLER SHALL BE ABLE TO RESIST A TENSILE FORCE OF 47 KIPS. THE COUPLER LOCATIONS SHALL ALTERNATE BETWEEN 8'-0" AND 5'-6" ABOVE TOP OF FOOTING IN EACH COLUMN.

PROJECT NO. I-5987B
ROBESON COUNTY
 STATION: 29+51.04 -Y1B-

SHEET 1 OF 2

STATE OF NORTH CAROLINA
 DEPARTMENT OF TRANSPORTATION
 RALEIGH
 SUBSTRUCTURE

BENT 1



W WGI
 5640 Dillard Drive, Suite 200
 Cary, NC 27518
 LICENSURE NO. C-4434

DRAWN BY: S.D. COOPER	DATE: 3-22
CHECKED BY: J.A. BATTS	DATE: 3-22
DESIGN ENGINEER OF RECORD: D.A. SEALEY	DATE: 3-22

REVISIONS						SHEET NO.
NO.	BY:	DATE:	NO.	BY:	DATE:	S7-29
1			3			TOTAL SHEETS
2			4			37

DOCUMENT NOT CONSIDERED FINAL UNLESS ALL SIGNATURES COMPLETED