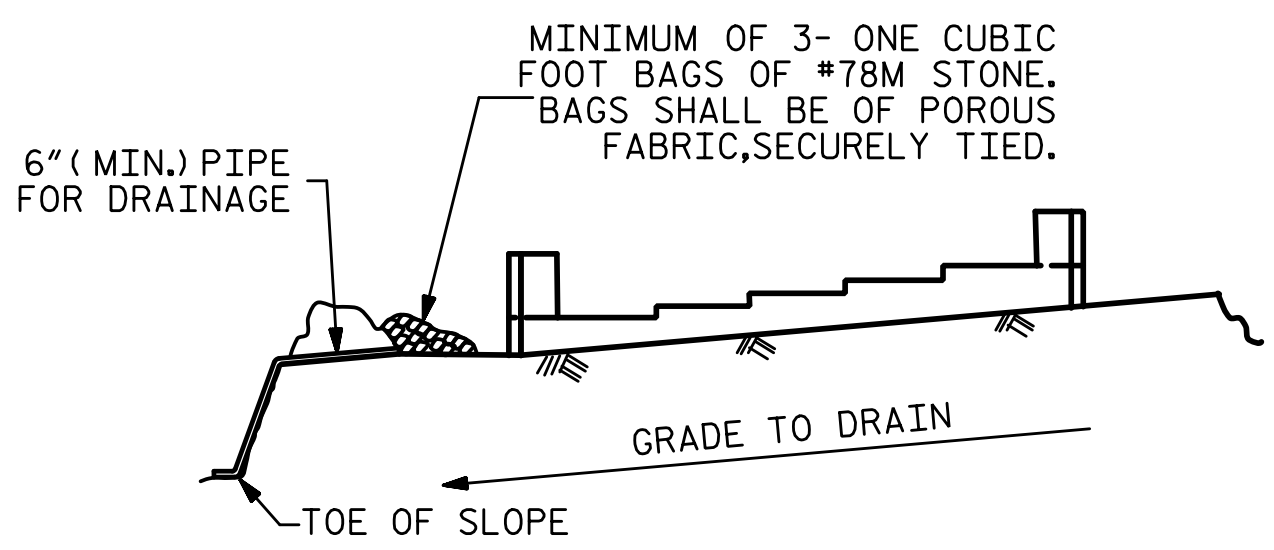


3/21/2022 9:08:57 AM G:\Projects\2020\Division 6 (Mott) Mac - NV5\I-5987B\Structures\Site 7 (Y1B over L)\Drawings\Final\I5987B-SMU-E1.dgn

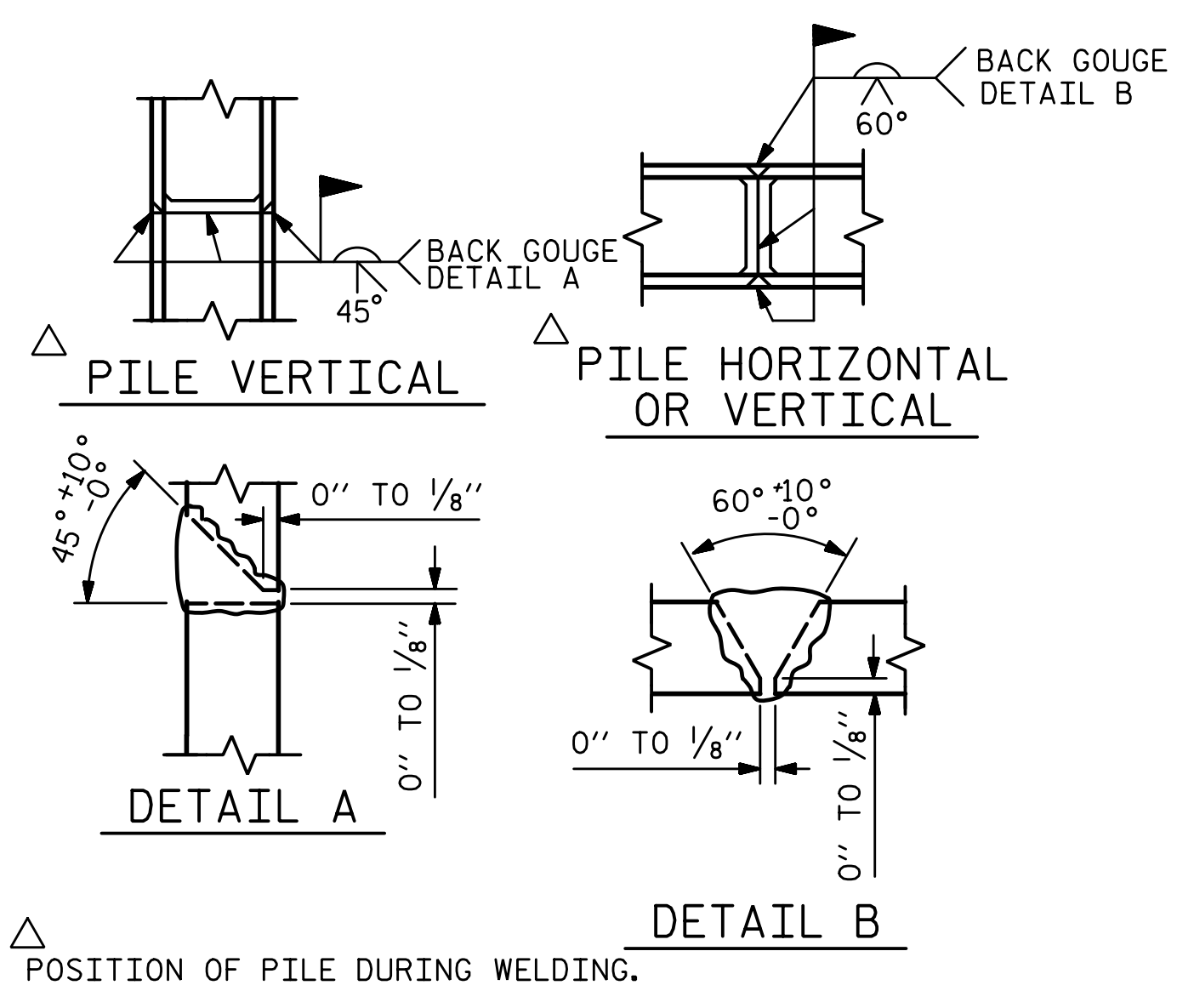
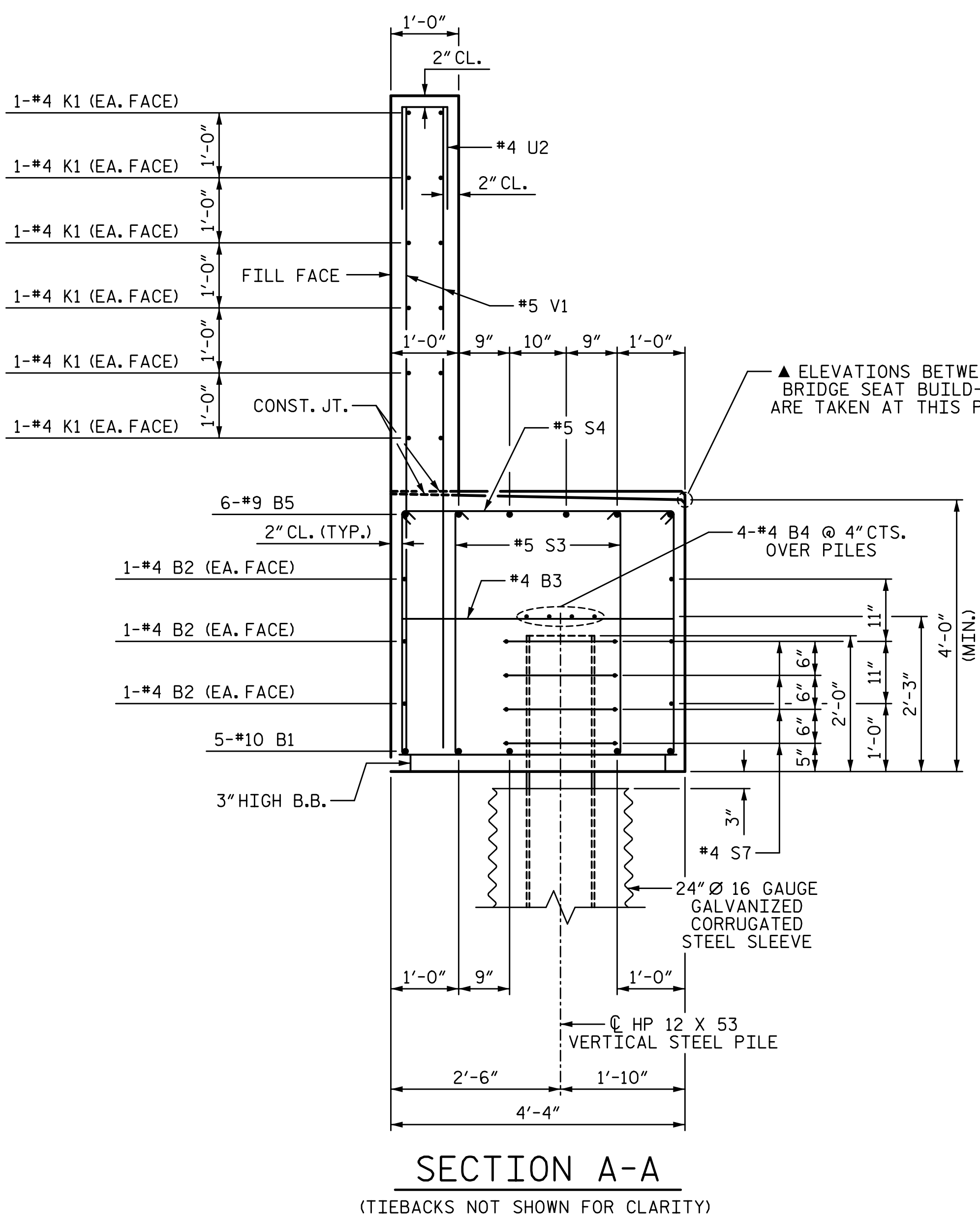


BAGGED STONE AND PIPE SHALL BE PLACED IMMEDIATELY AFTER COMPLETION OF END BENT EXCAVATION. PIPE MAY BE EITHER CONCRETE, CORRUGATED STEEL, CORRUGATED ALUMINUM ALLOY, OR CORRUGATED PLASTIC. PERFORATED PIPE WILL NOT BE ALLOWED.

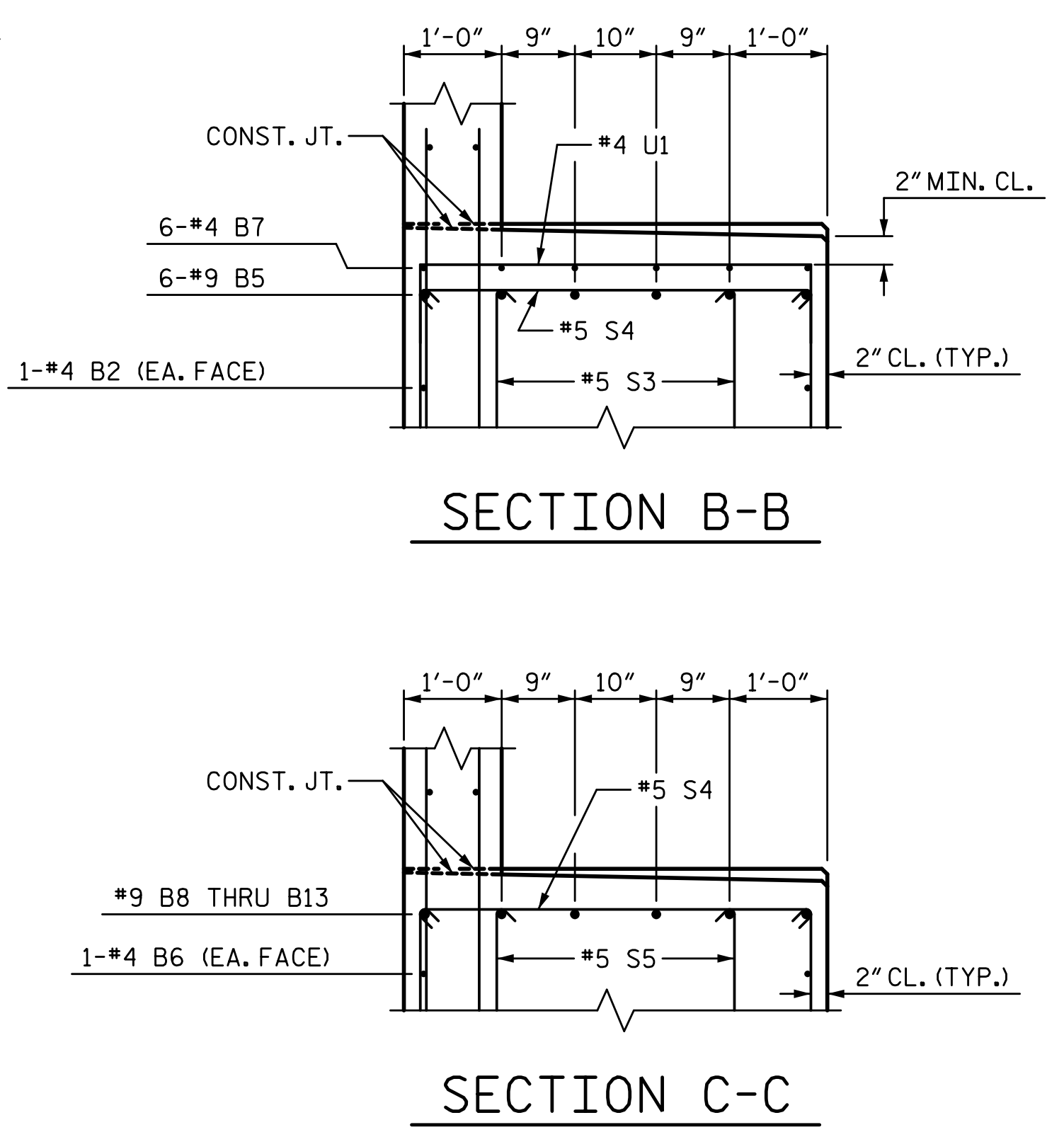
BAGGED STONE SHALL REMAIN IN PLACE UNTIL THE ENGINEER DIRECTS THAT IT BE REMOVED. THE CONTRACTOR SHALL REMOVE AND DISPOSE OF SILT ACCUMULATIONS AT BAGGED STONE WHEN SO DIRECTED BY THE ENGINEER. BAGS SHALL BE REMOVED AND REPLACED WHENEVER THE ENGINEER DETERMINES THAT THEY HAVE DETERIORATED AND LOST THEIR EFFECTIVENESS.

NO SEPARATE PAYMENT WILL BE MADE FOR THIS WORK AND THE ENTIRE COST OF THIS WORK SHALL BE INCLUDED IN THE UNIT CONTRACT PRICE BID FOR THE SEVERAL PAY ITEMS.

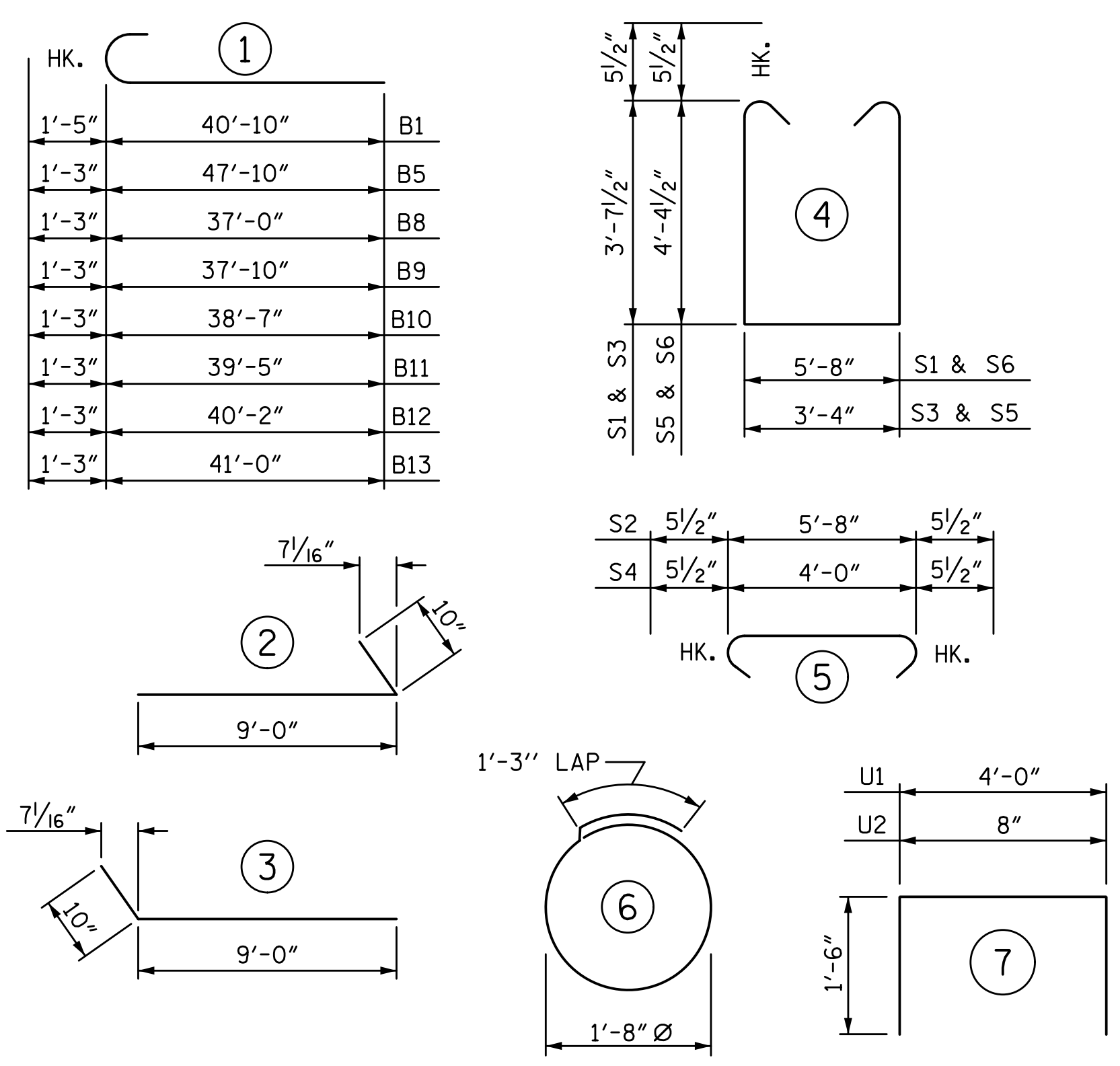
### TEMPORARY DRAINAGE AT END BENT



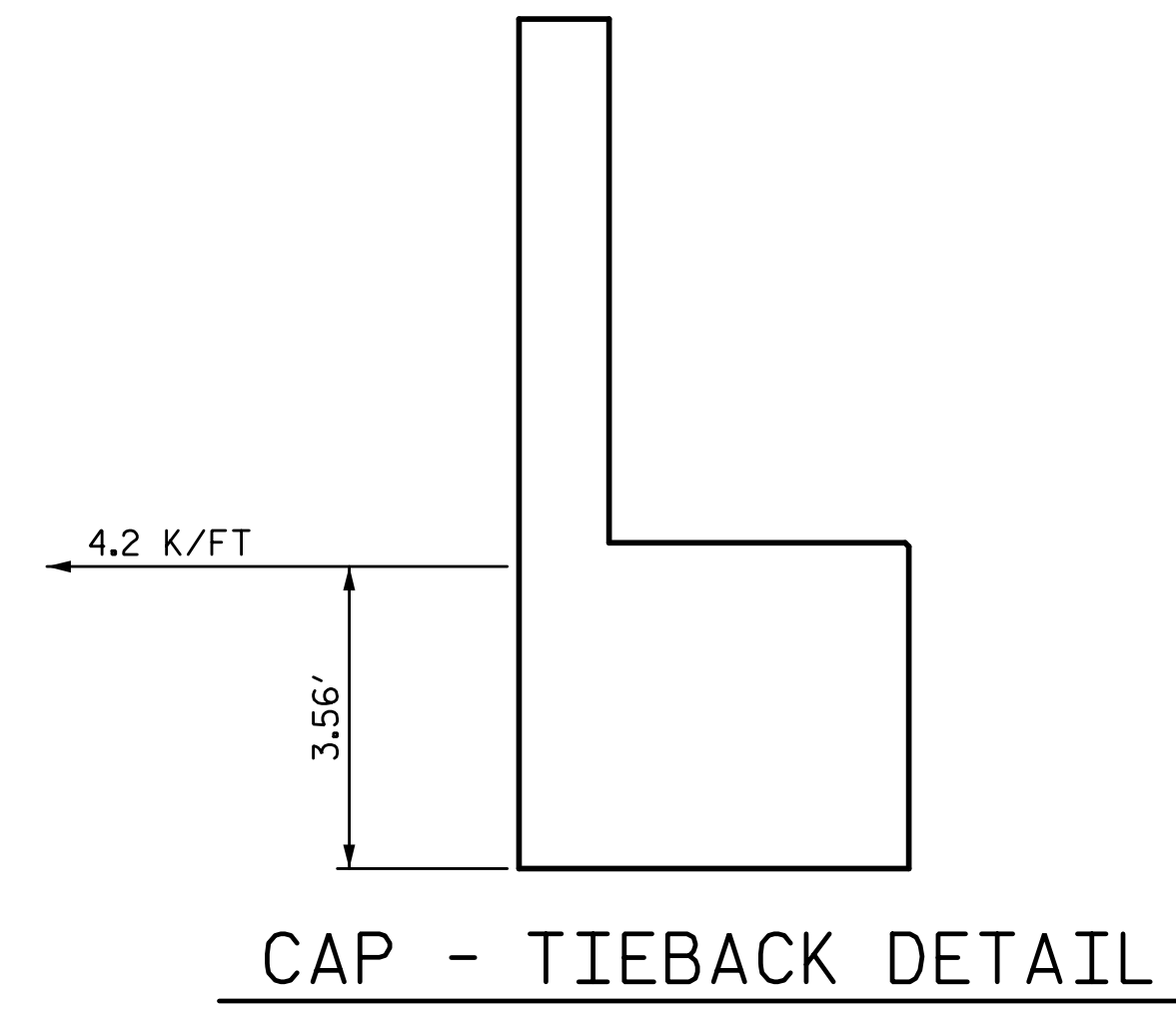
### PILE SPLICE DETAILS



### BAR TYPES



ALL BAR DIMENSIONS ARE OUT TO OUT



### BILL OF MATERIAL

END BENT 1					
BAR	NO.	SIZE	TYPE	LENGTH	WEIGHT
B1	10	#10	1	42'-3"	1818
B2	12	#4	STR	39'-10"	319
B3	20	#4	STR	4'-0"	53
B4	8	#4	STR	39'-10"	213
B5	6	#9	1	49'-1"	1001
B6	2	#4	STR	34'-7"	46
B7	6	#4	STR	14'-0"	56
B8	1	#9	1	38'-3"	130
B9	1	#9	1	39'-1"	133
B10	1	#9	1	39'-10"	135
B11	1	#9	1	40'-8"	138
B12	1	#9	1	41'-5"	141
B13	1	#9	1	42'-3"	144

H1	32	#5	2	9'-10"	328
H2	36	#5	3	9'-10"	369
K1	24	#4	STR	39'-10"	639
K2	8	#4	STR	3'-4"	18

S1	2	#5	4	13'-10"	29
S2	4	#5	5	6'-7"	27
S3	96	#5	4	11'-6"	1151
S4	96	#5	5	4'-11"	492
S5	96	#5	4	13'-0"	1302
S6	2	#5	4	15'-4"	32
S7	36	#4	6	6'-6"	156

U1	10	#4	7	7'-0"	47
U2	69	#4	7	3'-8"	169
V1	138	#5	STR	9'-5"	1355
V2	28	#5	STR	10'-8"	312
V3	28	#5	STR	11'-7"	338

TOTAL REINFORCING STEEL 11091 LB

CLASS A CONCRETE BREAKDOWN	
POUR 1 (CAP & LOWER WINGS)	57.0 CY
POUR 2 (UPPER WINGS & BACKWALL)	22.0 CY
<b>TOTAL CLASS A CONCRETE</b>	<b>79.0 CY</b>

PROJECT NO. I-5987B  
ROBESON COUNTY  
 STATION: 29+51.04 -Y1B-

SHEET 3 OF 3

STATE OF NORTH CAROLINA  
 DEPARTMENT OF TRANSPORTATION  
 RALEIGH  
 SUBSTRUCTURE  
**END BENT 1**



REVISIONS					
NO.	BY:	DATE:	NO.	BY:	DATE:
1			3		
2			4		

SHEET NO. S7-28  
 TOTAL SHEETS 37

DRAWN BY: T. BANKOVICH DATE: 3-22  
 CHECKED BY: D.A. SEALEY DATE: 3-22  
 DESIGN ENGINEER OF RECORD: D.A. SEALEY DATE: 3-22

**DOCUMENT NOT CONSIDERED FINAL UNLESS ALL SIGNATURES COMPLETED**