

3/21/2022 9:08:50 AM G:\Projects\2020\Division 6 (Mott) Mac - NV5\I-5987B\Structures\Site 7 (Y1B) over L:\Drawings\Find\I5987B_SMU_MD.dgn

NOTES:

ALL REINFORCING STEEL IN CONCRETE MEDIANS SHALL BE EPOXY COATED.

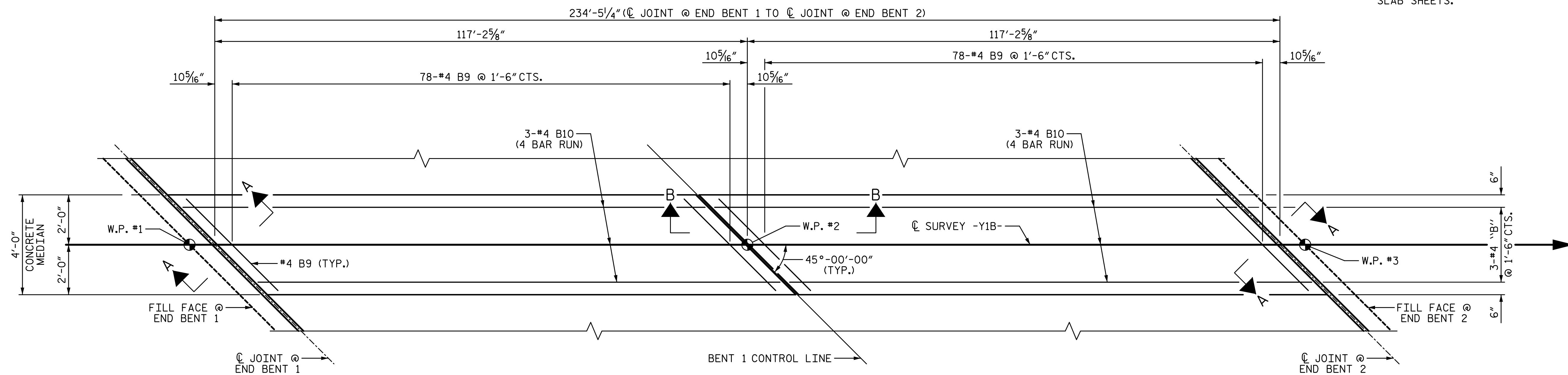
GROOVED CONTRACTION JOINTS, 1/2" IN DEPTH SHALL BE TOOLED IN ALL EXPOSED FACES OF THE CONCRETE MEDIAN IN ACCORDANCE WITH ARTICLE 825-10(B) OF THE STANDARD SPECIFICATIONS. THE CONTRACTION JOINTS SHALL BE LOCATED AT A SPACING OF 8 FT. TO 10 FT. BETWEEN EXPANSION JOINTS. NO CONTRACTION JOINTS WILL BE REQUIRED FOR SEGMENTS LESS THAN 10 FEET IN LENGTH.

THE CONCRETE MEDIAN IN A CONTINUOUS UNIT SHALL NOT BE CAST UNTIL ALL SLAB CONCRETE IN THE UNIT HAS BEEN CAST AND HAS REACHED A MINIMUM COMPRESSIVE STRENGTH OF 3000 PSI.

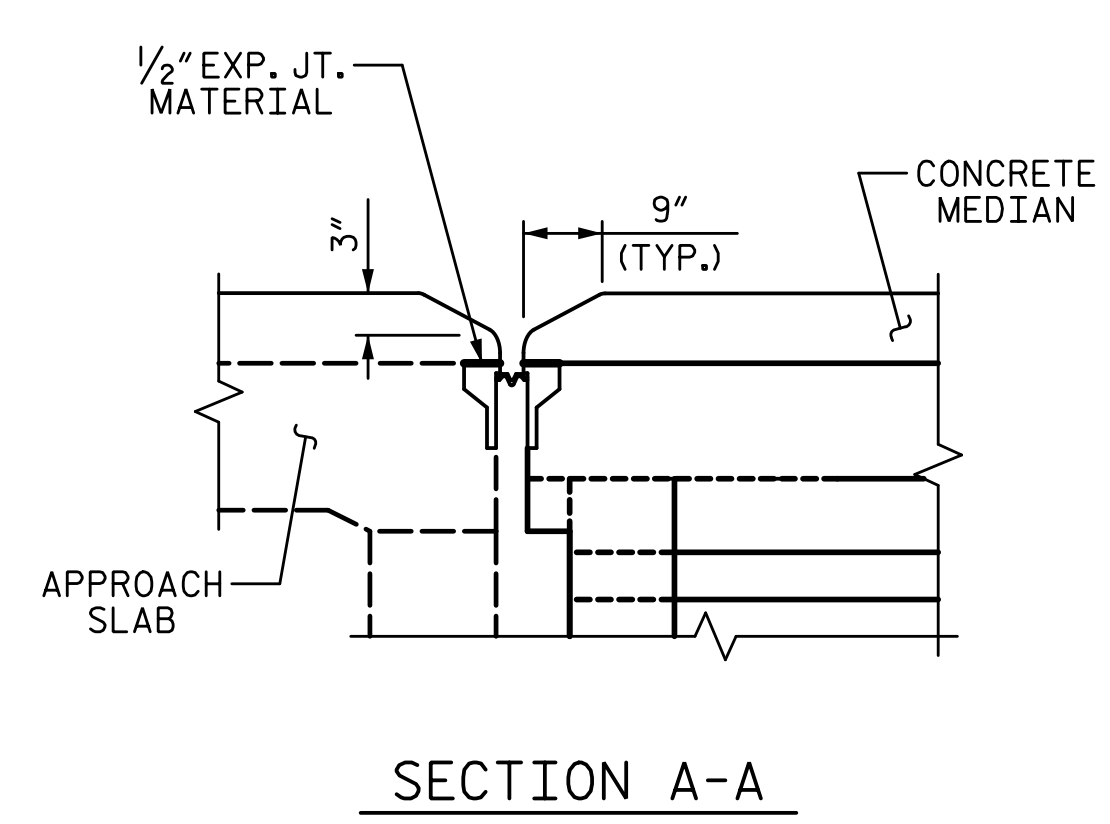
NO SEPARATE MEASUREMENT OR PAYMENT WILL BE MADE FOR MATERIALS OR LABOR REQUIRED TO CONSTRUCT THE CONCRETE MEDIAN. THE ENTIRE COST OF THIS WORK SHALL BE INCLUDED IN THE UNIT BID PRICE FOR THE REINFORCED CONCRETE DECK SLAB.

FOR CONCRETE AND REINFORCING STEEL QUANTITIES, SEE "BILL OF MATERIAL SHEET", SHEET 2 OF 2.

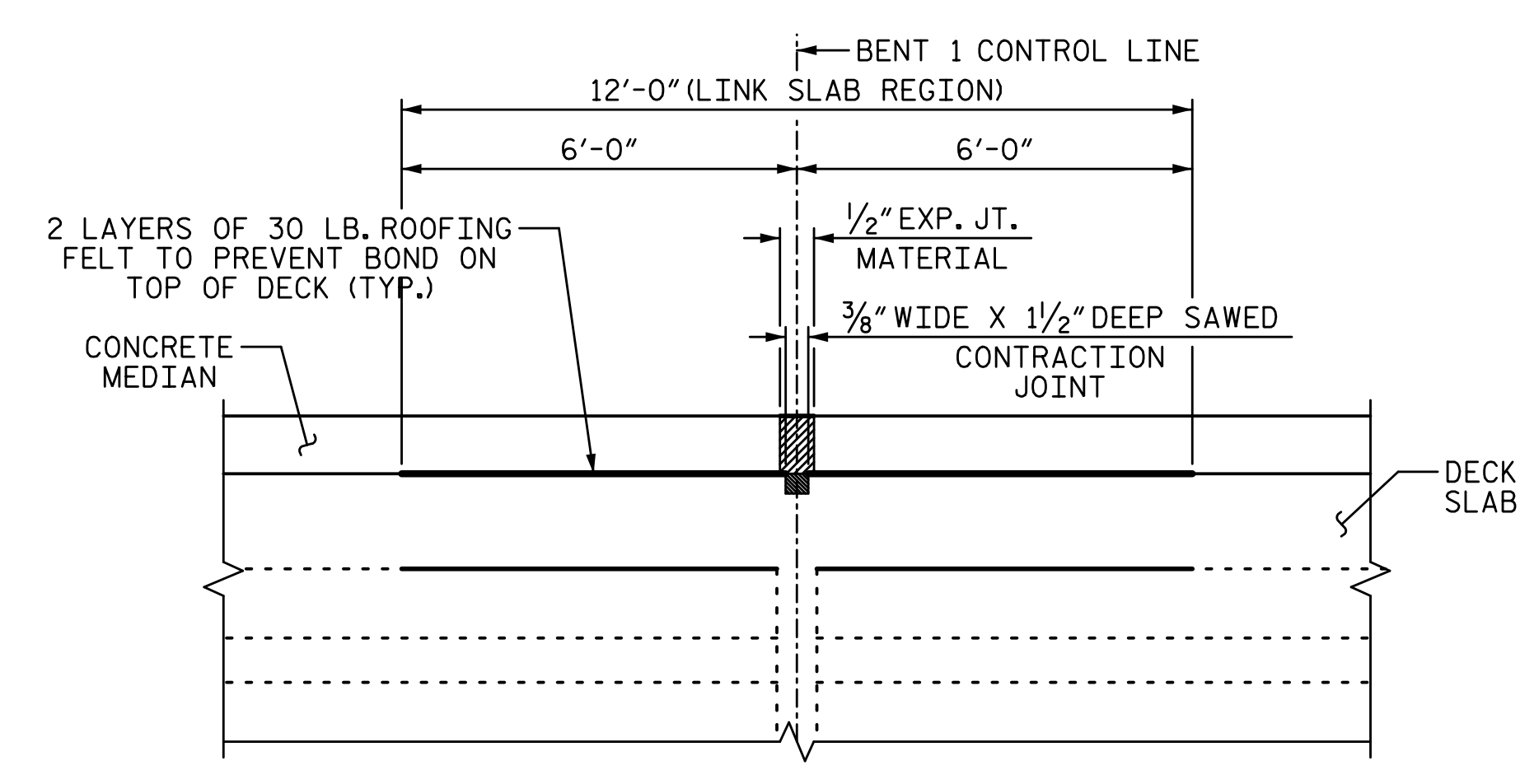
FOR MEDIAN ON APPROACH SLABS, SEE APPROACH SLAB SHEETS.



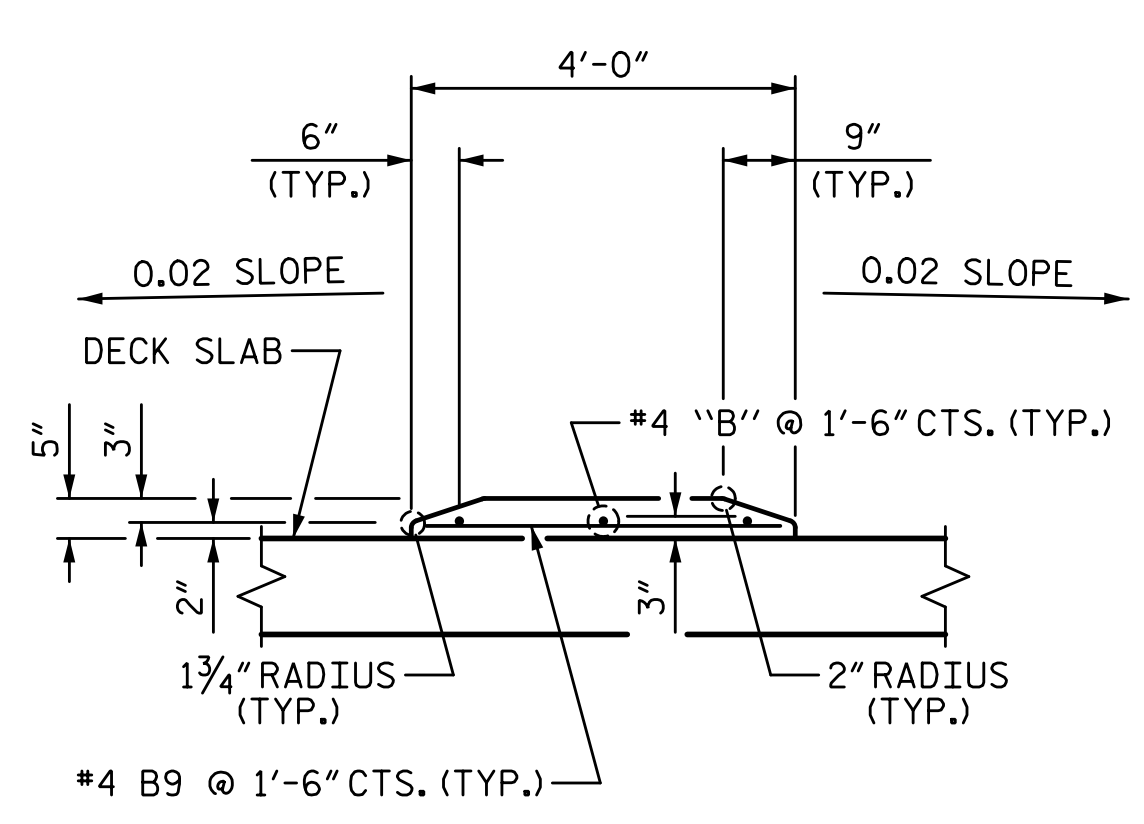
PLAN OF CONCRETE MEDIAN



SECTION A-A



**SECTION B-B
CONCRETE MEDIAN DETAILS**



REINFORCING STEEL DETAILS

PROJECT NO. I-5987B
ROBESON COUNTY
 STATION: 29+51.04 -Y1B-

STATE OF NORTH CAROLINA
 DEPARTMENT OF TRANSPORTATION
 RALEIGH
 SUPERSTRUCTURE
CONCRETE MEDIAN

W WGI
 5640 Dillard Drive, Suite 200
 Cary, NC 27518
 LICENSURE NO. C-4434

STATE OF NORTH CAROLINA
 PROFESSIONAL ENGINEER
 SEAL
 028255
 DORIAN A. SEALEY
 3/21/2022

DRAWN BY: T. BANKOVICH	DATE: 3-22
CHECKED BY: D.A. SEALEY	DATE: 3-22
DESIGN ENGINEER OF RECORD: D.A. SEALEY	DATE: 3-22

REVISIONS						SHEET NO.
NO.	BY:	DATE:	NO.	BY:	DATE:	S7-20
1			3			TOTAL SHEETS
2			4			37

**DOCUMENT NOT CONSIDERED FINAL
 UNLESS ALL SIGNATURES COMPLETED**