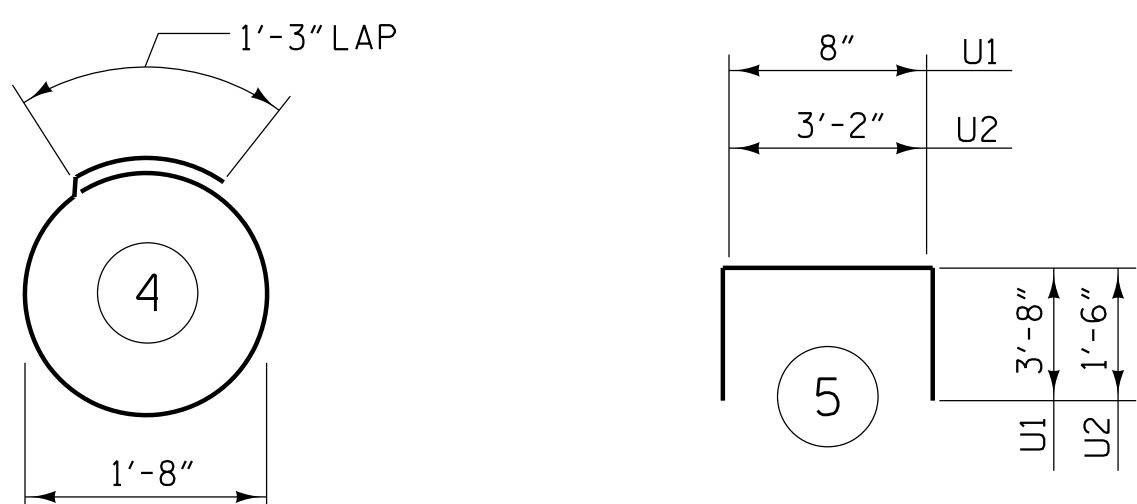
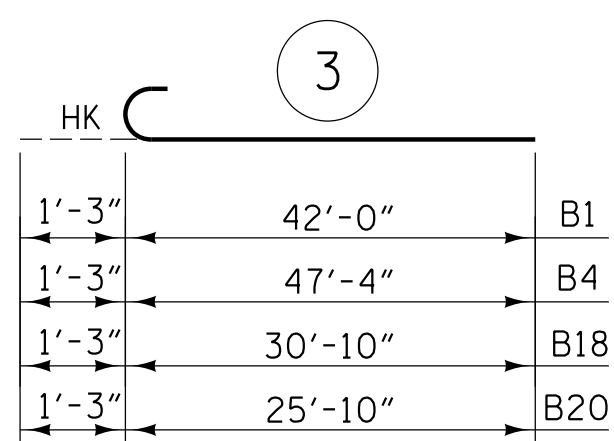
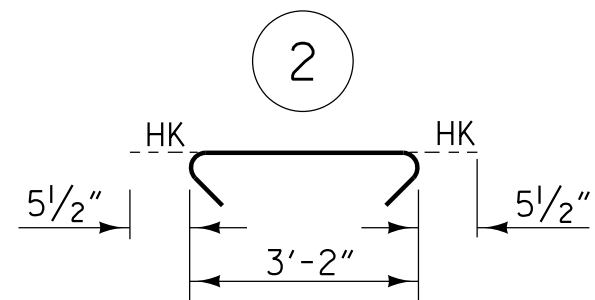
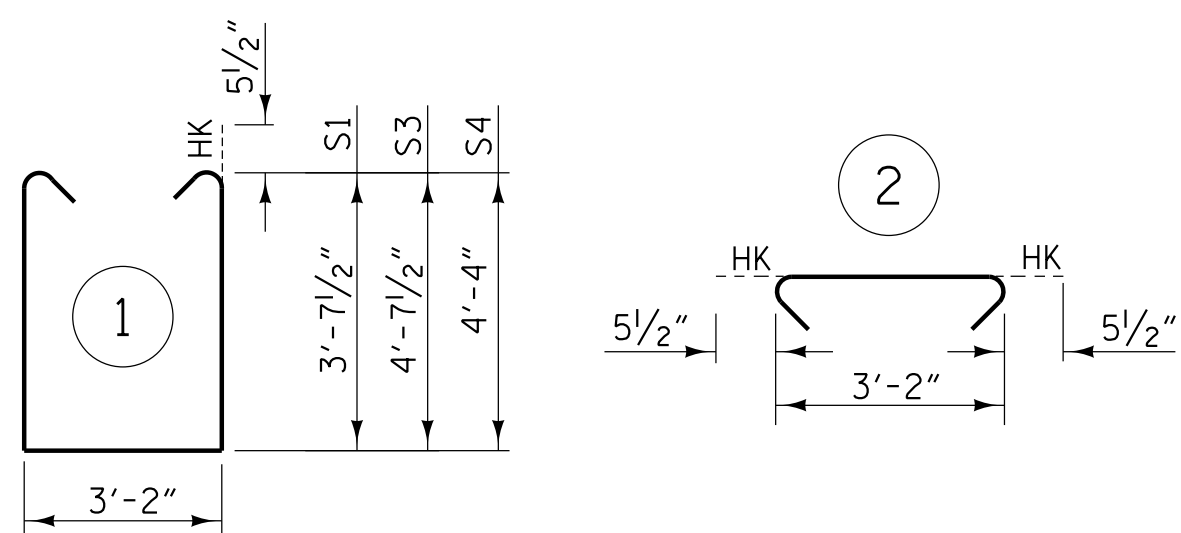


BAR TYPES



ALL BAR DIMENSIONS ARE OUT TO OUT

BILL OF MATERIAL

END BENT 2-STAGE I						END BENT 2-STAGE II						END BENT 2-STAGE III					
BAR	NO.	SIZE	TYPE	LENGTH	WEIGHT	BAR	NO.	SIZE	TYPE	LENGTH	WEIGHT	BAR	NO.	SIZE	TYPE	LENGTH	WEIGHT
B1	4	#9	3	43'-3"	588	B8	4	#9	STR	15'-0"	204	B15	4	#9	STR	54'-10"	746
B2	4	#4	STR	23'-6"	63	B9	4	#4	STR	11'-0"	29	B16	4	#4	STR	27'-9"	74
B3	4	#9	STR	11'-2"	152	B10	4	#9	STR	34'-1"	464	B17	4	#4	STR	12'-0"	32
B4	4	#9	3	48'-7"	661	B11	4	#9	STR	34'-1"	464	B18	4	#9	3	32'-1"	436
B5	10	#5	STR	45'-0"	469	B12	20	#5	STR	21'-11"	457	B19	4	#9	STR	60'-0"	816
B6	8	#4	STR	22'-0"	118	B13	4	#4	STR	37'-6"	100	B20	4	#9	3	27'-1"	368
B7	11	#4	STR	3'-2"	23	B14	10	#4	STR	3'-2"	21	B21	20	#5	STR	41'-10"	873
												B22	12	#4	STR	28'-6"	228
												B23	9	#4	STR	3'-2"	19
K1	24	#4	STR	21'-10"	350	K2	24	#4	STR	21'-10"	350	K3	36	#4	STR	28'-4"	681
S1	60	#5	1	11'-4"	709	S2	61	#5	2	4'-1"	260	S3	41	#5	1	11'-4"	485
S2	69	#5	2	4'-1"	294	S3	23	#5	1	13'-4"	320	S2	131	#5	2	4'-1"	558
S3	9	#5	1	13'-4"	125	S4	38	#5	1	12'-9"	505	S4	90	#5	1	12'-9"	1197
S5	24	#4	4	6'-6"	104	S5	24	#4	4	6'-6"	104	S5	48	#4	4	6'-6"	208
U1	57	#5	5	8'-0"	476	U1	51	#5	5	8'-0"	426	U1	107	#5	5	8'-0"	893
U2	16	#4	5	6'-2"	66	U2	8	#4	5	6'-2"	33	U2	28	#4	5	6'-2"	115
V1	114	#5	STR	9'-7"	1139	V1	102	#5	STR	9'-7"	1020	V1	214	#5	STR	10'-11"	2437
V2	4	#5	STR	9'-2"	38							V3	4	#5	STR	9'-2"	38
TOTAL REINFORCING STEEL					5375 lbs.	TOTAL REINFORCING STEEL					4757 lbs.	TOTAL REINFORCING STEEL					10204 lbs.
CLASS "A" CONCRETE - CU. YARDS						CLASS "A" CONCRETE - CU. YARDS						CLASS "A" CONCRETE - CU. YARDS					
POUR 1 (CAP)					26.2 cu. yds.	POUR 1 (CAP)					25.4 cu. yds.	POUR 1 (CAP)					50.4 cu. yds.
POUR 2 (BACKWALL)					10.0 cu. yds.	POUR 2 (BACKWALL)					8.7 cu. yds.	POUR 2 (BACKWALL)					18.5 cu. yds.
TOTAL					36.2 cu. yds.	TOTAL					34.1 cu. yds.	TOTAL					68.9 cu. yds.

4/20/2022 10:41 AM G:\Project\2019\2019\7\03\CLIENT\Structures\I-5987B\I5 - NC 2019\987B_SML\EB_170691.dgn

DRAWN BY : W.B. ALLEN DATE : 12/21
 CHECKED BY : M.D. METZGER DATE : 12/21
 DESIGN ENGINEER OF RECORD: L. K. AUSTIN DATE : 01/22

PLANS PREPARED BY:

NV5

NV5 ENGINEERS & CONSULTANTS, INC.
 3300 REGENCY PARKWAY, SUITE 100
 CARY, NC 27518
 P: 919.851.1912 www.NV5.com
 NC License # F-1333

**DOCUMENT NOT CONSIDERED FINAL
 UNLESS ALL SIGNATURES COMPLETED**

PROJECT NO. I-5987B
ROBESON COUNTY
 STATION: 617+12.20 -L- POT

SHEET 4 OF 4

STATE OF NORTH CAROLINA
 DEPARTMENT OF TRANSPORTATION
 RALEIGH

SUBSTRUCTURE
 END BENT 2
 BILL OF MATERIAL

REVISIONS						SHEET NO.
NO.	BY:	DATE:	NO.	BY:	DATE:	TOTAL SHEETS
1			3			
2			4			

S6-48