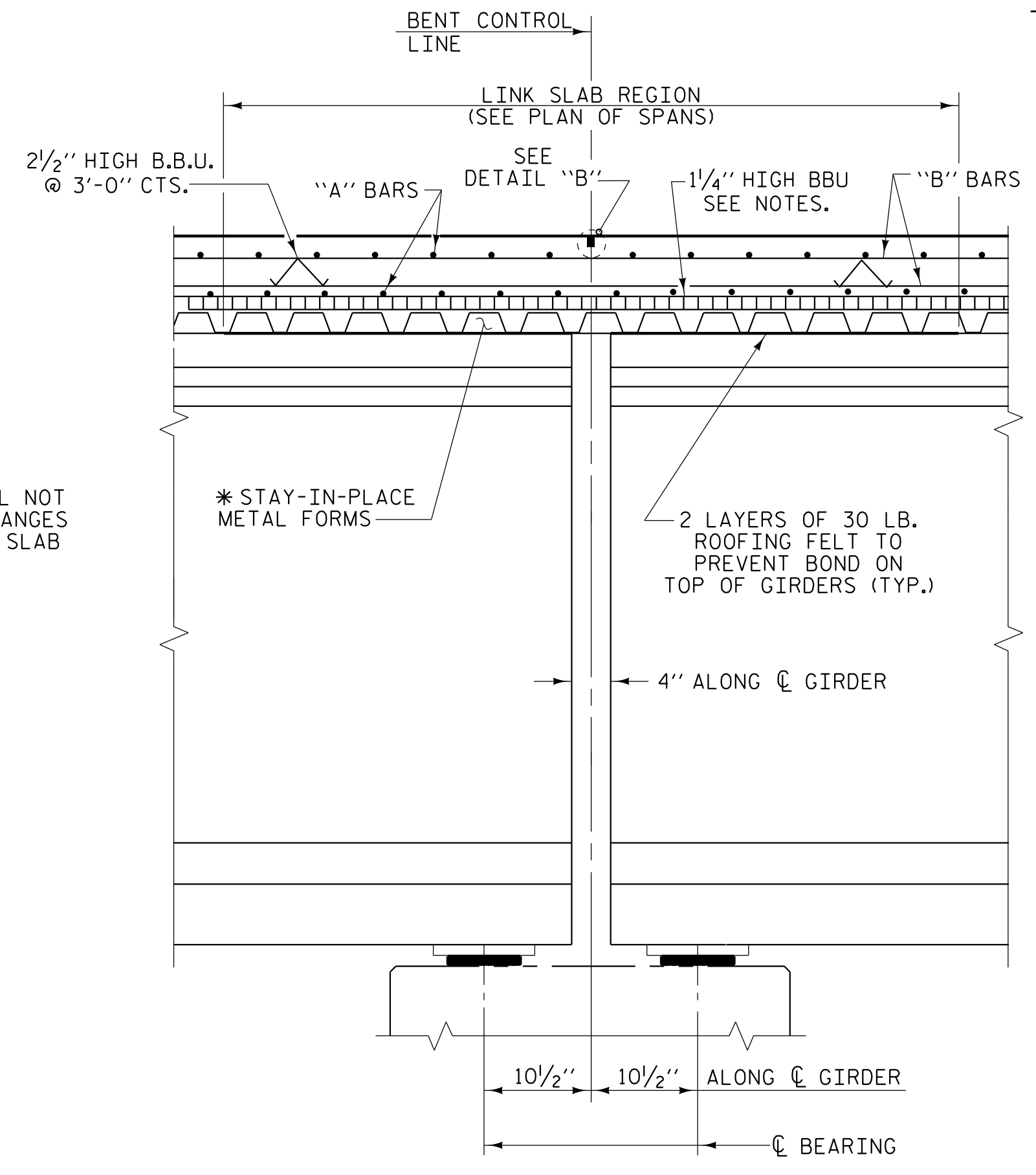
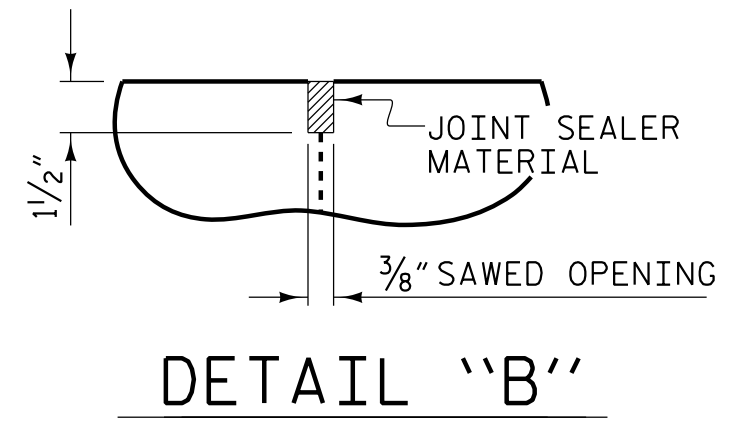


TYPICAL HALF SECTION
(SHOWING LINK SLAB)



SECTION AT BENT



DETAIL "B"

A 1 1/2" DEEP CONTRACTION JOINT AT BENT CONTROL LINE SHALL BE SAWN WITHIN 24 HOURS OF POURING THE DECK. THE JOINT SHALL BE FILLED WITH JOINT SEALER MATERIAL. THE JOINT SEALER MATERIAL SHALL CONFORM TO THE REQUIREMENTS OF SECTION 1028-3 OF THE STANDARD SPECIFICATIONS.

* STAY-IN-PLACE FORMS SHALL NOT BE WELDED TO THE GIRDER FLANGES IN THE REGION OF THE LINK SLAB

* STAY-IN-PLACE METAL FORMS

2 LAYERS OF 30 LB. ROOFING FELT TO PREVENT BOND ON TOP OF GIRDERS (TYP.)

PROJECT NO. I-5987B
ROBESON COUNTY
 STATION: 617+12.20 -L- POT

SHEET 5 OF 6

STATE OF NORTH CAROLINA
 DEPARTMENT OF TRANSPORTATION
 RALEIGH

SUPERSTRUCTURE
 TYPICAL SECTION

PLANS PREPARED BY:

NV5

NV5 ENGINEERS & CONSULTANTS, INC.
 3300 REGENCY PARKWAY, SUITE 100
 CARY, NC 27518
 P: 919.851.1912 www.nv5.com
 NC License # F-1333



REVISIONS						SHEET NO.
NO.	BY:	DATE:	NO.	BY:	DATE:	S6-12
1			3			TOTAL SHEETS
2			4			53

**DOCUMENT NOT CONSIDERED FINAL
 UNLESS ALL SIGNATURES COMPLETED**

DRAWN BY : W.B. ALLEN DATE : 12/21
 CHECKED BY : M.D. METZGER DATE : 12/21
 DESIGN ENGINEER OF RECORD: L. K. AUSTIN DATE : 01/22

4/20/2022 11:04 AM G:\Project\2019\2019\7\03\CLIENT\Structures\I-5987B\15 - NC 2019\987B_SML155_77059.dgn