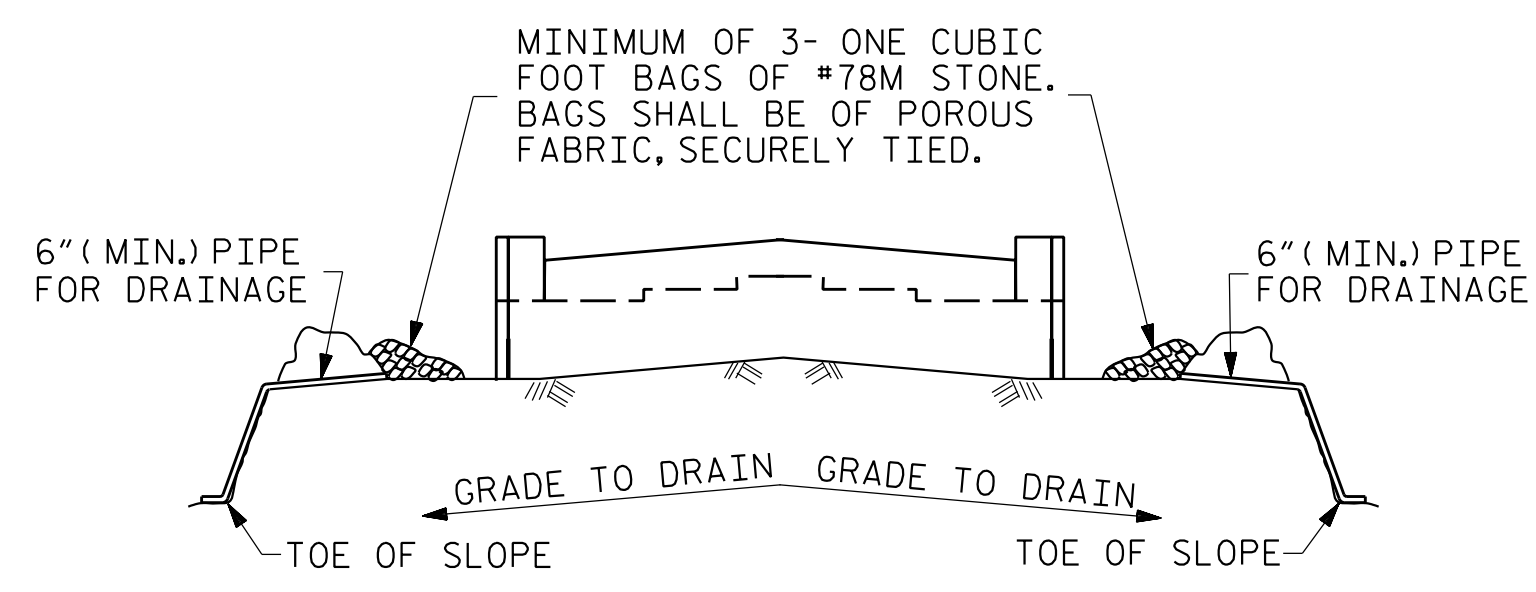


PART SECTION B1-B1

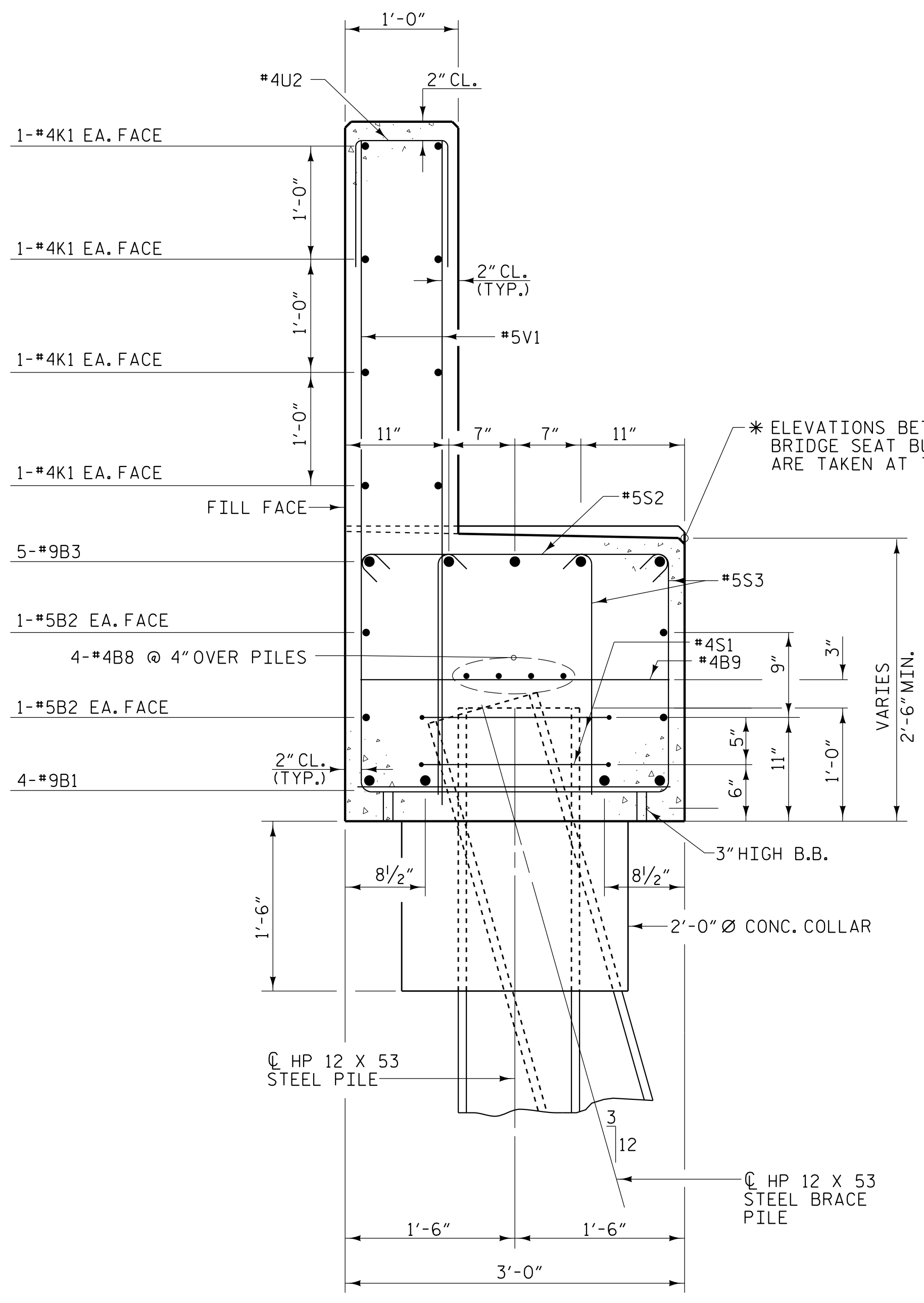


BAGGED STONE AND PIPE SHALL BE PLACED IMMEDIATELY AFTER COMPLETION OF END BENT EXCAVATION. PIPE MAY BE EITHER CONCRETE, CORRUGATED STEEL, CORRUGATED ALUMINUM ALLOY, OR CORRUGATED PLASTIC. PERFORATED PIPE WILL NOT BE ALLOWED.

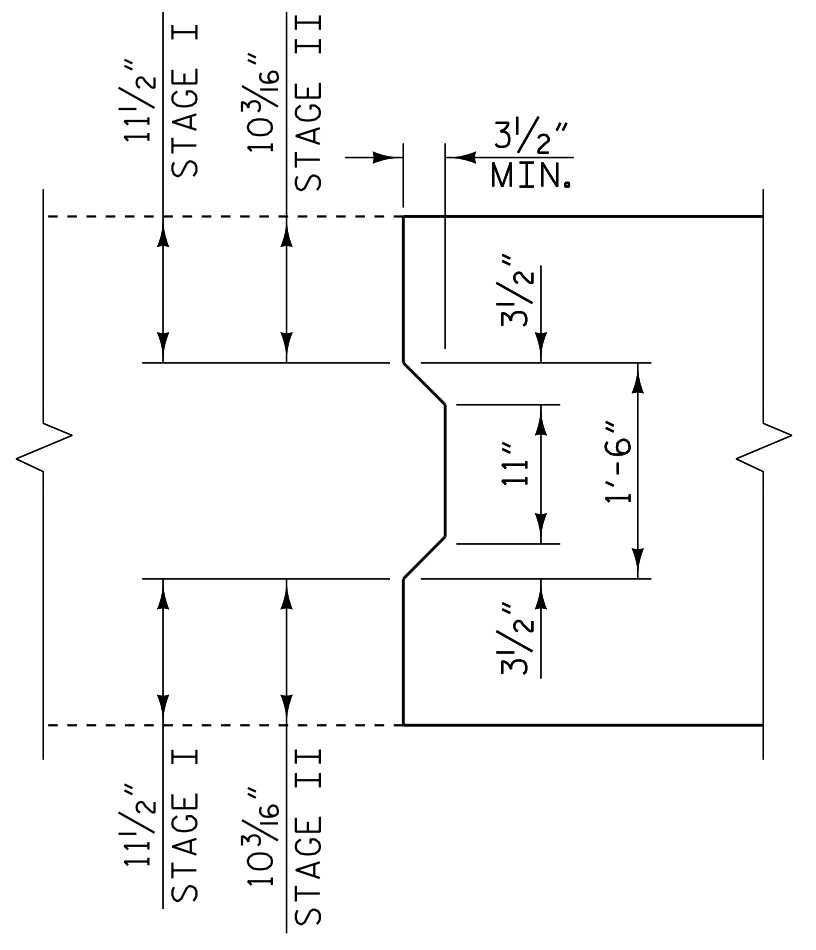
BAGGED STONE SHALL REMAIN IN PLACE UNTIL THE ENGINEER DIRECTS THAT IT BE REMOVED. THE CONTRACTOR SHALL REMOVE AND DISPOSE OF SILT ACCUMULATIONS AT BAGGED STONE WHEN SO DIRECTED BY THE ENGINEER. BAGS SHALL BE REMOVED AND REPLACED WHENEVER THE ENGINEER DETERMINES THAT THEY HAVE DETERIORATED AND LOST THEIR EFFECTIVENESS.

NO SEPARATE PAYMENT WILL BE MADE FOR THIS WORK AND THE ENTIRE COST OF THIS WORK SHALL BE INCLUDED IN THE UNIT CONTRACT PRICE BID FOR THE SEVERAL PAY ITEMS.

TEMPORARY DRAINAGE AT END BENT

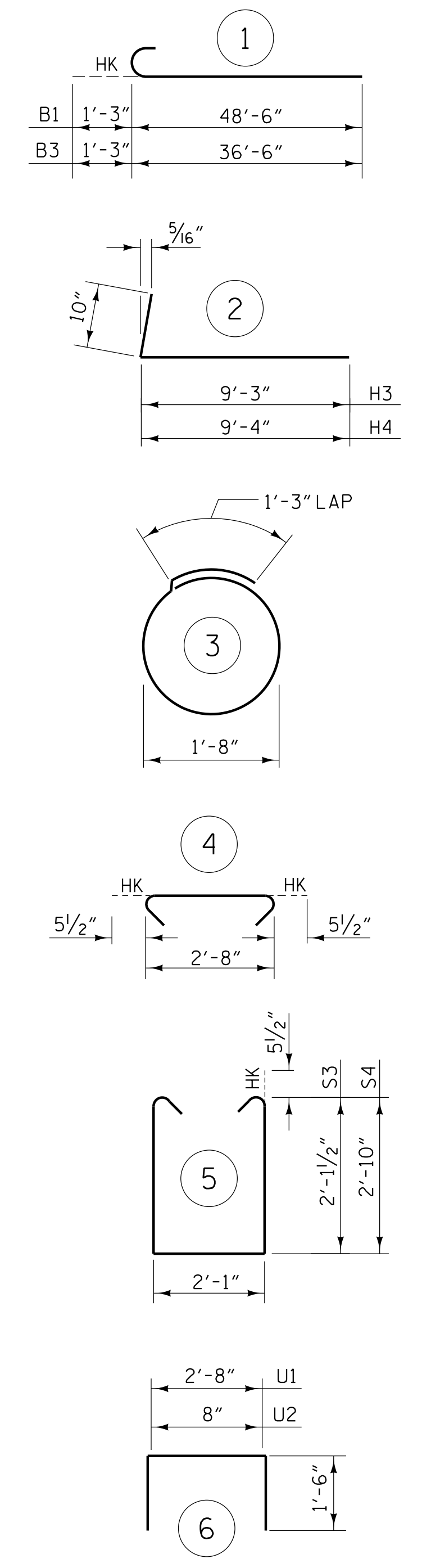


SECTION A1-A1



DETAIL "B"

BAR TYPES



ALL BAR DIMENSIONS ARE OUT TO OUT

BILL OF MATERIAL

END BENT 2 - STAGE I

| BAR | NO. | SIZE | TYPE | LENGTH | WEIGHT |
|-------------------------|-----|------|------|--------|-----------|
| B1 | 4 | #9 | 1 | 49'-9" | 677 |
| B2 | 4 | #5 | STR | 47'-5" | 198 |
| B3 | 5 | #9 | 1 | 37'-9" | 642 |
| B4 | 2 | #5 | STR | 16'-5" | 34 |
| B5 | 5 | #4 | STR | 11'-5" | 38 |
| B6 | 5 | #9 | STR | 21'-3" | 361 |
| B7 | 5 | #4 | STR | 3'-11" | 13 |
| B8 | 8 | #4 | STR | 24'-8" | 132 |
| B9 | 11 | #4 | STR | 2'-8" | 20 |
| H3 | 10 | #5 | 2 | 10'-1" | 105 |
| H4 | 10 | #5 | 2 | 10'-2" | 106 |
| K1 | 16 | #4 | STR | 23'-1" | 247 |
| K2 | 8 | #4 | STR | 2'-8" | 14 |
| S1 | 10 | #4 | 3 | 6'-6" | 43 |
| S2 | 52 | #5 | 4 | 3'-7" | 194 |
| S3 | 68 | #5 | 5 | 7'-3" | 514 |
| S4 | 36 | #5 | 5 | 8'-8" | 325 |
| U1 | 16 | #4 | 6 | 5'-8" | 61 |
| U2 | 41 | #4 | 6 | 3'-8" | 100 |
| V1 | 82 | #5 | STR | 5'-9" | 492 |
| V2 | 26 | #4 | STR | 7'-5" | 129 |
| TOTAL REINFORCING STEEL | | | | | 4445 lbs. |

| CLASS "A" CONCRETE - CU. YARDS | |
|------------------------------------|---------------|
| POUR 1 (CAP, COLLARS & LOWER WING) | 16.0 CU. YDS. |
| POUR 2 (BACKWALL & UPPER WING) | 8.0 CU. YDS. |
| TOTAL | 24.0 CU. YDS. |

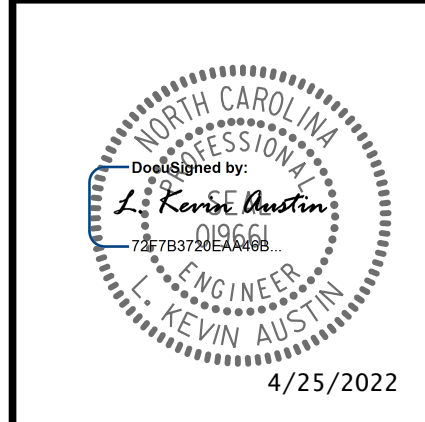
PROJECT NO. I-5987B
ROBESON COUNTY
STATION: 586+14.00 -L- POT

SHEET 4 OF 6

STATE OF NORTH CAROLINA
DEPARTMENT OF TRANSPORTATION
RALEIGH
SUBSTRUCTURE
END BENT 2
DETAILS
STAGE I

| REVISIONS | | | | | | SHEET NO. |
|-----------|-----|-------|-----|-----|-------|--------------|
| NO. | BY: | DATE: | NO. | BY: | DATE: | TOTAL SHEETS |
| 1 | | | 3 | | | 64 |
| 2 | | | 4 | | | |

PLANS PREPARED BY:
NV5
NV5 ENGINEERS & CONSULTANTS, INC.
3300 REGENCY PARKWAY, SUITE 100
CARY, NC 27518
P: 919.851.1912 www.NV5.com
NC License # F-1333



DOCUMENT NOT CONSIDERED FINAL
UNLESS ALL SIGNATURES COMPLETED

DRAWN BY: W. B. ALLEN DATE: 12/21
CHECKED BY: G. F. WILSON DATE: 2/22
DESIGN ENGINEER OF RECORD: L. K. AUSTIN DATE: 2/22

4/25/2022 3:54:47 PM G:\Project\2019\2019\7\03\CLIENT\Structures\I-5987B (Big Marsh Swamp)\5987B.SMU.E01.770536.dgn