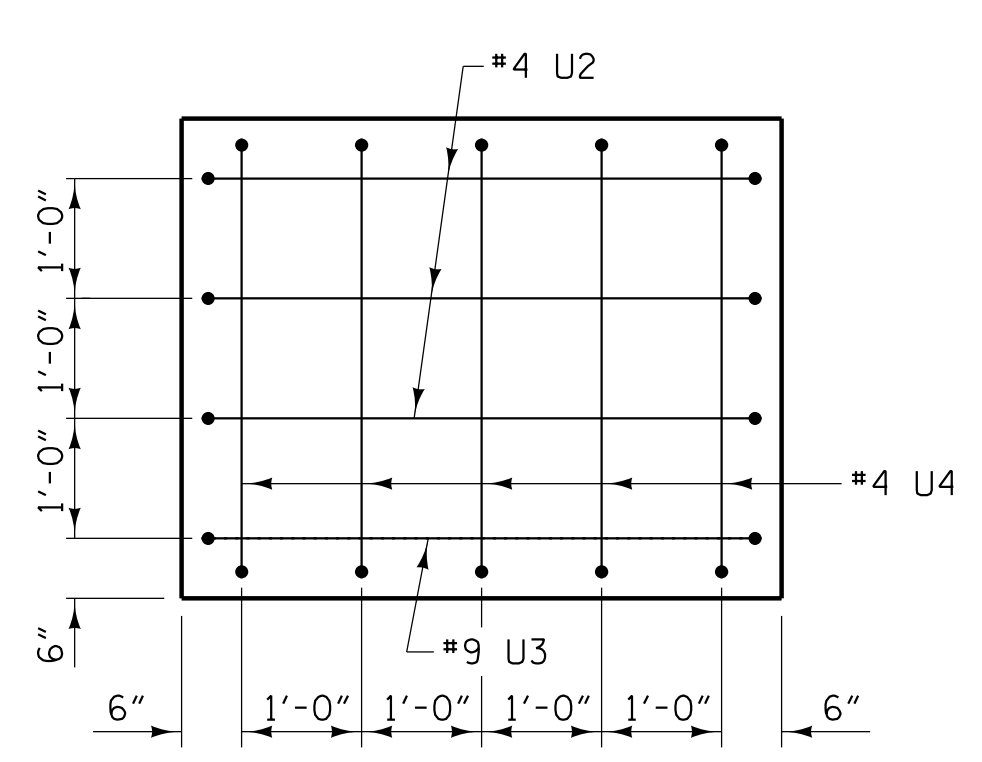
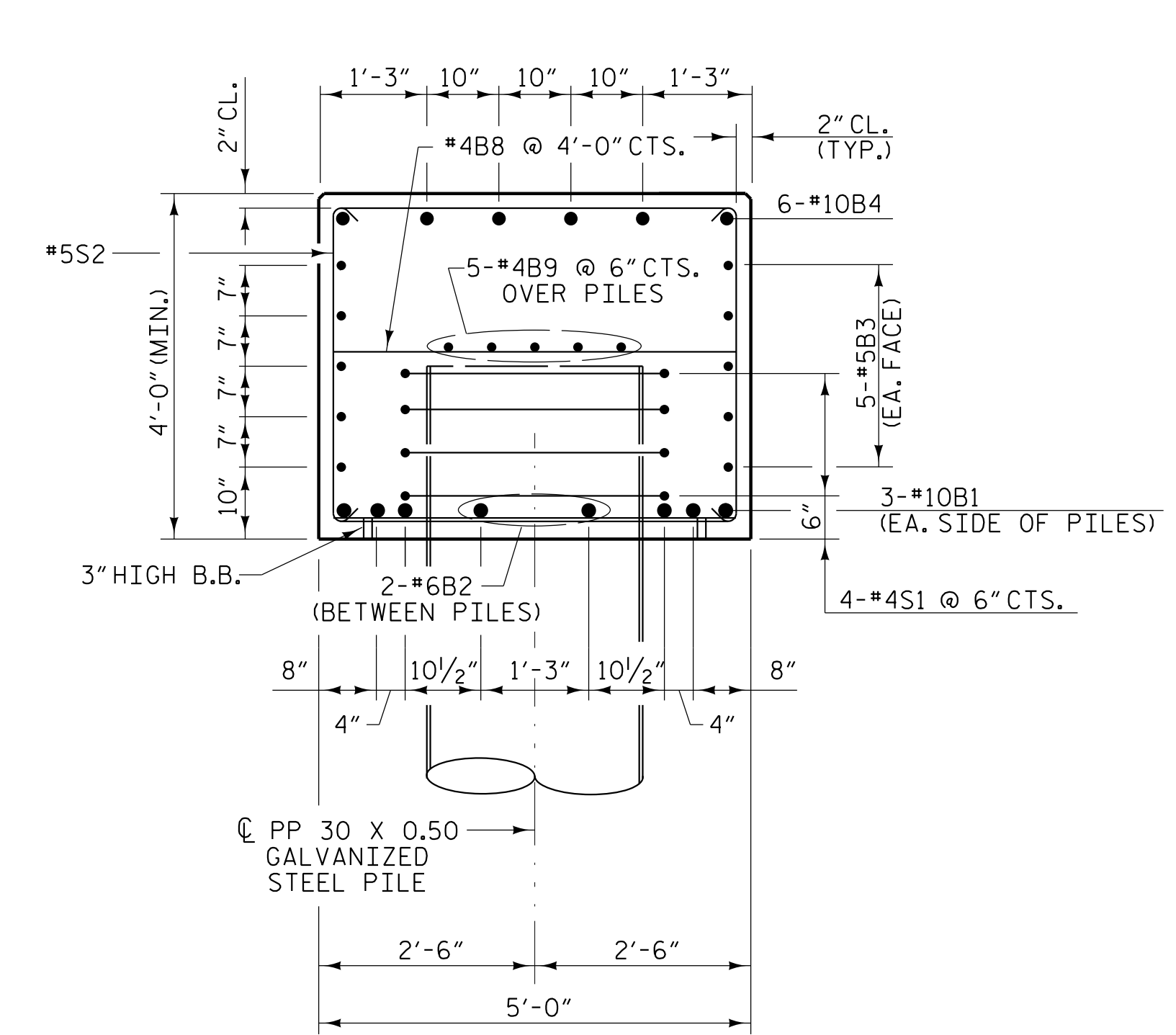


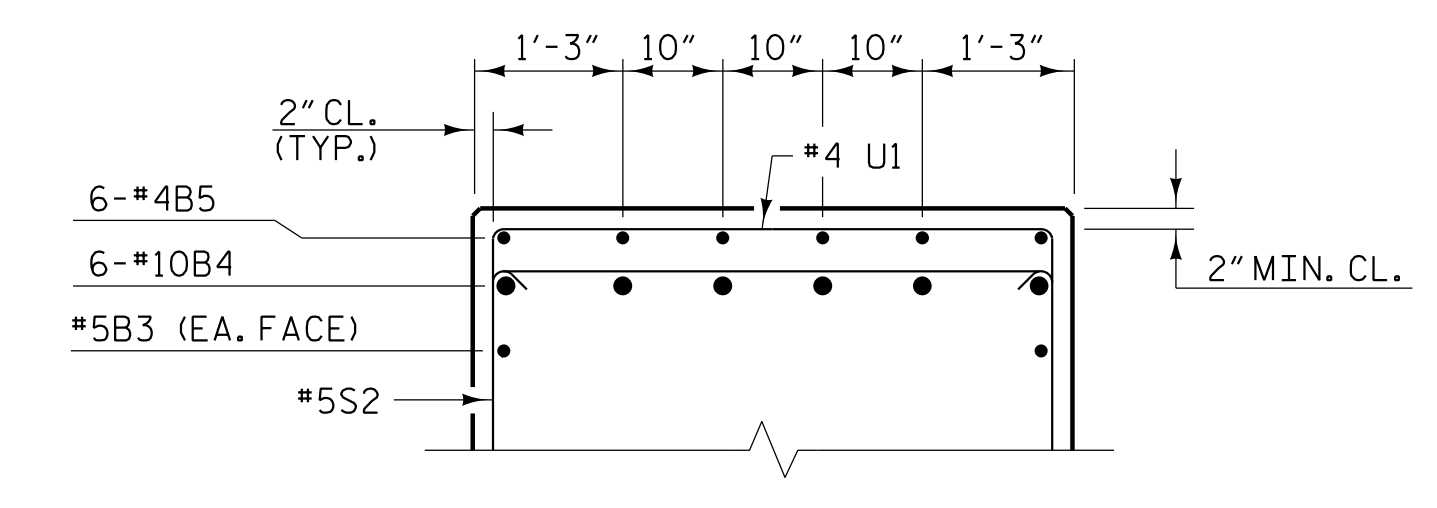
VIEW L1-L1



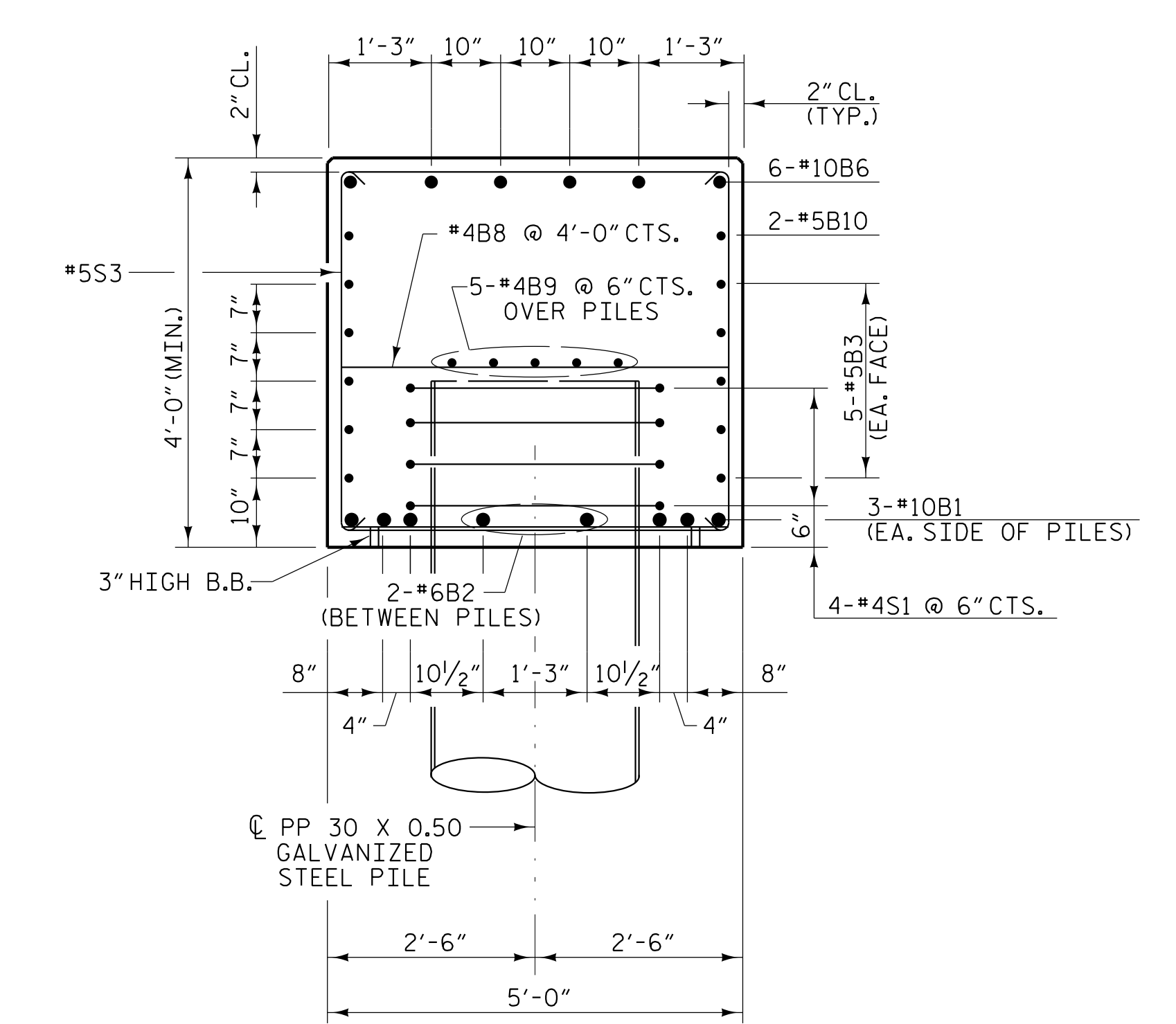
VIEW R1-R1



SECTION A1-A1

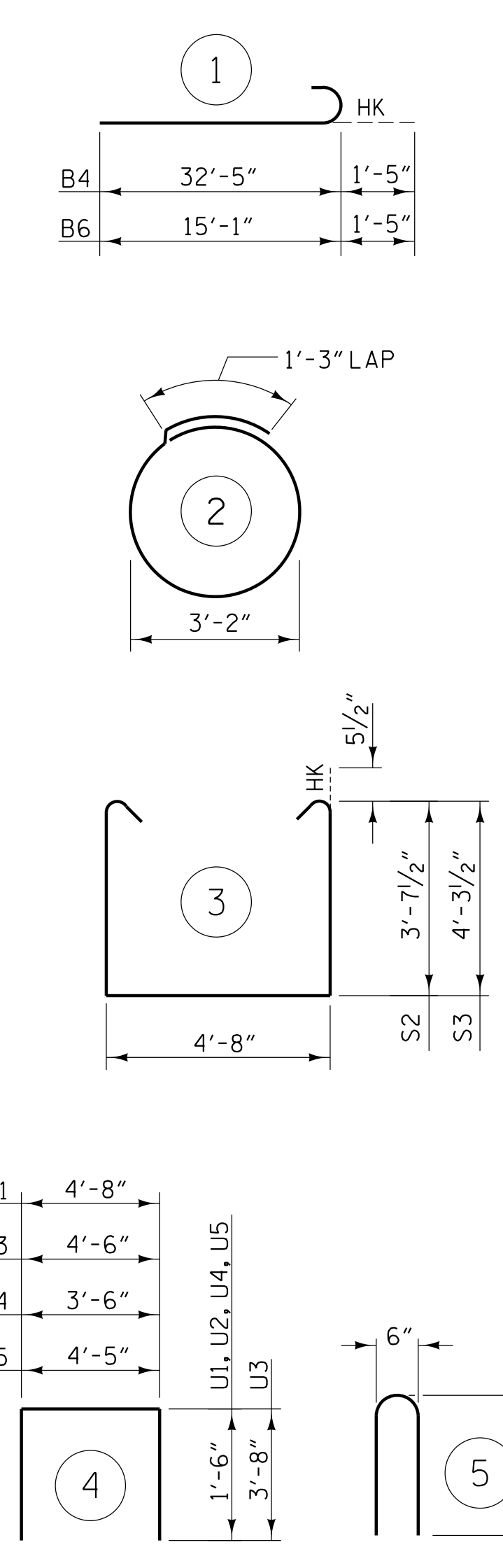


PARTIAL SECTION C1-C1



SECTION B1-B1

BAR TYPES



ALL BAR DIMENSIONS ARE OUT TO OUT

BILL OF MATERIAL

BENT 1 - STAGE I					
BAR	NO.	SIZE	TYPE	LENGTH	WEIGHT
B1	6	#10	STR	38'-8"	998
B2	6	#6	STR	8'-9"	79
B3	10	#5	STR	38'-8"	403
B4	6	#10	1	33'-10"	874
B5	6	#4	STR	11'-5"	46
B6	6	#10	1	16'-6"	426
B7	6	#4	STR	3'-6"	14
B8	10	#4	STR	4'-8"	31
B9	5	#4	STR	38'-8"	129
B10	2	#5	STR	12'-3"	26
S1	16	#4	2	10'-8"	114
S2	24	#5	3	12'-10"	321
S3	13	#5	3	14'-2"	192
U1	33	#4	4	7'-8"	169
U2	7	#4	4	7'-6"	35
U3	2	#9	4	11'-10"	80
U4	5	#4	4	6'-6"	22
U5	5	#4	4	7'-5"	25
U8	64	#6	5	4'-10"	465

TOTAL REINFORCING STEEL 4449 LB.

TOTAL CLASS "A" CONCRETE 31.6 CU. YDS.

PLANS PREPARED BY:

NV5 ENGINEERS & CONSULTANTS, INC.
3300 REGENCY PARKWAY, SUITE 100
CARY, NC 27518
P: 919.851.1912 www.NV5.com
NC License # F-1333
Formerly CALYX Engineers & Consultants

PROJECT NO. I-5987B
ROBESON COUNTY
STATION: 586+14.00 -L- POT

SHEET 2 OF 6

STATE OF NORTH CAROLINA
DEPARTMENT OF TRANSPORTATION
RALEIGH

SUBSTRUCTURE
BENT 1
DETAILS
STAGE I

REVISIONS						SHEET NO.
NO.	BY:	DATE:	NO.	BY:	DATE:	TOTAL SHEETS
1			3			64
2			4			

DOCUMENT NOT CONSIDERED FINAL
UNLESS ALL SIGNATURES COMPLETED

4/25/2022

4/25/2022 3:50:03 PM G:\Project\1208\20957\03\CLIENT\Structures\I-5987B (Big Marsh Swamp)\5987B_SMU_B2_770536.dgn

DRAWN BY: W. B. ALLEN DATE: 12/21
CHECKED BY: G. F. WILSON DATE: 2/22
DESIGN ENGINEER OF RECORD: L. K. AUSTIN DATE: 2/22