

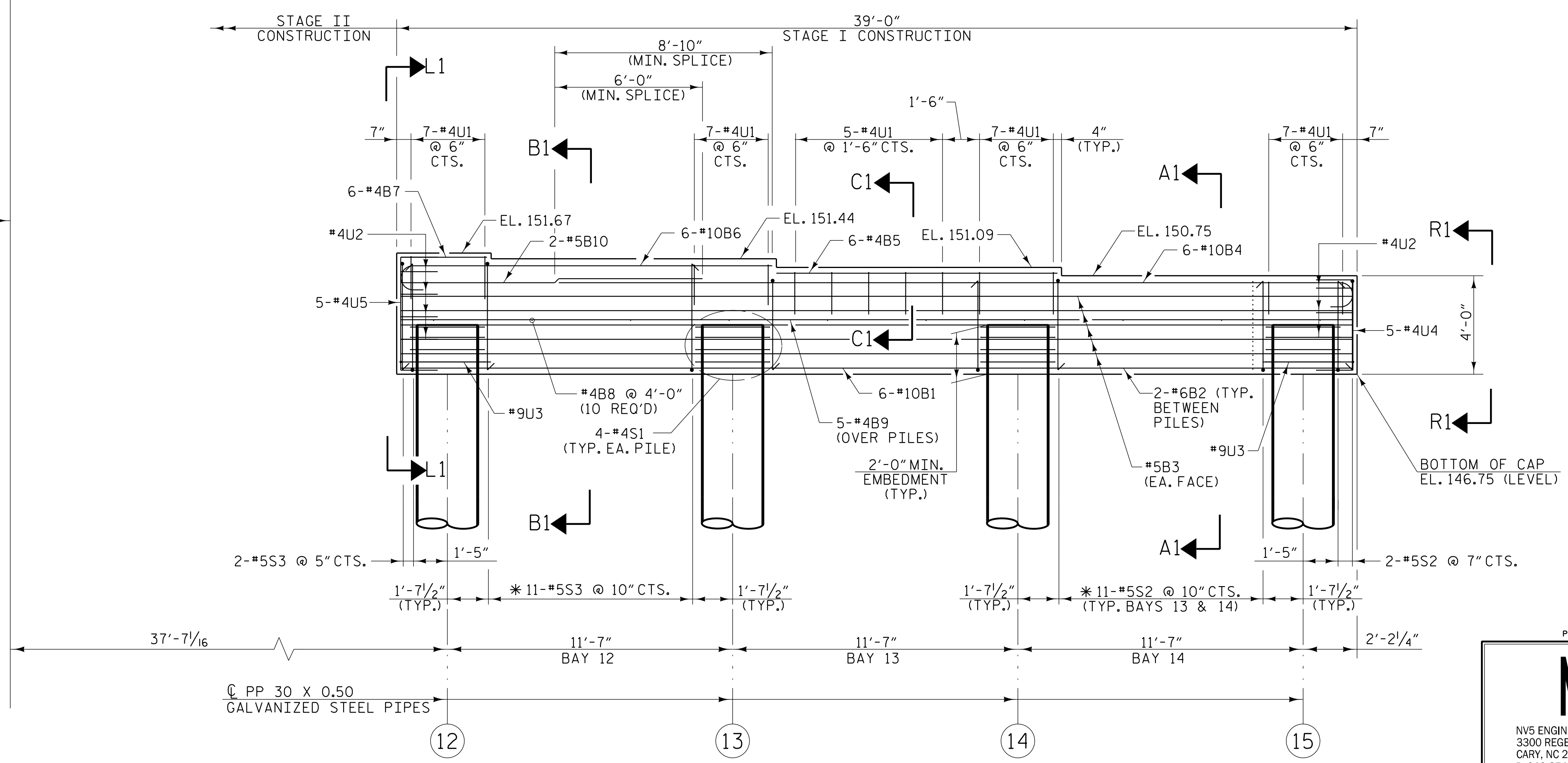
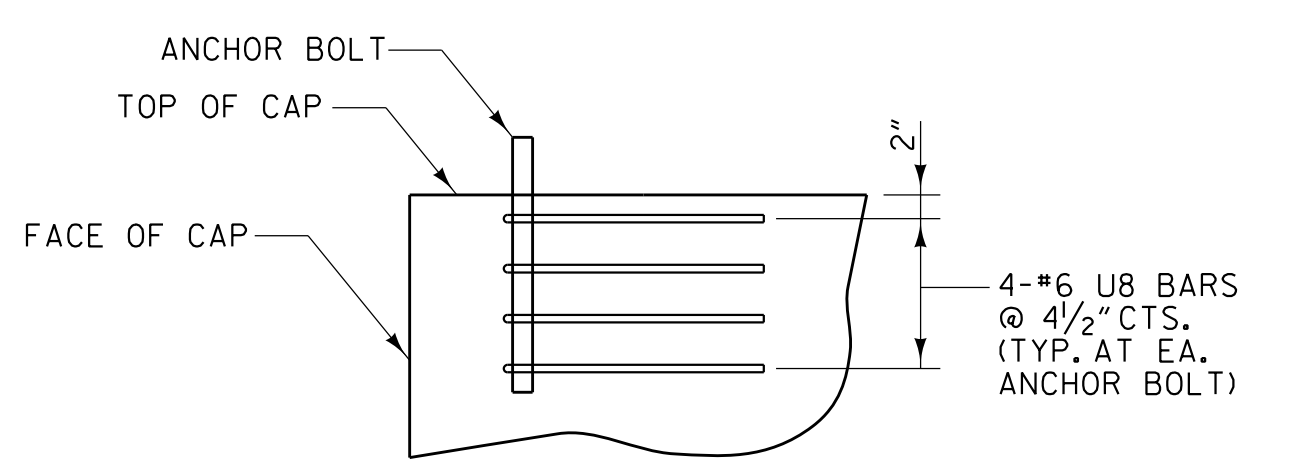
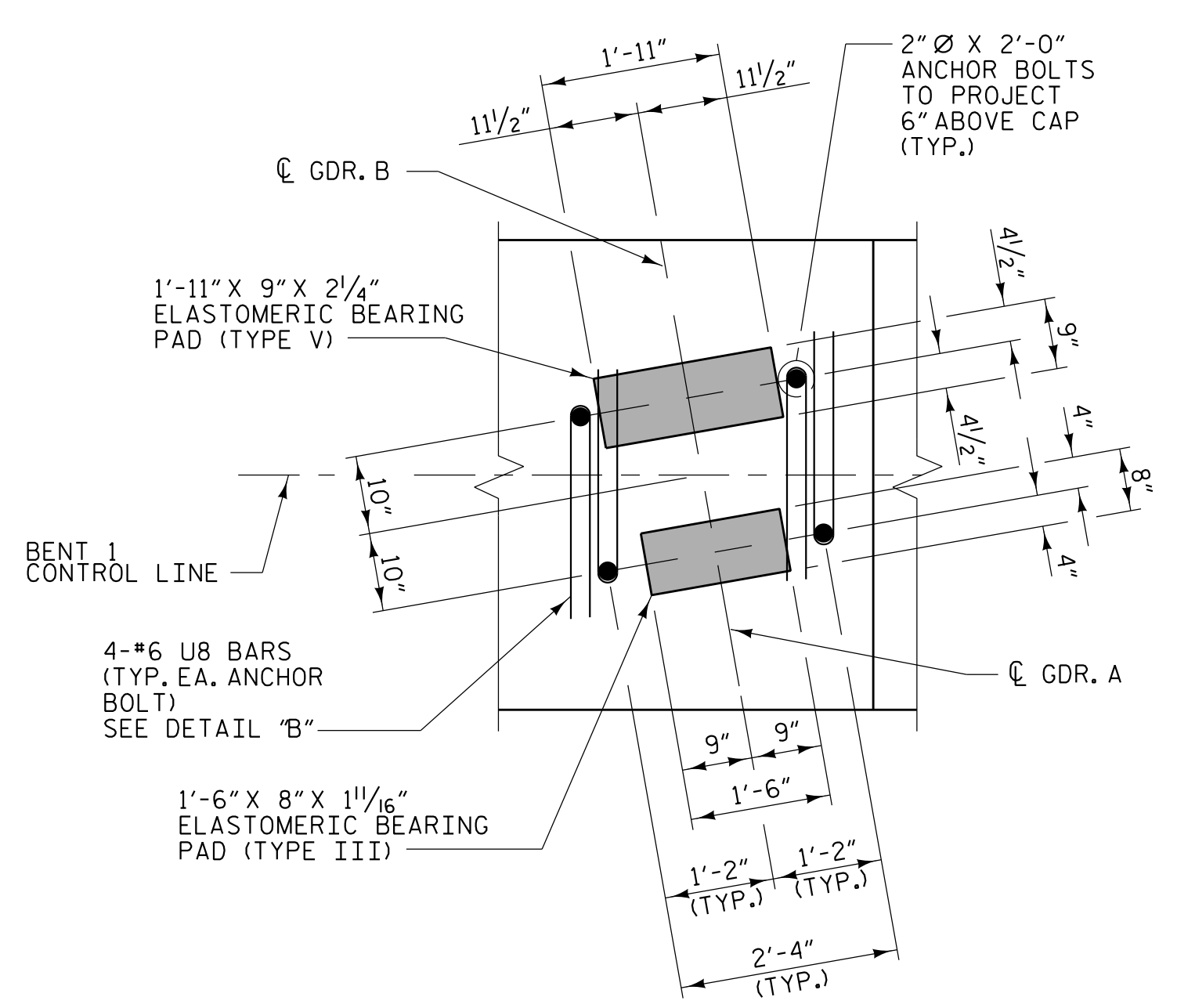
NOTES

STIRRUPS AND "U" BARS IN CAP MAY BE SHIFTED AS NECESSARY TO CLEAR ANCHOR BOLTS.

* INVERT ALTERNATE STIRRUPS.

FOR ADDITIONAL REINFORCING STEEL IN PP 30 X 0.50 GALVANIZED STEEL PILES, SEE SHEET S5-53.

GALVANIZE THE TOP OF EACH INTERIOR BENT PILE A MINIMUM OF 26 FEET. GALVANIZE IN ACCORDANCE WITH SECTION 1076 OF THE STANDARD SPECIFICATIONS.



PROJECT NO. I-5987B

ROBESON COUNTY

STATION: 586+14.00 -L- POT

SHEET 1 OF 6

PLANS PREPARED BY:

NV5

NV5 ENGINEERS & CONSULTANTS, INC.
3300 REGENCY PARKWAY, SUITE 100
CARY, NC 27518
P: 919.851.1912 www.NV5.com
NC License # F-1333



STATE OF NORTH CAROLINA
DEPARTMENT OF TRANSPORTATION
RALEIGH

**SUBSTRUCTURE
BENT 1
STAGE I**

REVISIONS						SHEET NO.
NO.	BY:	DATE:	NO.	BY:	DATE:	TOTAL SHEETS
1			3			64
2			4			

DRAWN BY: J.A. PANDOLI DATE: 2/22

CHECKED BY: G.F. WILSON DATE: 2/22

DESIGN ENGINEER OF RECORD: L.K. AUSTIN DATE: 2/22

**DOCUMENT NOT CONSIDERED FINAL
UNLESS ALL SIGNATURES COMPLETED**

⊕ INDICATES PILE NUMBER

4/25/2022 6:04:48 PM G:\Project\2019\2019\27\03\CLIENT\Structures\I-5987B (Big Marsh Swamp)\I5987B.SMU.B1.770536.dgn