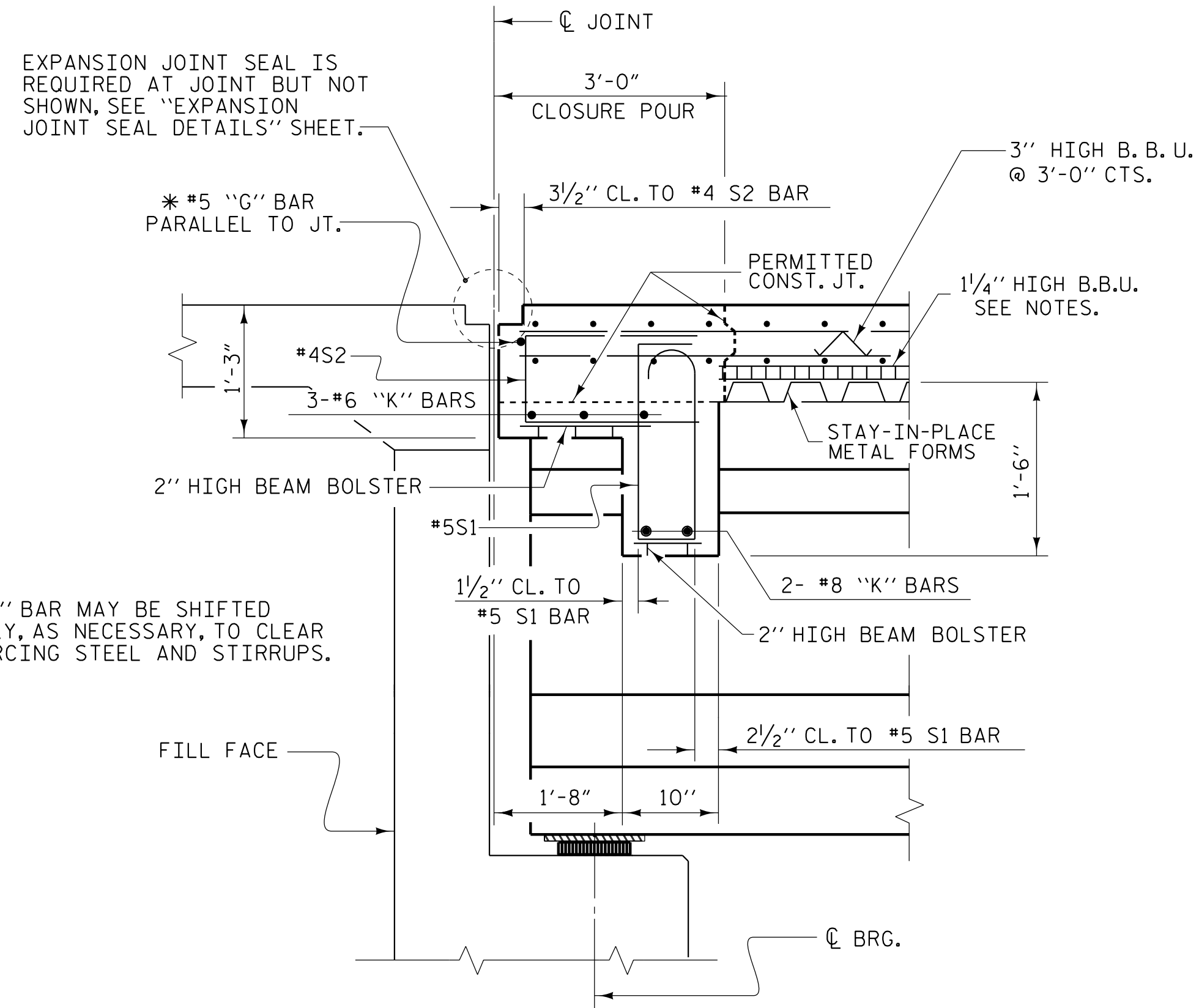


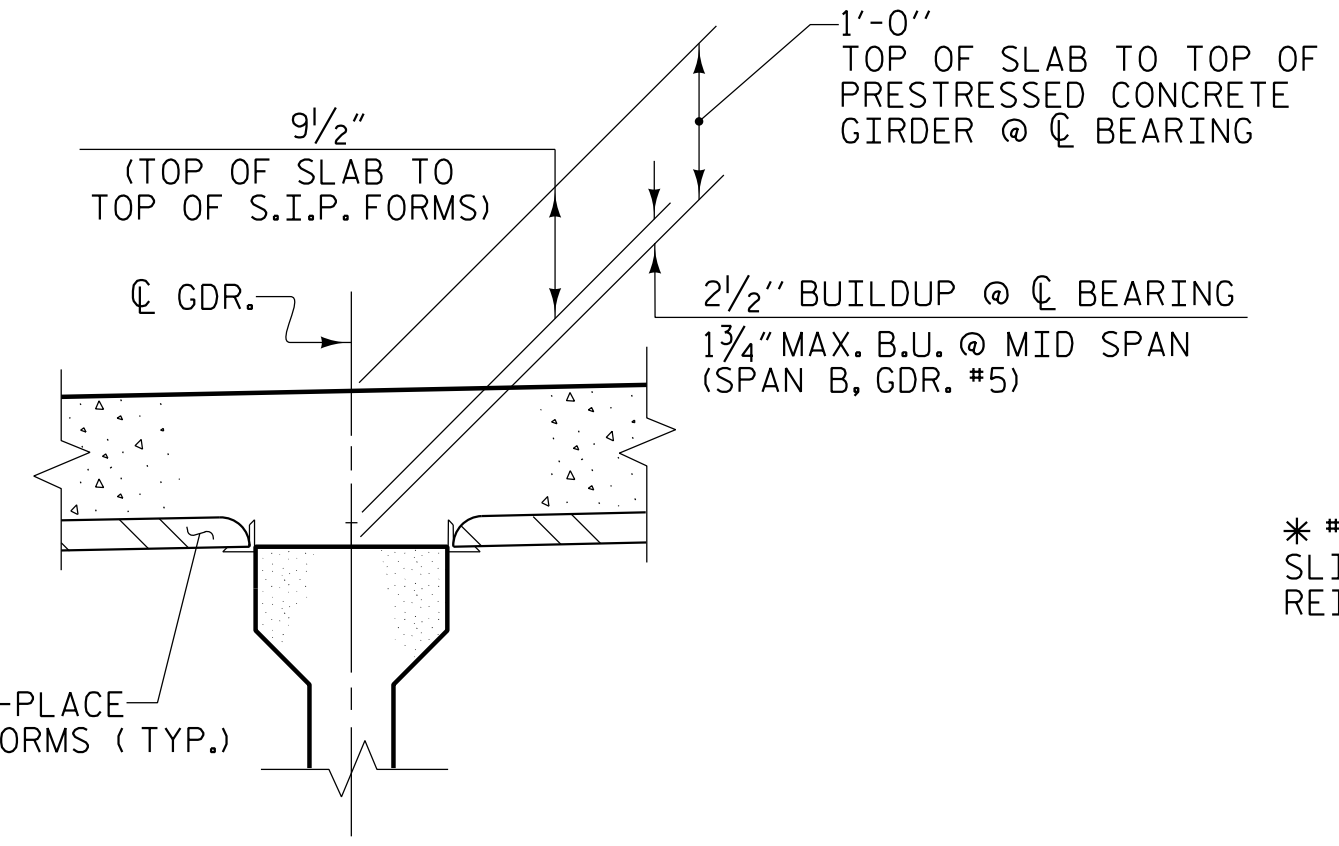
TYPICAL HALF SECTION
(SHOWING END BENT DIAPHRAGMS)



SECTION THRU END BENT DIAPHRAGMS

NOTES:

- PROVIDE 1/4" HIGH BEAM BOLSTERS UPPER (BBU) AT 4'-0" CENTERS ATOP THE METAL STAY-IN-PLACE FORMS TO SUPPORT THE BOTTOM MAT OF "A" BARS. WHEN USING REMOVABLE FORMS, PROVIDE CONTINUOUS HIGH CHAIRS FOR METAL DECK (C.H.C.M.) @ 4'-0" CTS. WITH A HEIGHT TO SUPPORT THE BOTTOM MAT OF "A" BARS A CLEAR DISTANCE OF 2 1/2" ABOVE THE TOP OF THE REMOVABLE FORM.
- LONGITUDINAL STEEL MAY BE SHIFTED AS NECESSARY TO AVOID INTERFERENCE WITH STIRRUPS IN PRESTRESSED CONCRETE GIRDERS.
- PREVIOUSLY CAST CONCRETE IN A CONTINUOUS UNIT SHALL HAVE ATTAINED A MINIMUM COMPRESSIVE STRENGTH OF 3,000 PSI BEFORE ADDITIONAL CONCRETE IS CAST IN THE UNIT.



DETAIL "A"

PROJECT NO. **I-5987B**
ROBESON COUNTY
 STATION: **586+14.00 -L- POT**

SHEET 1 OF 6
 STATE OF NORTH CAROLINA
 DEPARTMENT OF TRANSPORTATION
 RALEIGH
SUPERSTRUCTURE
TYPICAL SECTION

REVISIONS						SHEET NO.
NO.	BY:	DATE:	NO.	BY:	DATE:	S5-9
1			3			TOTAL SHEETS
2			4			64



DOCUMENT NOT CONSIDERED FINAL UNLESS ALL SIGNATURES COMPLETED

DRAWN BY : **W. B. ALLEN** DATE : **5/21**
 CHECKED BY : **G. F. WILSON** DATE : **5/21**
 DESIGN ENGINEER OF RECORD: **L. K. AUSTIN** DATE : **2/22**

4/22/2022 5:26:02 PM G:\Project\2019\2019\7\03\CLIENT\Structures\I-5987B (Big Marsh Swamp)\5987B.SMU.TSI.770536.dgn