

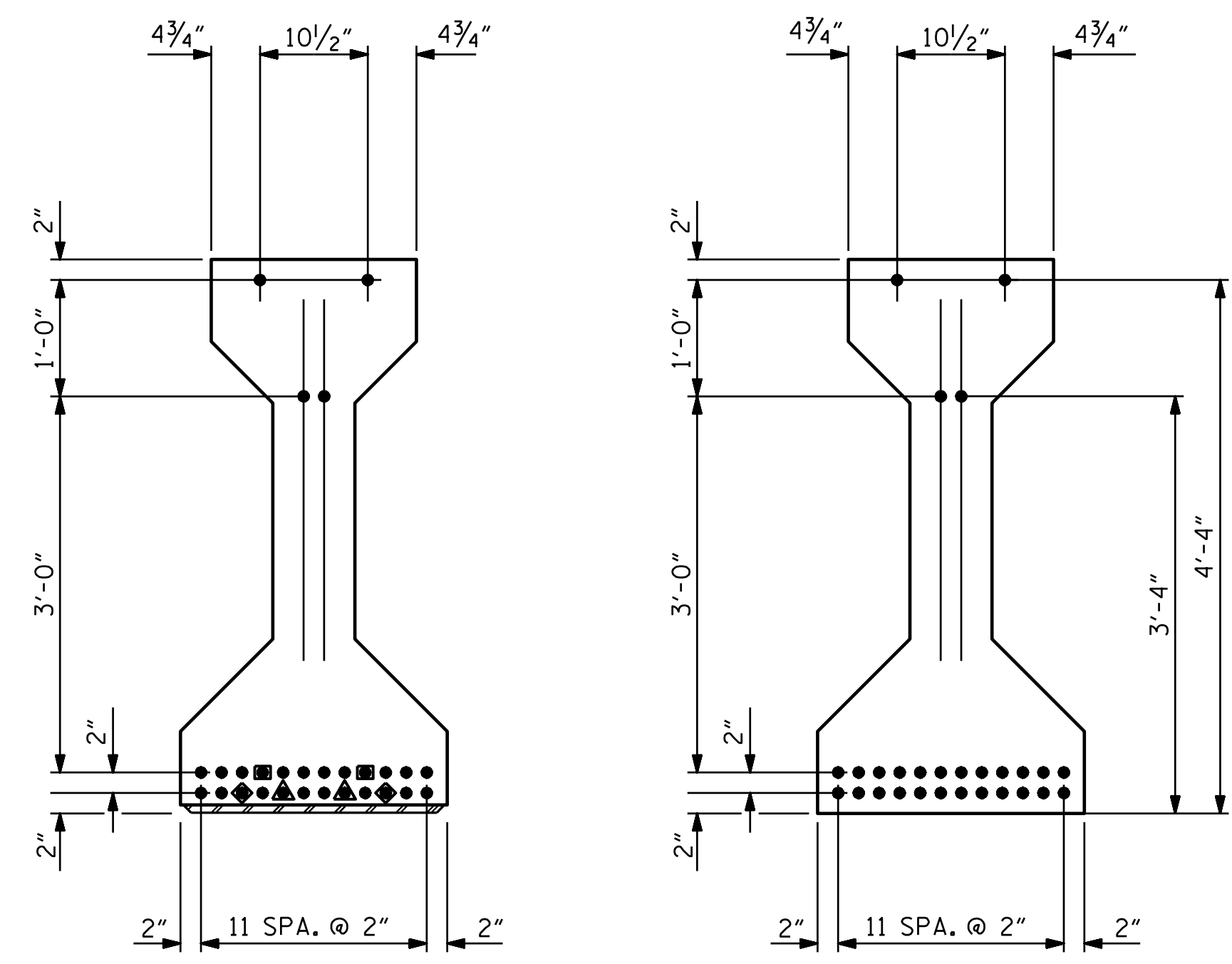
SECTION A-A

SECTION B-B

* FOR S7 BARS, SEE
DETAIL "A" OF
"DEAD LOAD DEFLECTION TABLES
AND PRESTRESSED CONCRETE
GIRDER DETAILS" SHEET

DEBONDING LEGEND

- FULLY BONDED STRANDS
- STRANDS DEBONDED FOR 4'-0" FROM END OF GIRDER
- ◆ STRANDS DEBONDED FOR 6'-0" FROM END OF GIRDER
- ▲ STRANDS DEBONDED FOR 8'-0" FROM END OF GIRDER



AT END OF GIRDER

AT C OF GIRDER

0.6" Ø LOW RELAXATION STRAND LAYOUT

(28 STRANDS REQUIRED, ALL STRAIGHT)

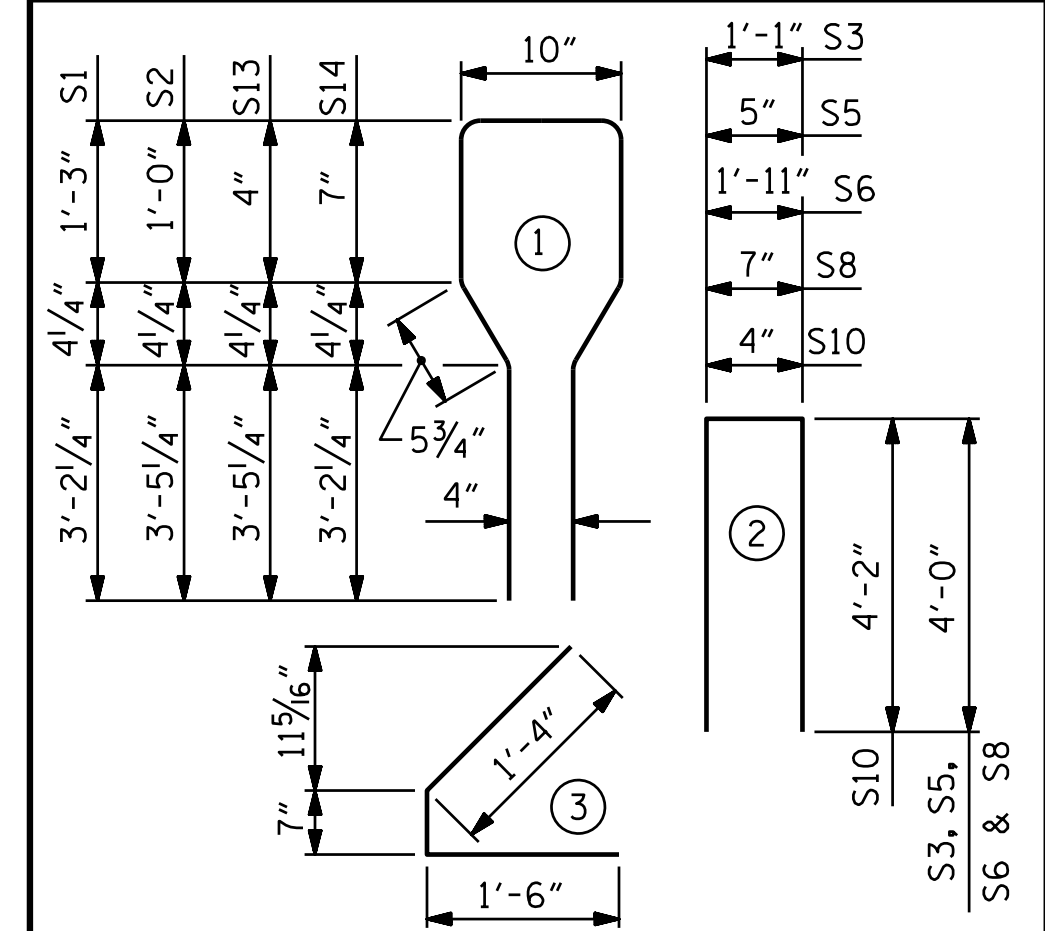
0.6" Ø L. R. GRADE 270 STRANDS		
AREA (SQUARE INCHES)	ULTIMATE STRENGTH (LBS. PER STRAND)	APPLIED PRESTRESS (LBS. PER STRAND)
0.217	58,600	43,950

REINFORCING STEEL FOR ONE GIRDER					
BAR	NUMBER	SIZE	TYPE	LENGTH	WEIGHT
S1	60	#4	1	10'-8"	428
S2	7	#6	1	10'-8"	112
S3	4	#4	2	9'-1"	24
S4	32	#4	3	3'-5"	73
S5	6	#4	2	8'-5"	34
S6	1	#4	2	9'-11"	7
* S7	12	#5	STR	3'-8"	46
S8	4	#4	2	8'-7"	23
S9	1	#3	STR	1'-10"	1
S10	2	#5	2	8'-8"	18
S11	5	#4	STR	7'-0"	23
S12	1	#3	STR	1'-4"	1
S13	7	#6	1	9'-4"	98
S14	3	#4	1	9'-4"	19

* NOTE: S7 BARS SHALL BE BENT BEFORE SHIPMENT. HEAT BENDING SHALL NOT BE ALLOWED.

BAR TYPES

ALL BAR DIMENSIONS ARE OUT-TO-OUT



QUANTITIES FOR ONE GIRDER

	REINFORCING STEEL	7500 PSI CONCRETE	0.6" Ø L. R. STRANDS
	LB.	C.Y.	No.
EXTERIOR GIRDER	907	16.6	28
INTERIOR GIRDER	907	16.6	28

GIRDERS REQUIRED

NUMBER	LENGTH	TOTAL LENGTH
8	81'-8"	653'-4"

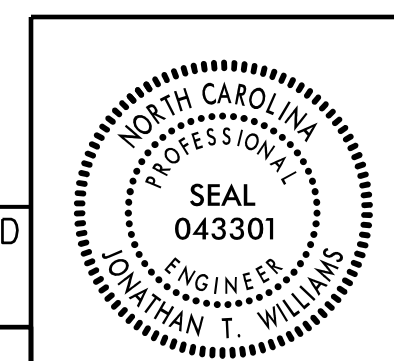
PROJECT NO. I-5987B
ROBESON COUNTY
STATION: 24+76.86 -Y4-

SHEET 1 OF 2

STATE OF NORTH CAROLINA
DEPARTMENT OF TRANSPORTATION
RALEIGH

AASHTO TYPE IV
PRESTRESSED CONCRETE GIRDER

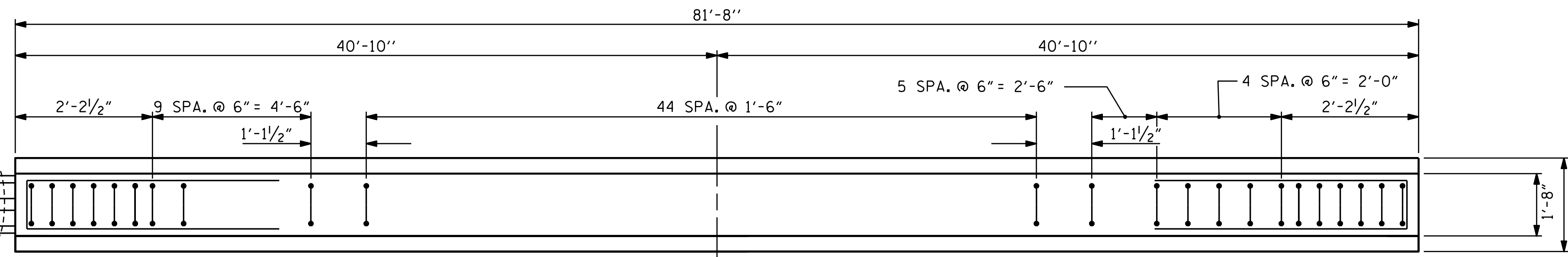
SPANS A & B



DOCUMENT NOT CONSIDERED FINAL UNLESS ALL SIGNATURES COMPLETED

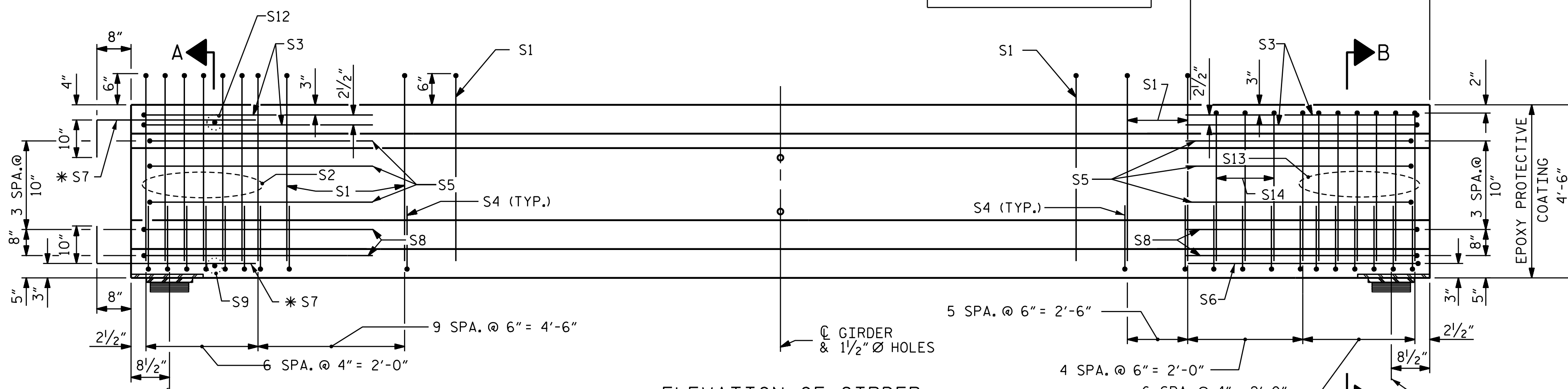
PLANS PREPARED BY:
MOTT MACDONALD
PO Box 700
Fuquay-Varina, NC 27526
(919) 552-2253
www.mottmac.com
LICENSE NO. F-0669

REVISIONS						SHEET NO.
NO.	BY:	DATE:	NO.	BY:	DATE:	S4-12
1			3			TOTAL SHEETS
2			4			29



PLAN OF GIRDER

** DO NOT RAKE TOP OF GIRDER IN THIS AREA



ELEVATION OF GIRDER

(SEE PARTIAL ELEVATION FOR ADDITIONAL "S" BARS. SPAN A GIRDERS SHOWN, SPAN B GIRDERS SIMILAR BY ROTATION)

INTEGRAL END BENT

157077
 I:\157077\1-5987B\1-5987B Structures\Plans\1-5987B-SMU.G1.770154.dgn
 5/18/2022 10:52:36 AM

DRAWN BY: R. L. DICKE DATE: 5-2021
 CHECKED BY: J. M. ROBINSON DATE: 8-2021
 DESIGN ENGINEER OF RECORD: J. T. WILLIAMS DATE: 8-2021