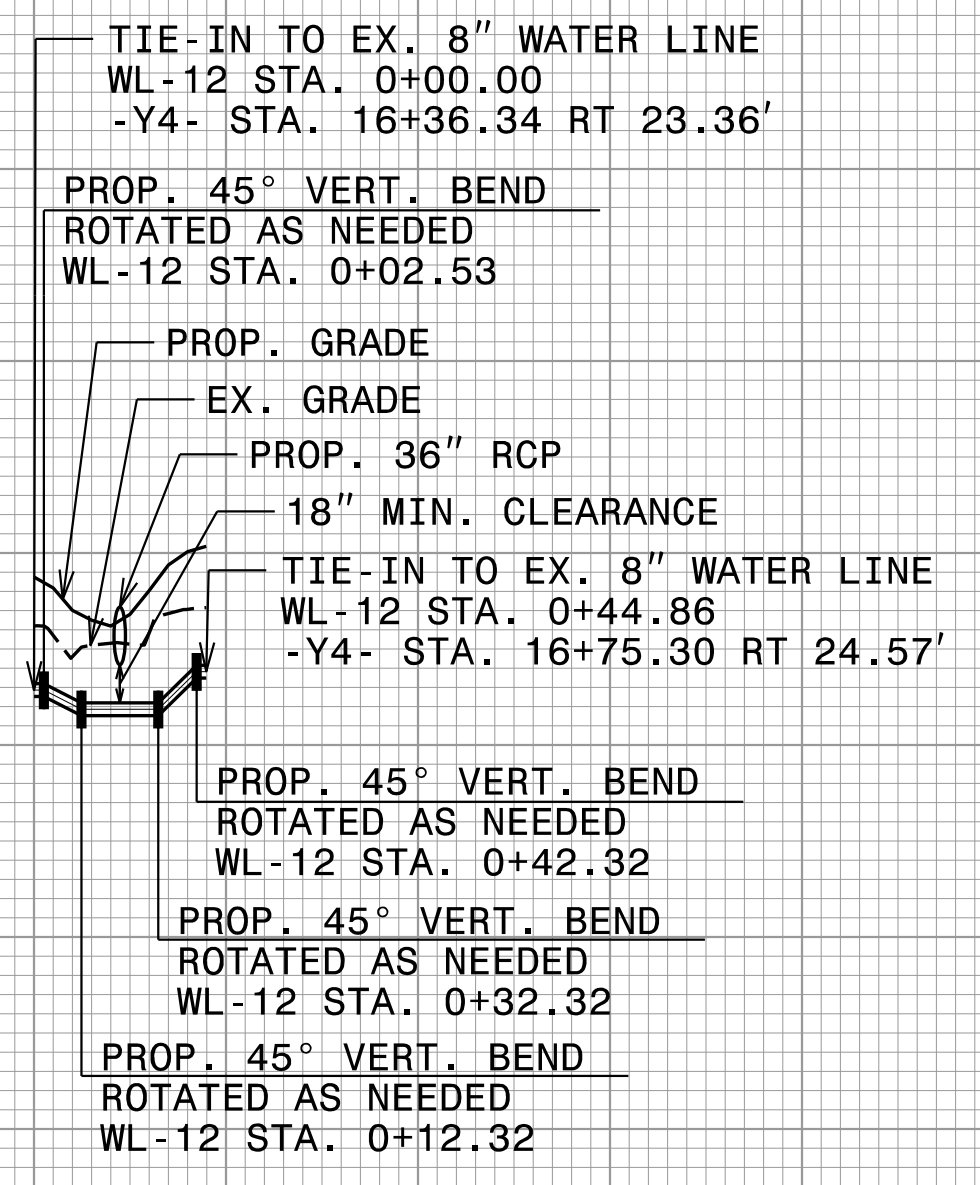


5/14/99

CONTRACTOR TO BACKFILL OVER WATER LINE PRIOR TO TESTING AND PLACING INTO SERVICE WITH MINIMUM 36" OF COVER.

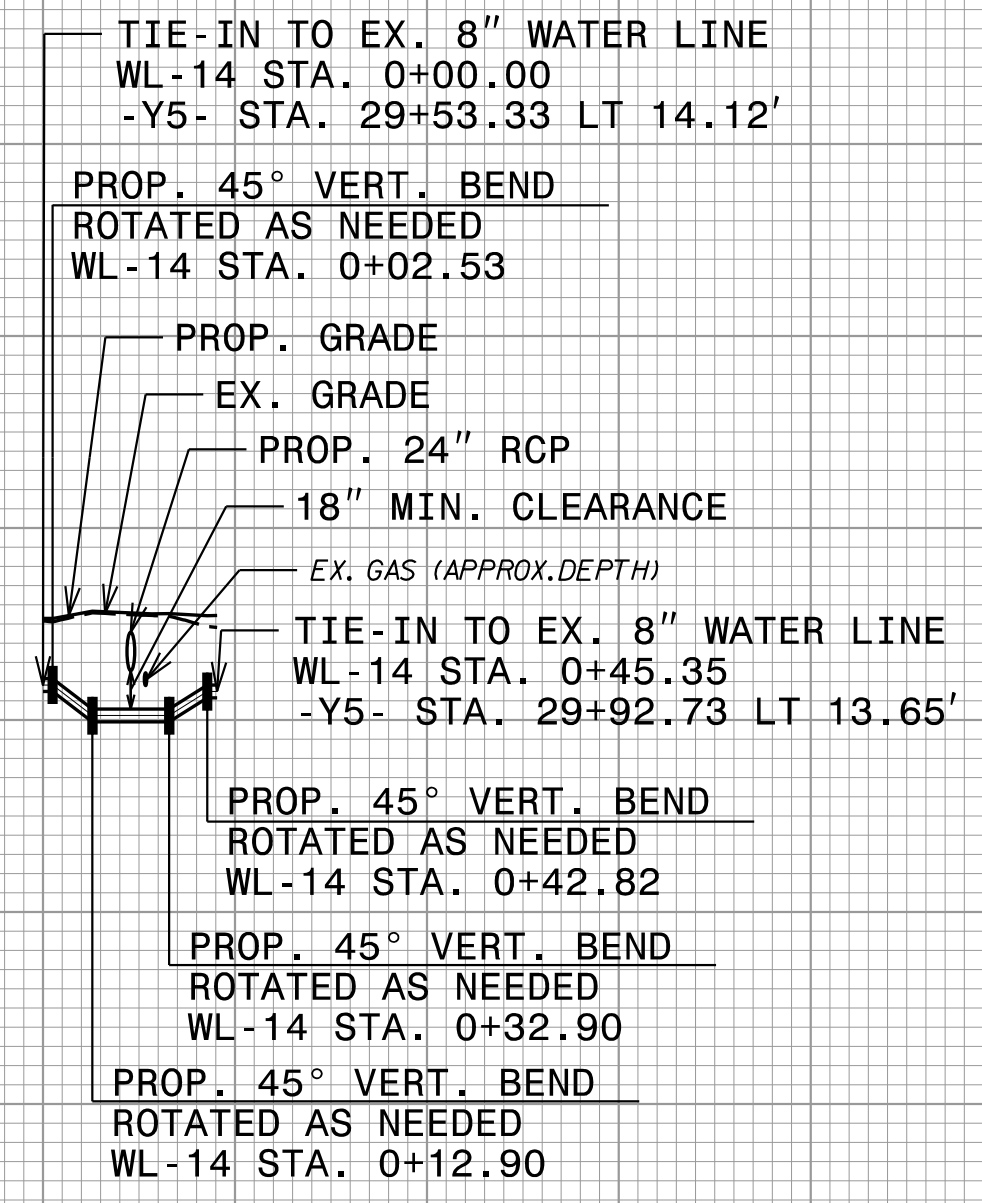
**PROP. 8" WATER LINE
WL-12
ROBESON COUNTY**



SEE SHEET UC-14 FOR WATER PLAN

0+00 0+45

**PROP. 8" WATER LINE
WL-14
TOWN OF ST. PAULS**



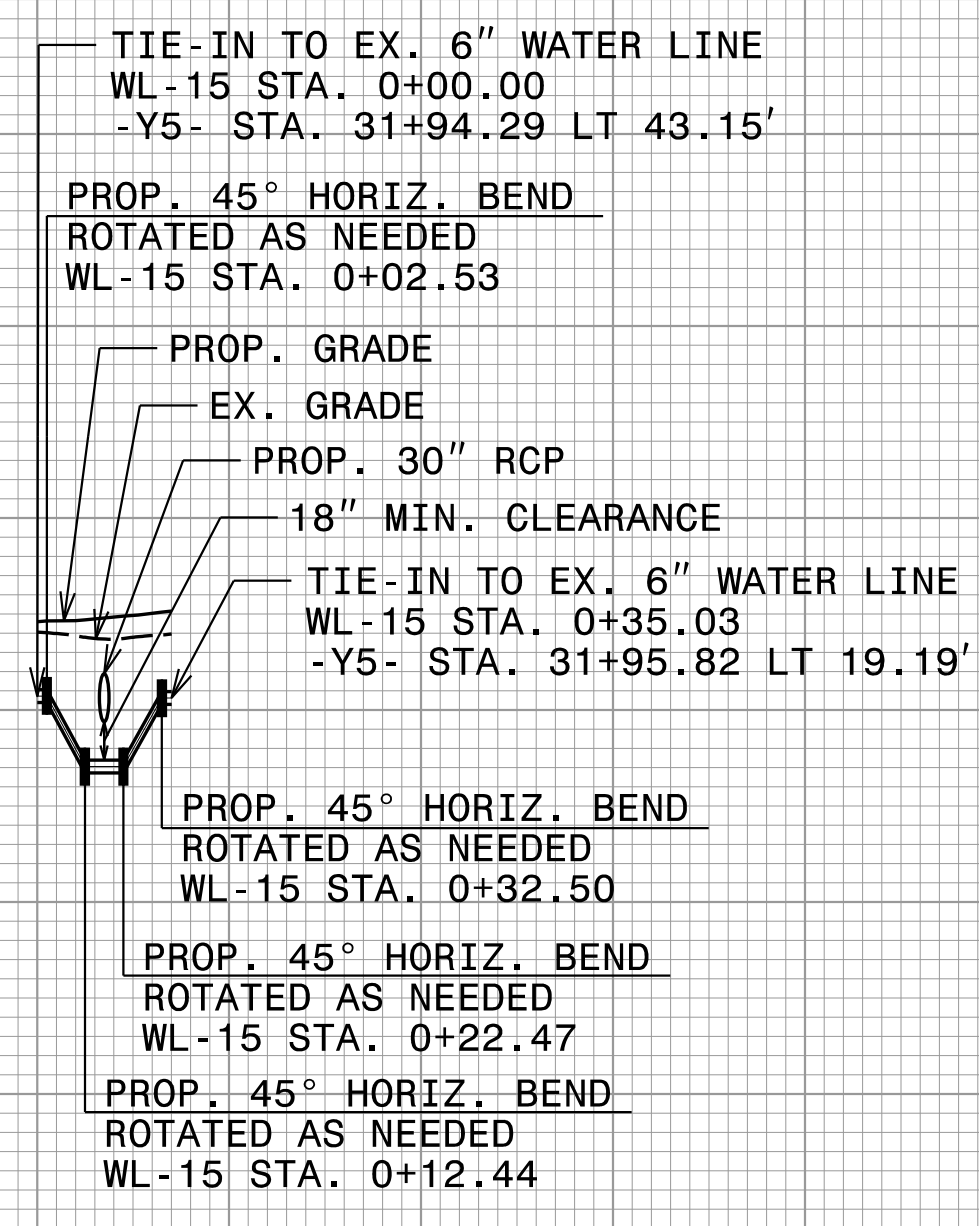
SEE SHEET UC-16 FOR WATER PLAN

0+00 0+45

PROJECT REFERENCE NO. 1-5987B	SHEET NO. UC-25						
DESIGNED BY: BLP							
DRAWN BY: BLP							
CHECKED BY: DLJ							
APPROVED BY:							
REVISED:							
NORTH CAROLINA DEPARTMENT OF TRANSPORTATION UTILITIES ENGINEERING SEC. PHONE: (919) 707-6690 FAX: (919) 250-4151							
UTILITY CONSTRUCTION PLANS ONLY							
DOCUMENT NOT CONSIDERED FINAL UNLESS ALL SIGNATURES COMPLETED							
Prepared in the Office of: <table border="1"> <tr> <td>M</td> <td>PO Box 700</td> </tr> <tr> <td>M</td> <td>Fuquay-Varina, NC 27526</td> </tr> <tr> <td>MACDONALD</td> <td>www.mottmac.com/americas</td> </tr> </table>		M	PO Box 700	M	Fuquay-Varina, NC 27526	MACDONALD	www.mottmac.com/americas
M	PO Box 700						
M	Fuquay-Varina, NC 27526						
MACDONALD	www.mottmac.com/americas						
UTILITY CONSTRUCTION							

3/16/2022
P:\156355\Engineering\UC\Proj\15987b-utl_UC25.dgn

**PROP. 6" WATER LINE
WL-15
TOWN OF ST. PAULS**

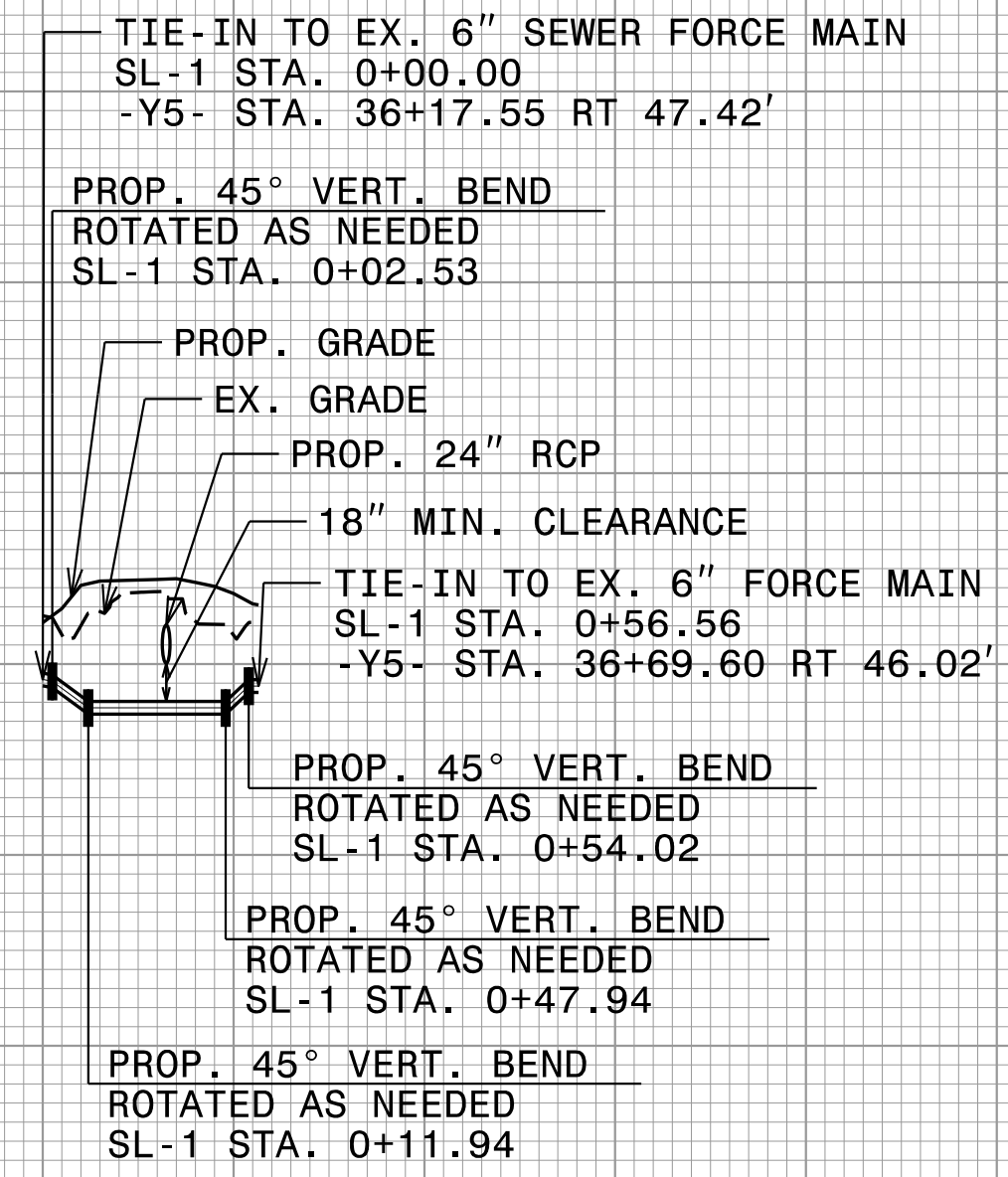


SEE SHEET UC-16 FOR WATER PLAN

0+00

CONTRACTOR TO BACKFILL OVER WATER LINE PRIOR TO TESTING AND PLACING INTO SERVICE WITH MINIMUM 36" OF COVER.

**PROP. 6" SEWER FORCE MAIN
SL-1
TOWN OF ST. PAULS**



SEE SHEET UC-9 FOR SEWER PLAN

0+00 0+50