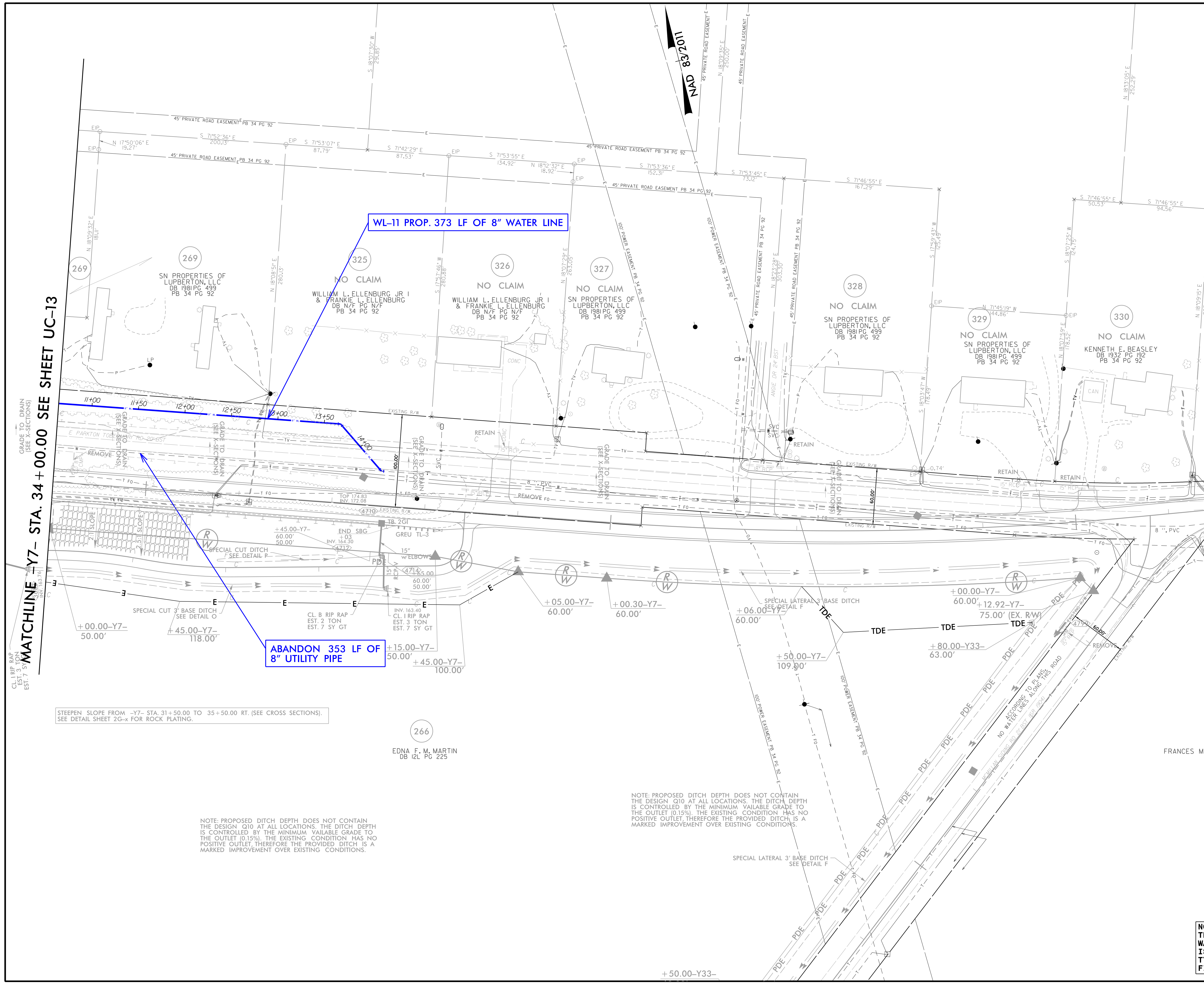


PROJECT REFERENCE NO.	SHEET NO.
I-5987B	UC-19
DESIGNED BY: BLP	
DRAWN BY: BLP	
CHECKED BY: DSJ	
APPROVED BY:	
REVISED:	
NORTH CAROLINA DEPARTMENT OF TRANSPORTATION	UTILITY CONSTRUCTION PLANS ONLY
UTILITIES ENGINEERING SEC. PHONE: (919) 707-6690 FAX: (919) 250-4151	

DOCUMENT NOT CONSIDERED FINAL UNLESS ALL SIGNATURES COMPLETED

Prepared in the Office of: **M M**
 MOTT MACDONALD
 PO Box 700
 Fuquay-Varina, NC 27526
 www.mottmac.com/americas

UTILITY CONSTRUCTION



MATCHLINE -Y7- STA. 34 + 00.00 SEE SHEET UC-13

WL-11 PROP. 373 LF OF 8" WATER LINE

ABANDON 353 LF OF 8" UTILITY PIPE

STEEPEN SLOPE FROM -Y7- STA. 31+50.00 TO 35+50.00 RT. (SEE CROSS SECTIONS). SEE DETAIL SHEET 2G-x FOR ROCK PLATING.

NOTE: PROPOSED DITCH DEPTH DOES NOT CONTAIN THE DESIGN Q10 AT ALL LOCATIONS. THE DITCH DEPTH IS CONTROLLED BY THE MINIMUM AVAILABLE GRADE TO THE OUTLET (0.15%). THE EXISTING CONDITION HAS NO POSITIVE OUTLET THEREFORE THE PROVIDED DITCH IS A MARKED IMPROVEMENT OVER EXISTING CONDITIONS.

NOTE: PROPOSED DITCH DEPTH DOES NOT CONTAIN THE DESIGN Q10 AT ALL LOCATIONS. THE DITCH DEPTH IS CONTROLLED BY THE MINIMUM AVAILABLE GRADE TO THE OUTLET (0.15%). THE EXISTING CONDITION HAS NO POSITIVE OUTLET THEREFORE THE PROVIDED DITCH IS A MARKED IMPROVEMENT OVER EXISTING CONDITIONS.

331
 NO CLAIM
 FRANCES M. MARTIN & MELBA M. WILLIS
 DB 12L PG 225
 PB 8 PG 57

SEE SHEET UC-24 FOR WATER PROFILE

NOTE:
 THE ESTIMATED QUANTITY OF DUCTILE IRON WATER PIPE FITTINGS ON THIS PLAN SHEET IS 305 POUNDS. THE ACTUAL QUANTITY AND TYPE OF FITTINGS WILL VARY BASED ON FIELD CONDITIONS.

R:\Utilities\Engineering\UC\Proj\I-5987b-ut1_UC19-uc19.dwg