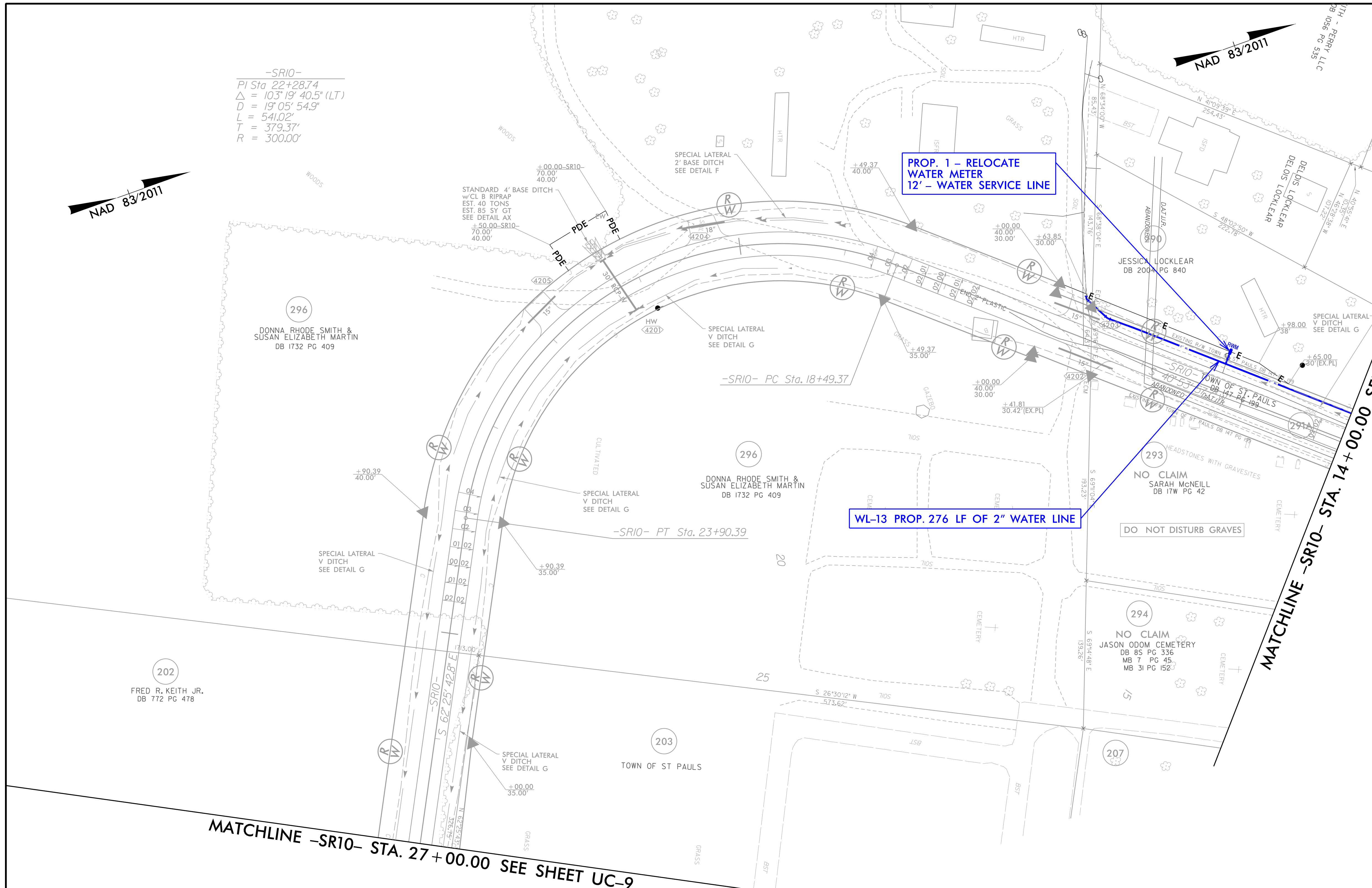


PROJECT REFERENCE NO.	SHEET NO.
I-5987B	UC-17
DESIGNED BY: BLP	
DRAWN BY: BLP	
CHECKED BY: DSJ	
APPROVED BY:	
REVISED:	
NORTH CAROLINA DEPARTMENT OF TRANSPORTATION	
UTILITIES ENGINEERING SEC. PHONE: (919) 707-6690 FAX: (919) 250-4151	UTILITY CONSTRUCTION PLANS ONLY

**DOCUMENT NOT CONSIDERED FINAL
UNLESS ALL SIGNATURES COMPLETED**

Prepared in the Office of:
M PO Box 700
M Fuquay-Varina, NC 27526
 MOTT MACDONALD www.mottmac.com/americas

UTILITY CONSTRUCTION



-SR10-
 PI Sta. 22+28.74
 $\Delta = 103^{\circ}19'40.5''$ (LT)
 $D = 19^{\circ}05'54.9''$
 $L = 541.02'$
 $T = 379.37'$
 $R = 300.00'$

NAD 83/2011

NAD 83/2011

PROP. 1 - RELOCATE
 WATER METER
 12' - WATER SERVICE LINE

WL-13 PROP. 276 LF OF 2" WATER LINE

MATCHLINE -SR10- STA. 14 + 00.00 SEE SHEET UC-16

MATCHLINE -SR10- STA. 27 + 00.00 SEE SHEET UC-9

NOTE:
 THE ESTIMATED QUANTITY OF DUCTILE IRON WATER PIPE FITTINGS ON THIS PLAN SHEET IS 0 POUNDS. THE ACTUAL QUANTITY AND TYPE OF FITTINGS WILL VARY BASED ON FIELD CONDITIONS.

R:\Utilities\Engineering\UC\Proj\I-5987b-utl_UC17.dwg