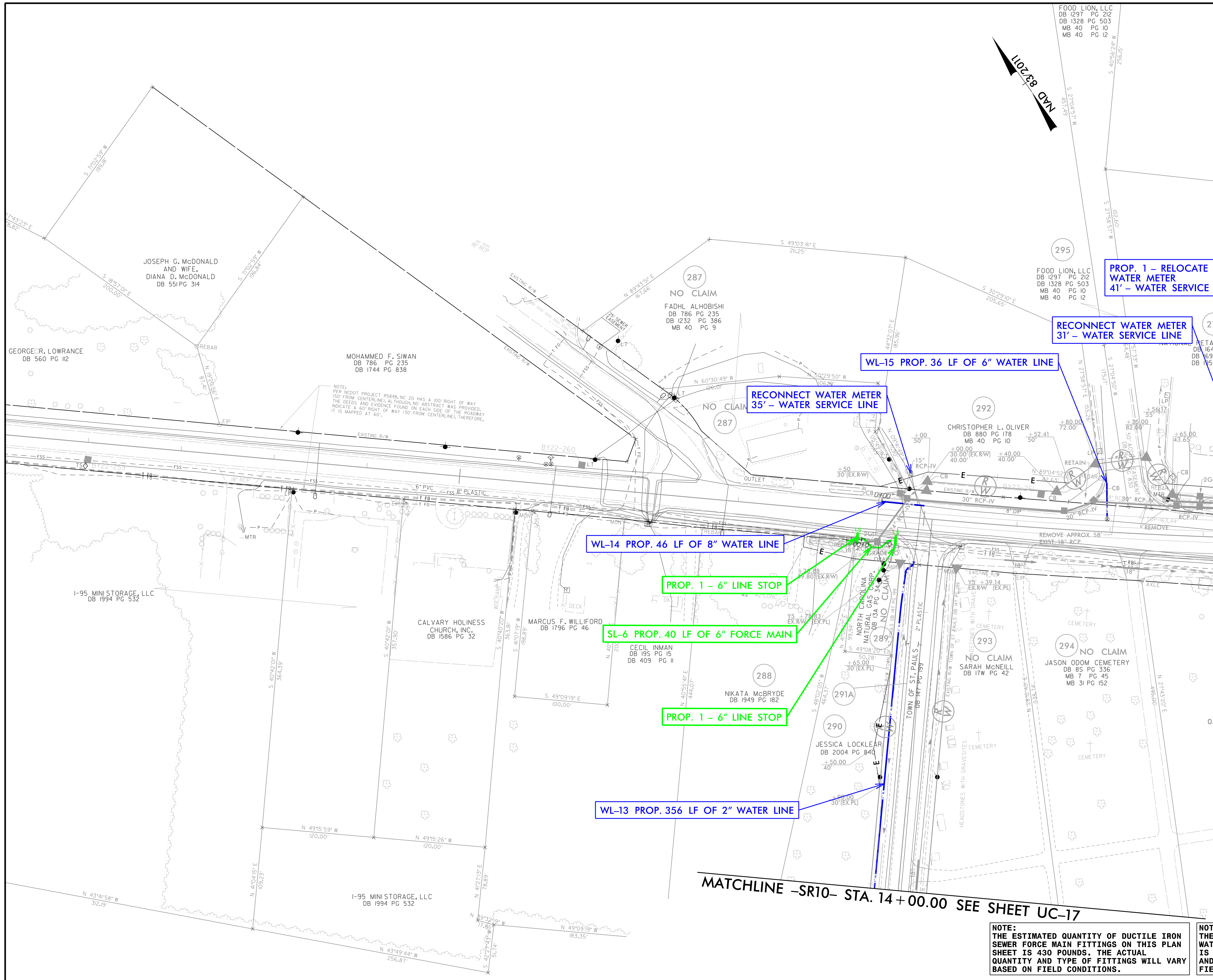


PROJECT REFERENCE NO.	SHEET NO.						
I-5987B	UC-16						
DESIGNED BY: BLP							
DRAWN BY: BLP							
CHECKED BY: DSJ							
APPROVED BY:							
REVISED:							
NORTH CAROLINA DEPARTMENT OF TRANSPORTATION UTILITIES ENGINEERING SEC. PHONE: (919) 707-6690 FAX: (919) 250-4151 UTILITY CONSTRUCTION PLANS ONLY							
DOCUMENT NOT CONSIDERED FINAL UNLESS ALL SIGNATURES COMPLETED							
Prepared in the Office of: <table border="1"> <tr> <td>M</td> <td>PO Box 700</td> </tr> <tr> <td>M</td> <td>Fuquay-Varina, NC 27526</td> </tr> <tr> <td>MACDONALD</td> <td>www.mottmac.com/americas</td> </tr> </table>		M	PO Box 700	M	Fuquay-Varina, NC 27526	MACDONALD	www.mottmac.com/americas
M	PO Box 700						
M	Fuquay-Varina, NC 27526						
MACDONALD	www.mottmac.com/americas						
<h1>UTILITY CONSTRUCTION</h1>							



MATCHLINE -Y5- STA. 14 + 00 SEE SHEET UC-9

MATCHLINE -SR10- STA. 14 + 00.00 SEE SHEET UC-17

SEE SHEET UC-26 FOR SEWER PROFILE
SEE SHEET UC-25 FOR WATER PROFILE

NOTE:
THE ESTIMATED QUANTITY OF DUCTILE IRON SEWER FORCE MAIN FITTINGS ON THIS PLAN SHEET IS 430 POUNDS. THE ACTUAL QUANTITY AND TYPE OF FITTINGS WILL VARY BASED ON FIELD CONDITIONS.

NOTE:
THE ESTIMATED QUANTITY OF DUCTILE IRON WATER PIPE FITTINGS ON THIS PLAN SHEET IS 1,040 POUNDS. THE ACTUAL QUANTITY AND TYPE OF FITTINGS WILL VARY BASED ON FIELD CONDITIONS.

R:\Utilities\Engineering\UC\Projects\I5987b-ut1\UC16-udj41.dgn