

PROJECT REFERENCE NO.	SHEET NO.
I-5987B	UC-12
DESIGNED BY: BLP	
DRAWN BY: BLP	
CHECKED BY: DSJ	
APPROVED BY:	
REVISED:	
NORTH CAROLINA DEPARTMENT OF TRANSPORTATION	UTILITY CONSTRUCTION PLANS ONLY
UTILITIES ENGINEERING SEC. PHONE: (919) 707-6690 FAX: (919) 250-4151	

**DOCUMENT NOT CONSIDERED FINAL
UNLESS ALL SIGNATURES COMPLETED**

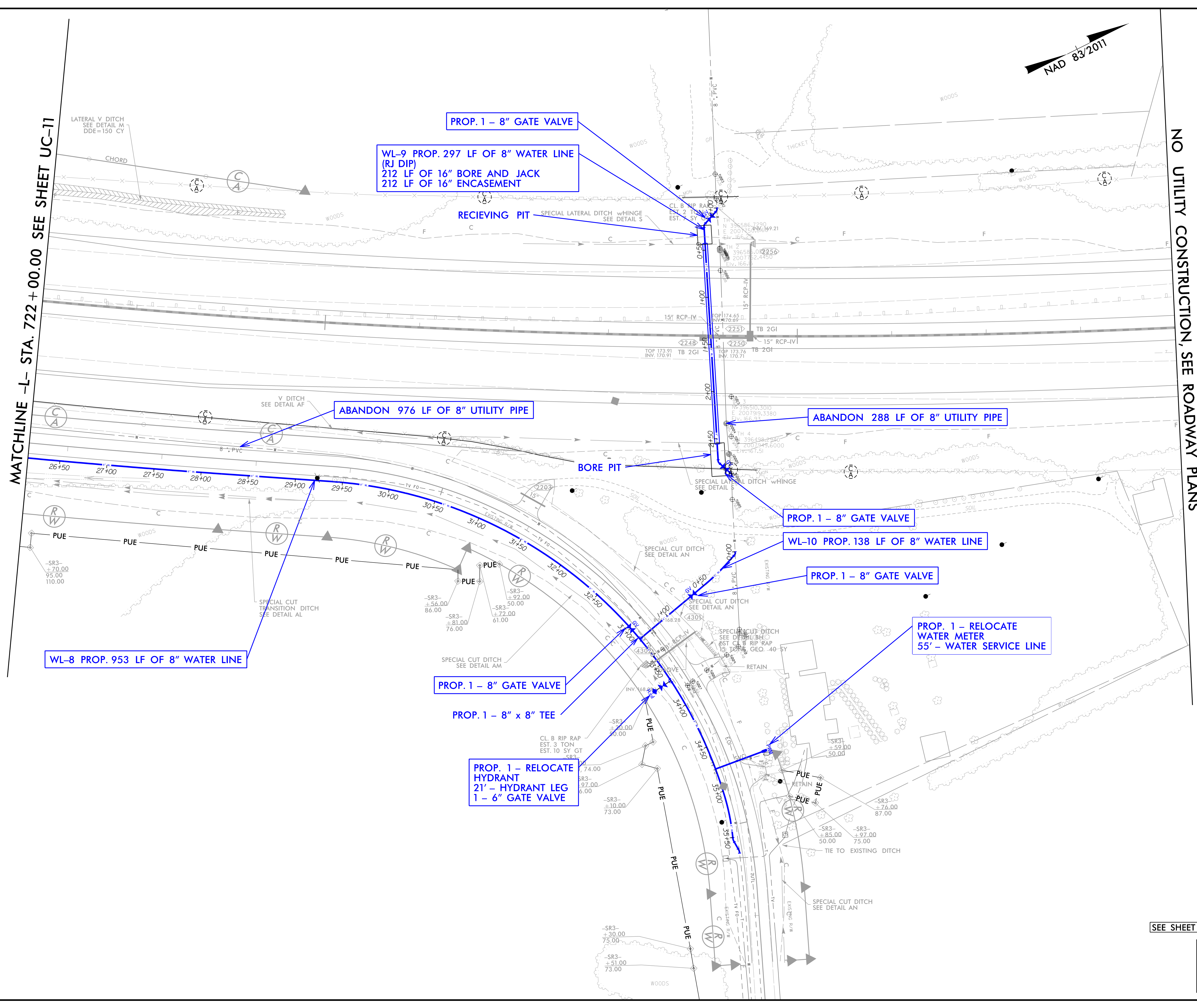
Prepared in the Office of:
M PO Box 700
M Fuquay-Varina, NC 27526
 MOTT MACDONALD www.mottmac.com/americas

UTILITY CONSTRUCTION



MATCHLINE -L- STA. 722 + 00.00 SEE SHEET UC-11

NO UTILITY CONSTRUCTION, SEE ROADWAY PLANS
 MATCHLINE -L- STA. 734 + 00.00



SEE SHEET UC-22, UC-23 & UC-24 FOR WATER PROFILE

NOTE:
 THE ESTIMATED QUANTITY OF DUCTILE IRON WATER PIPE FITTINGS ON THIS PLAN SHEET IS 1,470 POUNDS. THE ACTUAL QUANTITY AND TYPE OF FITTINGS WILL VARY BASED ON FIELD CONDITIONS.

R:\Utilities\Engineering\UC\Proj\I5987b\utl_UC12.dwg