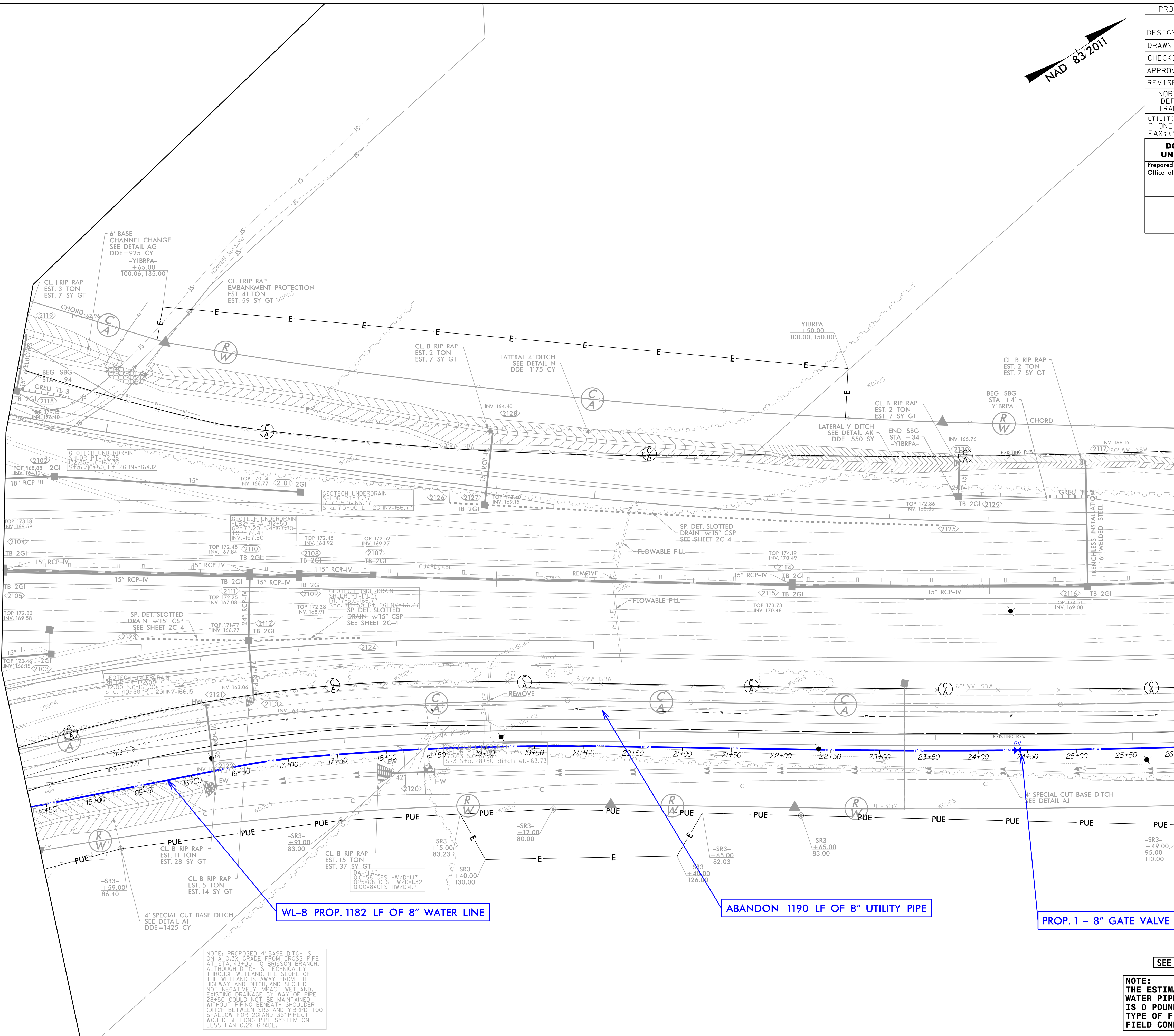


PROJECT REFERENCE NO.	I-5987B	SHEET NO.	UC-11
DESIGNED BY:	BLP		
DRAWN BY:	BLP		
CHECKED BY:	DSJ		
APPROVED BY:			
REVISER:		NORTH CAROLINA DEPARTMENT OF TRANSPORTATION UTILITIES ENGINEERING SEC. PHONE: (919) 707-6690 FAX: (919) 250-4151 UTILITY CONSTRUCTION PLANS ONLY	
DOCUMENT NOT CONSIDERED FINAL UNLESS ALL SIGNATURES COMPLETED			
Prepared in the Office of:	M PO Box 700 Fuquay-Varina, NC 27526 MOTT MACDONALD www.mottmac.com/americas		
UTILITY CONSTRUCTION			



MATCHLINE -L- STA. 710+00.00
SEE SHEET UC-10

MATCHLINE -L- STA. 722+00.00 SEE SHEET UC-12



NOTE: PROPOSED 4' BASE DITCH IS ON A 0.3% GRADE FROM GROSS PIPE AT STA. 43+00 TO BRISSON BRANCH. ALTHOUGH DITCH IS TECHNICALLY THROUGH WETLAND, THE SLOPE OF THE WETLAND IS AWAY FROM THE HIGHWAY AND DITCH, AND SHOULD NOT NEGATIVELY IMPACT WETLAND. EXISTING DRAINAGE BY WAY OF PIPE 28+50 COULD NOT BE MAINTAINED WITHOUT PIPING BENEATH SHOULDER DITCH BETWEEN SR3 AND YBRPD. TOO SHALLOW FOR 2GI AND 36" PIPE, IT WOULD BE LONG PIPE SYSTEM ON LESS THAN 0.2% GRADE.

SEE SHEET UC-22 FOR WATER PROFILE

NOTE:
THE ESTIMATED QUANTITY OF DUCTILE IRON WATER PIPE FITTINGS ON THIS PLAN SHEET IS 0 POUNDS. THE ACTUAL QUANTITY AND TYPE OF FITTINGS WILL VARY BASED ON FIELD CONDITIONS.

R:\Utilities\Engineering\UC\Proj\I-5987B-utl\UC11.rdg\21.dgn