

PROJECT REFERENCE NO.	SHEET NO.
I-5987B	UC-8
DESIGNED BY: BLP	
DRAWN BY: BLP	
CHECKED BY: DSJ	
APPROVED BY:	
REVISED:	
NORTH CAROLINA DEPARTMENT OF TRANSPORTATION UTILITIES ENGINEERING SEC. PHONE: (919) 707-6690 FAX: (919) 250-4151 UTILITY CONSTRUCTION PLANS ONLY	

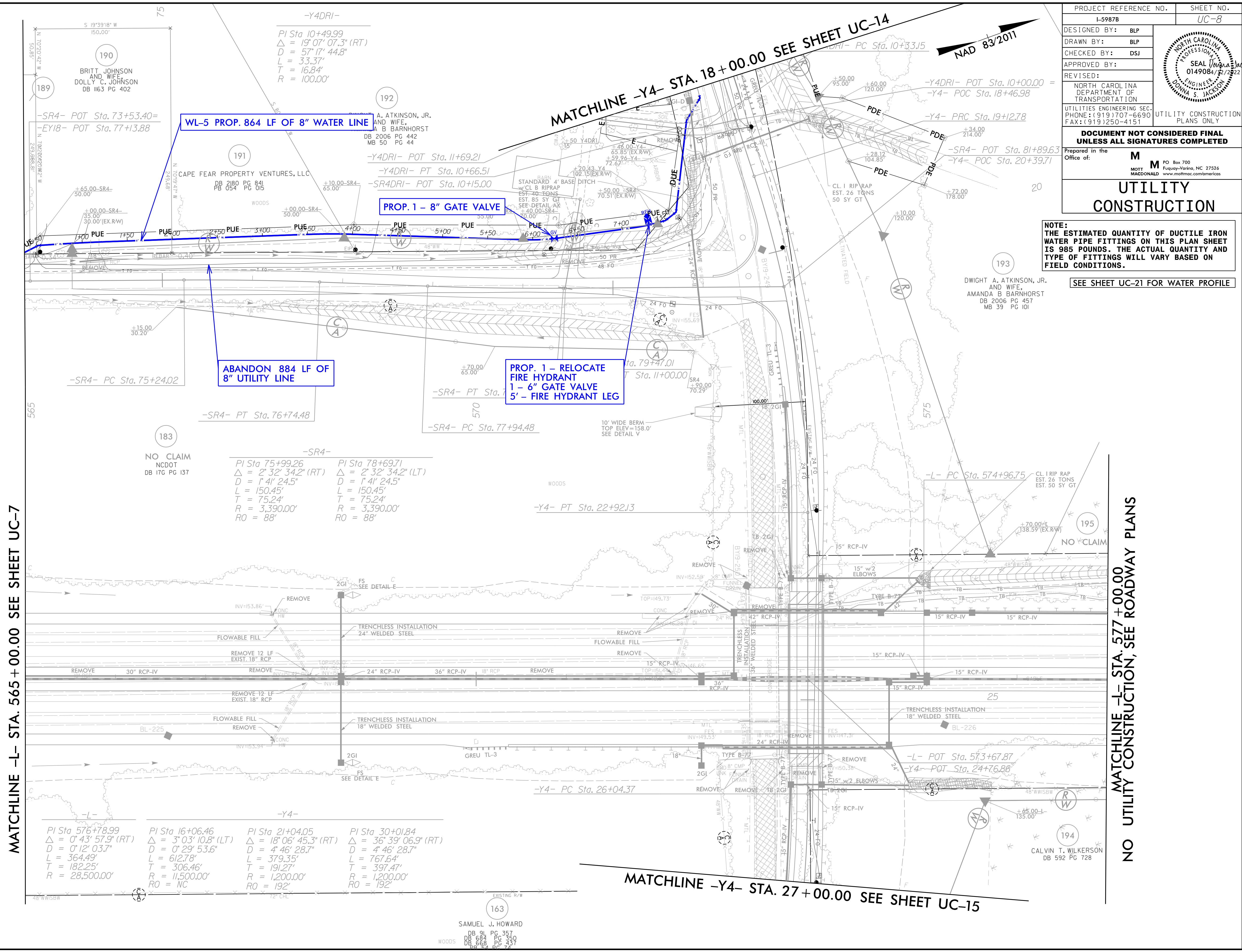
**DOCUMENT NOT CONSIDERED FINAL
UNLESS ALL SIGNATURES COMPLETED**

Prepared in the Office of: **M**
 MOTT MACDONALD
 PO Box 700
 Fuquay-Varina, NC 27526
 www.mottmac.com/americas

UTILITY CONSTRUCTION

NOTE:
 THE ESTIMATED QUANTITY OF DUCTILE IRON WATER PIPE FITTINGS ON THIS PLAN SHEET IS 985 POUNDS. THE ACTUAL QUANTITY AND TYPE OF FITTINGS WILL VARY BASED ON FIELD CONDITIONS.

SEE SHEET UC-21 FOR WATER PROFILE



MATCHLINE -L- STA. 565 + 00.00 SEE SHEET UC-7

MATCHLINE -L- STA. 577 + 00.00 NO UTILITY CONSTRUCTION, SEE ROADWAY PLANS

-Y4DRI-
 PI Sta 10+49.99
 $\Delta = 19^{\circ} 07' 07.3''$ (RT)
 $D = 57' 17'' 44.8''$
 $L = 33.37'$
 $T = 16.84'$
 $R = 100.00'$

-SR4-
 PI Sta 75+99.26 PI Sta 78+69.71
 $\Delta = 2^{\circ} 32' 34.2''$ (RT) $\Delta = 2^{\circ} 32' 34.2''$ (LT)
 $D = 1' 41' 24.5''$ $D = 1' 41' 24.5''$
 $L = 150.45'$ $L = 150.45'$
 $T = 75.24'$ $T = 75.24'$
 $R = 3,390.00'$ $R = 3,390.00'$
 $RO = 88'$ $RO = 88'$

-L-	-Y4-	-Y4-	-Y4-
PI Sta 576+78.99	PI Sta 16+06.46	PI Sta 21+04.05	PI Sta 30+01.84
$\Delta = 0^{\circ} 43' 57.9''$ (RT)	$\Delta = 3^{\circ} 03' 10.8''$ (LT)	$\Delta = 18^{\circ} 06' 45.3''$ (RT)	$\Delta = 36^{\circ} 39' 06.9''$ (RT)
$D = 0^{\circ} 12' 03.7''$	$D = 0^{\circ} 29' 53.6''$	$D = 4^{\circ} 46' 28.7''$	$D = 4^{\circ} 46' 28.7''$
$L = 364.49'$	$L = 612.78'$	$L = 379.35'$	$L = 767.64'$
$T = 182.25'$	$T = 306.46'$	$T = 191.27'$	$T = 397.47'$
$R = 28,500.00'$	$R = 11,500.00'$	$R = 1,200.00'$	$R = 1,200.00'$
	$RO = NC$	$RO = 192'$	$RO = 192'$

163
 SAMUEL J. HOWARD
 DB 91 PG 357
 DB 684 PG 350
 DB 668 PG 437
 DB 64 PG 74

R:\Utilities\Engineering\UC\Proj\I-5987B-ut1_UC08.dwg