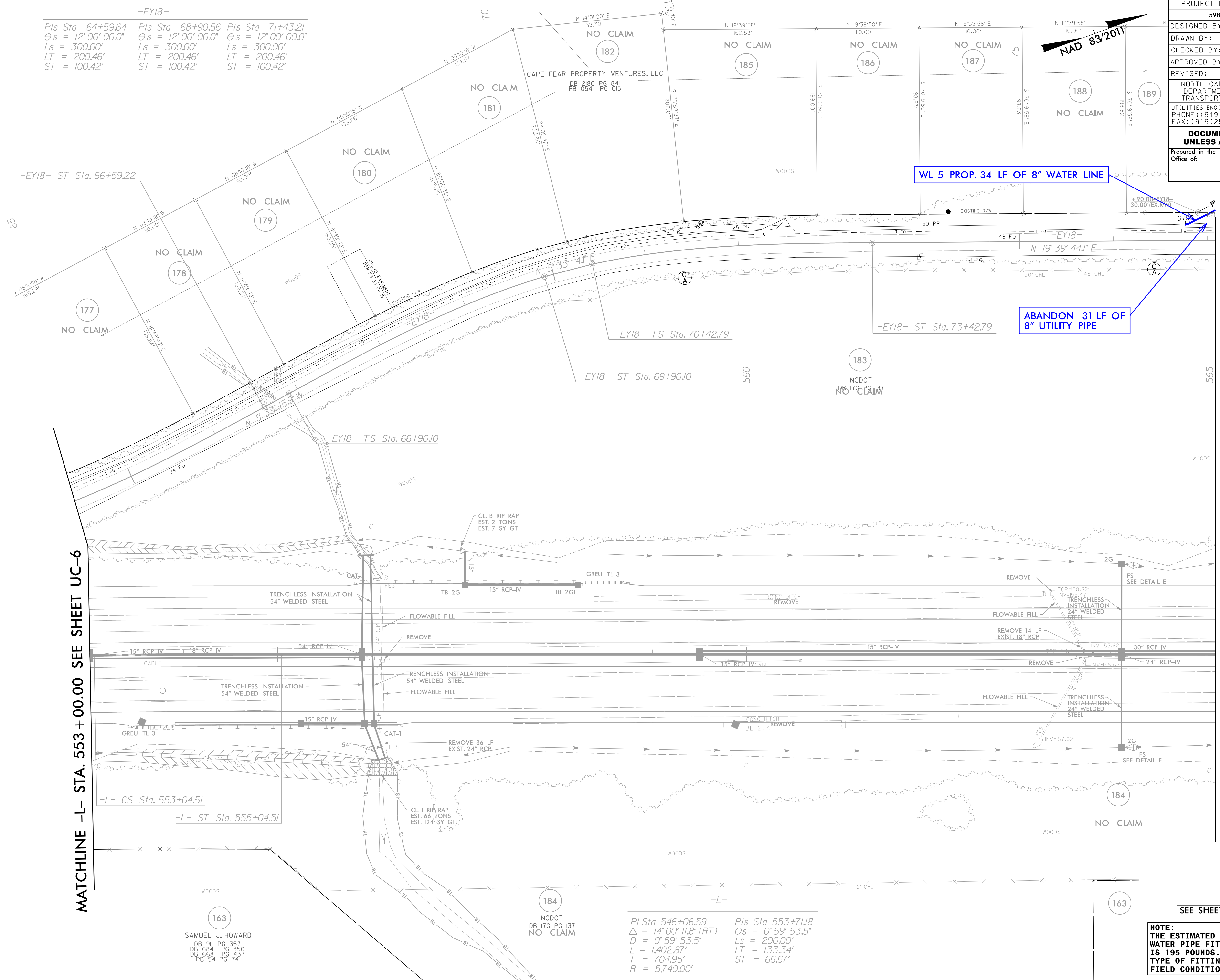


-EY18-
 Pls Sta 64+59.64 $\theta_s = 12^\circ 00' 00.0''$ $L_s = 300.00'$ $LT = 200.46'$ $ST = 100.42'$
 Pls Sta 68+90.56 $\theta_s = 12^\circ 00' 00.0''$ $L_s = 300.00'$ $LT = 200.46'$ $ST = 100.42'$
 Pls Sta 71+43.21 $\theta_s = 12^\circ 00' 00.0''$ $L_s = 300.00'$ $LT = 200.46'$ $ST = 100.42'$

PROJECT REFERENCE NO.	I-5987B	SHEET NO.	UC-7
DESIGNED BY:	BLP		
DRAWN BY:	BLP		
CHECKED BY:	DSJ		
APPROVED BY:			
REVISED:			
NORTH CAROLINA DEPARTMENT OF TRANSPORTATION		UTILITY CONSTRUCTION PLANS ONLY	
UTILITIES ENGINEERING SEC. PHONE: (919) 707-6690 FAX: (919) 250-4151			
DOCUMENT NOT CONSIDERED FINAL UNLESS ALL SIGNATURES COMPLETED			
Prepared in the Office of:			
	MOTT MACDONALD PO Box 700 Fuquay-Varina, NC 27526 www.mottmac.com/americas		



WL-5 PROP. 34 LF OF 8" WATER LINE

ABANDON 31 LF OF 8" UTILITY PIPE

MATCHLINE -L- STA. 553+00.00 SEE SHEET UC-6

MATCHLINE -L- STA. 565+00.00 SEE SHEET UC-8

SEE SHEET UC-21 FOR WATER PROFILE

NOTE:
 THE ESTIMATED QUANTITY OF DUCTILE IRON WATER PIPE FITTINGS ON THIS PLAN SHEET IS 195 POUNDS. THE ACTUAL QUANTITY AND TYPE OF FITTINGS WILL VARY BASED ON FIELD CONDITIONS.

R:\Utilities\Engineering\UC\Proj\I-5987b-utl_UC07_rdf.dgn

163
 SAMUEL J. HOWARD
 DB 91 PG 357
 DB 684 PG 360
 PB 663 PG 437
 PB 54 PG 74

184
 NCDOT
 DB 176 PG 137
 NO CLAIM

-L-
 Pls Sta 546+06.59 $\Delta = 14^\circ 00' 11.8''$ (RT) $\theta_s = 0^\circ 59' 53.5''$ $L_s = 200.00'$ $LT = 133.34'$ $ST = 66.67'$
 $D = 0^\circ 59' 53.5''$ $L = 1,402.87'$ $T = 704.95'$ $R = 5,740.00'$