

PROJECT REFERENCE NO.	SHEET NO.
I-5987B	UC-6
DESIGNED BY: BLP	
DRAWN BY: BLP	
CHECKED BY: DSJ	
APPROVED BY:	
REVISED:	
NORTH CAROLINA DEPARTMENT OF TRANSPORTATION UTILITIES ENGINEERING SEC. PHONE: (919) 707-6690 FAX: (919) 250-4151 UTILITY CONSTRUCTION PLANS ONLY	

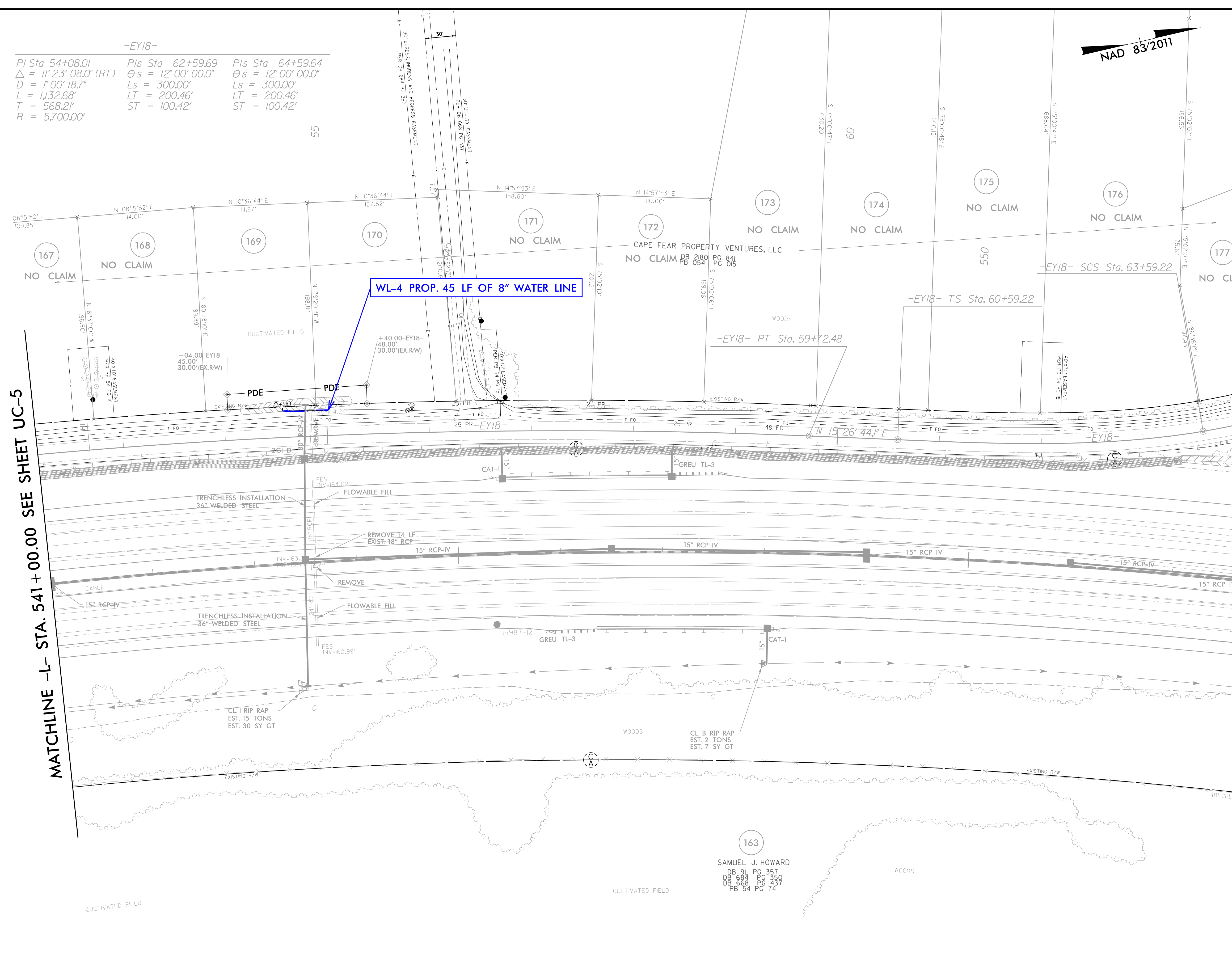
**DOCUMENT NOT CONSIDERED FINAL
UNLESS ALL SIGNATURES COMPLETED**

Prepared in the Office of: **M** MOTT MACDONALD
 PO Box 700 Fuquay-Varina, NC 27526
 www.mottmac.com/americas

UTILITY CONSTRUCTION

-EY18-

PI Sta 54+08.01	PIs Sta 62+59.69	PIs Sta 64+59.64
$\Delta = 11^{\circ}23'08.0"$ (RT)	$\Theta s = 12^{\circ}00'00.0"$	$\Theta s = 12^{\circ}00'00.0"$
$D = 1^{\circ}00'18.7"$	$Ls = 300.00'$	$Ls = 300.00'$
$L = 1,132.68'$	$LT = 200.46'$	$LT = 200.46'$
$T = 568.21'$	$ST = 100.42'$	$ST = 100.42'$
$R = 5,700.00'$		



MATCHLINE -L- STA. 541+00.00 SEE SHEET UC-5

MATCHLINE -L- STA. 553+00.00 SEE SHEET UC-7

-L-

PI Sta 546+06.59
$\Delta = 14^{\circ}00'11.8"$ (RT)
$D = 0^{\circ}59'53.5"$
$L = 1,402.87'$
$T = 704.95'$
$R = 5,740.00'$

163
 SAMUEL J. HOWARD
 DB 9L PG 357
 DB 684 PG 350
 DB 668 PG 437
 FB 54 PG 74

SEE SHEET UC-20 FOR WATER PROFILE

NOTE:
 THE ESTIMATED QUANTITY OF DUCTILE IRON WATER PIPE FITTINGS ON THIS PLAN SHEET IS 610 POUNDS. THE ACTUAL QUANTITY AND TYPE OF FITTINGS WILL VARY BASED ON FIELD CONDITIONS.