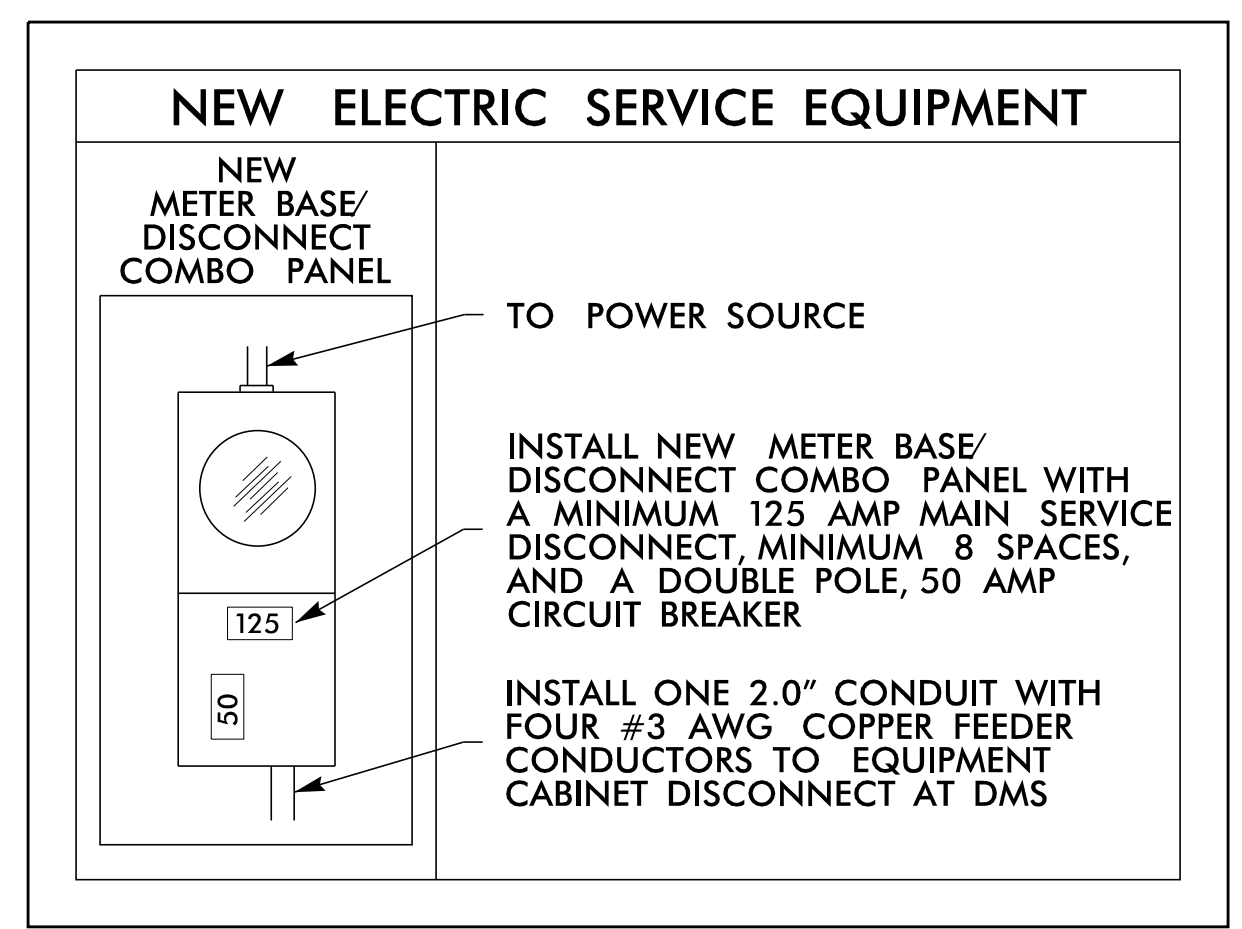
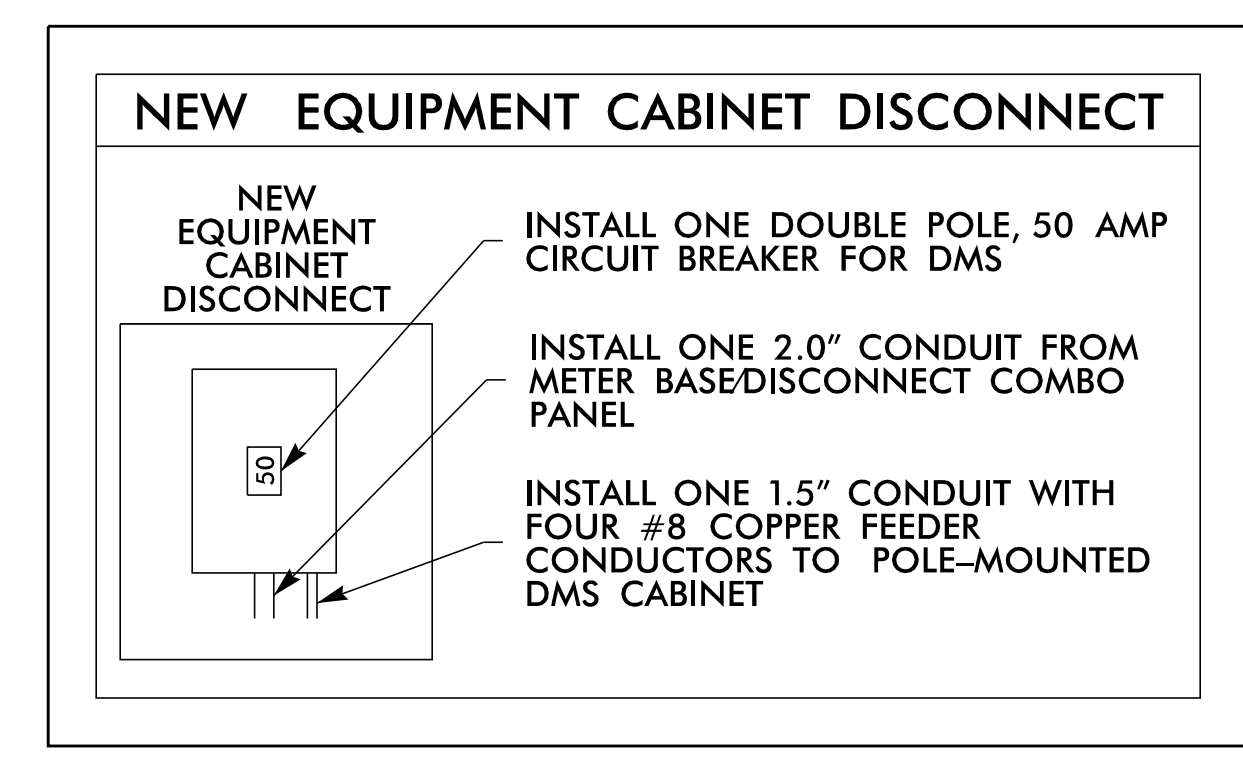


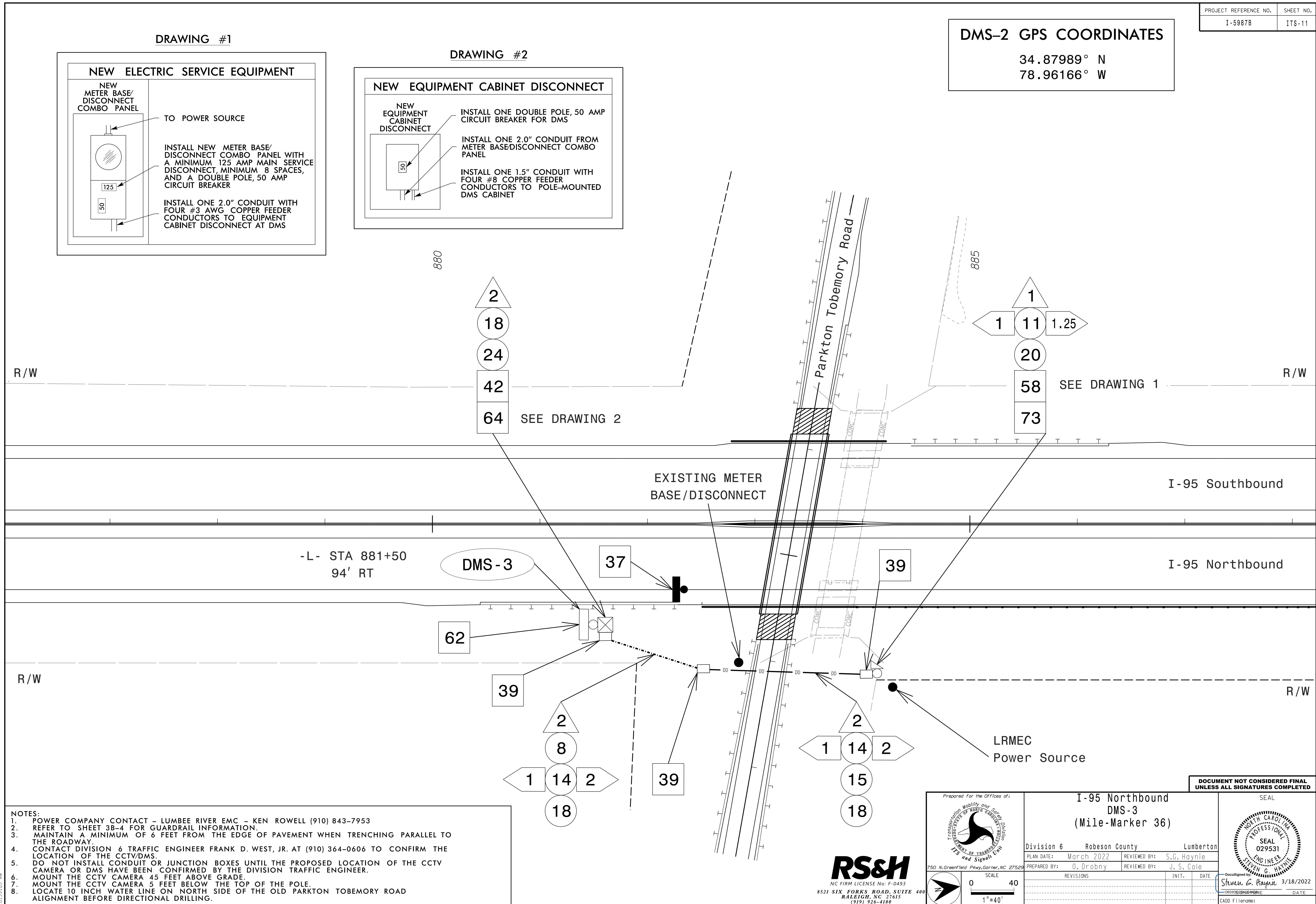
DRAWING #1



DRAWING #2



**DMS-2 GPS COORDINATES**  
 34.87989° N  
 78.96166° W



**NOTES:**  
 1. POWER COMPANY CONTACT - LUMBEE RIVER EMC - KEN ROWELL (910) 843-7953  
 2. REFER TO SHEET 3B-4 FOR GUARDRAIL INFORMATION.  
 3. MAINTAIN A MINIMUM OF 6 FEET FROM THE EDGE OF PAVEMENT WHEN TRENCHING PARALLEL TO THE ROADWAY.  
 4. CONTACT DIVISION 6 TRAFFIC ENGINEER FRANK D. WEST, JR. AT (910) 364-0606 TO CONFIRM THE LOCATION OF THE CCTV/DMS.  
 5. DO NOT INSTALL CONDUIT OR JUNCTION BOXES UNTIL THE PROPOSED LOCATION OF THE CCTV CAMERA OR DMS HAVE BEEN CONFIRMED BY THE DIVISION TRAFFIC ENGINEER.  
 6. MOUNT THE CCTV CAMERA 45 FEET ABOVE GRADE.  
 7. MOUNT THE CCTV CAMERA 5 FEET BELOW THE TOP OF THE POLE.  
 8. LOCATE 10 INCH WATER LINE ON NORTH SIDE OF THE OLD PARKTON TOBEMORY ROAD ALIGNMENT BEFORE DIRECTIONAL DRILLING.

**DOCUMENT NOT CONSIDERED FINAL UNLESS ALL SIGNATURES COMPLETED**

 NC FIRM LICENSE No: F-0493 8521 SIX FORKS ROAD, SUITE 400 RALEIGH, NC 27615 (919) 926-4100	Prepared For the Offices of:  NORTH CAROLINA DEPARTMENT OF TRANSPORTATION ITS and Signals Unit	<b>I-95 Northbound DMS-3 (Mile-Marker 36)</b> Division 6 Robeson County Lumberton PLAN DATE: March 2022 REVIEWED BY: S.G. Haynie PREPARED BY: O. Drobny REVIEWED BY: J. S. Cole	SEAL  Steven G. Haynie 3/18/2022 DATE
	SCALE 0 40 1" = 40'	REVISIONS INIT. DATE	CADD Filename:

3/18/2022  
 R:\ITS\666es\gmp\plan\_sheets\5987B\ITS\_psh\_11\_DMS-3.ctb MK36.dgn  
 10:59:03 AM